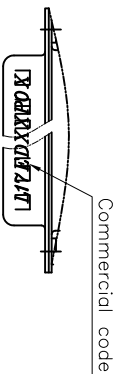
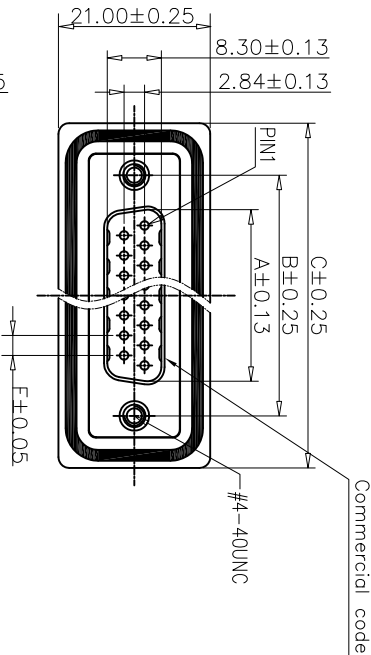


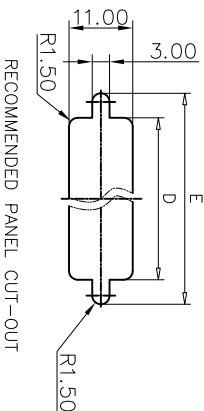
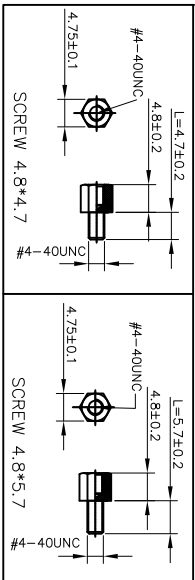
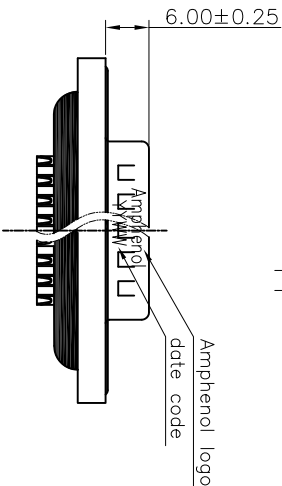
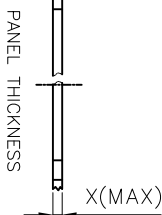
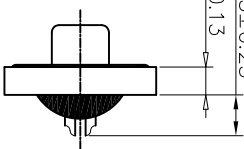
This document is the property of Amphenol Corporation and is delivered on the understanding that it is not to be retransmitted, reproduced, or used in any way without the prior consent, and that no right is granted to disclose or to use any information in this document.



Commercial code



5.65±0.25
3.85±0.13



Customer drawing

POSITION	A	B	C	D	E	F(PITCH)
9	16.92	24.99	39.40	20.00	28.20	2.77
15	25.30	33.32	47.70	28.00	36.50	2.77
25	38.96	47.04	64.50	41.50	51.00	2.77
37	55.42	63.50	80.78	57.80	67.30	2.77

REVISONS		DATE	APPROVED
1	DESCRIPTION	10/19/09	IP
2	New release	03/11/11	IP
2	Dim's correction		

D-SUB TECHNICAL DATA

- SHELL : Steel, 1.25um(50u") min nickel
- BODY : Glass filled thermoplastic.
- PLATE : Glass filled thermoplastic.
- CONTACTS : flame retardant to UL94 V-0 color Black
- SCREWLOCK : Brass, gold over 50u" min nickel.(According to the P/N)
- O RING : Silicone Color: Blue
- EPOXY: Color: Black
- REAR INSERT : Brass, 50u" min nickel
- ELECTRICAL : Voltage rating : 300 V RMS at 50 Hz
Current rating : 5A
Insulation resistance >5000 M Ohms
Contact resistance 20mOhms max.
- MARKING : Amphenol logo
Commercial code
Manufacturing date(YYWW)



NOTE : Screw L=4.7 For Panel Thickness Under X=1.2mm
Screw L=5.7 For Panel Thickness Between X=1.2~2.0mm

PRODUCT CODE

L 17ED XX P 0 X

- L: RoHS Compliance
- 17ED: standard density series
- Number of contacts Standard density: 09, 15, 25, 37
- Contact plating: 0: gold flash
1: 0.38um(15u")
2: 0.76um(30u")
- Termination: 0: Solder cup
- Contact type P: Pin

UNLESS OTHERWISE SPECIFIED

TOLERANCES	APPROVAL	DATE
ASSEMBLY	DRAWN	10/09/11
0.30	CHECKED	03/09/11
0.20	DATE	
0.15		

FOR MATERIALS AND FINISHES SEE NOTES

REMOVE SHARP EDGES

DIMENSIONS

ANGLE OF PROJECTION

SIZE: DRAWING NO: A4 C L17EDXXP0X

SCALE: NONE SHEET 1 OF 1

TITLE: D-sub Waterproof, ED series male Solder cup type

Amphenol Amphenol East Asia Limited

