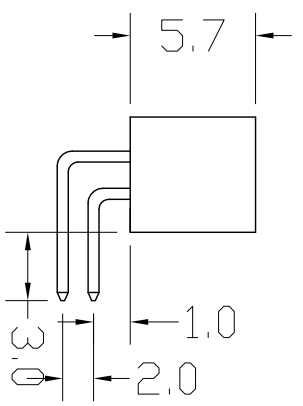
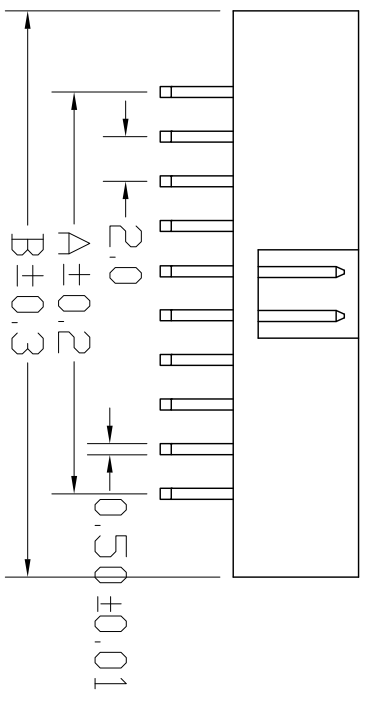
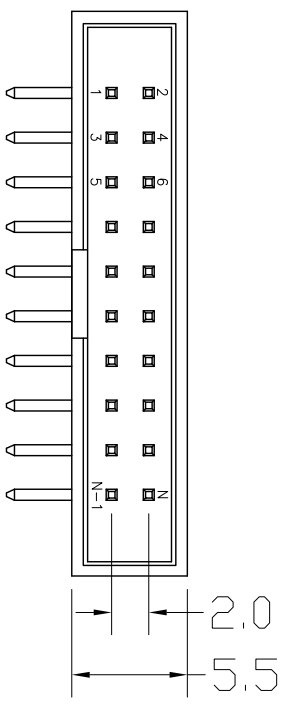


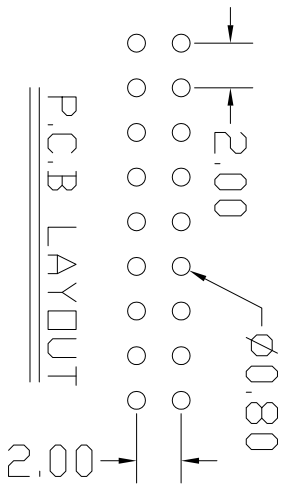
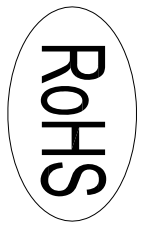
REV.	DESCRIPTION	DATE
A	RELEASE	2012.11.12

NOTES:
 Insulator Material: Nylon-6T, UL 94V-0
 Contact Plating: TIN, 80-100 μ "
 Contact Material: Brass

Current Rating : 1A AC,DC
 Contact Resistance: 20M Ω Max.
 Dielectric Withstanding: AC 500V
 Insulator Resistance: 1000M Ω Min.
 Operating Temp.: -40°C~+105°C



NUMBER OF POSITIONS	DIMENSIONS	
	A	B
06	4.00	13.30
08	6.00	15.30
10	8.00	17.30
12	10.00	19.30
14	12.00	21.30
16	14.00	23.30
18	16.00	25.20
20	18.00	27.30
24	22.00	31.30
26	24.00	33.30
30	28.00	37.30
34	32.00	41.30
40	38.00	47.30
44	42.00	51.30
50	48.00	57.30
60	58.00	67.30
64	62.00	71.30



UNLESS TOLERANCE		DRAW BY	
GENERAL	ANGLE	DESIGN BY	
X. ± 0.30	X.° ± 3.0°	CHECK BY	
.X ± 0.20	.X° ± 2.0°	APPROVE BY	
.XX ± 0.15	.XX° ± 1.0°	SCALE	1:1
.XXX ± 0.08	.XXX° ± 0.5°	SHEET	1/1
		UNIT	MM
Cnc Tech,LLC		DRW NO:	3120-XX-0200-99
Port NO.			
		REV:	A

