

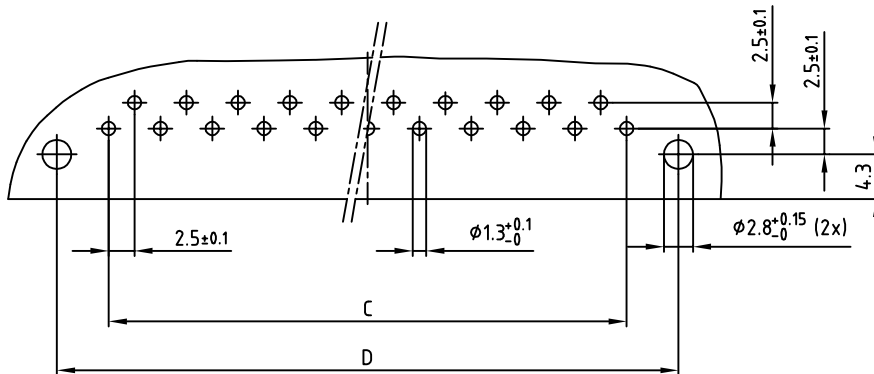
| Polzahl No. of pos. | A ±0.2 | B ±0.1 | C ±0.1 | D ±0.1 | Art.-Nr. Part-No |
|------------------------|--------|-----------|-----------|--------|---------------------|
| 13 | 45.6 | 12x2.5=30 | 12x2.5=30 | 40 | 101E10079X |
| 21 | 65.6 | 20x2.5=50 | 20x2.5=50 | 60 | 101E10099X |
| 31 | 90.6 | 30x2.5=75 | 30x2.5=75 | 85 | 101E10119X |

NOTES:

1. INSULATOR: PC GF UL 94 V-1, GREY
2. CONTACTS: COPPER ALLOY
PLATING: HARD SILVER PLATED
500 MATING CYCLES

3. CONNECTOR IS PART MARKED: PART-NO CONEC ABC

P.C.B. HOLE DRILLINGS



Directive 2002/95/EC RoHS compliant

THIS DRAWING MAY NOT BE COPIED OR REPRODUCED IN ANY WAY, AND MAY NOT BE PASSED ON TO A THIRD PARTY, WITHOUT WRITTEN PERMISSION. OWNERSHIP AND COPYRIGHT OF CONEC Gmbh DO NOT ALTER CAD DRAWING BY HAND

| 1 x b | Ä688 | 15.03.2013 | E.Mick. |
|-------|-------------|------------|---------|
| a | Original | | |
| rev. | description | date | name |

| tolerance | | |
|-----------|------------|--------------|
| | dim. in mm | |
| 2006 | date | name |
| drawn | 21.08. | Sonnenberg |
| appd. | 21.08. | Mickenbecker |
| norm | DIN 41617 | |
| d-old | | |

| | | |
|-----------|--|-----------------------|
| scale: | 2:1 | |
| material: | SEE NOTES | |
| title: | MALE CONNECTOR 13pos.-31pos. / 2,5mm with angled solder pins | |
| dwg no: | 10K4A014 | DIN-A 3 sh: 1/1 |
| part no: | SEE TABLE | |