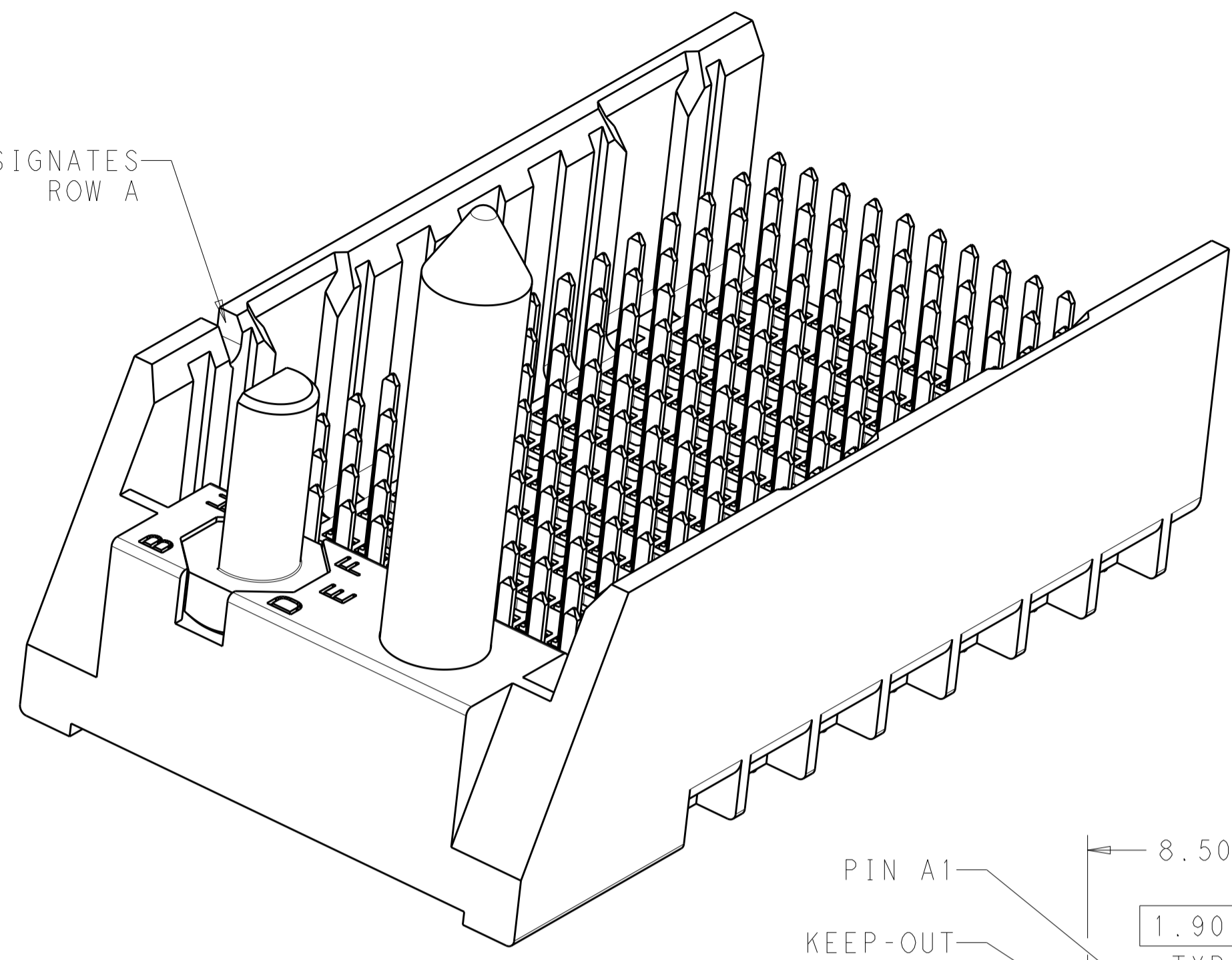
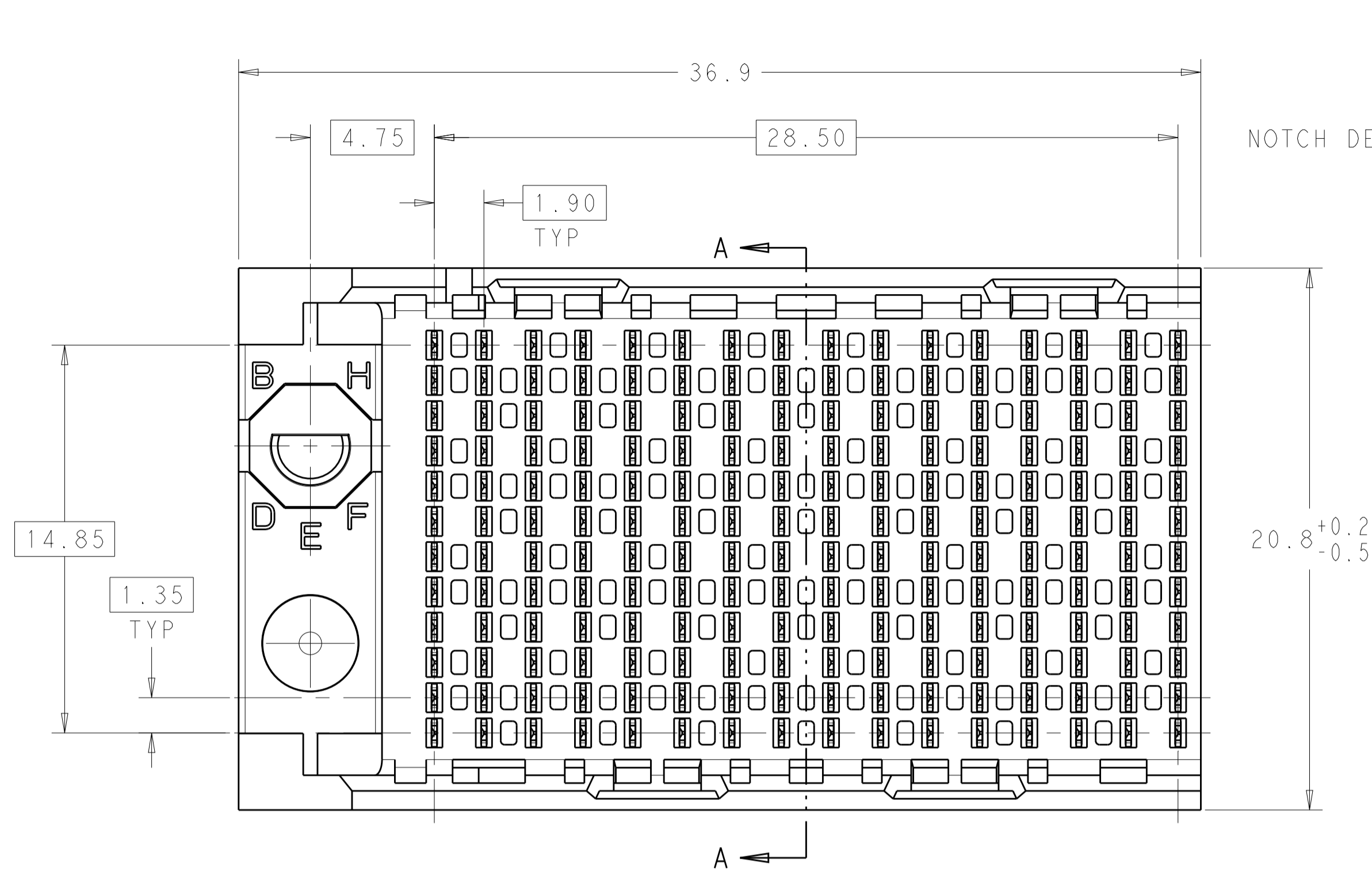
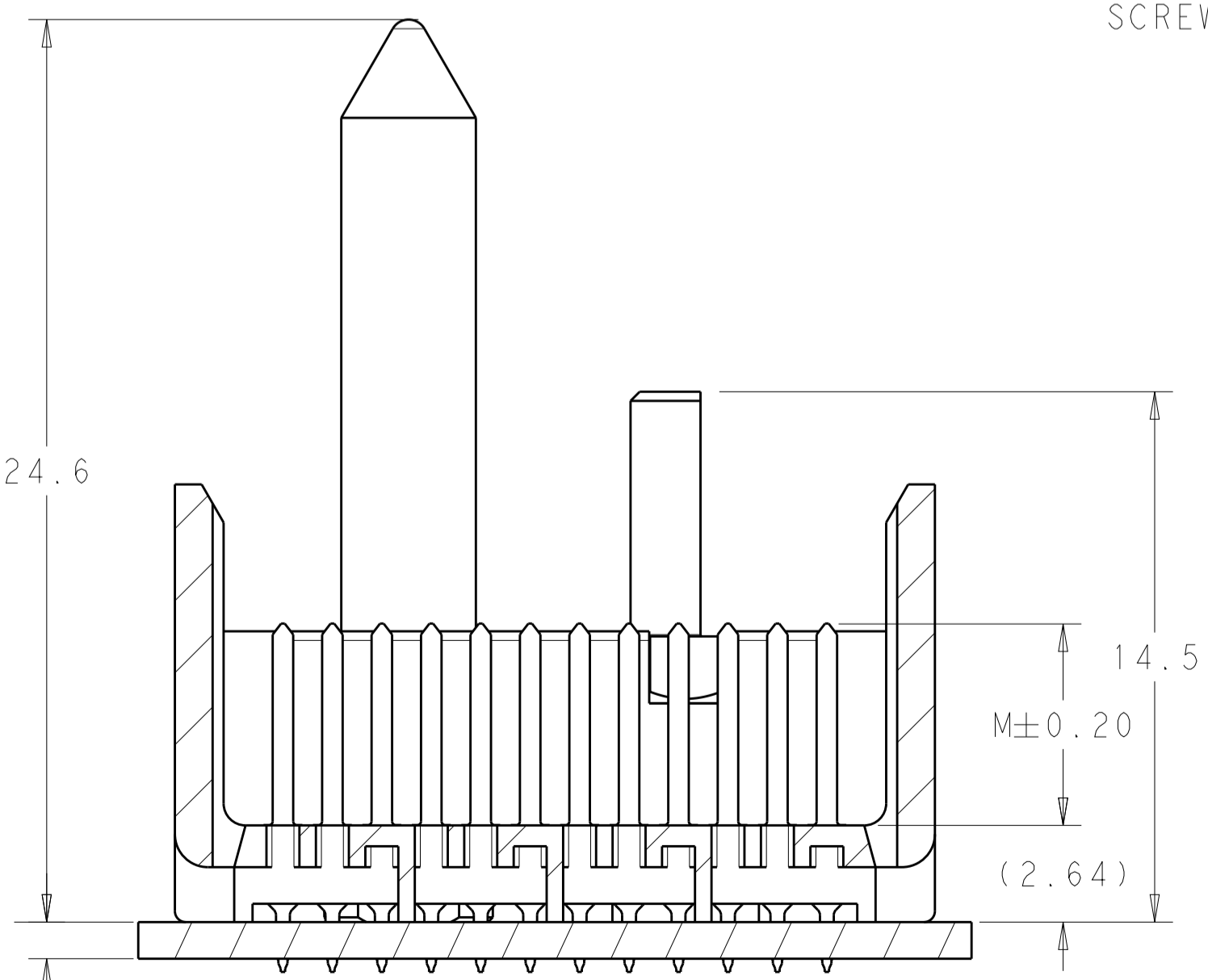
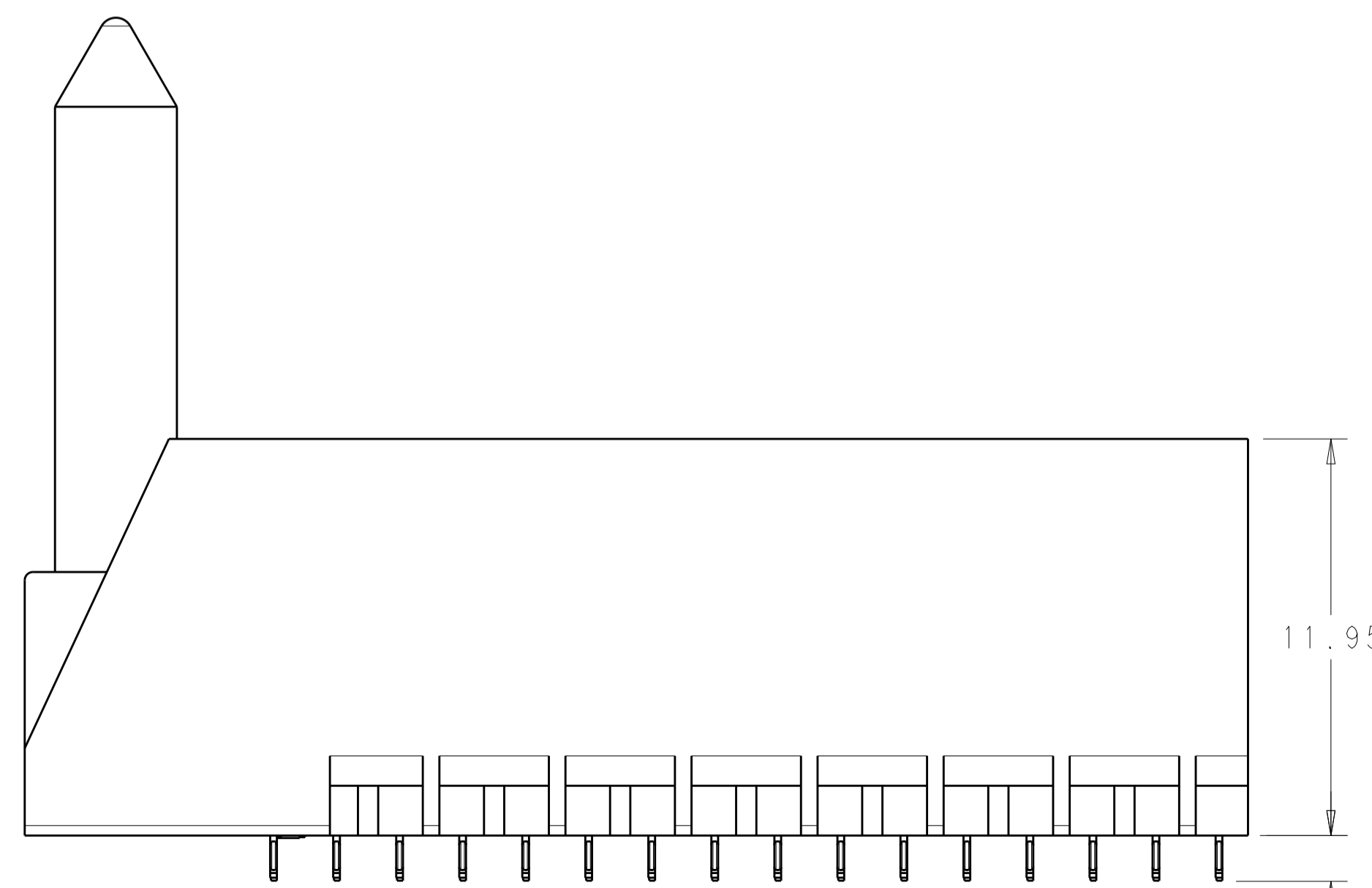
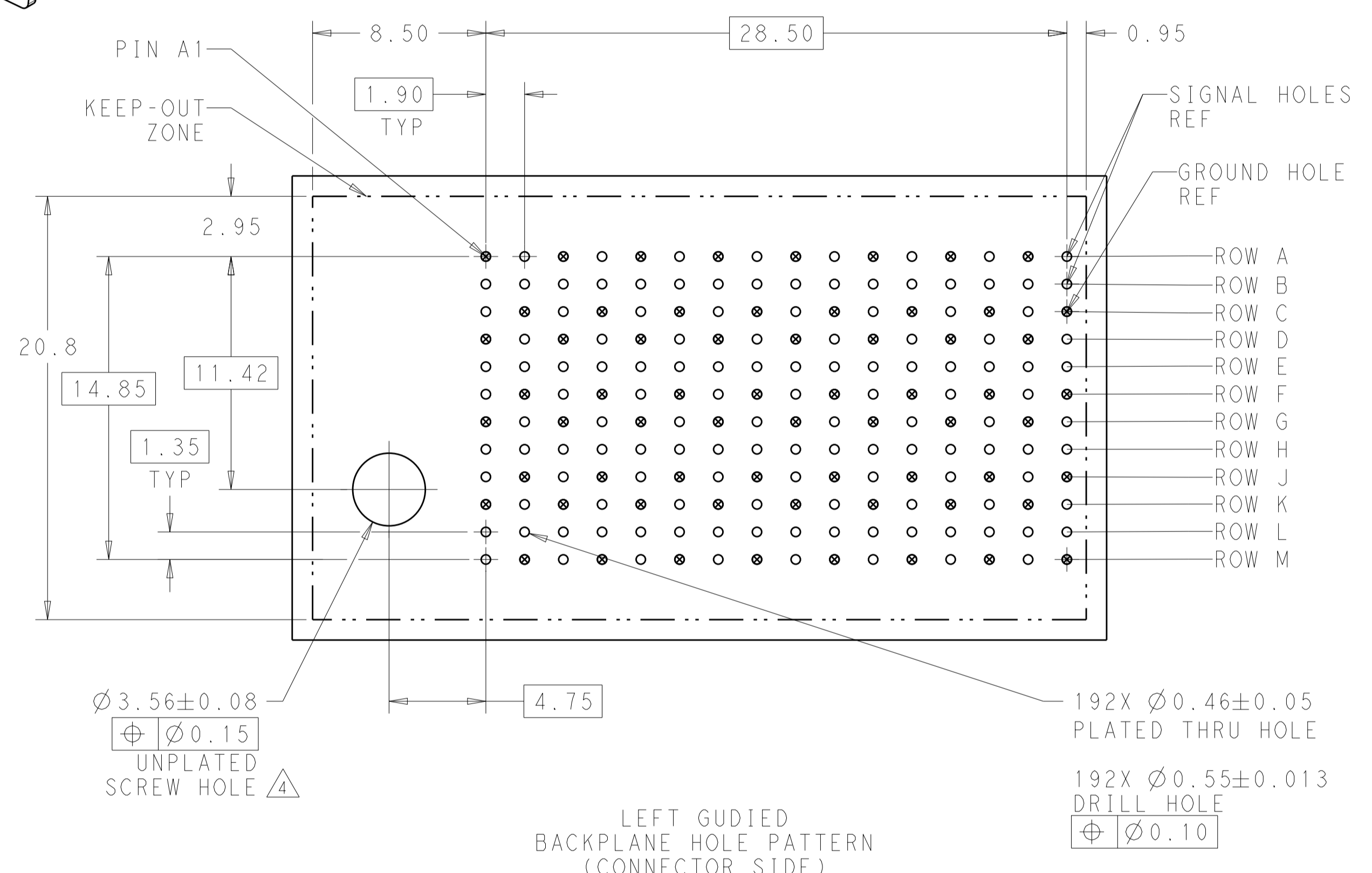


LOC		DIST		REVISIONS			
P	LTN	DATE	DWN	APVD			
A		05FEB2015	AP	DD	REVISED PER ECO-15-001494		



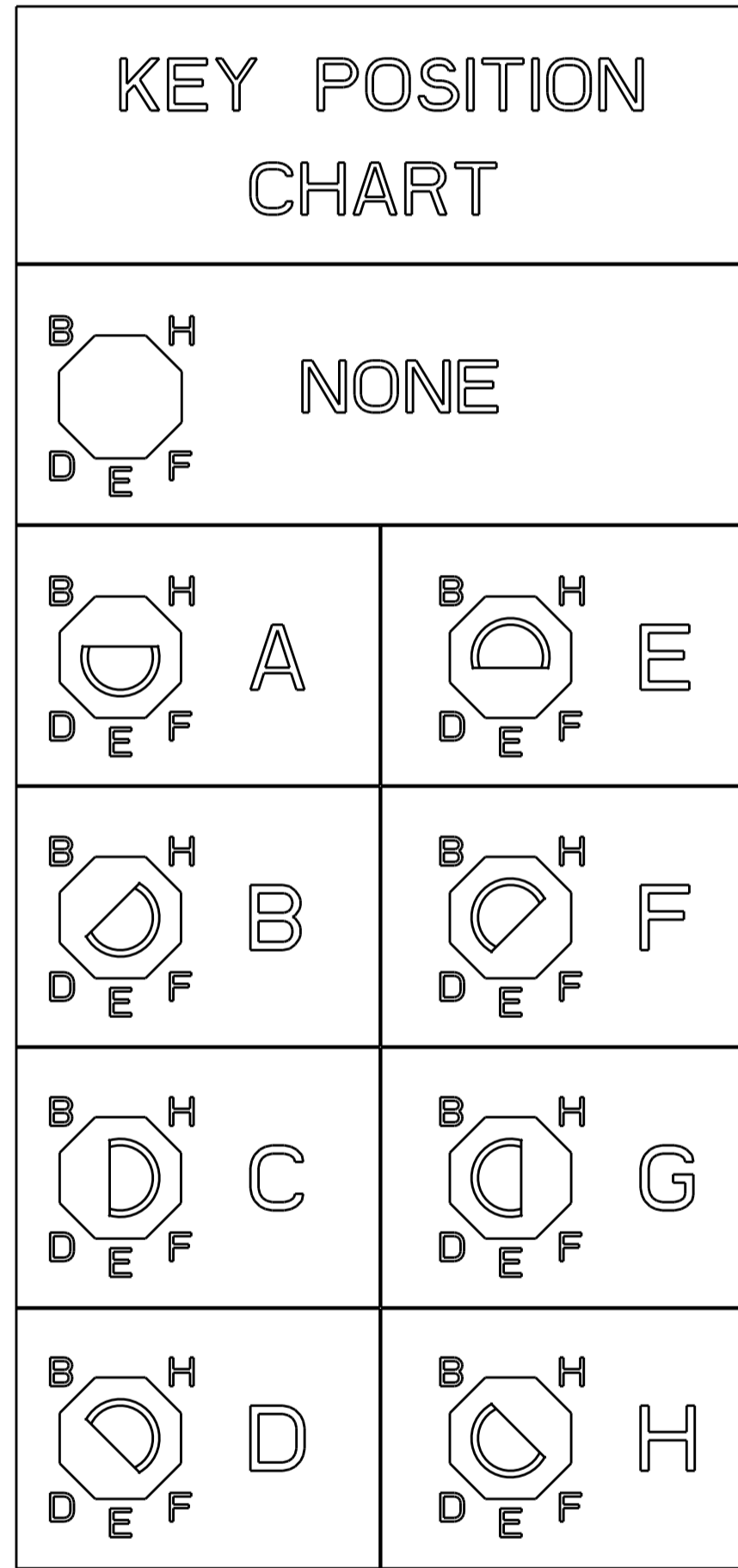
- 1 MATERIAL:
HOUSING: LCP, GLASS FILLED, UL94V-0.
TERMINALS: HIGH PERFORMANCE COPPER ALLOY.
- 2 FINISH:
30μ" MIN GOLD IN CONTACT AREA. SELECTIVE TIN ON PCB TAILS, NICKEL OVERALL.
- 3. SCREWS PACKAGED IN END OF PACKAGING TUBE.
- 4 FOR GROUNDED GUIDE PIN USE Ø3.56±0.08 PTH, Ø3.66 DRILL, AND Ø6.5 PAD.
- 5. KEYING PIN SHOWN IN POSITION A, SEE KEYING CHART ON SHEET 2 FOR OTHER POSITIONS.



THIS DRAWING IS A CONTROLLED DOCUMENT.		DWN: KIRAN HOLAL 11JAN2013	 TE Connectivity
DIMENSIONS:		CHK: D. DIXON 11JAN2013	
mm		APVD: D. DIXON 11JAN2013	
0 PLC ± 1 PLC ±0.25 2 PLC ±0.13 3 PLC ± 4 PLC ± ANGLES ±		NAME: IMPACT, 4 PAIR, 16 COLUMN, HEADER LEFT GUIDED, OPEN END WALL SIGNAL MODULE, 0.46 PTH	
MATERIAL: SEE TABLE		WEIGHT: -	RESTRICTED TO: -
FINISH: SEE TABLE		SIZE: A100779C=2007824	SCALE: 6:1 SHEET 1 OF 2 REV A
Customer Drawing			

THIS DRAWING IS UNPUBLISHED. RELEASED FOR PUBLICATION 20
 © COPYRIGHT 20 BY - ALL RIGHTS RESERVED.

LOC	DIST	REV	DATE	BY	APPV
AD	00				



	H	5.5	8-2007824-3
	H	4.9	8-2007824-2
	H	4.5	8-2007824-1
	G	5.5	7-2007824-3
	G	4.9	7-2007824-2
	G	4.5	7-2007824-1
	F	5.5	6-2007824-3
	F	4.9	6-2007824-2
	F	4.5	6-2007824-1
	E	5.5	5-2007824-3
	E	4.9	5-2007824-2
	E	4.5	5-2007824-1
	D	5.5	4-2007824-3
	D	4.9	4-2007824-2
	D	4.5	4-2007824-1
	C	5.5	3-2007824-3
	C	4.9	3-2007824-2
	C	4.5	3-2007824-1
	B	5.5	2-2007824-3
	B	4.9	2-2007824-2
	B	4.5	2-2007824-1
	A	5.5	1-2007824-3
	A	4.9	1-2007824-2
	A	4.5	1-2007824-1
	-	5.5	2007824-3
	-	4.9	2007824-2
	-	4.5	2007824-1
FINISH	KEY POSITION	DIM M	PART NUMBER

REFER TO WWW.TE.COM
FOR PRODUCT AVAILABILITY

THIS DRAWING IS A CONTROLLED DOCUMENT.		OWN: KIRAN HOLAL 11JAN2013	TE Connectivity
DIMENSIONS: mm		CHK: D. DIXON 11JAN2013	
TOLERANCES UNLESS OTHERWISE SPECIFIED:		APV: D. DIXON 11JAN2013	NAME: IMPACT, 4 PAIR, 16 COLUMN, HEADER LEFT GUIDED, OPEN END WALL SIGNAL MODULE, 0.46 PTH
0 PLC ±0.25		PRODUCT SPEC	
1 PLC ±0.13		APPLICATION SPEC	SIZE: CAGE CODE DRAWING NO
2 PLC ±		RESTRICTED TO	A100779C=2007824
3 PLC ±		WEIGHT	SCALE 5:1 SHEET 2 OF 2 REV A
4 PLC ±		Customer Drawing	
ANGLES			
FINISH SEE TABLE			