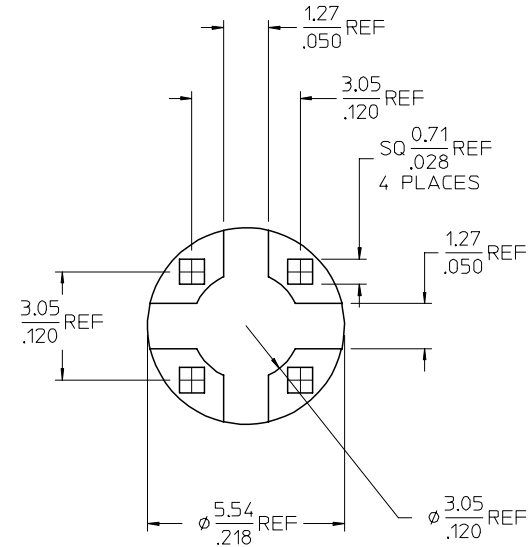
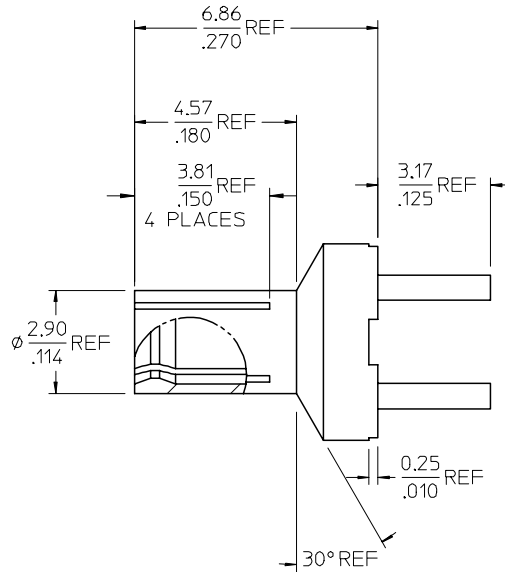
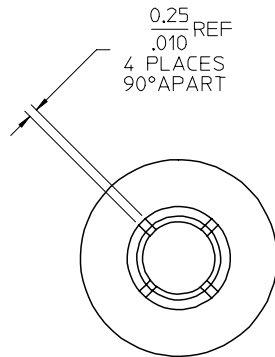
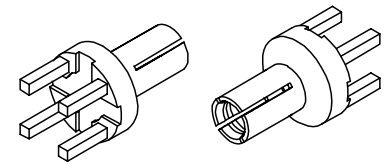
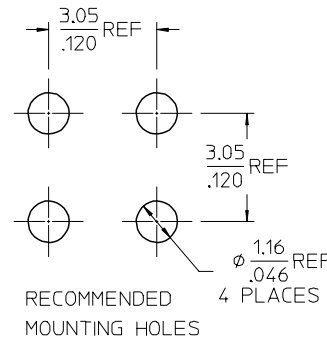


MATERIALS AND FINISHES  
 BODY BERYLLIUM COPPER  
 PLATED GOLD (30 MICROINCHES MIN)



INSERTION FORCE: 13.35N(3 LBS) - 22.25N(5 LBS)  
 WITHDRAWAL FORCE: 16.47N(3.7 LBS) - 26.7N (6 LBS)

PART # 73218-0050



- UNLESS OTHERWISE SPECIFIED DIMS ARE MILLIMETERS AND ANGLES ARE DEGREES.
- $\nabla$  ALL OVER.
  - NO CHATTER OR NON-UNIFORM SURFACE FINISH ALLOWED.
  - PARTS TO BE FREE OF BURRS & SHARP EDGES 0.13(.005) MAX BREAK.
  - EXTERNAL THREADS TO BE ROLLED OR SINGLE POINT.
  - DIAMETERS TO BE CONCENTRIC WITHIN 0.08(.003) TIR.

CHG: RELEASE DRAWING. EC NO: URF2005-0327 DRW: JARROBERTSON 2005/02/03 CHKD: SHAH 2005/02/03 APPR: JWEINER 2005/02/03	QUALITY SYMBOLS 	GENERAL TOLERANCES (UNLESS SPECIFIED)		DIMENSION STYLE MM/IN		SCALE	DESIGN UNITS METRIC	THIRD ANGLE PROJECTION	
		4 PLACES ± .005	± .005	DRAWN BY JM	DATE 2004/12/17	TITLE	RECEPTACLE, DC POWER PCB THRU HOLE M-PCB, EWR-2683		
		3 PLACES ± .005	± .005	CHECKED BY AZR	DATE 2005/01/13				
		2 PLACES ± .005	± .005	APPROVED BY JDW	DATE 2005/01/13	MATERIAL NO. 732180050	DOCUMENT NO. SD-73218-005	SHEET NO. 1 OF 1	
1 PLACE ± .005	± .005	ANGULAR ± 2 °		DRAFT WHERE APPLICABLE MUST REMAIN WITHIN DIMENSIONS		THIS DRAWING CONTAINS INFORMATION THAT IS PROPRIETARY TO MOLEX INCORPORATED AND SHOULD NOT BE USED WITHOUT WRITTEN PERMISSION			