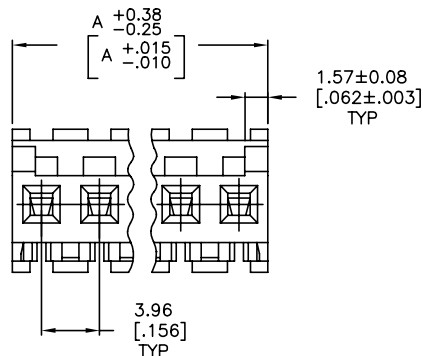
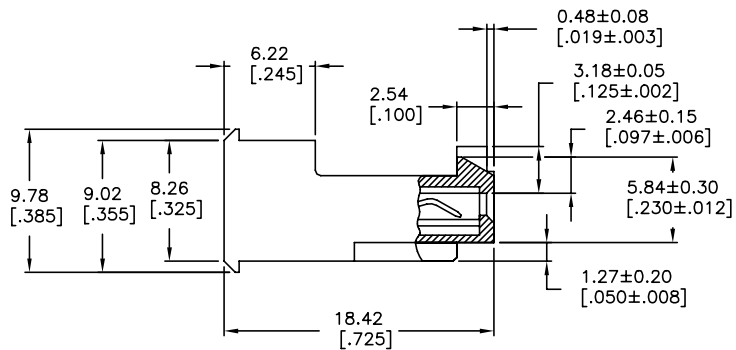
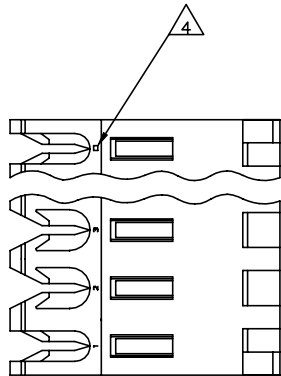


THIS DRAWING IS UNPUBLISHED. RELEASED FOR PUBLICATION  
 © COPYRIGHT - TE Connectivity Ltd. ALL RIGHTS RESERVED.

REVISIONS					
P	LYR	DESCRIPTION	DATE	DMN	APVD
E		REVISED PER ECR-20-000824	29MAY2020	PC	SW



1 MATERIAL: CONNECTOR - NYLON UL94V-2 (WHITE).  
 CONTACTS - 0.30[.012] THICK COPPER ALLOY  
 BRIGHT TIN-LEAD 0.00203[.000080] MIN THICK  
 FOR CONTACTS 644468-2 THRU 1-644468-4  
 MATTE WHISKER MITIGATED TIN 0.00203[.000080] MIN  
 THICKNESS OVER NICKEL UNDERPLATE FOR  
 3-644468-2 THRU 4-644468-4

- 2. CONTACTS ACCEPT 24 AWG WIRE WITH 2.41[.095] MAX INSULATION DIAMETER.
- 3. CONTACTS MUST ACCEPT 1.14±0.03[.045±.001] SQUARE POST AND REMAIN LOCKED IN POSITION.
- 4 IDENTIFICATION NUMBER FOR LAST CIRCUIT MAY NOT APPEAR ON ALL ASSEMBLIES.
- 5. DIMENSIONS IN BRACKETS ARE IN INCHES.
- 6. HOUSING FEATURES ARE: FEED-THRU WITH LOCKING RAMP AND POLARIZING TAB.

7 OBSOLETE PARTS: OBSOLETE CIS STREAMLINING PER D.RENAUD/D.SINISI  
 8 OBSOLETE PARTS

55.47 [2.184]	14	4-644468-4
51.51 [2.028]	13	4-644468-3
47.55 [1.872]	12	4-644468-2
43.59 [1.716]	11	4-644468-1
39.62 [1.560]	10	4-644468-0
35.66 [1.404]	9	3-644468-9
31.70 [1.248]	8	3-644468-8
27.74 [1.092]	7	3-644468-7
23.77 [.936]	6	3-644468-6
19.81 [.780]	5	3-644468-5
15.85 [.624]	4	3-644468-4
11.89 [.468]	3	3-644468-3
7.92 [.312]	2	3-644468-2
<del>55.47 [2.184]</del>	<del>14</del>	<del>4-644468-4</del>
<del>51.51 [2.028]</del>	<del>13</del>	<del>4-644468-3</del>
<del>47.55 [1.872]</del>	<del>12</del>	<del>4-644468-2</del>
<del>43.59 [1.716]</del>	<del>11</del>	<del>4-644468-1</del>
<del>39.62 [1.560]</del>	<del>10</del>	<del>4-644468-0</del>
<del>35.66 [1.404]</del>	<del>9</del>	<del>3-644468-9</del>
<del>31.70 [1.248]</del>	<del>8</del>	<del>3-644468-8</del>
<del>27.74 [1.092]</del>	<del>7</del>	<del>3-644468-7</del>
<del>23.77 [.936]</del>	<del>6</del>	<del>3-644468-6</del>
<del>19.81 [.780]</del>	<del>5</del>	<del>3-644468-5</del>
<del>15.85 [.624]</del>	<del>4</del>	<del>3-644468-4</del>
<del>11.89 [.468]</del>	<del>3</del>	<del>3-644468-3</del>
<del>7.92 [.312]</del>	<del>2</del>	<del>3-644468-2</del>
	DIM A	NO. OF CIRCUITS
		PART NO

THIS DRAWING IS A CONTROLLED DOCUMENT.

DMN E. LEWIS 12 FEB 91	TE Connectivity Ltd.
CHK R. SWING 12 FEB 91	
APVD D. CLARK 20 FEB 91	MTA-156 CONNECTOR ASSEMBLY, 24 AWG, STANDARD
DIMENSIONS: mm [INCHES]	TOLERANCES UNLESS OTHERWISE SPECIFIED:
0 PLC ± -	1 PLC ± -
1 PLC ± -	2 PLC ± -
2 PLC ± -	3 PLC ± -
3 PLC ± -	4 PLC ± -
4 PLC ± -	ANGLES ± -
MATERIAL	FINISH
1	1

SIZE A2	CAGE CODE 00779	DRAWING NO C=644468	RESTRICTED TO -
CUSTOMER DRAWING			SCALE 4:1 SHEET 1 OF 1 REV E

644468

A