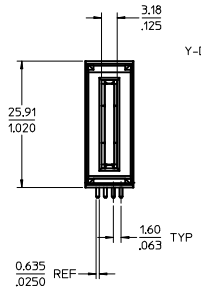
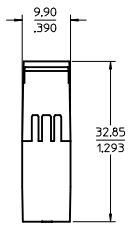
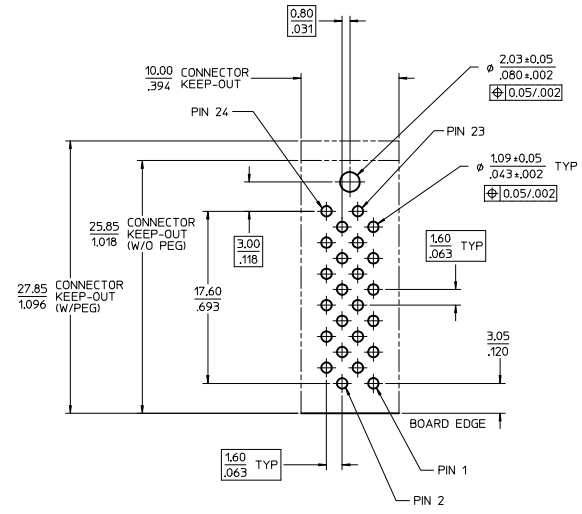
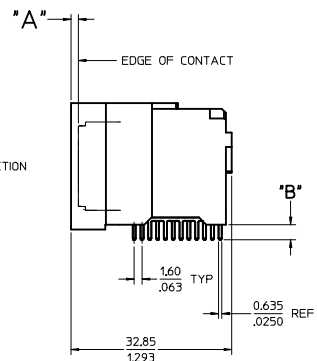


PART NUMBER	DIM 'A'	DIM 'B'	BLADE TYPE	PCB THICKNESS	PLATING	PEGS
75556-5000	0.00/.000	3.06/.120	LONG	2.39/.094	30μ INCH MIN SELECT HARD GOLD IN CONTACT AREA WITH 100μ INCH MIN SELECT TIN IN TAIL AREA OVER 50μ INCH MIN NICKEL OVERALL.	W/O PEGS
75556-5001	0.00/.000	3.81/.150	LONG	3.18/.125		
75556-5100	1.50/.059	3.06/.120	SHORT	2.39/.094		
75556-5101	1.50/.059	3.81/.150	SHORT	3.18/.125		
75556-1500	0.00/.000	3.06/.120	LONG	2.39/.094	30μ INCH MIN SELECT HARD GOLD IN CONTACT AREA WITH 100μ INCH MIN SELECT TIN IN TAIL AREA OVER 50μ INCH MIN NICKEL OVERALL.	W/PEGS
75556-1501	0.00/.000	3.81/.150	LONG	3.18/.125		
75556-1510	1.50/.059	3.06/.120	SHORT	2.39/.094		
75556-1511	1.50/.059	3.81/.150	SHORT	3.18/.125		

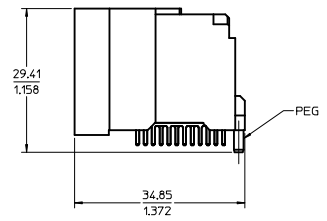


75556-5*** SHOWN (W/O PEG)



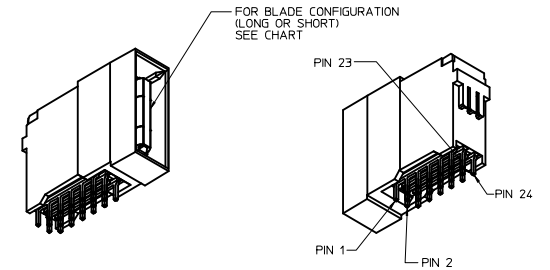
PCB LAYOUT SCALE: 4:1

RECOMMENDED MIN PCB THICKNESS : SEE TABLE

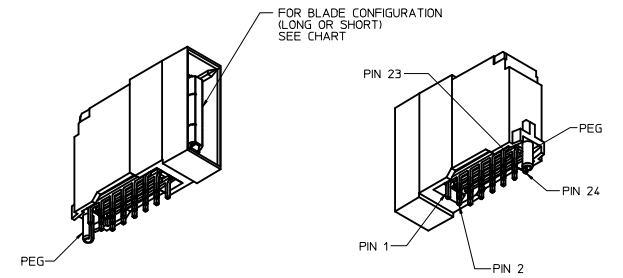


75556-15** SHOWN (W/PEG)

- NOTES:
- MATERIALS:
- HOUSING: 30% GLASS FILLED, LCP 94V-0, COLOR BLACK
- TERMINALS: COPPER ALLOY
- PLATING: PER ES-88 - SEE CHART
 - SEE CHART FOR REFERENCE DOCUMENTS
 - PLUG MATES WITH RECEPTACLE ASSEMBLIES: 75542-5000 & 75542-5001
 - MODULE IS DESIGNED FOR SOLDERING TO THE PCB
 - MODULE ASSEMBLY IS RoHS COMPLIANT
 - GATHERABILITY: ±0.65/.026 X-DIRECTION
±1.30/.051 Y-DIRECTION



75556-5100 SHOWN (W/O PEG)

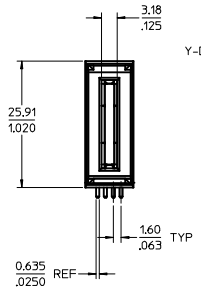
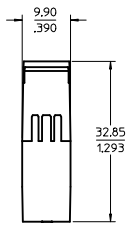


75556-1500 SHOWN (W/PEG)

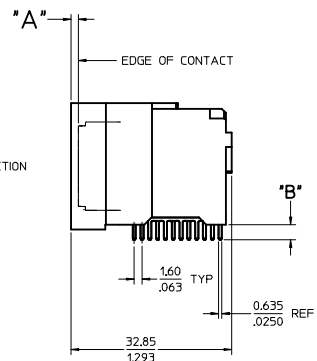
REFERENCE DOCUMENTS	
PS-75431-999	PRODUCT SPECIFICATION: PERFORMANCE AND RATINGS
SD-75555-***	FINAL ASSEMBLY CONFIGURATION DRAWING

REV	DESCRIPTION	QUALITY SYMBOLS		GENERAL TOLERANCES (UNLESS SPECIFIED)		DIMENSION STYLE		SCALE	DESIGN UNITS	THIRD ANGLE PROJECTION
		mm	INCH	mm	INCH	MM/IN	DATE	TITLE		
4	PLACES	±---	±---	±---	±---	AD RATNOL	2005/04/19	EXTREME POWERMASS 150 AMP MODULE, PLUG		
3	PLACES	±---	±.008	---	---	CHECKED BY	DATE			
2	PLACES	±0.20	±.013	---	---	M DATA	2005/04/19			
1	PLACE	±0.33	±---	---	---	APPROVED BY	DATE			
		ANGULAR ±1/2°				APATEL	2005/04/19			
DRAFT WHERE APPLICABLE MUST REMAIN WITHIN DIMENSIONS		MATERIAL NO.		DRAWN BY		DATE		TITLE		
		SEE CHART		AD RATNOL		2005/04/19		EXTREME POWERMASS 150 AMP MODULE, PLUG		
		DOCUMENT NO.		DRAWN BY		DATE		TITLE		
		SD-75556-100		AD RATNOL		2005/04/19		EXTREME POWERMASS 150 AMP MODULE, PLUG		
		SHEET NO.		DRAWN BY		DATE		TITLE		
		1 OF 1		AD RATNOL		2005/04/19		EXTREME POWERMASS 150 AMP MODULE, PLUG		

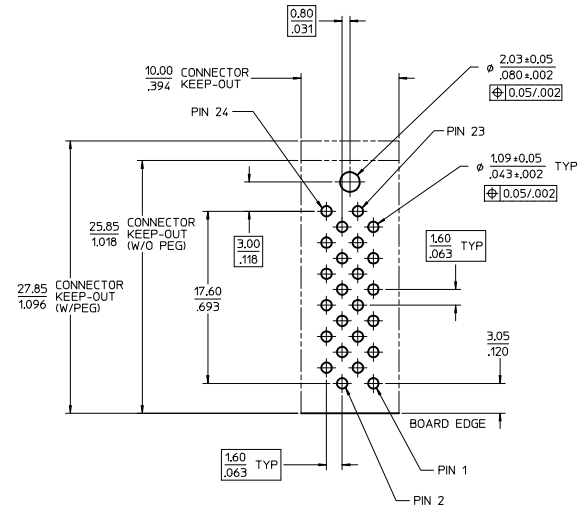
PART NUMBER	DIM 'A'	DIM 'B'	BLADE TYPE	PCB THICKNESS	PLATING	PEGS
75556-5000	0.00/.000	3.06/.120	LONG	2.39/.094	30μ INCH MIN SELECT HARD GOLD IN CONTACT AREA WITH 100μ INCH MIN SELECT TIN IN TAIL AREA OVER 50μ INCH MIN NICKEL OVERALL.	W/O PEGS
75556-5001	0.00/.000	3.81/.150	LONG	3.18/.125		
75556-5100	1.50/.059	3.06/.120	SHORT	2.39/.094		
75556-5101	1.50/.059	3.81/.150	SHORT	3.18/.125		
75556-1500	0.00/.000	3.06/.120	LONG	2.39/.094	30μ INCH MIN SELECT HARD GOLD IN CONTACT AREA WITH 100μ INCH MIN SELECT TIN IN TAIL AREA OVER 50μ INCH MIN NICKEL OVERALL.	W/PEGS
75556-1501	0.00/.000	3.81/.150	LONG	3.18/.125		
75556-1510	1.50/.059	3.06/.120	SHORT	2.39/.094		
75556-1511	1.50/.059	3.81/.150	SHORT	3.18/.125		



75556-5*** SHOWN (W/O PEG)

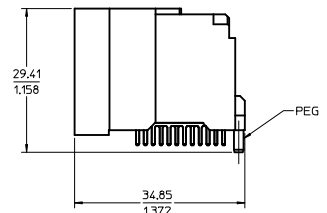


75556-5*** SHOWN (W/O PEG)

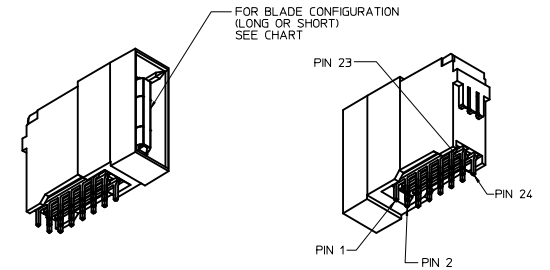


PCB LAYOUT SCALE: 4:1

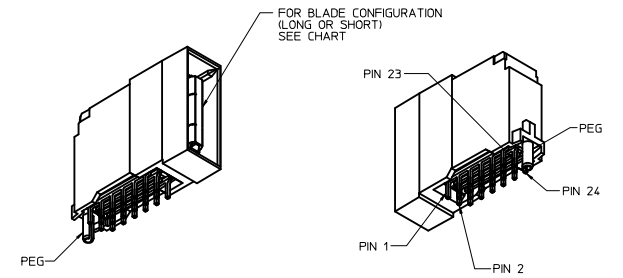
RECOMMENDED MIN PCB THICKNESS : SEE TABLE



75556-15** SHOWN (W/PEG)



75556-5100 SHOWN (W/O PEG)



75556-1500 SHOWN (W/PEG)

- NOTES:
- MATERIALS:
- HOUSING: 30% GLASS FILLED, LCP 94V-0, COLOR BLACK
- TERMINALS: COPPER ALLOY
- PLATING: PER ES-88 - SEE CHART
 - SEE CHART FOR REFERENCE DOCUMENTS
 - PLUG MATES WITH RECEPTACLE ASSEMBLIES: 75542-5000 & 75542-5001
 - MODULE IS DESIGNED FOR SOLDERING TO THE PCB
 - MODULE ASSEMBLY IS RoHS COMPLIANT
 - GATHERABILITY: ±0.65/.026 X-DIRECTION
±1.30/.051 Y-DIRECTION

REFERENCE DOCUMENTS	
PS-75431-999	PRODUCT SPECIFICATION: PERFORMANCE AND RATINGS
SD-75555-***	FINAL ASSEMBLY CONFIGURATION DRAWING

REV	DESCRIPTION	QUALITY SYMBOLS		GENERAL TOLERANCES (UNLESS SPECIFIED)		DIMENSION STYLE		SCALE	DESIGN UNITS	THIRD ANGLE PROJECTION
		mm	INCH	mm	INCH	MM/IN	METRIC	2:1	METRIC	⊙
1	REVISION CHART	4 PLACES	±.008	±.008	±.008	DRAWN BY	DATE	TITLE	EXTREME POWERMASS 150 AMP MODULE, PLUG	
2	2016/10/10	3 PLACES	±.015	±.015	±.015	CHECKED BY	DATE			
3	2016/11/14	2 PLACES	±.020	±.013	±.013	APPROVED BY	DATE			
4	2016/11/15	1 PLACE	±.033	±.033	±.033	MATERIAL NO.	DATE			
					ANGULAR ±1/2°	SEE CHART			MOLEX INCORPORATED	
					DRAFT WHERE APPLICABLE MUST REMAIN WITHIN DIMENSIONS	SIZE D			SD-75556-100	