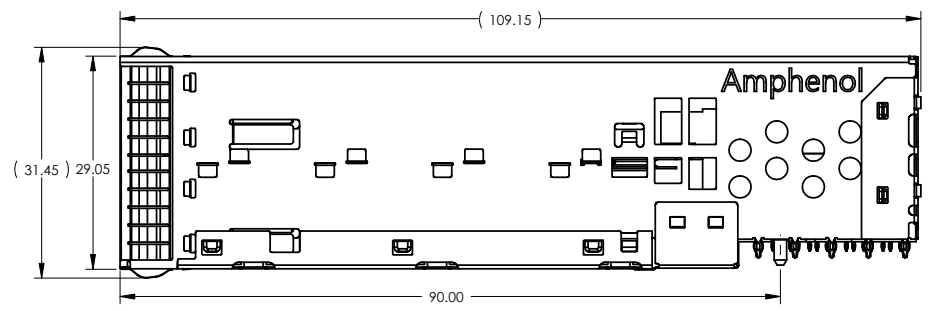
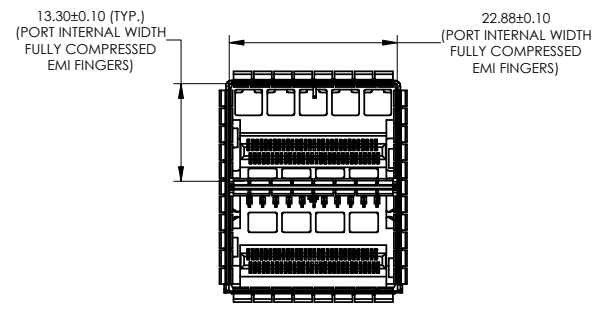
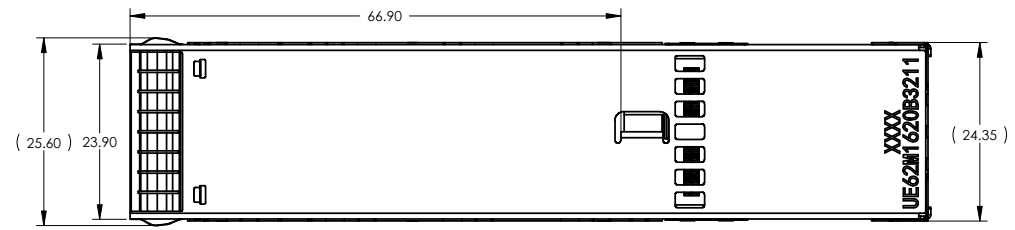
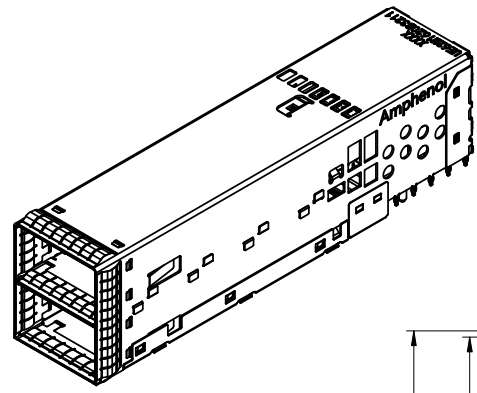


8 7 6 5 4 3 2 1

REVISIONS				
REV.	ECN	DESCRIPTION	DATE	APPROVED
A		PROPOSAL	APR 25,17	J.SI
B		UPDATED	APR 27,17	J.SI

NOTES:

- 1) MATERIAL:
 CAGE - PRESS FIT:
 COPPER ALLOY
 CONNECTOR - PRESS FIT:
 PLASTIC HOUSING:
 LCP, FLAMMABILITY RATING UL94-V0
 CHICKLETS:
 LEADFRAME:
 PHOSPHOR BRONZE
 OVERMOLDING:
 LCP
- 2) PLATING:
 CAGE:
 2.54 µm MIN. NICKEL.
 CHICKLETS LEADFRAME:
 1.27 µm MIN NICKEL OVERALL PLATING
 0.76 µm MIN GOLD ON MATING AREA
 1.20-3.80 µm MATTE TIN ON TERMINATIONS
- 3) PACKAGING: TRAY PACKAGING.
- 4) COMPLIES WITH OSFP MSA REV 1.0.
- 5) AMPHENOL PART NUMBER:
UE62-M1620-B3211



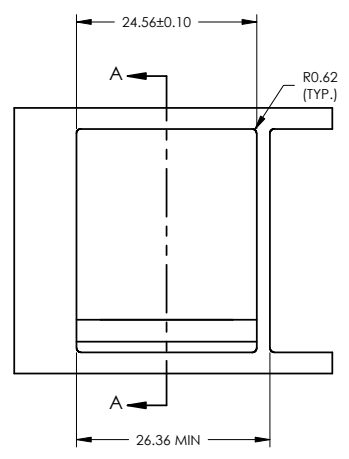
DO NOT SCALE DRAWING

THIS DOCUMENT CONTAINS PROPRIETARY INFORMATION AND SUCH INFORMATION MAY NOT BE DISCLOSED TO OTHERS FOR ANY PURPOSE OR USED FOR MANUFACTURING PURPOSES WITHOUT PERMISSION FROM AMPHENOL CANADA CORP.

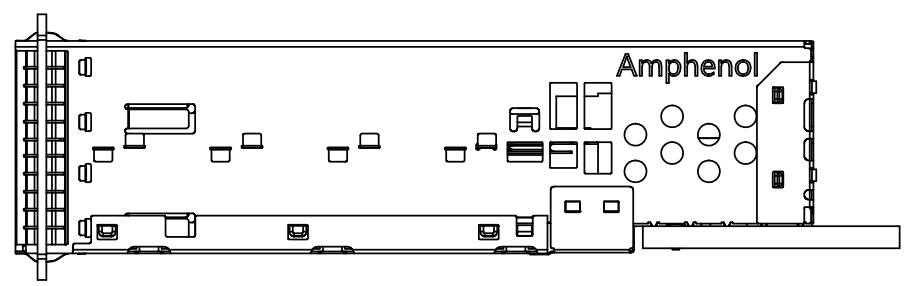
UNLESS OTHERWISE SPECIFIED DIMENSIONS ARE IN MILLIMETERS TOLERANCES ARE:		APPROVALS		DATE		Amphenol High Speed Interconnects A Division of Amphenol Corp. www.amphenol-highspeed.com					
DECIMALS XX ± 0.25 XXX ± 0.15		ANGLES ± 0.5°		DRAWN Mike. H		APR 25,17		TITLE		2X1 OSFP COMBO	
MATERIAL AND FINISH SEE NOTE 1		CHECKED Chigow.X		DESIGNED		APR 25,17		QA APPD			
REF.		E APPD		SCALE		1:1		SIZE A3		DWG. NO. P-UE62-M1620-B3211	
CODE IDENT. NO. 03554		DWG APPD J.SI		APR 25,17		PROJECT UE62		SHEET 1 OF 3		REV. B	

8 7 6 5 4 3 2 1

REVISIONS				
REV.	ECN	DESCRIPTION	DATE	APPROVED
A		PROPOSAL	APR 25,17	J.SI
B		UPDATED	APR 27,17	J.SI



SECTION A-A
SCALE 1.5 : 1



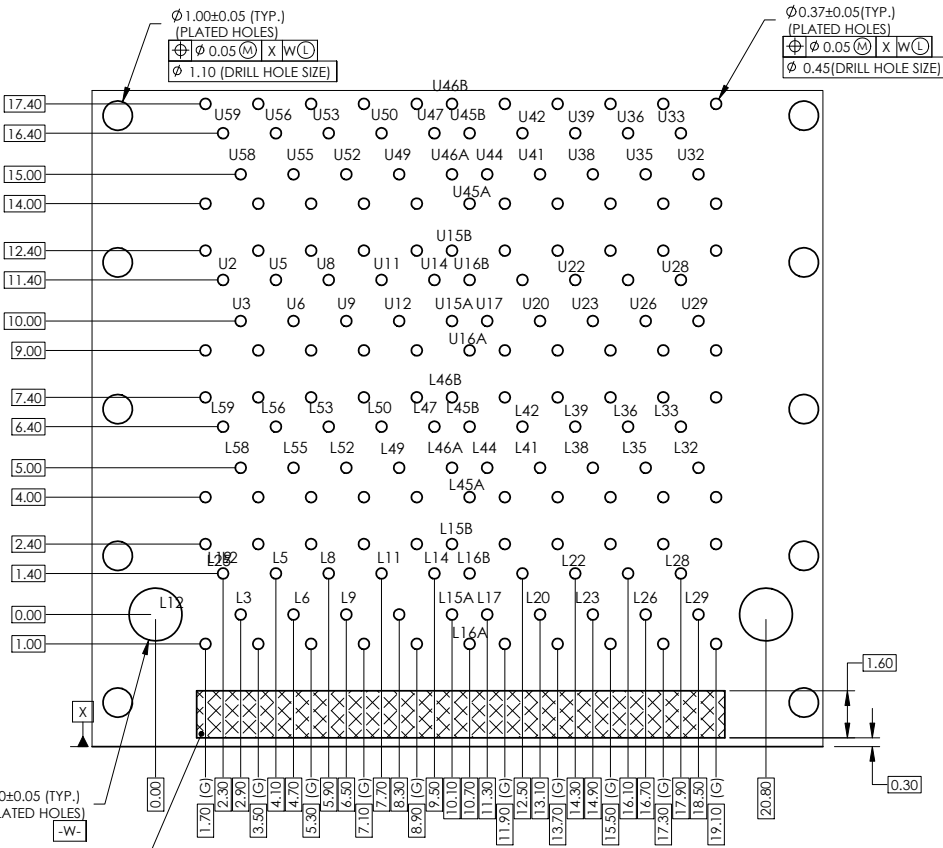
DO NOT SCALE DRAWING

THIS DOCUMENT CONTAINS PROPRIETARY INFORMATION AND SUCH INFORMATION MAY NOT BE DISCLOSED TO OTHERS FOR ANY PURPOSE OR USED FOR MANUFACTURING PURPOSES WITHOUT PERMISSION FROM AMPHENOL CANADA CORP.

UNLESS OTHERWISE SPECIFIED DIMENSIONS ARE IN MILLIMETERS TOLERANCES ARE:		APPROVALS		DATE		Amphenol High Speed Interconnects A Division of Amphenol Corp. www.amphenol-highspeed.com	
DECIMALS XX ± 0.25 X.XX ± 0.15		ANGLES ± 0.5°		DRAWN Mike. H APR 25,17		TITLE	
MATERIAL AND FINISH SEE NOTE 1		CHECKED Chigow.X APR 25,17		DESIGNED		2X1 OSFP COMBO	
REF.		E APPD		QA APPD		SIZE A3	
CODE IDENT. NO. 03554		DWG APPD J.SI APR 25,17		SCALE 1:1		DWG. NO. P-UE62-M1620-B3211	
		PROJECT UE62		SHEET 2 OF 3		REV. B	

NOTES:

- PIN ASSIGNMENT L=LOW PORT,U=UPPER PORT. SEE PINOUT TABLE FOR DETAILS.
- L/U15A/B, 16A/B, 45A/B AND 46A/B ARE POWER PINS. L15A/B AND L46A/B CONNECTED, L16 AND 45 CONNECTED. U15A/B AND U46A/B CONNECTED, U16 AND U45 CONNECTED.



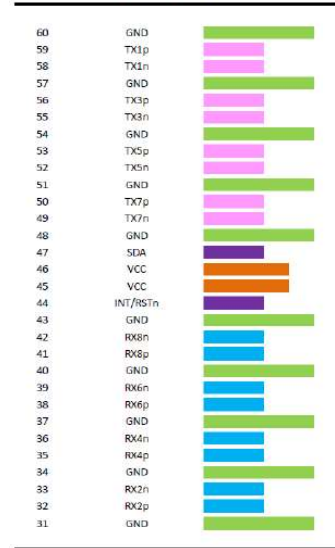
DETAIL B
SCALE 6 : 1

DO NOT SCALE DRAWING

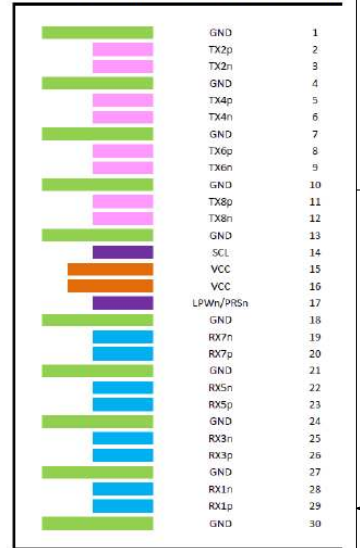
THIS DOCUMENT CONTAINS PROPRIETARY INFORMATION AND SUCH INFORMATION MAY NOT BE DISCLOSED TO OTHERS FOR ANY PURPOSE OR USED FOR MANUFACTURING PURPOSES WITHOUT PERMISSION FROM AMPHENOL CANADA CORP.

REVISIONS				
REV.	ECN	DESCRIPTION	DATE	APPROVED
A		PROPOSAL	APR 25,17	J.SI
B		UPDATED	APR 27,17	J.SI

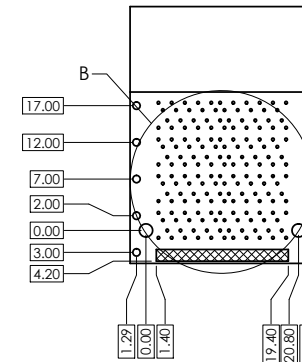
Top Side (viewed from top)



Bottom Side (viewed from bottom)



OSFP module pinout



UNLESS OTHERWISE SPECIFIED DIMENSIONS ARE IN MILLIMETERS TOLERANCES ARE: DECIMALS ANGLES XX ± 0.25 ± 0.5° X.XX ± 0.15	APPROVALS	DATE	Amphenol High Speed Interconnects A Division of Amphenol Corp. www.amphenol-highspeed.com TITLE 2X1 OSFP COMBO	
	DRAWN Mike. H	APR 25,17		
	DESIGNED			
	CHECKED Chigow.X	APR 25,17		
MATERIAL AND FINISH	SEE NOTE 1	GA APPD		
REF.	E APPD		SIZE A3	DWG. NO. P-UE62-M1620-B3211
CODE IDENT. NO. 03554	DWG APPD J.SI	APR 25,17	SCALE 1:1	PROJECT UE62 SHEET 3 OF 3