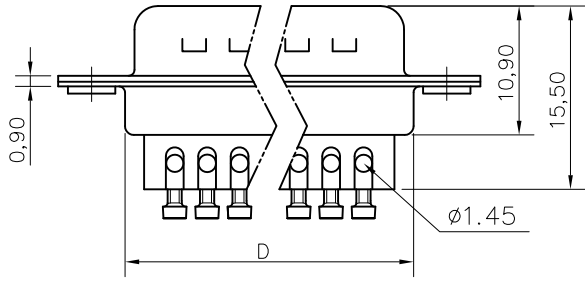
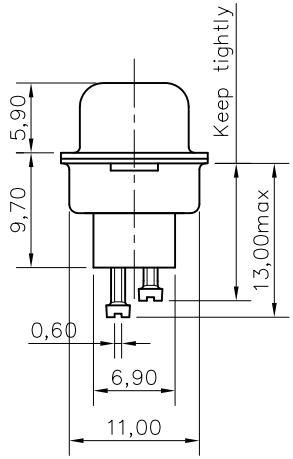
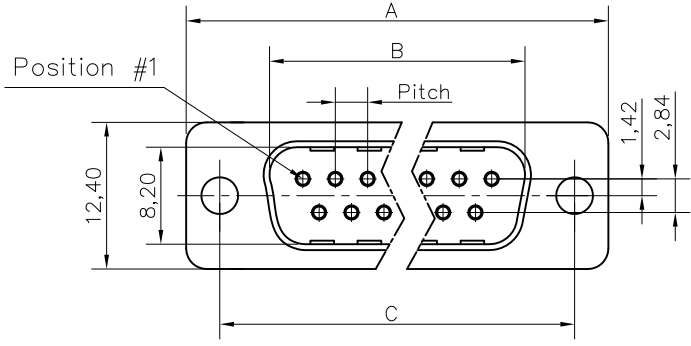


This document is the property of Amphenol Corporation and is delivered on the express condition that it is not to be disclosed, reproduced or used, in whole or in part, for manufacture or sale by anyone other than Amphenol Corporation without its prior consent, & that no right is granted to disclose or to use any information in this document.



Customer drawing

DIM.S	A	B	C	D	Pitch
9	30.70	16.80	25.00	19.40	2.74
15	39.00	25.10	33.30	27.70	2.74
25	52.90	38.80	47.00	41.40	2.77
37	69.20	55.30	63.50	57.90	2.77

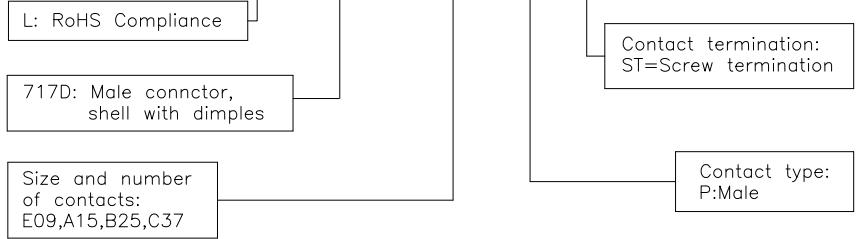
REVISIONS				
SYM	ECN	DESCRIPTION	DATE	APPROVED
1	HK--	First Release Drawing	12/14/07	IP
2	HK--	Update the Drawing	10/20/14	IP

**D-SUB TECHNICAL DATA**

SHELL : Steel 2.5um(100u") min tin over 1.25um(50u") min nickel  
 BODY : Glass filled thermoplastic.  
 Flame retardant to UL94 V-0Color Black  
 CONTACTS : Brass  
 0.1um(4u") min gold over 1.25um(50u") min nickel  
 SCREWLOCK : Copper alloy (no plating)  
 ELECTRICAL : Voltage rating : 300 V RMS at 50 Hz  
 Current rating 7.5A.  
 Insulation resistance >5000 M Ohms  
 Contact resistance 20 mOhms max.  
 CLIMATIC : Temperature range -55 °C up to 85°C, peak at 125°C  
 Damp heat 21 days(40 °C-95% HR)  
 MARKING : Amphenol...(Series No.)  
 Commercial reference  
 Manufacturing date

**PRODUCT CODE**

**L 717D XXX P ST**



UNLESS OTHERWISE SPECIFIED TOLERANCES		APPROVAL	DATE
U.S.	METRIC	DRAWN	DATE
.X	+/- 0.50	Felix Liu	10/20/14
.XX	+/- 0.30	CHECKED	
.XXX	+/- 0.20	Tony Tang	10/20/14
FRACTIONS	+/-	CHECKED	
ANGLES	+/- 2'		
FOR MATERIALS AND FINISHES SEE NOTES		DRAWING FILE :	
REMOVE SHARP EDGES		ANGLE OF PROJECTION	
DIMENSIONS			
U.S.	INCHES		
METRIC	MM		

Amphenol	
Amphenol East Asia Limited	
TITLE Machined contacts, D-ST series	
SIZE	DRAWING NO.
A4	L717DXXXPST
SCALE	NONE
SHEET	1 OF 1
REV.	2