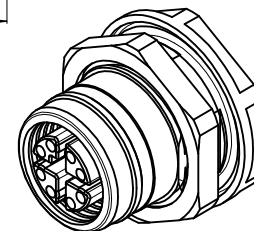
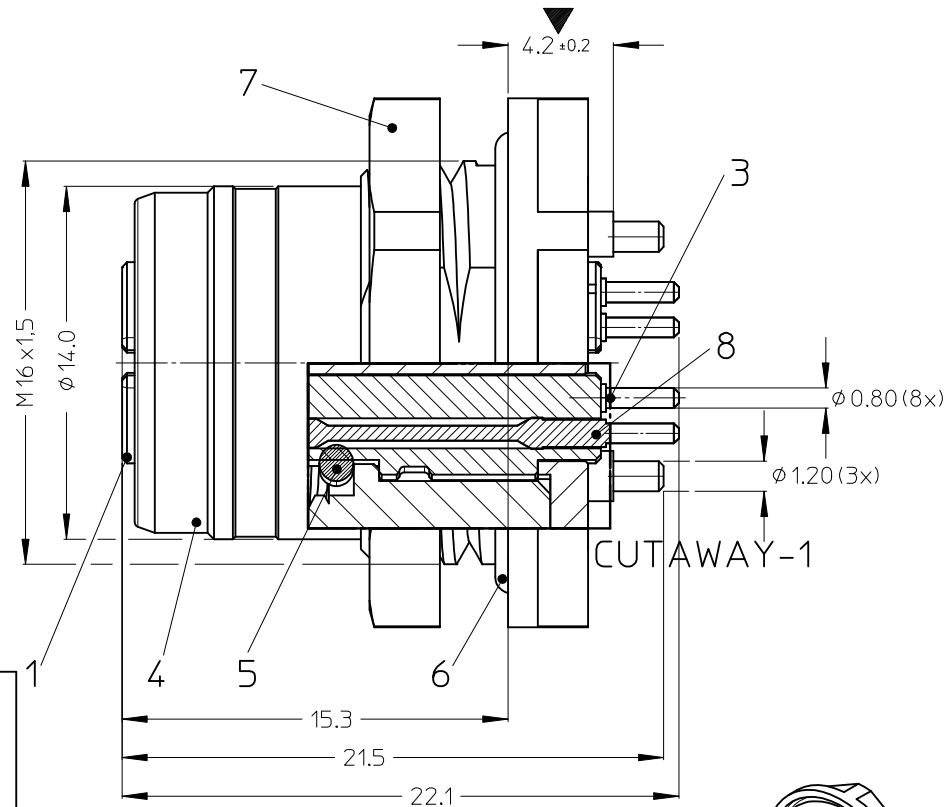
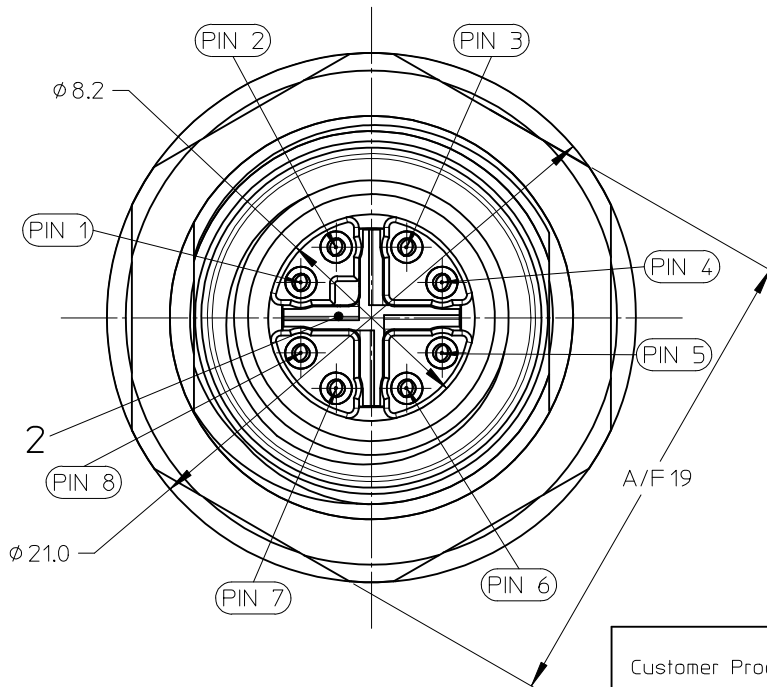


10 9 8 7 6 5 4 3 2 1



(2:1)

Customer Product Approval  
 Approved by: \_\_\_\_\_  
 Date: \_\_\_\_\_  
 Must be signed and returned before  
 Production will begin

Technical Data:  
 M12 CAT6A receptacle back mount PCB 360° shielded.  
 Suited for wave application.

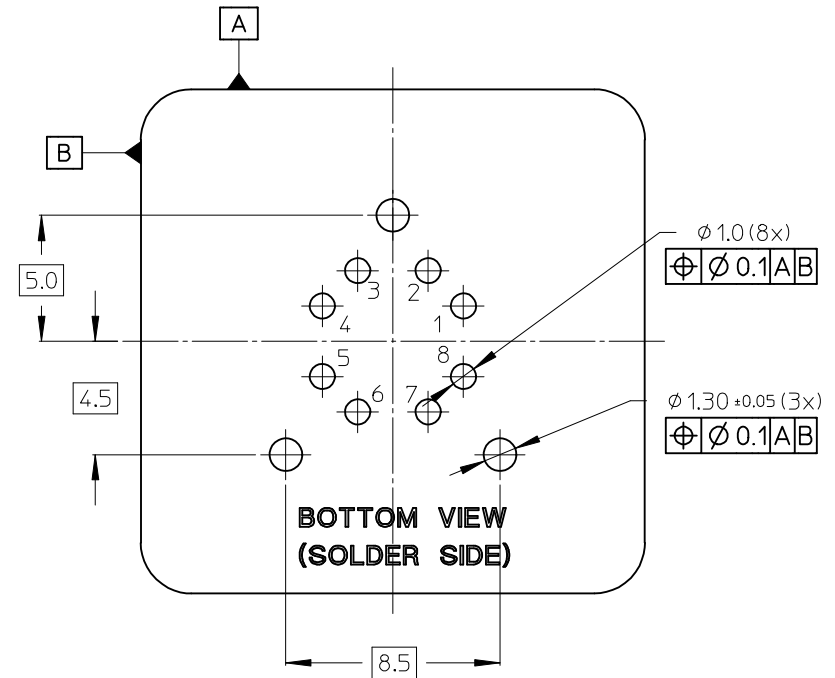
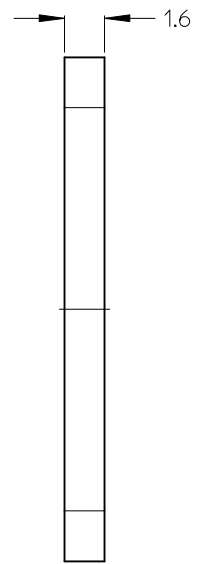
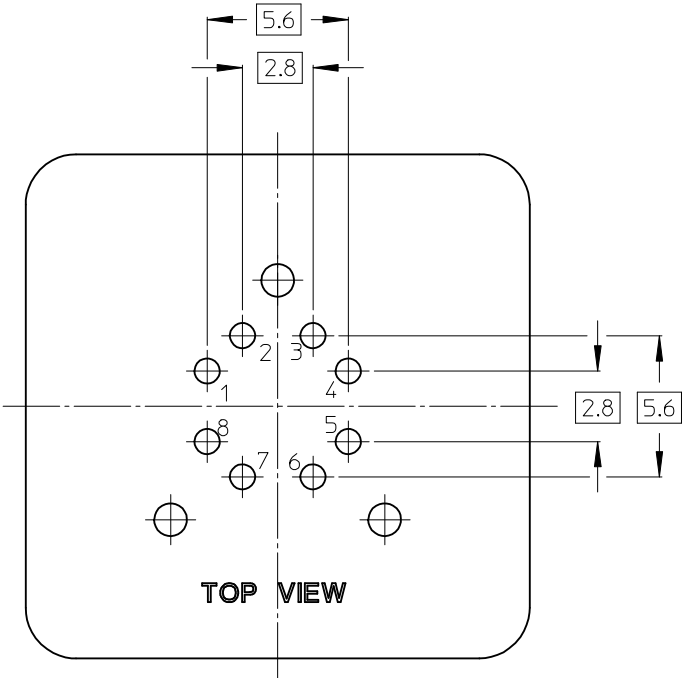
Poles: 8  
 Max. Voltage: 48V  
 Max Current: 0,5A  
 Contact resistance: <5m Ohm  
 Insulation withstand: >10QM Ohm  
 Protection: IP67  
 Temperature range: -40°C to 85°C  
 Transmission characteristics (category): CAT6

Packaging:  
 - The receptacles are delivered in blister packs a 40 parts

ITEM	QTY	COMPONENT	MATERIAL	FINISH
1	1	M12 CAT6A INSERT REC FEMALE	PA6-BLACK	SIMILAR RAL 9005
2	1	M12 CAT6A INNER SHIELDING CROSS SHELL	ZINK-DIECAST	NI PLATED
3	8	M12 CAT6A CONTACT FEM SOLDER PIN	BRASS	AU PLATED
4	1	M12 CAT6A REC HOUSING BACK MOUNT	BRASS	NI PLATED
5	1	O-RING 7,1x1,35	EPDM	BLACK
6	1	O-RING 15,7X1,3	EPDM	BLACK
7	1	LOCK NUT M16X1,5	BRASS	NI PLATED
8	1	POTTING MATERIAL	MS POLYMER	WHITE
9	1	PACKAGING TRAY 355x350	PET	NATURAL

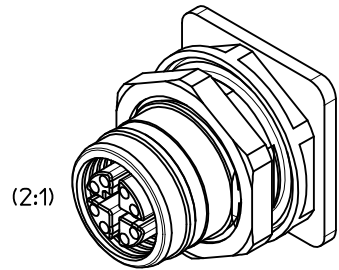
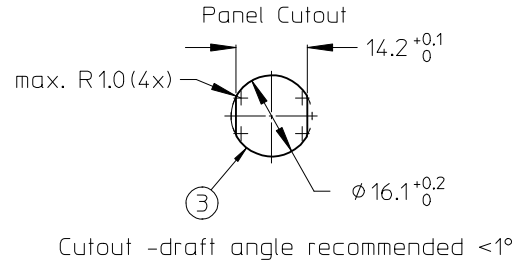
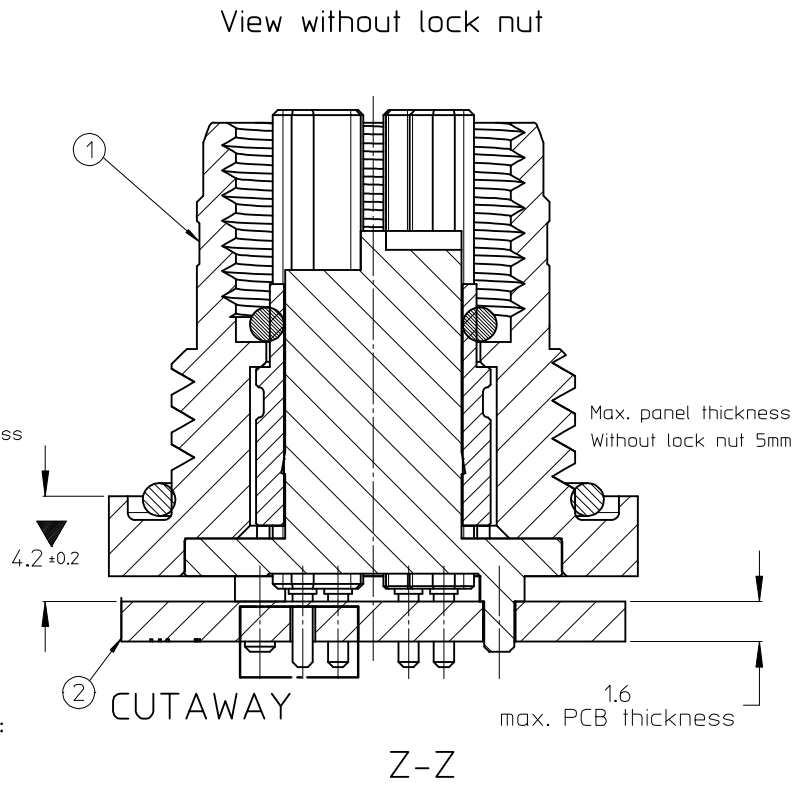
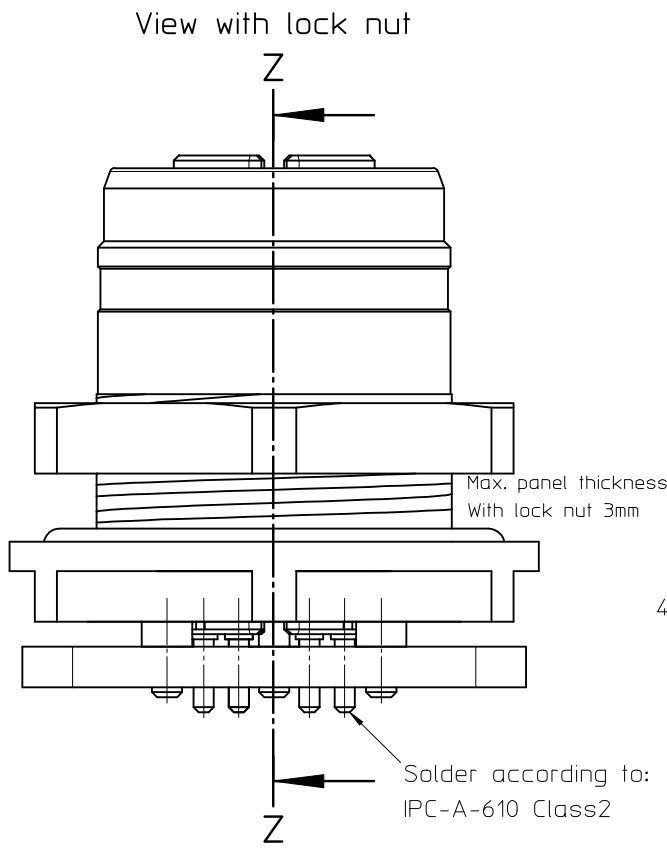
REVISED NOTES	QUALITY SYMBOLS	GENERAL TOLERANCES (UNLESS SPECIFIED)		DIMENSION STYLE		SCALE	DESIGN UNITS	THIRD ANGLE PROJECTION		
		mm	INCH	MM ONLY	DATE					
EC NO: IPG2015-1619 DRW:RSILLER 2015/03/13 CHKD:THAERT 2015/03/16 APPR:CBURGER 2015/03/19	▽=1 ◻=0	4 PLACES	± ---	± ---	RSILLER	2015/03/13	5:1	METRIC	TITLE REC M12 CAT6A 8P XC FE M16 BM SOL SHLD BR AU	
		3 PLACES	± ---	± ---	CHECKED BY	DATE				
		2 PLACES	± 0.05	± ---	THAERT	2015/03/16				
		1 PLACE	± 0.10	± ---	APPROVED BY	DATE				
		ANGULAR ± .5 °		CBURGER		2015/03/19				
DRAFT WHERE APPLICABLE MUST REMAIN WITHIN DIMENSIONS		MATERIAL NO.		1203410136	DOCUMENT NO.		SD-120341-136		SHEET NO.	1 OF 3
THIS DRAWING CONTAINS INFORMATION THAT IS PROPRIETARY TO MOLEX INCORPORATED AND SHOULD NOT BE USED WITHOUT WRITTEN PERMISSION										

9 8 7 6 5 4 3 2 1



PCB Pinout

SEE SHEET 1 EC NO: IPG2015-1619 DRW:RSILLER 2015/03/13 CHKD:THAERT 2015/03/16 APPR:CBURGER 2015/03/19	QUALITY SYMBOLS	GENERAL TOLERANCES (UNLESS SPECIFIED)	DIMENSION STYLE	SCALE	DESIGN UNITS	THIRD ANGLE PROJECTION
	$\nabla = 0$ $\square = 0$	mm INCH 4 PLACES $\pm$ --- $\pm$ --- 3 PLACES $\pm$ --- $\pm$ --- 2 PLACES $\pm 0.05$ $\pm$ --- 1 PLACE $\pm 0.10$ $\pm$ --- ANGULAR $\pm .5^\circ$	MM ONLY	5:1	METRIC	
	DRAWN BY: RSILLER CHECKED BY: THAERT APPROVED BY: CBURGER	DATE: 2015/03/13 DATE: 2015/03/16 DATE: 2015/03/19	TITLE	REC M12 CAT6A 8P XC FE M16 BM SOL SHLD BR AU		
	MATERIAL NO. 1203410136	DOCUMENT NO. SD-120341-136	MOLEX INCORPORATED			
DRAFT WHERE APPLICABLE MUST REMAIN WITHIN DIMENSIONS	SIZE A3	THIS DRAWING CONTAINS INFORMATION THAT IS PROPRIETARY TO MOLEX INCORPORATED AND SHOULD NOT BE USED WITHOUT WRITTEN PERMISSION				



- Pos. Description
- ① Receptacle Back Mount
  - ② PCB
  - ③ Cutout

- ASSEMBLY OF THE RECEPTACLE:
1. The receptacle (1) is soldered to PCB (2)(wave)  
The grounding can be over the ground pins of her receptacle and, if needed, over the midpoint of the shielding cross.
  2. The PCB with receptacles is mounted from the back side into the cutout(3) and fastened per screwing in or locknut.
  3. Recommended locknut torque: 3-4 Nm.  
Beware, do not damage soldered connections.
  4. Protection Cap torque: 0.5 Nm.

SEE SHEET 1 EC NO: IPG2015-1619 DRW:RSILLER 2015/03/13 CHKD:THAERT 2015/03/16 APPR:CBURGER 2015/03/19	QUALITY SYMBOLS ▽=1 C=0	GENERAL TOLERANCES (UNLESS SPECIFIED)		DIMENSION STYLE	SCALE	DESIGN UNITS	THIRD ANGLE PROJECTION	
		mm	INCH	MM ONLY	5:1	METRIC		
		4 PLACES ± --- ± ---		DRAWN BY	DATE	TITLE		
		3 PLACES ± --- ± ---		RSILLER	2015/03/13	REC M12 CAT6A 8P XC FE M16 BM SOL SHLD BR AU		
		2 PLACES ± 0.05 ± ---		CHECKED BY	DATE	MOLEX INCORPORATED		
		1 PLACE ± 0.10 ± ---		THAERT	2015/03/16	DOCUMENT NO.		
		ANGULAR ± .5 °		APPROVED BY	DATE	SHEET NO.		
		DRAFT WHERE APPLICABLE MUST REMAIN WITHIN DIMENSIONS		CBURGER	2015/03/19	3 OF 3		
				MATERIAL NO.	THIS DRAWING CONTAINS INFORMATION THAT IS PROPRIETARY TO MOLEX INCORPORATED AND SHOULD NOT BE USED WITHOUT WRITTEN PERMISSION			
				1203410136				
				SIZE A3				