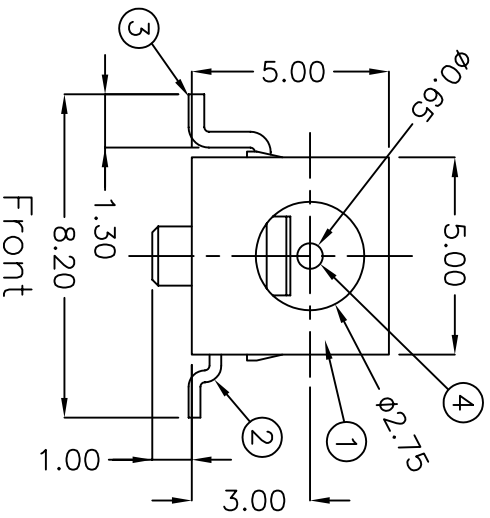
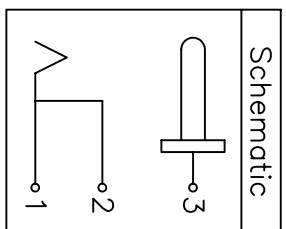
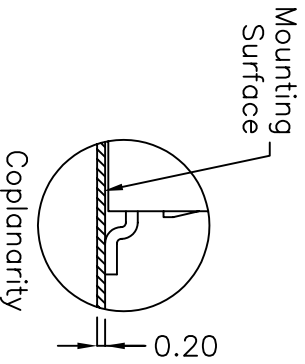


PCB Layout
(Top View)



- Specifications:
1. Insulation Resistance: 100MOhms min. (initial)
 2. Contact Resistance (initial): 30mOhm max at 100mA(max) 1KHz.
 3. Dielectric Withstand Voltage: AC 250V, 50 to 60Hz for 1 minute.
 4. Endurance: 5,000 Cycles 10 ~ 20 cycles per minute.
 5. Rated Voltage: 4.20 Volts DC
 6. Rated Current: 2.0 Amps DC
 7. Operating Temp: -25 to +85 deg. C.



No.	Description	Materials	Finish	Qty	Remark
1	Shield	SPCC	Nickel	1	40T
2	Center Pin	PBW	Silver	1	$\phi 0.65$
3	Shunt Terminal	Brass	Silver	1	40T
4	Spring Contact	Ti-Cu Alloy	Silver	1	30T
5	Plastic Housing	Polyamide	Black Color	1	UL94V-0



CUI INC

9615 SW Allen, Suite 103
Beaverton, OR 97005
Phone: (503) 643-4899
800-275-4899
Fax: (503) 372-1266
Website: www.cui.com

TITLE: **$\phi 0.65$ DC Power Jack, Surface Mount**

PART NO: PJ-022-SMT

UNITS: Millimeters

DRAWN BY: Todd White

APPROVED BY:

SCALE: 5x