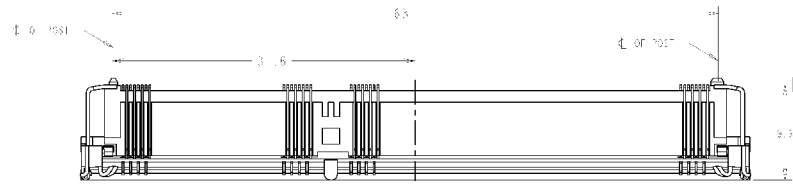
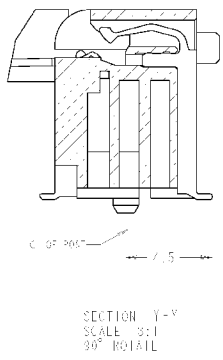
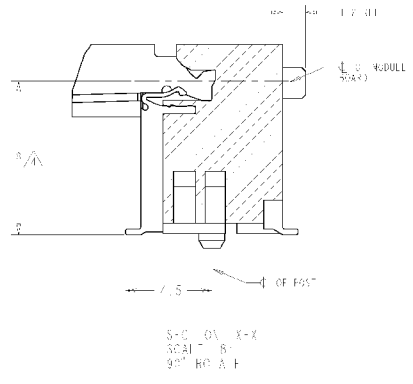
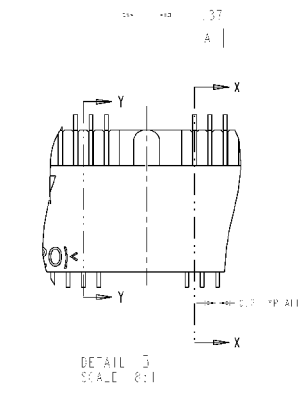
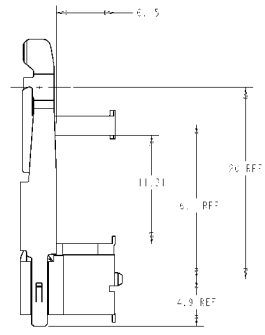
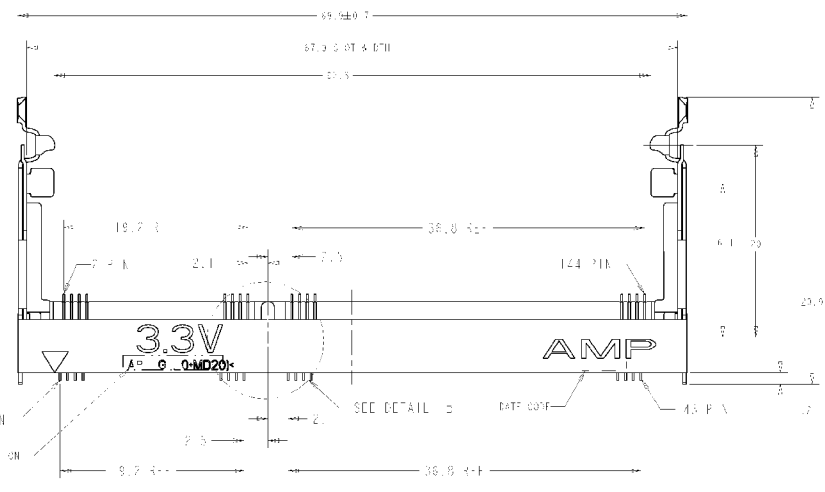


REV	DATE	BY	CHKD	LEVEL	DATE
1		J		REVISED	08-05-93

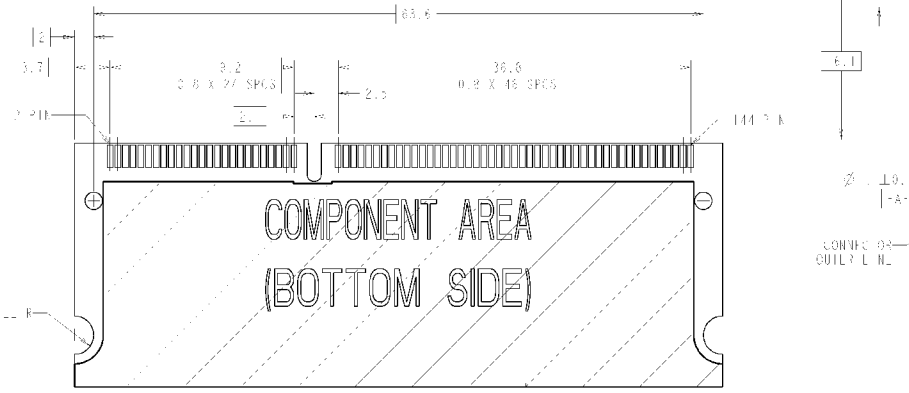
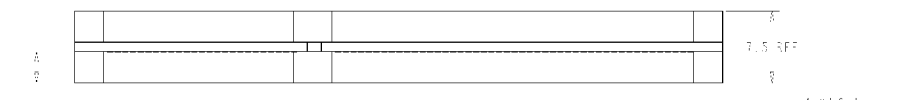
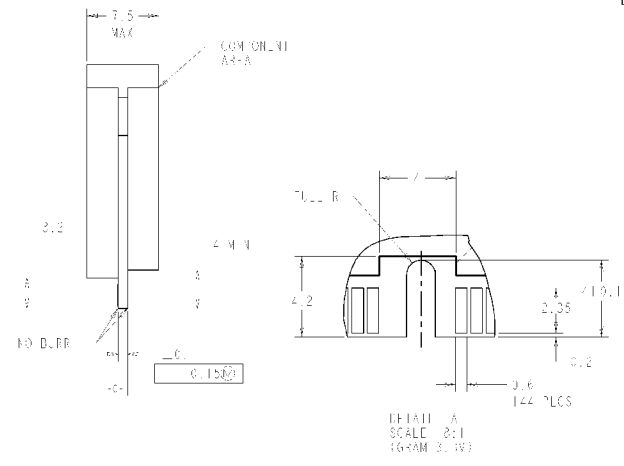
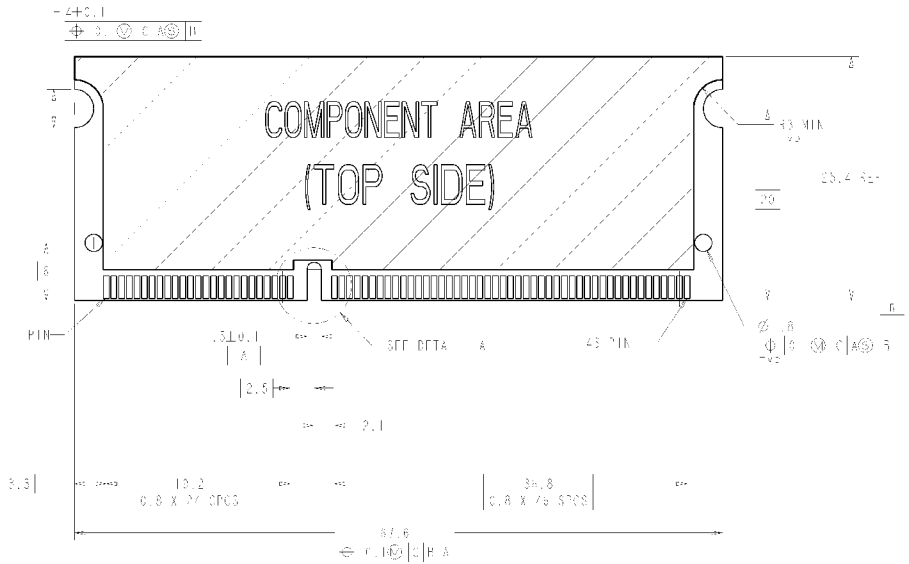


- △ VERTICAL HOLS NG. HIGH EFF. PLAC. C. 0.045-0 CONTACTS COPPER ALLOY TANK TEXTURE SUSSEPT. M. PLATING.
- △ FINISH: CONTACT AREA: 0.00015 MAX. HO. 0.001 MAX. ALL OTHER CALLS: 0.0005 MAX. SOLDERING: 0.0005 MAX. 0.00250 MAX. GOLD FLT.
- △ TOLERANCES NON-ACCUMULATIVE.
- △ DIMENSIONING TO HOLE CENTER UNLESS NOTED.
- △ PART TO BE PACKAGED PER IEC 60134-2 STANDARD. PULL DIAMETER SHALL BE 0.20mm, TAIL W. SHALL BE 0.8mm, AND TAIL F. TO SHALL BE 0.6mm.
- △ REVERSE SEE FIG.

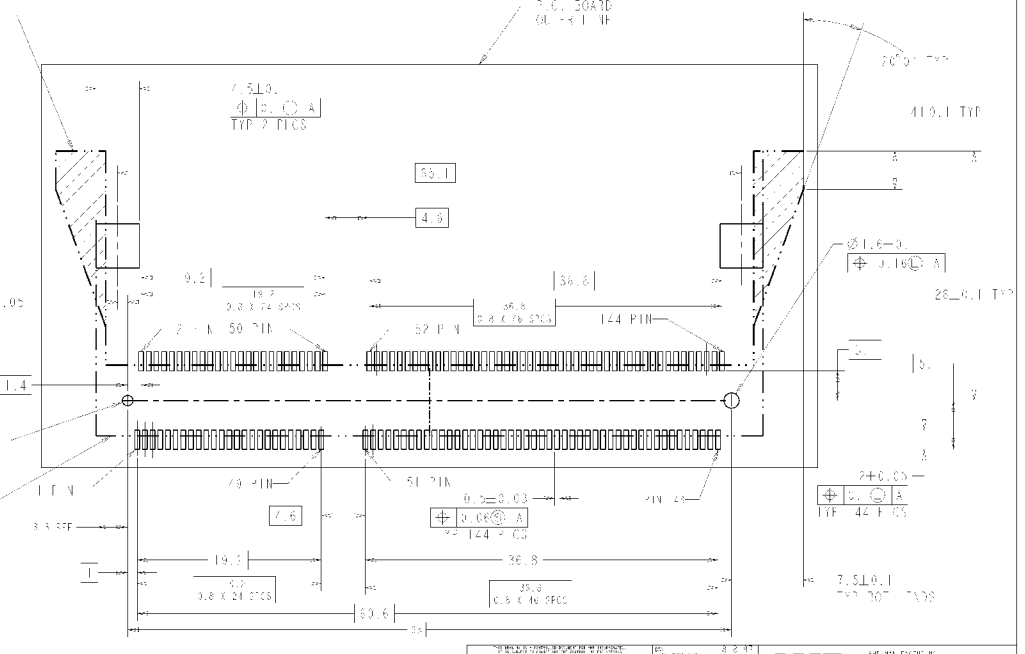


AVA LABEL	Q14K 3.3V	44	0.051 ±	△ △
AVA LABEL	Q14K 3.3V	44	0.051 ±	△
AVA LABEL	Q14K 3.3V	44	0.050 ±	
REMARKS	POWER SUPPLY POS. PAR. VALUE			

3.3V 1/4 WATT 5% TOL 100°C 100%		Q14K 3.3V 44 0.051 ±	AMP 7.0. BMM300K-ANST, 0.8mm PITCH 1/4 WATT, 5% TOL FOR SCRAM TYPE RESOLLS	00778 330 10
---	--	-------------------------------	--	-----------------



NO COMPONENT AREA.
 1 LAYER HOLES AREA.
 ACCEPT CIRCUIT FACTORY.



CONNECTOR MOUNTING SIDE LAYOUT
 (CONNECTOR MOUNTING SIDE)

DATE: 2018-08-10	BY: ...	CHKD: ...	APP. OF: ...
AMP AMP MANUFACTURING			
7.0 BIMU USER - ASST. 0.8mm PITCH			
FOR SCRAP TYPE MODULE			
PART NO: 00778			