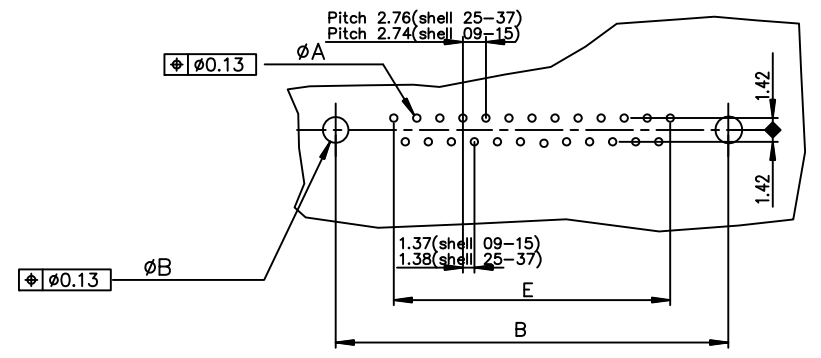


PC board drilling dimensions(after plating)  
(thickness ≤ 3.20±0.30mm)



ROHS PART NUMBER

SHELL	A±0.38	B±0.12	C±0.10	D±0.25	E±0.07	PART NUMBER	PART NUMBER
09	30.81	24.99	16.96	16.79	10.96	D09P91C4GI00LF	D09P91C6GI00LF
15	39.14	33.32	25.18	25.12	19.18	D15P91C4GI00LF	D15P91C6GI00LF
25	53.03	47.04	39.12	38.84	33.12	D25P91C4GI00LF	D25P91C6GI00LF
37	69.32	63.50	55.68	55.30	49.68	D37P91C4GI00LF	D37P91C6GI00LF
						200 Matings	500 Matings

GENERAL CHARACTERISTICS AND ROHS INFORMATIONS:  
SEE DRAWING C01-8646-0001

mat'l. code				surface ISO 1302 ✓		tolerance ISO 406 ISO 1101		projection		product family D-SUB	
ltr				ecn no		dr		date		title	
B				-		MPE		1996-07-24		MALE DELTA D CONNECTOR EUROPE	
C				LS05-004		MPE		2005-02-14		STRAIGHT PRESS-FIT	
D				LS06-0097		LGO		2006-07-29		scale 2:1	
E				LS06-0140		LGO		2006-09-22		dr	
F				111-0062		RPK		2011-04-05		engr MITHUN PAUL	
G				ELX-I-24020		AAB		2016-06-06		chr	
										appd BIJU K PAUL	
sheet index		revision G		sheet 1						Amphenol FCI	
										dwg no sheet 1 of 1 size	
										C01-8646-0422 A3	
										type Product Customer Drawing	