

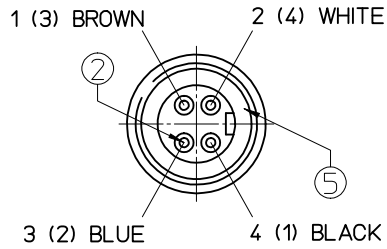
CABLE SPECIFICATION:

OUTER DIAMETER: 7.8±0.3 mm
 TEMPERATURE RANGE STATIC: -40 TO +90 °C (3000h)
 TEMPERATURE RANGE DYNAMIC: -25 TO +80 °C
 OMOLOGATION: UL STYLE 21215 + CSA ; RATING 80°C 600V
 VOLTAGE RATING: 1000 V (450/750)
 UV RESISTANT: YES (UL1581/2556- 300h)

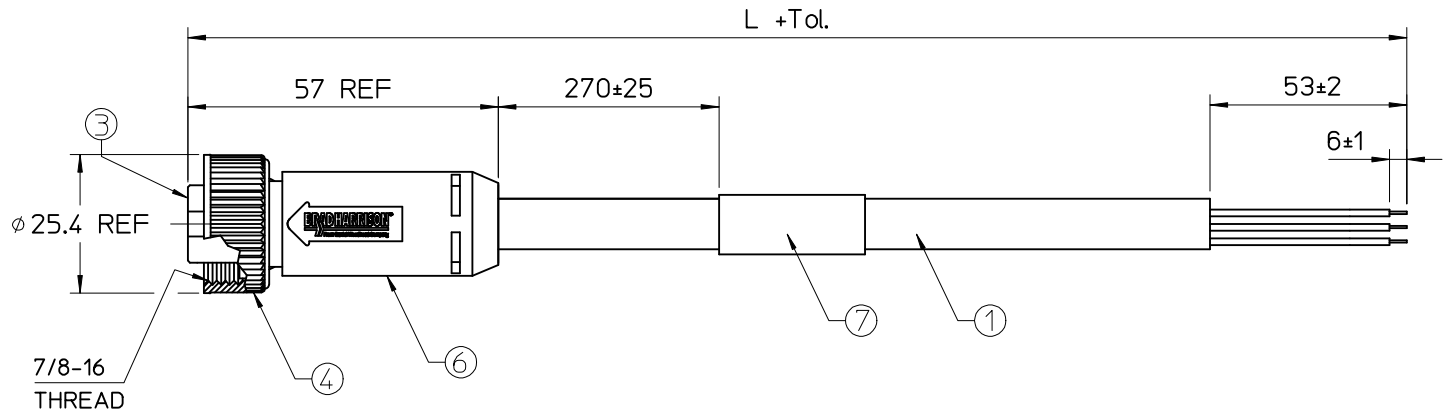
CHART 1

MOLEX PN	ENGINEERING PN	L [mm]
1300068179	104000B48M020	2000 +89
1300068180	104000B48M050	5000 +165
1300068181	104000B48M100	10000 +317
1300068182	104000B48M300	30000 +622
1300068195	104000B48M400	40000 +800

CENELEC PIN-OUT
 (SAE PIN-OUT IN PARANTHESIS)



VIEW FROM THE FRONT SIDE



Bill of Materials

ITEM	QTY.	DESCRIPTION	MATERIAL	FINISH
7	1	LABEL	-	-
6	-	OVERMOULD	TPU	BLACK
5	1	FRICTION RING - A SIZE	NYLON	-
4	1	M16 COUPLING NUT (A-SIZE)	ZINC ALLOY	BLACK
3	1	4P FEMALE INSERT A-SIZE	PUR	BLACK
2	4	FEMALE CONTACT	COPPER ALLOY	GOLD
1	-	CABLE 4x1.5mm²	TPU	GRAY

NEW PN ADDED IEC NO: IPG2015-0781 DRWN:FGAIK 2014/10/25 CH'KD:WSTRASKIEWI 2014/10/25 APPR:MIWASIECZKO 2014/11/04	DESCRIPTION B2	QUALITY SYMBOLS	GENERAL TOLERANCES (UNLESS SPECIFIED)	DIMENSION STYLE	SCALE	DESIGN UNITS	THIRD ANGLE PROJECTION	
		▽=0 ◻=0	mm INCH 4 PLACES ± --- ± --- 3 PLACES ± --- ± --- 2 PLACES ± 0.05 ± --- 1 PLACE ± 0.3 ± --- 0 PLACE ± 0.5 ± --- ANGULAR ± 1 °	MM ONLY	---	METRIC	DRAWN BY DATE FGAIK 2014/04/29 CHECKED BY DATE JMARSZALEK 2014/04/29 APPROVED BY DATE MIWASIECZKO 2014/06/16 MATERIAL NO.	TITLE MC-4P-FE-ST-XM-PUR
		DRAFT WHERE APPLICABLE MUST REMAIN WITHIN DIMENSIONS	SEE CHART 1	DOCUMENT NO. SD-130006-052	SHEET NO. 1 OF 1			
		THIS DRAWING CONTAINS INFORMATION THAT IS PROPRIETARY TO MOLEX INCORPORATED AND SHOULD NOT BE USED WITHOUT WRITTEN PERMISSION						