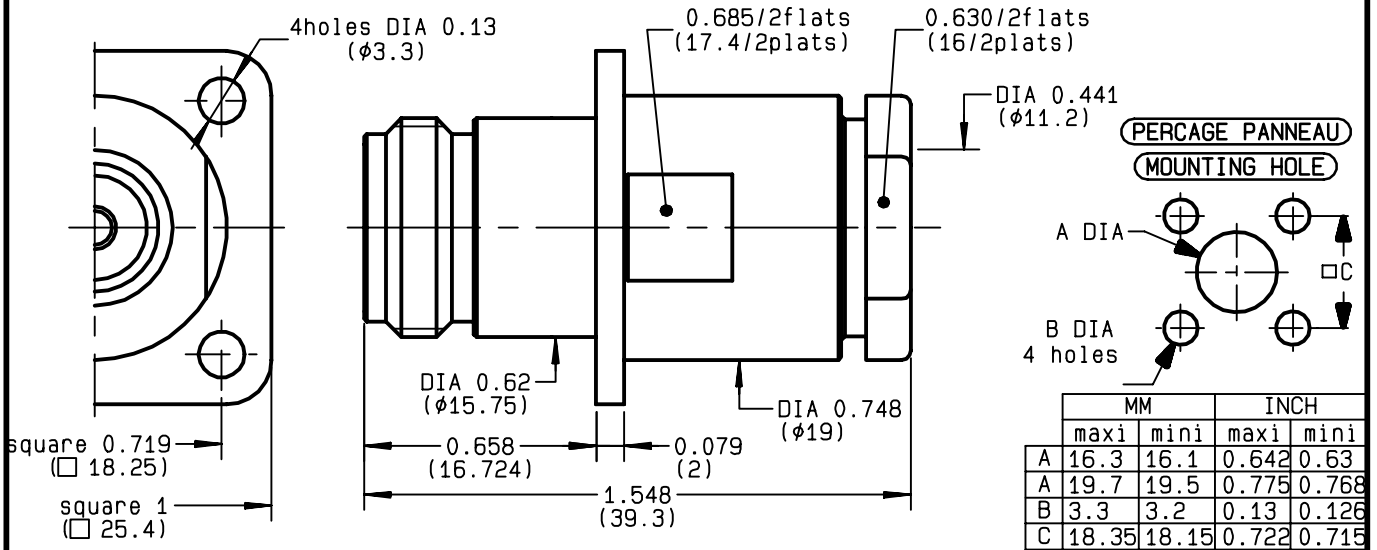


**STRAIGHT SQUARE FLANGE JACK  
CLAMP TYPE - CABLE 10+11/50 S+D**

**R161.272.000**  
**SERIES N**



|                                 |                                  |
|---------------------------------|----------------------------------|
| NOMINAL IMPEDANCE               | <b>50</b> Ω                      |
| FREQUENCY RANGE                 | <b>0-11</b> GHz                  |
| TEMPERATURE RATING              | <b>-55/+155</b> °C               |
| V.S.W.R                         | <b>1.30</b> + x F(GHz)Maxi       |
| RF INSERTION LOSS               | <b>0.048</b> √F(GHz) dB Maxi     |
| VOLTAGE RATING                  | <b>1400</b> Veff Maxi            |
| DIELECTRIC WITHSTANDING VOLTAGE | <b>2500</b> Veff Mini            |
| INSULATION RESISTANCE           | <b>5000</b> MΩMini               |
| HERMETIC SEAL                   | <b>NA</b> Atm.cm <sup>3</sup> /s |
| LEAKAGE (pressurized only)      | <b>NA</b>                        |
| MECHANICAL DURABILITY           | <b>500</b> Cycles                |
| WEIGHT                          | <b>52.8</b> gr                   |
| SPECIFICATION                   |                                  |

- CABLES : **KX 4**  
**KX 8**  
**RG 11**  
**RG 144**  
**RG 165**  
**RG 213**  
**RG 214**  
**RG 216**  
**RG 225**  
**RG 393**

OTHERS CHARACTERISTICS

|                            |            |           |
|----------------------------|------------|-----------|
| CABLE RETENTION            | <b>300</b> | N Mini    |
| CENTER CONTACT RETENTION   |            |           |
| Axial force - mating end   | <b>68</b>  | N Mini    |
| Axial force - opposite end | <b>68</b>  | N Mini    |
| Torque                     | <b>NA</b>  | cm.N Mini |
| RECOMMENDED TORQUES        |            |           |
| Mating                     | <b>NA</b>  | cm.N      |
| Panel nut                  | <b>NA</b>  | cm.N      |
| Clamp nut                  | <b>800</b> | cm.N      |

| CONNECTOR PARTS | MATERIALS        | FINISH                 | (all values are given in micrometers) |
|-----------------|------------------|------------------------|---------------------------------------|
| BODY            | BRASS            | BBR 2                  |                                       |
| OUTER CONTACT   | BRASS            | BBR 2                  |                                       |
| CENTER CONTACT  | BERYLLIUM COPPER | GOLD 0.5 OVER NICKEL 2 |                                       |
| INSULATOR       | PTFE             | -                      |                                       |
| GASKET          |                  | -                      |                                       |
| OTHERS PIECES   | BRASS            | BBR 2                  |                                       |

BONMINI

|                         |                                    |                  |
|-------------------------|------------------------------------|------------------|
| ISSUE<br><b>9736U01</b> | CREATION DATE<br><b>02/12/1992</b> | FILE PART-NUMBER |
|-------------------------|------------------------------------|------------------|



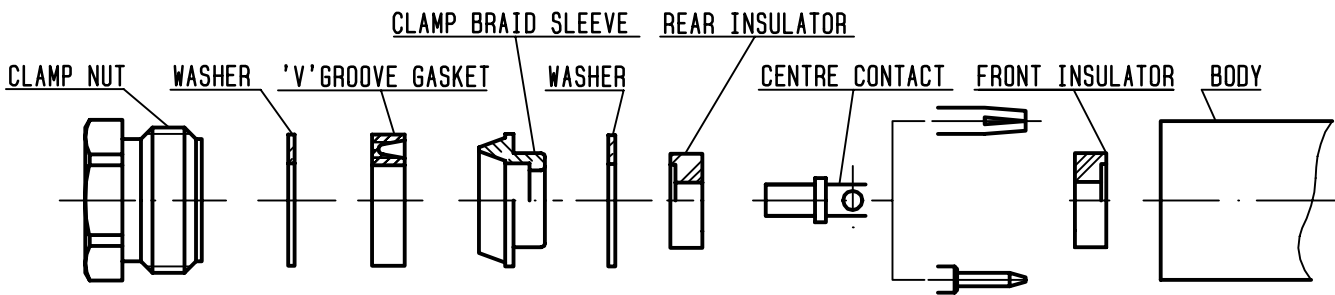
The information given here is subject to change without notice.  
Design changes may be in order to improve the product .

Connect to the future

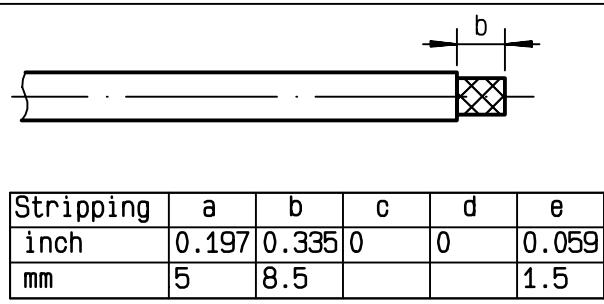


**R161.272.000**

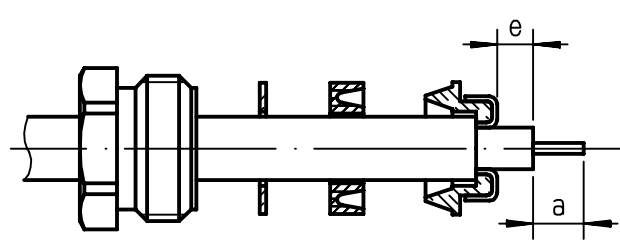
ISSUE 9736U01 SERIES N



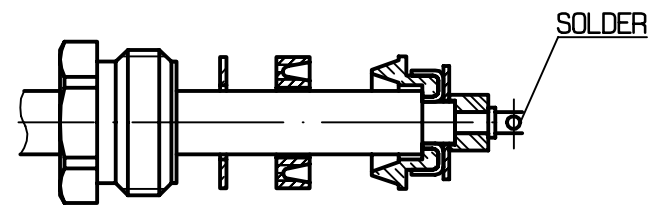
① Strip the cable .  
-  
-  
-  
-



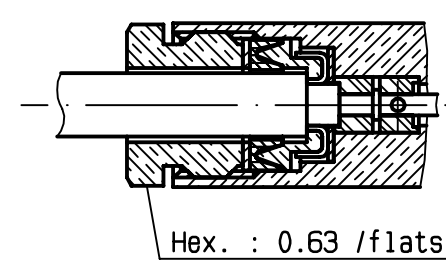
② Slide the clamp nut , the washer and the 'V'groove gasket onto the cable .  
Slide clamp braid sleeve over braid .  
Fold back braid and trim off surplus braid .  
Trim back dielectric as shown .



③ Mount washer and rear insulator .  
Solder the cable inner conductor into centre contact .  
-  
-  
-



④ Mount front insulator .  
Screw sub-assembly into the connector body .  
( recommended coupling torque 70.87 in.lb )  
-



BONOMINI