

A

B

C

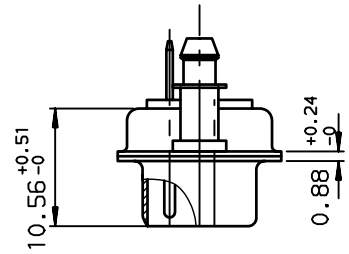
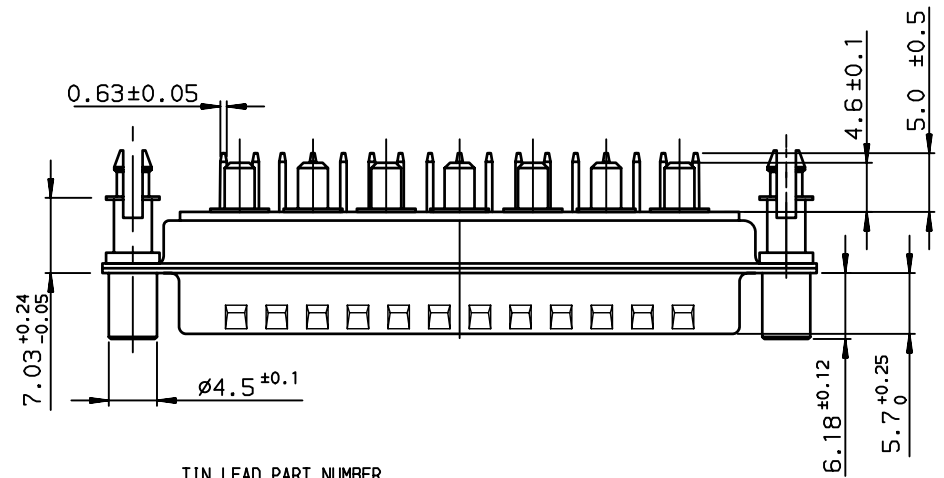
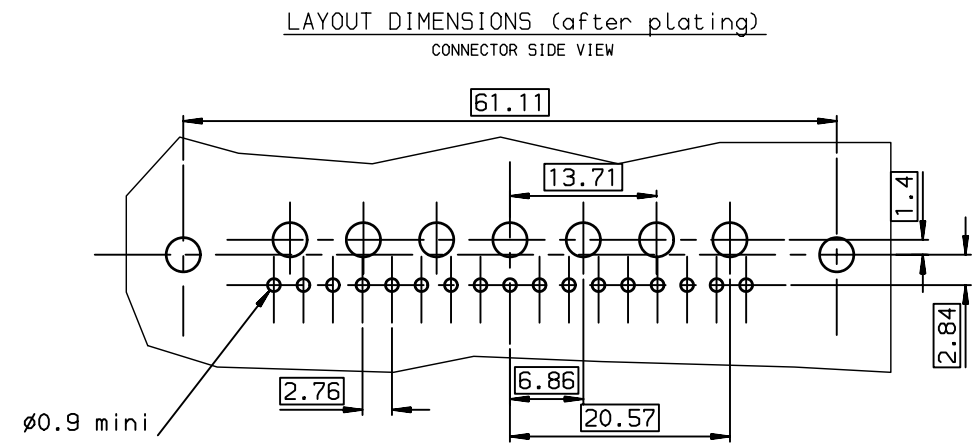
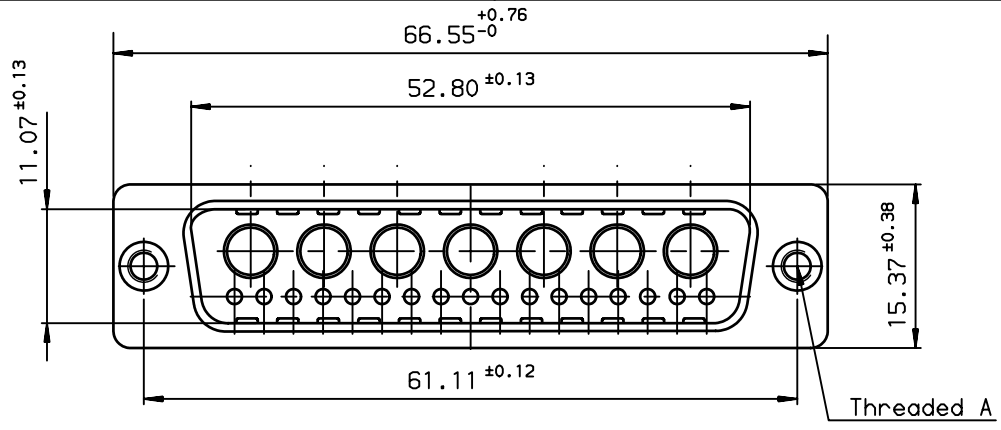
D

A

B

C

D



TIN LEAD PART NUMBER

DDI24W7P300H40	M3
DDV24W7P300H40	UNC 4.40
PART NUMBER	Threaded A

LEAD FREE PART NUMBER

DDI24W7P300H40LF	M3
DDV24W7P300H40LF	UNC 4.40
PART NUMBER	Threaded A

rev	ecn no	dr	date
B	-	DEB	2003/10/01
C	LS05-001	MPE	2005/03/09
D	LS06-0095	LGO	2006/06/28
-	-	-	-
-	-	-	-
-	-	-	-
-	-	-	-

GENERAL CHARACTERISTICS AND ROHS INFORMATIONS:
SEE DRAWING C01-8639-0000

European Views

www.fciconnect.com		surface ISO 1302 ✓	tolerance std ISO 406 ISO 1101	projection mm
TOLERANCES UNLESS OTHERWISE SPECIFIED				mm
Dr	JARRY	2001/01/26	0.X ±0.1	size A3
Eng	PESSON	2001/01/26	0.XX ±0.1	Scale 2
Chr	LEGARE	2001/01/26	0.XX' ±2'	ECN LS06-0095
Appr	LEGARE	2001/01/26	0.XXX ±0.1	Spec ref -
Product family			D-SUB	
		PIN CONNECTOR WITH STRAIGHT DIP SOLDER PINS		title C01-8639-1860 dwg no
catalog no		-		Rev. D
CUSTOMER			sheet 1 of 1	



Copyright FCI.