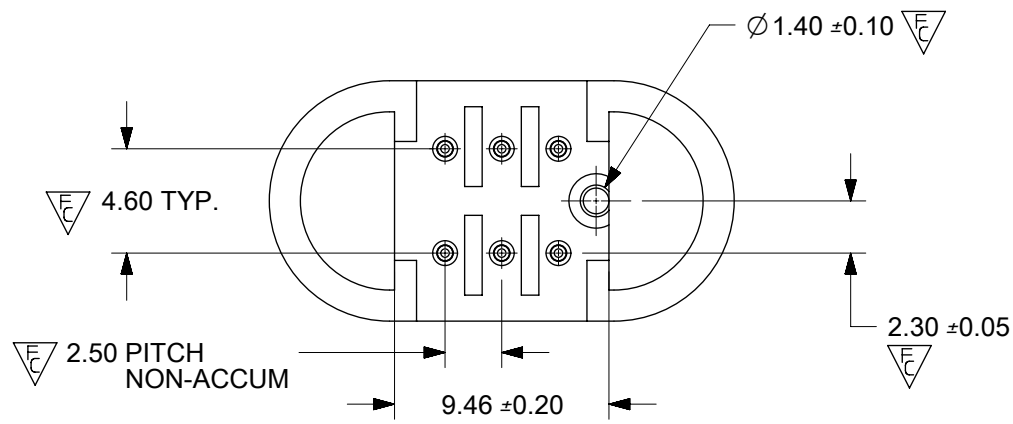
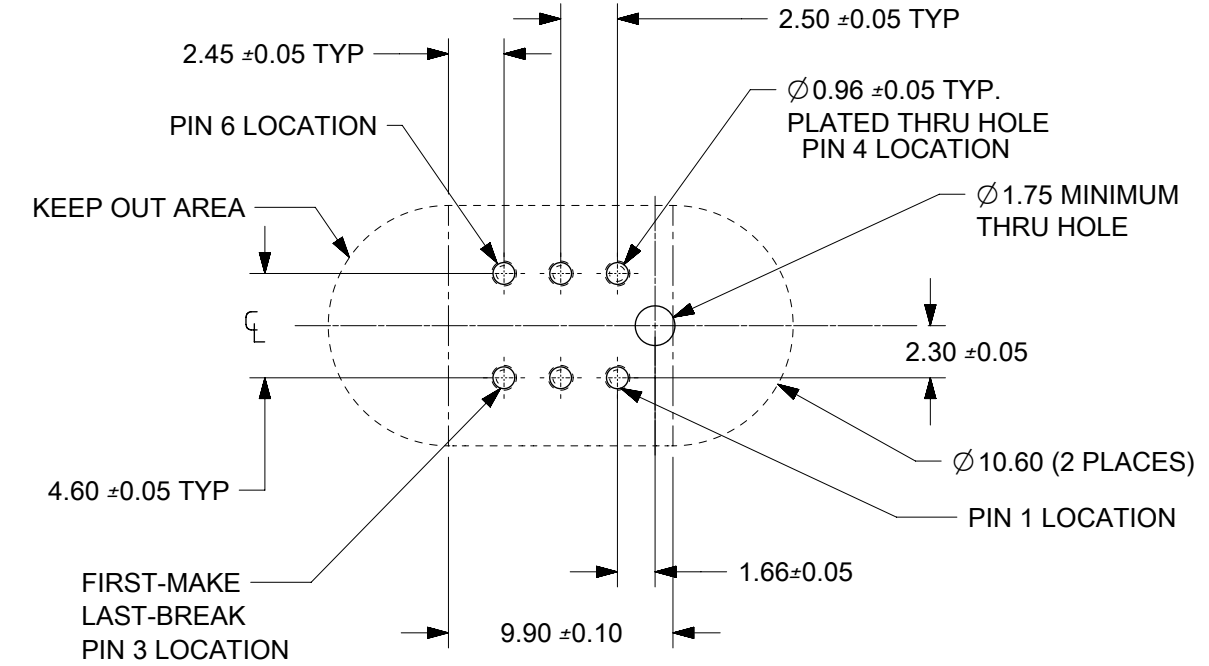


SECTION A-A



- NOTES:
- HOUSING MATERIAL: LCP, 94 V-0, BLACK
PIN MATERIAL: 0.7mm ROUND BRASS
PIN PLATING: 2.5µm (100µin) TIN OVER
1.25µm (50µin) NICKEL.
 - PART MATES WITH MOLEX RECEPTACLE SERIES 45579.
 - PACKAGING SPECIFICATION: 500PCS. IN 96707-0012 SHIPPING CARTON, PADDED WITH PINK FOAM ON TOP AND BOTTOM.



PCB LAYOUT: COMPONENT SIDE
PCB THICKNESS: 1.8mm (.071 in)

PART NUMBER	DIM. A	DIM. B	PACKAGING TYPE
45578-0001	4.97	2.57	BULK
45578-0002	5.37	2.76	BULK

THIS DRAWING CONTAINS INFORMATION THAT IS PROPRIETARY TO MOLEX ELECTRONIC TECHNOLOGIES, LLC AND SHOULD NOT BE USED WITHOUT WRITTEN PERMISSION

DIMENSION UNITS MM	SCALE 3:1	CURRENT REV DESC:		molex		
GENERAL TOLERANCES (UNLESS SPECIFIED)		EC NO: 625546				
4 PLACES ±		DRWN: CMN	2017/06/13	PRODUCT CUSTOMER DRAWING		
3 PLACES ±		CHK'D: ISHWARG	2019/10/18	DOCUMENT NUMBER		
2 PLACES ± 0.25		APPR: ISHWARG	2019/10/18	SD-45578-001		
1 PLACE ± 0.3		INITIAL REVISION:		DOC TYPE	DOC PART	REVISION
0 PLACES ±		DRWN: MCARRANZ	2003/05/22	PSD	001	C
ANGULAR TOL ± 0.5°		APPR: JCOMERCI	2003/05/22	SERIES		
DRAFT WHERE APPLICABLE MUST REMAIN WITHIN DIMENSIONS	THIRD ANGLE PROJECTION	DRAWING	SERIES	MATERIAL NUMBER	CUSTOMER	SHEET NUMBER
		B-SIZE	45578	SEE CHART	GENERAL MARKET	1 OF 1