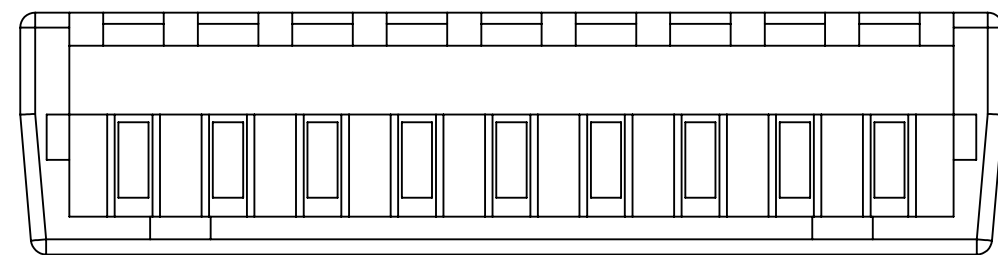
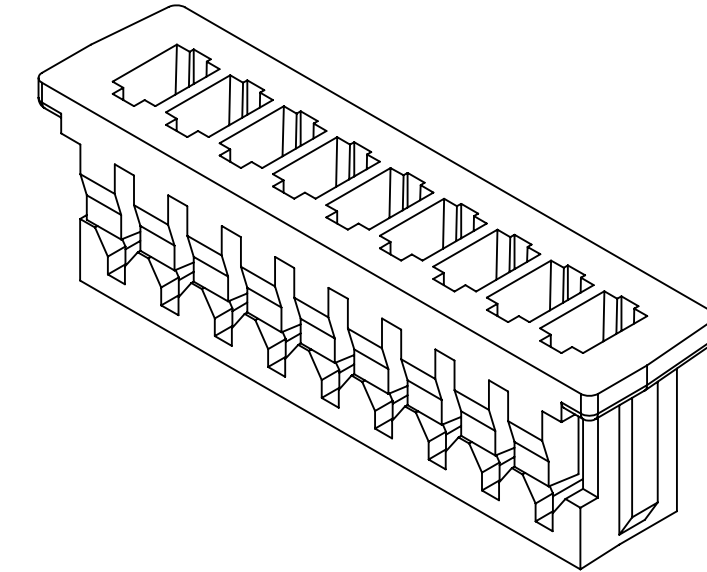
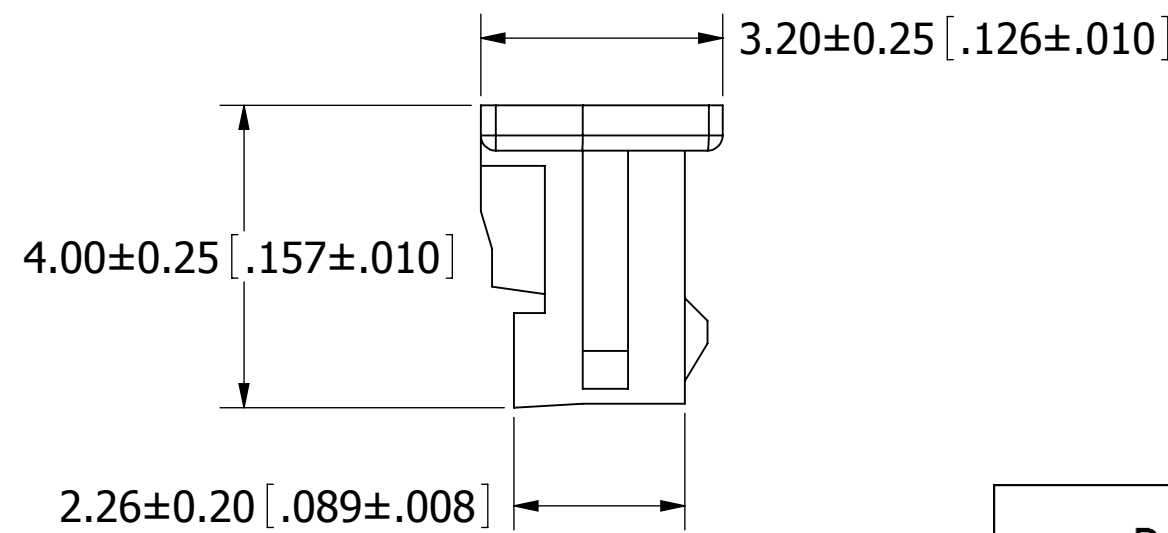
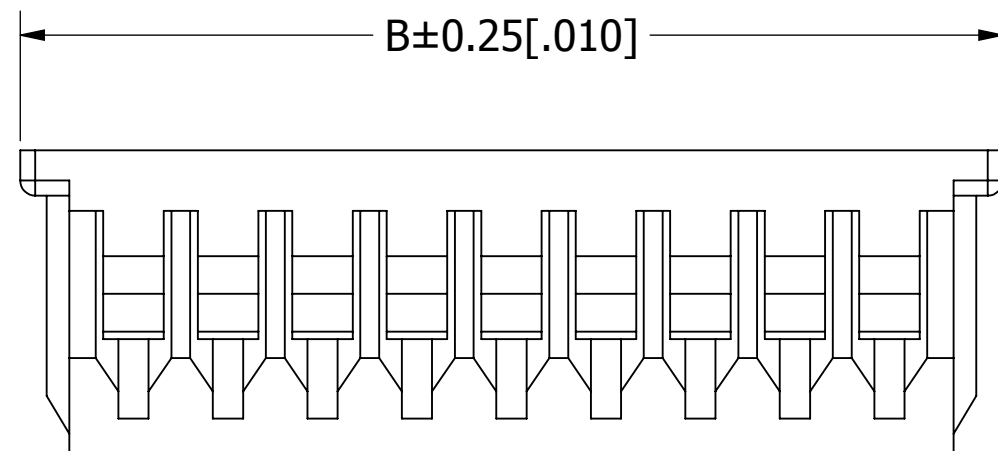
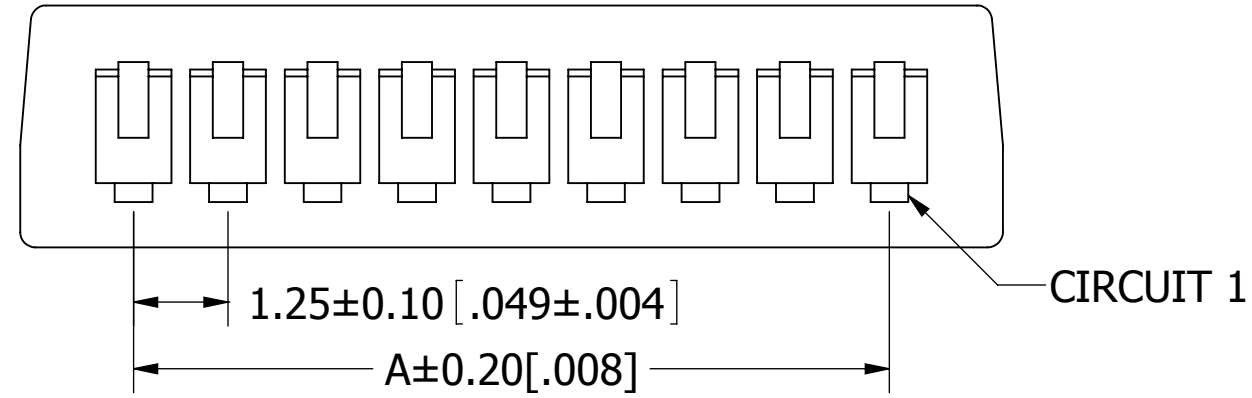


PART NUMBER CODING

SWH120-PULG-S__-UU-WH

NUMBER OF POSITIONS
(CONTACTS PER ROW)

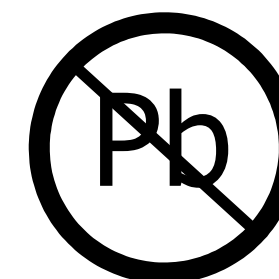
REVISIONS				
REV.	ECO. NO	DESCRIPTION	DATE	BY
A	2002	INITIAL RELEASE	7/17/2009	JH



Part Number	Positions/ Contacts	A		B	
		MM	INCH	MM	INCH
SWH120-PULG-S02-UU-WH	02/02	1.25	0.049	4.25	0.167
SWH120-PULG-S03-UU-WH	03/03	2.50	0.098	5.50	0.217
SWH120-PULG-S04-UU-WH	04/04	3.75	0.148	6.75	0.266
SWH120-PULG-S05-UU-WH	05/05	5.00	0.197	8.00	0.315
SWH120-PULG-S06-UU-WH	06/06	6.25	0.246	9.25	0.364
SWH120-PULG-S07-UU-WH	07/07	7.50	0.295	10.50	0.413
SWH120-PULG-S08-UU-WH	08/08	8.75	0.344	11.75	0.463
SWH120-PULG-S09-UU-WH	09/09	10.00	0.394	13.00	0.512
SWH120-PULG-S10-UU-WH	10/10	11.25	0.443	14.25	0.561
SWH120-PULG-S11-UU-WH	11/11	12.50	0.492	15.50	0.610
SWH120-PULG-S12-UU-WH	12/12	13.75	0.541	16.75	0.659
SWH120-PULG-S13-UU-WH	13/13	15.00	0.591	18.00	0.709
SWH120-PULG-S14-UU-WH	14/14	16.25	0.640	19.25	0.758
SWH120-PULG-S15-UU-WH	15/15	17.50	0.689	20.50	0.807

NOTES:

1. INSULATOR MATERIAL: PBT, UL94V-0, COLOR:WHITE.
2. CURRENT RATING: 1 AMP.
3. VOLTAGE RATING: 125V AC/DC.
4. INSULATOR RESISTANCE: 100 MEGOHMS MIN.
5. CONTACT RESISTANCE: 20 MILLIOHMS MAX.
6. DIELECTRIC WITHSTANDING VOLTAGE: 500V AC.
7. OPERATING TEMPERATURE: -25° C TO +85° C.
8. SUITABLE FOR SWT120 SERIES TERMINAL.
9. MATES WITH SWR120 SERIES WAFER.



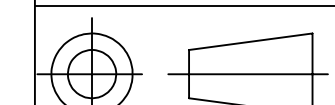
RoHS COMPLIANT

UNLESS OTHERWISE SPECIFIED:
DIMENSIONS ARE IN MM(INCHES)

TOLERANCES:
ANGULAR: ± 5°
.X = ± .3 [0.1]
.XX = ± .15 [0.06]
.XXX = ± .050 [0.0020]
SURFACE FINISH: 63 R_a
REMOVE ALL BURRS AND SHARP EDGES .010 MAX

INTERPRET DIMENSIONS AND GEOMETRIC
TOLERANCING
PER: ANSI Y14.5M-1994

DRAWN	DATE	NAME
JH	7/28/2009	JH



SULLINS CONNECTOR SOLUTIONS	
DESCRIPTION	HOUSING, 1.25mm CC, 1 ROW
PART NUMBER	SWH120-PULG-S__-UU-WH
SIZE	DWG. NO. 11291
SCALE: 10:1	REV A
SHEET 1 OF 1	