



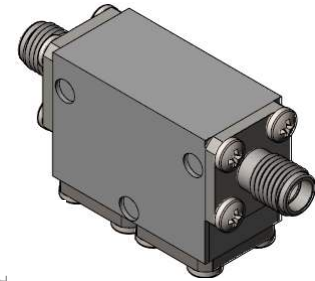
## Part Number: D4I1840

### Electrical Specifications

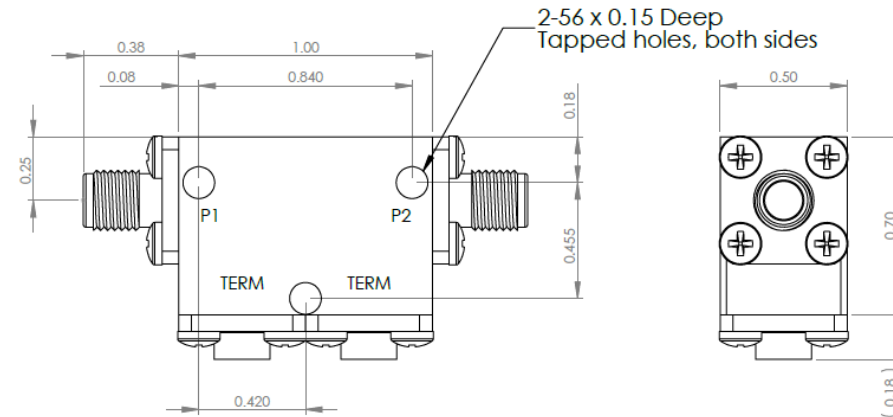
|                        |                |
|------------------------|----------------|
| Frequency Range (GHz): | 18.0 - 40.0    |
| Isolation (dB):        | 18 MIN         |
| Insertion Loss (dB):   | 4.2 MAX        |
| VSWR:                  | 2.1:1 MIN      |
| Forward Power (W):     | 5 AVG<br>30 PK |
| Reflective Power (W):  | 2 AVG          |

### Mechanical/Environmental Specifications

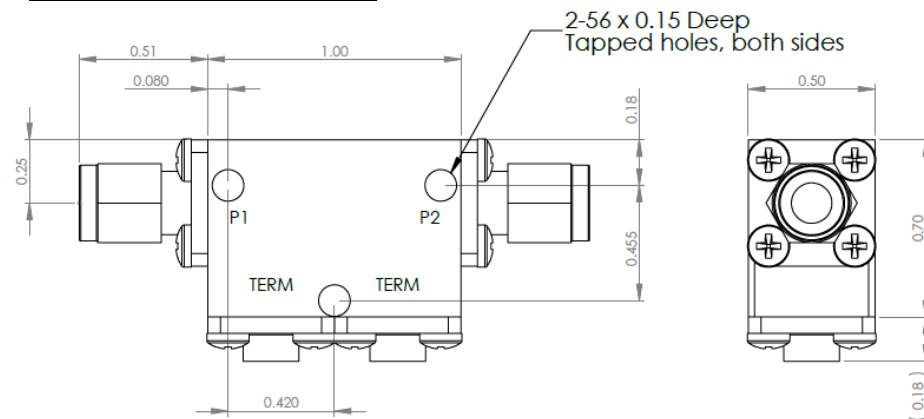
|                   |                            |
|-------------------|----------------------------|
| Connector Type:   | K (2.92mm)                 |
| Connector Body:   | Passivated stainless steel |
| Connector Pin:    | Gold plated copper         |
| Load Body:        | Brass                      |
| Magnetic Shunt:   | Nickel plated CRS          |
| Operational Temp: | -20°C to +65°C             |
| Weight (oz)       | 2.0 MAX                    |



### D4I1840 Dimensions



### D4I1840-3 Dimensions



Dimensions are in inches  
Tolerance

XX ±0.03  
XXX ±0.010

| Type of Device  | PN Suffix | Connector Configuration<br>Input / Output | PN Example |
|---|-----------|---|------------|
| Single and Dual Junction<br>Isolator, 2-Port Device<br>Input / Output | N/A       | Female / Female                           | D4I1840    |
|   | -1        | Male / Female                             | D4I1840-1  |
|   | -2        | Female / Male                             | D4I1840-2  |
|   | -3        | Male / Male                               | D4I1840-3  |



# MEASURED DATA

Part Number: D4I1840, +25°C

