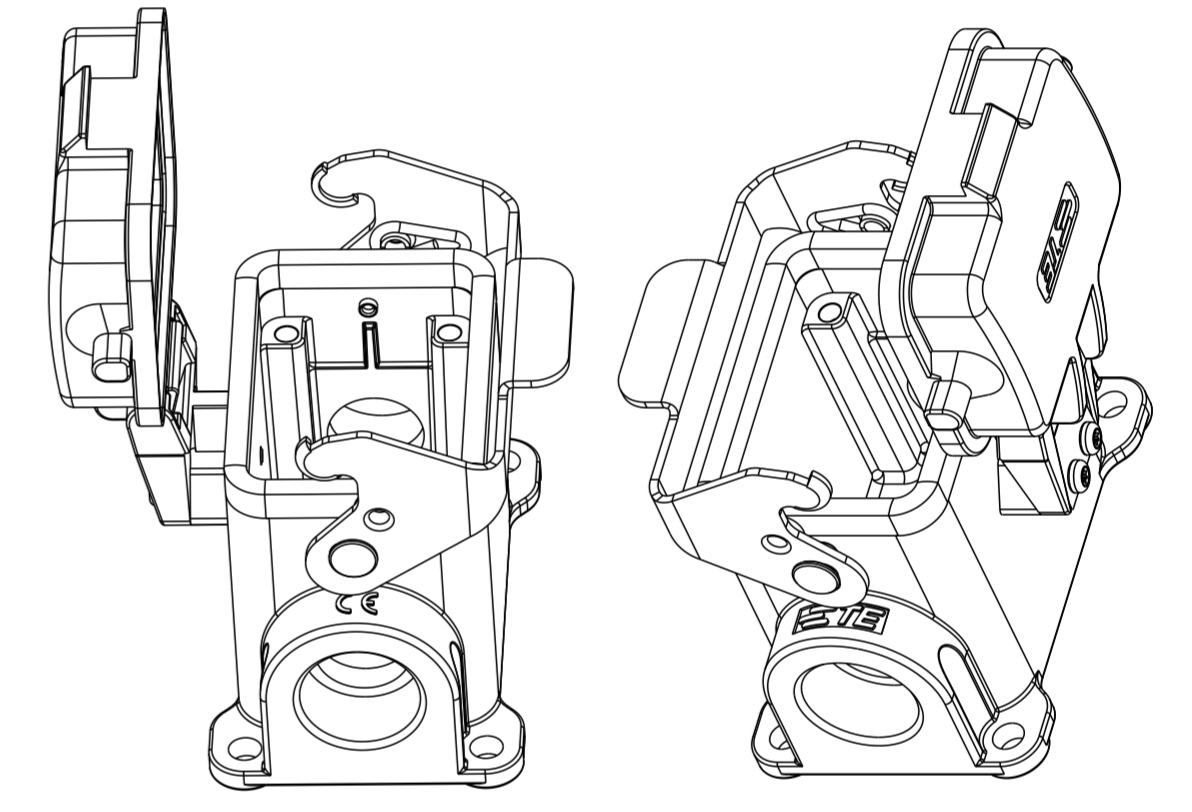
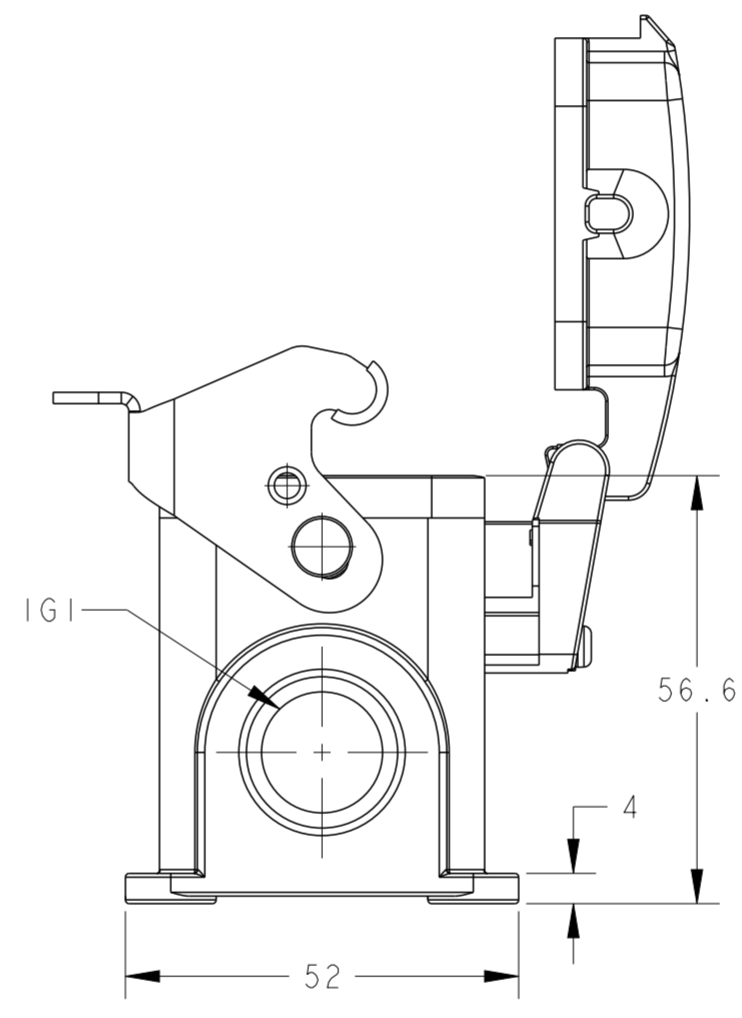
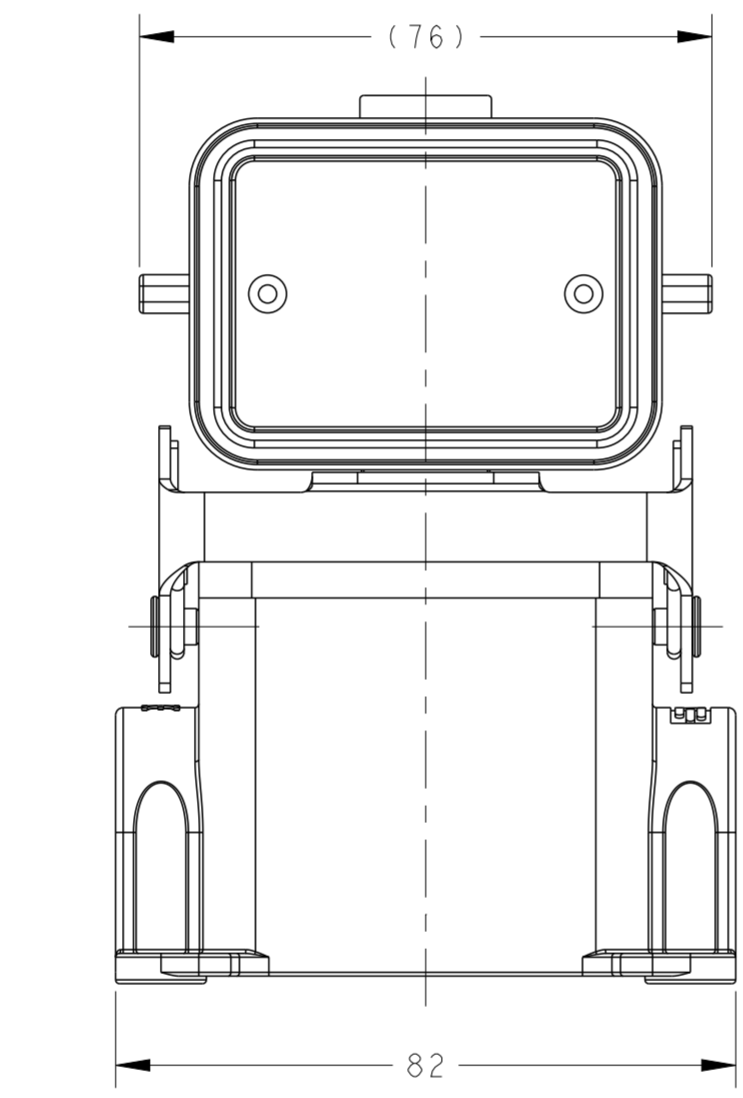
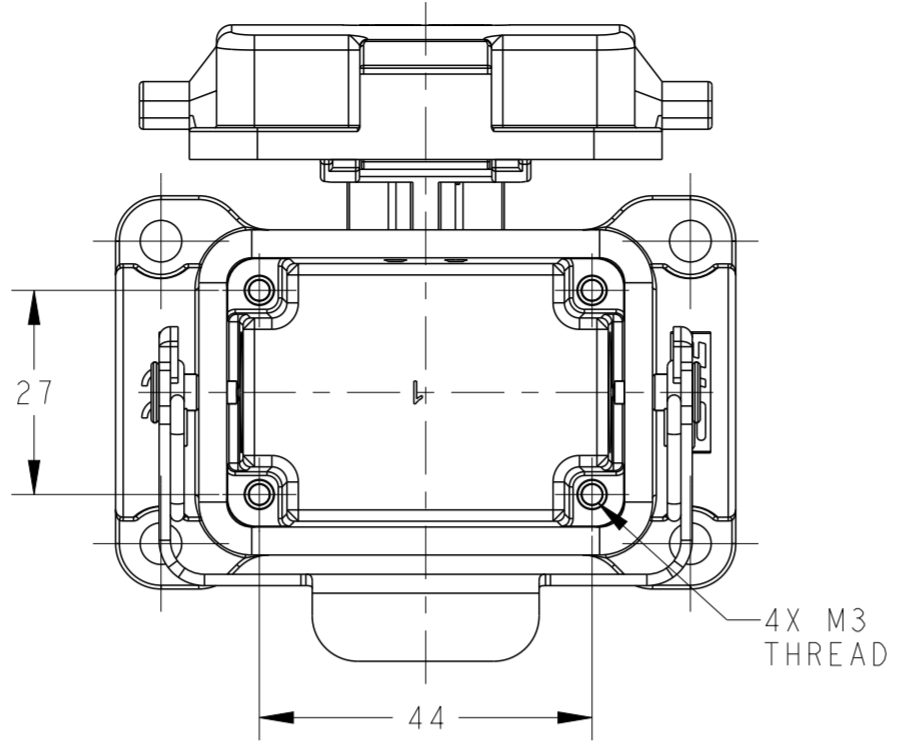


THIS DRAWING IS UNPUBLISHED. RELEASED FOR PUBLICATION 20
 © COPYRIGHT 20 BY - ALL RIGHTS RESERVED.

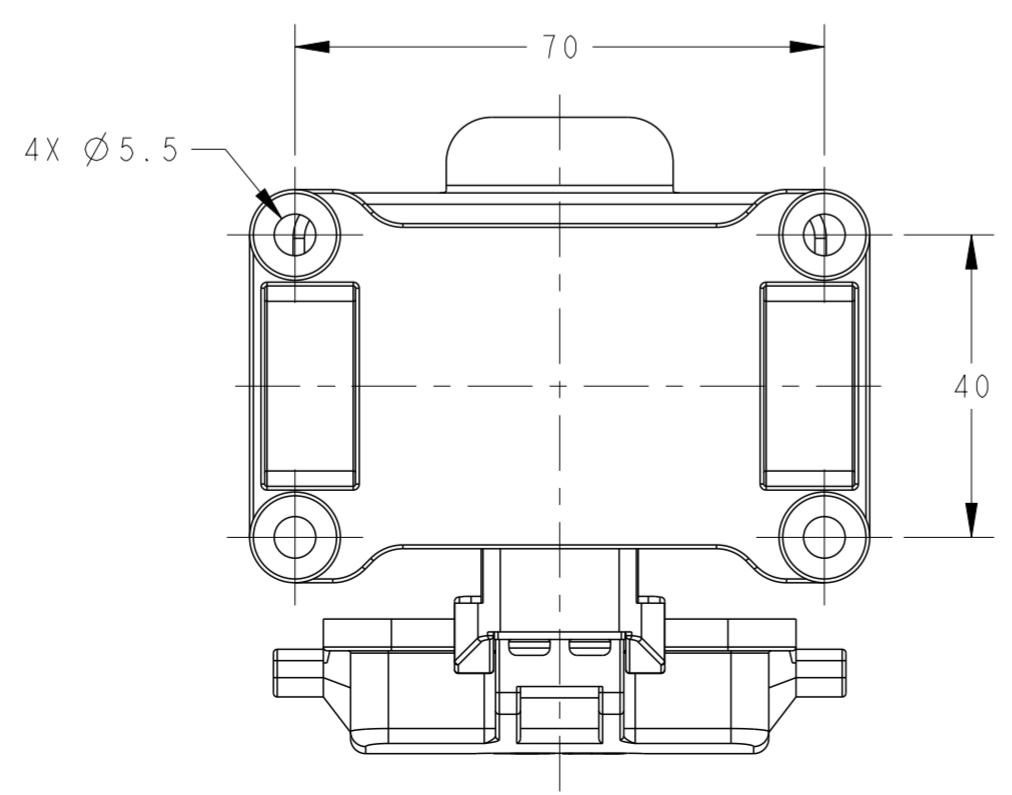
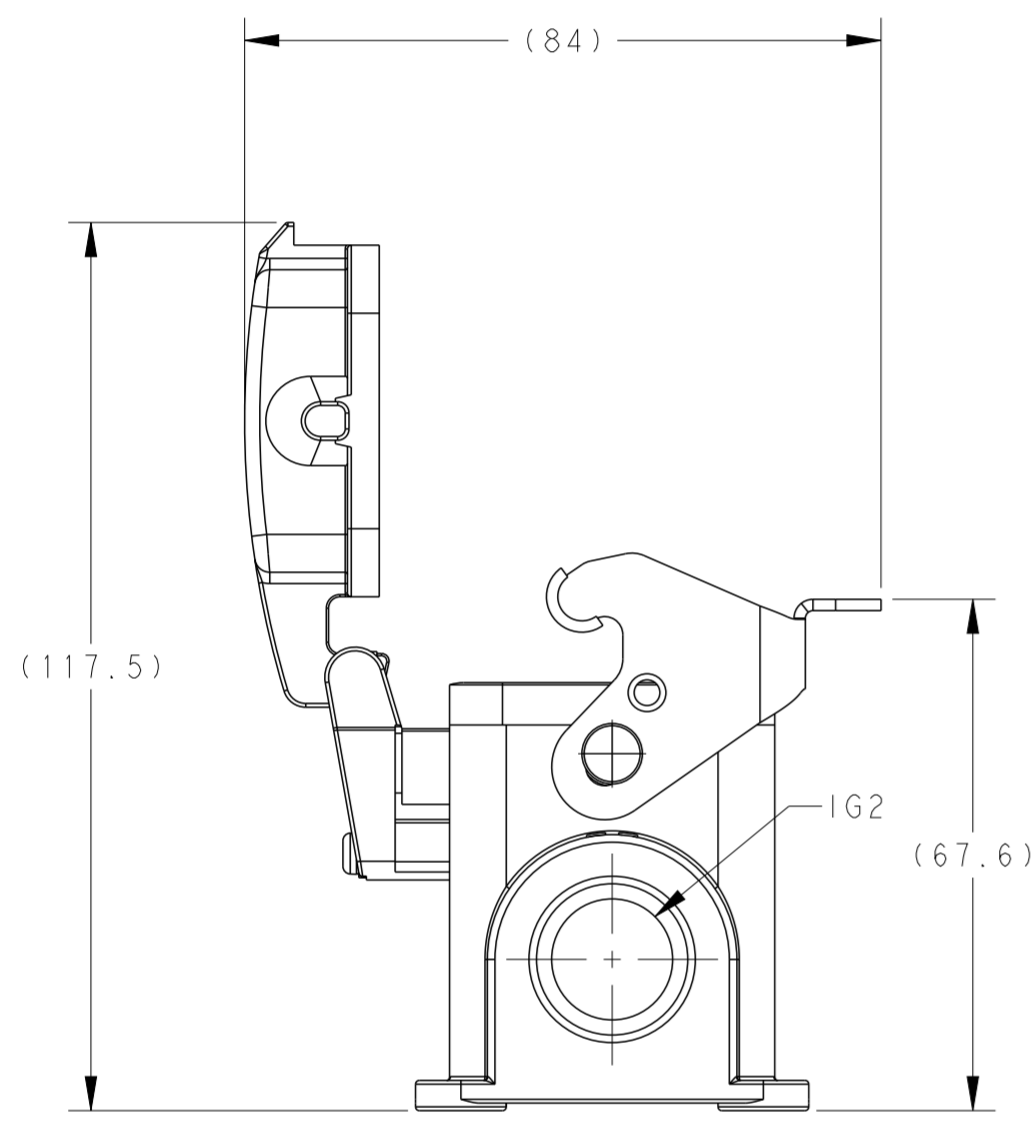
| REVISIONS | | | | |
|-----------|-----|---------------|-----------|--------|
| P | LTR | DESCRIPTION | DATE | APVD |
| A | | INITIAL | 23JUN2015 | DW CW |
| A1 | | ECR-16-007065 | 16MAY2016 | CH CW |
| B | | ECR-20-007968 | 15JUN2020 | WOR CW |

NOTES:
 1. TECHNICAL CHARACTERISTICS:
 HOUSING MATERIAL: DIE CAST ALUMINIUM ALLOY
 SURFACE: POWDER COATED, GREY
 DEGREE OF PROTECTION: IP65 (MATED)

注释:
 1. 技术参数:
 下壳材料: 铝合金
 表面处理: 粉末涂层, 灰色
 防护等级: IP65 (配合)



SCALE 4:5



| | | | |
|-----------------|-------------------|--------|------|
| T1620063116-001 | H6B-SDR-PG16 | - | PG16 |
| T1620063105-000 | H6B-SDR-G1/2 | G1/2 | - |
| T1620063113-000 | H6B-SDR-PG13.5 | PG13.5 | - |
| T1620063116-000 | H6B-SDR-PG16 | PG16 | - |
| T1620063120-000 | H6B-SDR-M20 | M20 | - |
| T1620063121-000 | H6B-SDR-PG21 | PG21 | - |
| T1620063125-000 | H6B-SDR-M25 | M25 | - |
| T1620061621-000 | H6B-SDR-PG16/PG21 | PG16 | PG21 |
| T1620061625-000 | H6B-SDR-PG16/M25 | PG16 | M25 |
| T1620063216-000 | H6B-SDR-2PG16 | PG16 | PG16 |
| T1620063220-000 | H6B-SDR-2M20 | M20 | M20 |
| T1620063225-000 | H6B-SDR-2M25 | M25 | M25 |
| PART NUMBER | PART DESCRIPTION | IG1 | IG2 |
| 零件料号 | 零件描述 | 螺纹孔1 | 螺纹孔2 |

THIS DRAWING IS A CONTROLLED DOCUMENT.

DWN: DAVID.WANG 23JUN2015
 CHK: CHRIS.WANG 23JUN2015
 APVD: XIANG.XU 23JUN2015

PRODUCT SPEC: 108-137013
 APPLICATION SPEC: 114-137013

MATERIAL: -
 FINISH: -

Customer Drawing

SCALE: 1:1

SHEET 1 OF 1

REV B

NAME: H6B-SDR-M/PG

RESTRICTED TO: -