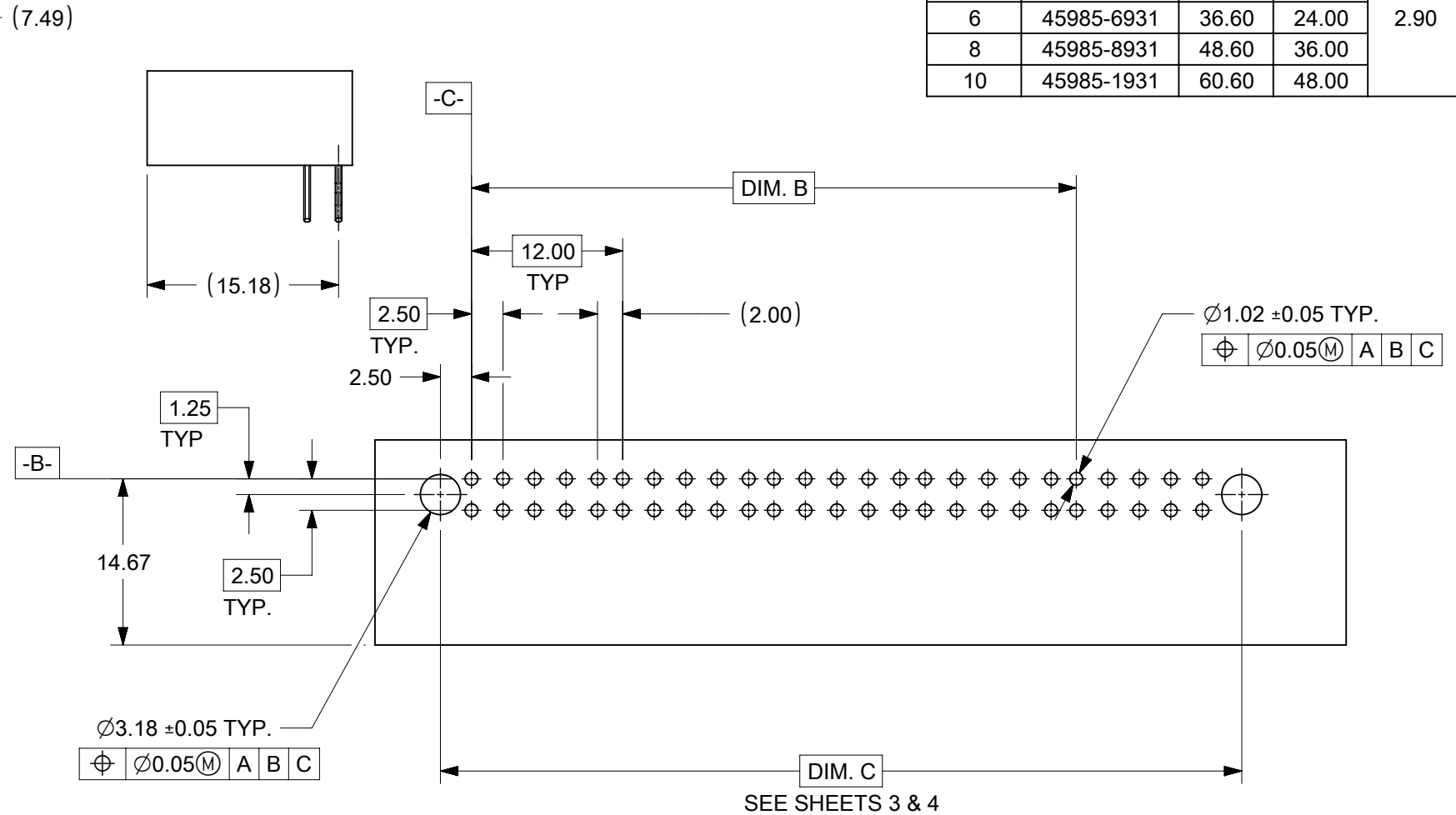
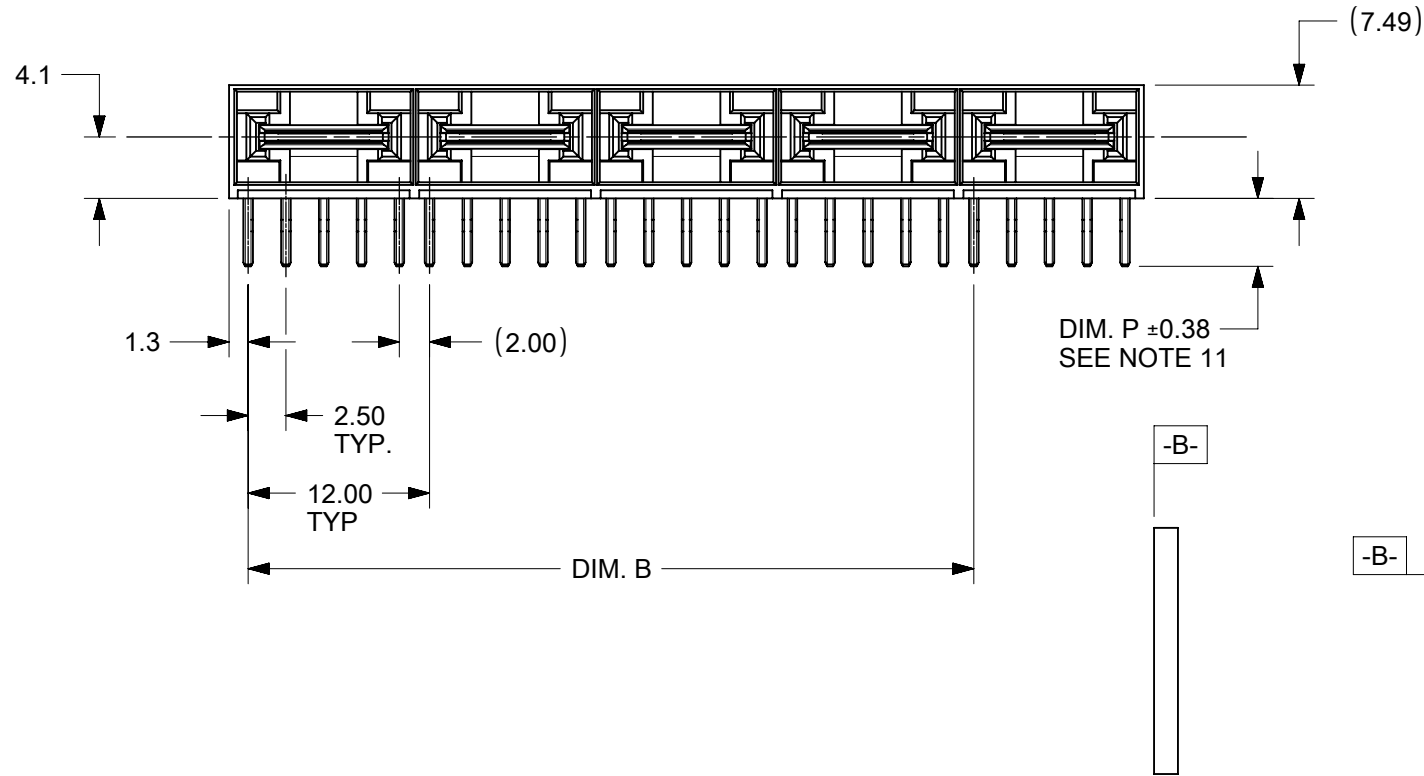


SEE NOTE 10



CKT SIZE	MATERIAL NUMBER	DIM. A REF	DIM B	DIM P
2	45985-2911	12.77	-	4.50
4	45985-4911	24.60	12.00	
6	45985-6911	36.60	24.00	
8	45985-8911	48.60	36.00	
10	45985-1911	60.60	48.00	3.60
2	45985-2921	12.77	-	
4	45985-4921	24.60	12.00	
6	45985-6921	36.60	24.00	
8	45985-8921	48.60	36.00	2.90
10	45985-1921	60.60	48.00	
2	45985-2931	12.77	-	
4	45985-4931	24.60	12.00	
6	45985-6931	36.60	24.00	2.90
8	45985-8931	48.60	36.00	
10	45985-1931	60.60	48.00	

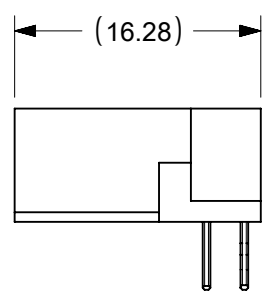
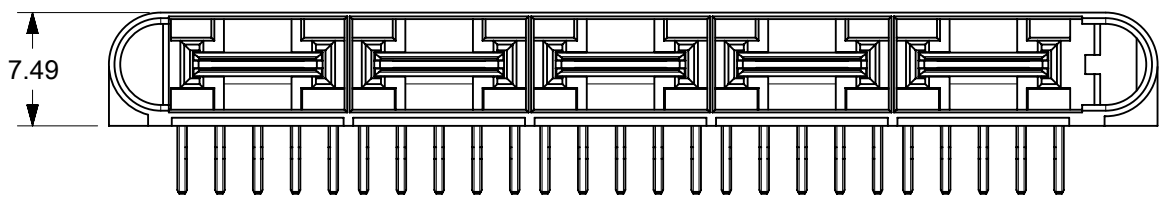
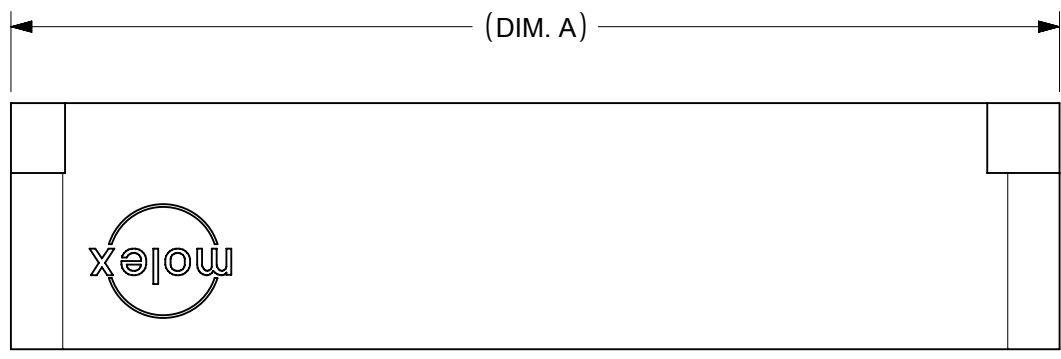
- NOTES:
- MATERIAL:  
HOUSING: GLASS FILLED LCP (LIQUID CRYSTAL POLYMER); UL94V-0; COLOR: BLACK  
TERMINAL: COPPER ALLOY
  - FINISH: SELECT GOLD: 0.76 MICROMETER/30 MICROINCH MINIMUM, IN CONTACT AREA,  
SELECT TIN: 3.81 MICROMETER/150 MICROINCH MINIMUM, IN PC TAIL AREA  
BOTH OVER NICKEL: 1.27 MICROMETER/50 MICROINCH MINIMUM.
  - PRODUCT SPECIFICATION: PS-45984-001
  - PACKAGING SPECIFICATION: TRAY PER PK-45984-001
  - SEE SHEET 5 FOR CIRCUIT IDENTIFICATION.
  - PARTS ARE RoHS COMPLIANT.
  - PEG HOLES ARE OPTIONAL. SEE SHEET 3 & 4.
  - MATES WITH MOLEX R/A RECEPTACLE SERIES 45984 OR VERTICAL RECEPTACLE SERIES 46112
  - PARTS CONFORM TO CLASS B REQUIREMENTS OF COSMETIC SPECIFICATION PS-45499-002.
  - DATE CODE (3-DIGIT DAY, 1-DIGIT YEAR) TO BE LOCATED AND PRINTED AS SHOWN.
  - DIM. P TO BE MEASURED FROM THE HOUSING STAND-OFF TO THE TERMINAL TIP.

PCB LAYOUT: COMPONENT SIDE  
THICKNESS: SEE CHART

THIS DRAWING CONTAINS INFORMATION THAT IS PROPRIETARY TO MOLEX ELECTRONIC TECHNOLOGIES, LLC AND SHOULD NOT BE USED WITHOUT WRITTEN PERMISSION

DIMENSION UNITS	SCALE	CURRENT REV DESC: ADDED 2 CKT		<b>molex</b>		
mm	2:1					
GENERAL TOLERANCES (UNLESS SPECIFIED)				LPH PLUG ASSEMBLY RIGHT ANGLE POWER CONNECTOR		
	MM	INCH		PRODUCT CUSTOMER DRAWING		
4 PLACES	±	±		DOCUMENT NUMBER		
3 PLACES	±	±		SD-45985-102		
2 PLACES	± 0.25	±		DOC TYPE	DOC PART	REVISION
1 PLACE	±	±		PSD	001	D2
0 PLACES	±	±		SHEET NUMBER		
ANGULAR TOL	± 0.5°			1 OF 5		
DRAFT WHERE APPLICABLE MUST REMAIN WITHIN DIMENSIONS	THIRD ANGLE PROJECTION	DRAWING	SERIES	MATERIAL NUMBER	CUSTOMER	
		B-SIZE	45985	SEE TABLE	GENERAL MARKET	

EC NO: 646837  
DRWN: GSHARMA 2020/08/27  
CHK'D: GSHARMA 2020/10/09  
APPR: HTHYAGARAJ 2021/05/24  
INITIAL REVISION:  
DRWN: BANDURA 2006/05/16  
APPR: PATEL

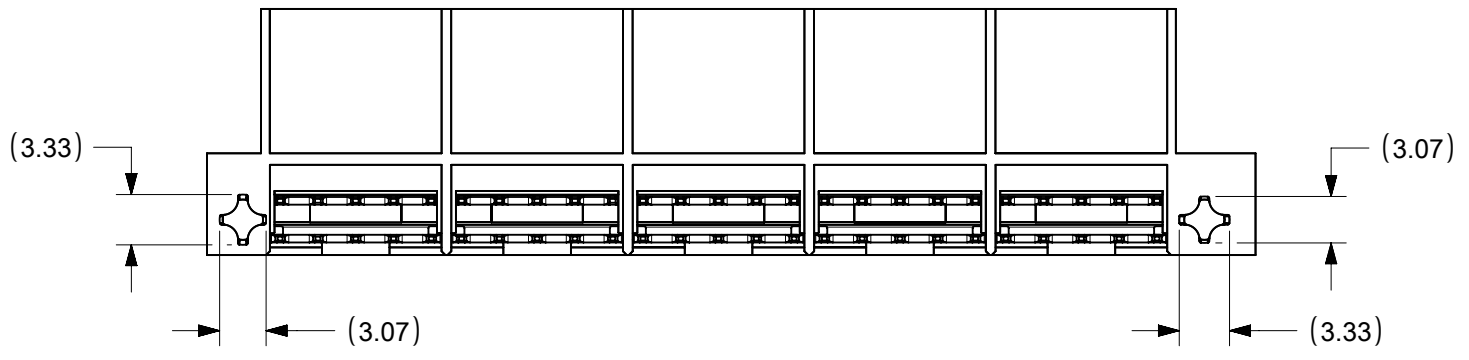
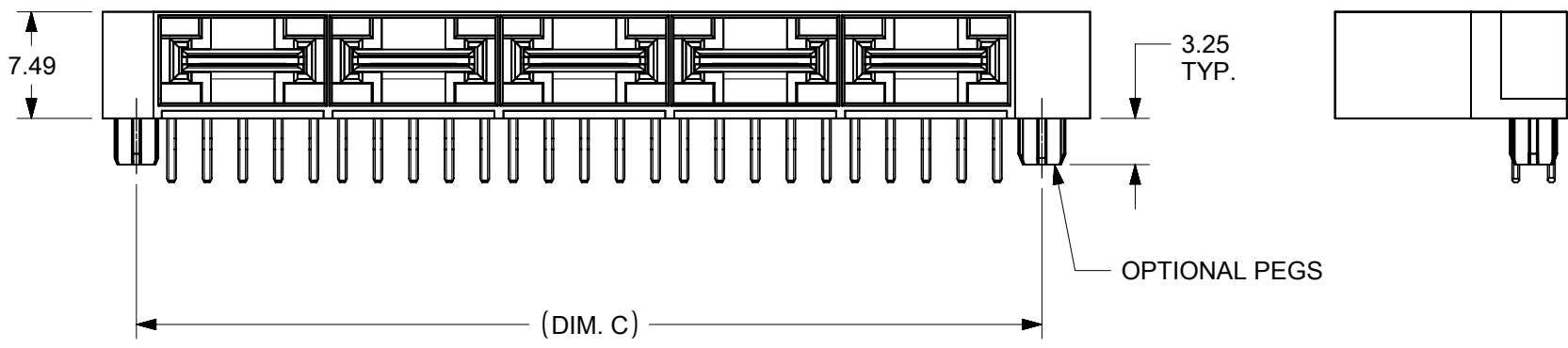
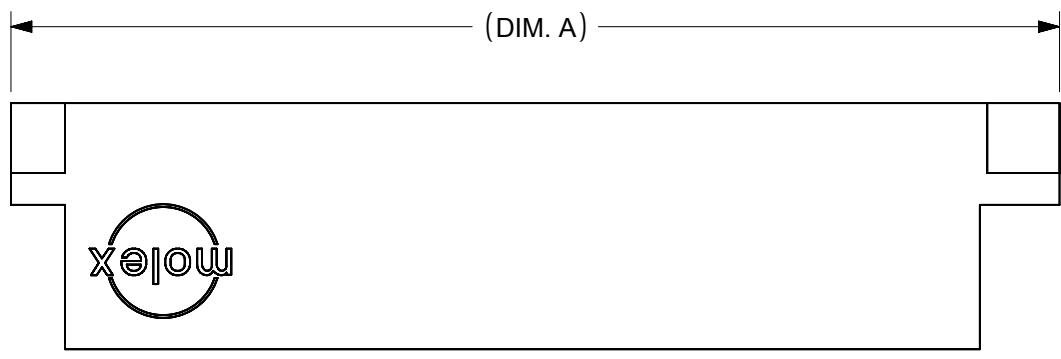


CKT SIZE	MATERIAL NUMBER	DIM. A REF	DIM B	DIM P
2	45985-2912	21.57	-	4.50
4	45985-4912	33.36	12.00	
6	45985-6912	45.36	24.00	
8	45985-8912	57.36	36.00	
10	45985-1912	69.36	48.00	3.60
2	45985-2922	21.57	-	
4	45985-4922	33.36	12.00	
6	45985-6922	45.36	24.00	
8	45985-8922	57.36	36.00	2.90
10	45985-1922	69.36	48.00	
2	45985-2932	21.57	-	
4	45985-4932	33.36	12.00	
6	45985-6932	45.36	24.00	2.90
8	45985-8932	57.36	36.00	
10	45985-1932	69.36	48.00	

NOTE:  
1. SEE SHEET 1 FOR DIMENSIONS NOT SHOWN.

THIS DRAWING CONTAINS INFORMATION THAT IS PROPRIETARY TO MOLEX ELECTRONIC TECHNOLOGIES, LLC AND SHOULD NOT BE USED WITHOUT WRITTEN PERMISSION									
DIMENSION UNITS <b>mm</b>		SCALE <b>2:1</b>		CURRENT REV DESC: ADDED 2 CKT			<b>molex</b>		
GENERAL TOLERANCES (UNLESS SPECIFIED)				EC NO: 646837					
		MM	INCH	DRWN: GSHARMA 2020/08/27			PRODUCT CUSTOMER DRAWING		
4 PLACES		±	±	CHK'D: GSHARMA 2020/10/09			DOCUMENT NUMBER		
3 PLACES		±	±	APPR: HTHYAGARAJ 2021/05/24			SD-45985-102		
2 PLACES		± 0.25	±	INITIAL REVISION:			DOC TYPE   DOC PART   REVISION		
1 PLACE		±	±	DRWN: BANDURA 2006/05/16			PSD   001   D2		
0 PLACES		±	±	APPR: PATEL			MATERIAL NUMBER   CUSTOMER		
ANGULAR TOL		± 0.5°		THIRD ANGLE PROJECTION		DRAWING		SHEET NUMBER	
DRAFT WHERE APPLICABLE MUST REMAIN WITHIN DIMENSIONS				B-SIZE		SERIES 45985		SEE TABLE   GENERAL MARKET	

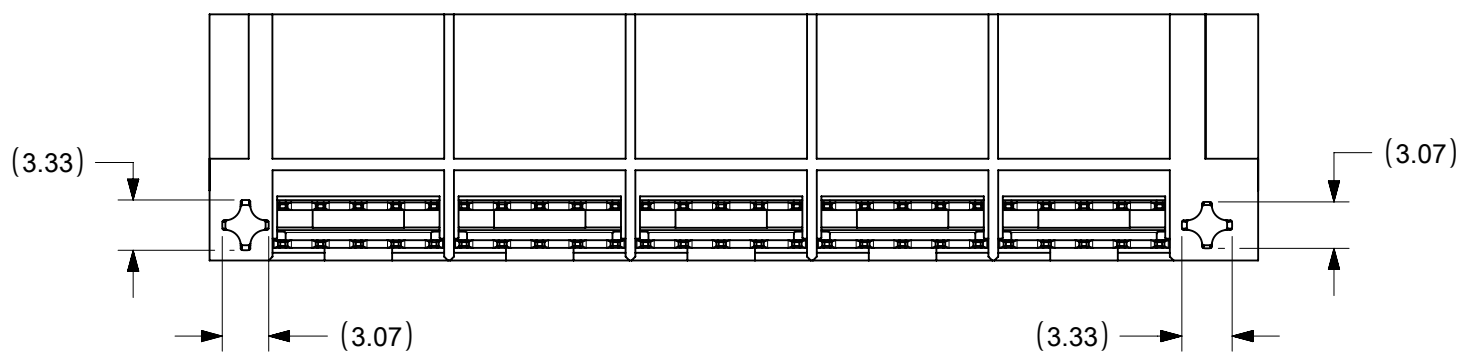
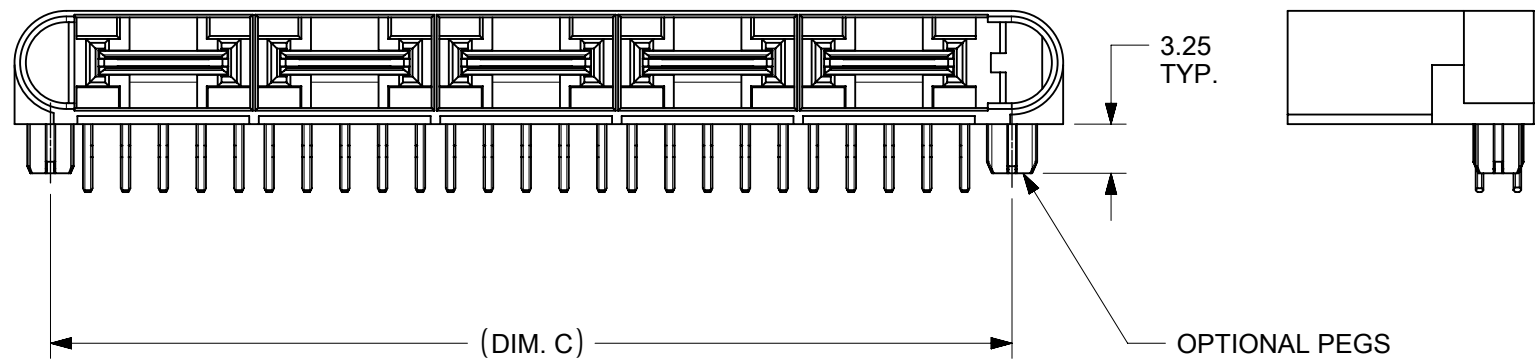
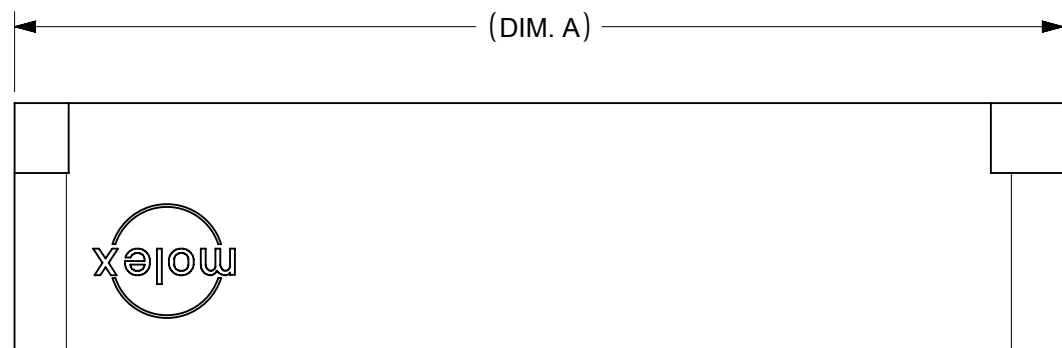
CKT SIZE	MATERIAL NUMBER	DIM. A REF	DIM B	DIM C	DIM P
2	45985-2913	21.57	-	15.60	4.50
4	45985-4913	33.36	12.00	27.60	
6	45985-6913	45.36	24.00	39.60	
8	45985-8913	57.36	36.00	51.60	
10	45985-1913	69.36	48.00	63.60	3.60
2	45985-2923	21.57	-	15.60	
4	45985-4923	33.36	12.00	27.60	
6	45985-6923	45.36	24.00	39.60	
8	45985-8923	57.36	36.00	51.60	2.90
10	45985-1923	69.36	48.00	63.60	
2	45985-2933	21.57	-	15.60	
4	45985-4933	33.36	12.00	27.60	
6	45985-6933	45.36	24.00	39.60	2.90
8	45985-8933	57.36	36.00	51.60	
10	45985-1933	69.36	48.00	63.60	



NOTE:  
1. SEE SHEET 1 FOR DIMENSIONS NOT SHOWN.

THIS DRAWING CONTAINS INFORMATION THAT IS PROPRIETARY TO MOLEX ELECTRONIC TECHNOLOGIES, LLC AND SHOULD NOT BE USED WITHOUT WRITTEN PERMISSION																					
DIMENSION UNITS		SCALE		CURRENT REV DESC: ADDED 2 CKT						<b>molex</b>											
mm		1:1		EC NO: 646837 DRWN: GSHARMA 2020/08/27 CHK'D: GSHARMA 2020/10/09 APPR: HTHYAGARAJ 2021/05/24 INITIAL REVISION: DRWN: BANDURA 2006/05/16 APPR: PATEL								DOCUMENT NUMBER		DOC TYPE	DOC PART	REVISION					
GENERAL TOLERANCES (UNLESS SPECIFIED)										PRODUCT CUSTOMER DRAWING						SD-45985-102		PSD	001	D2	
4 PLACES		±	±													MATERIAL NUMBER		CUSTOMER		SHEET NUMBER	
3 PLACES		±	±													SEE TABLE		GENERAL MARKET		3 OF 5	
2 PLACES		± 0.25	±																		
1 PLACE		±	±																		
0 PLACES		±	±																		
ANGULAR TOL ± 0.5°				THIRD ANGLE PROJECTION		DRAWING	SERIES														
DRAFT WHERE APPLICABLE MUST REMAIN WITHIN DIMENSIONS						B-SIZE	45985														

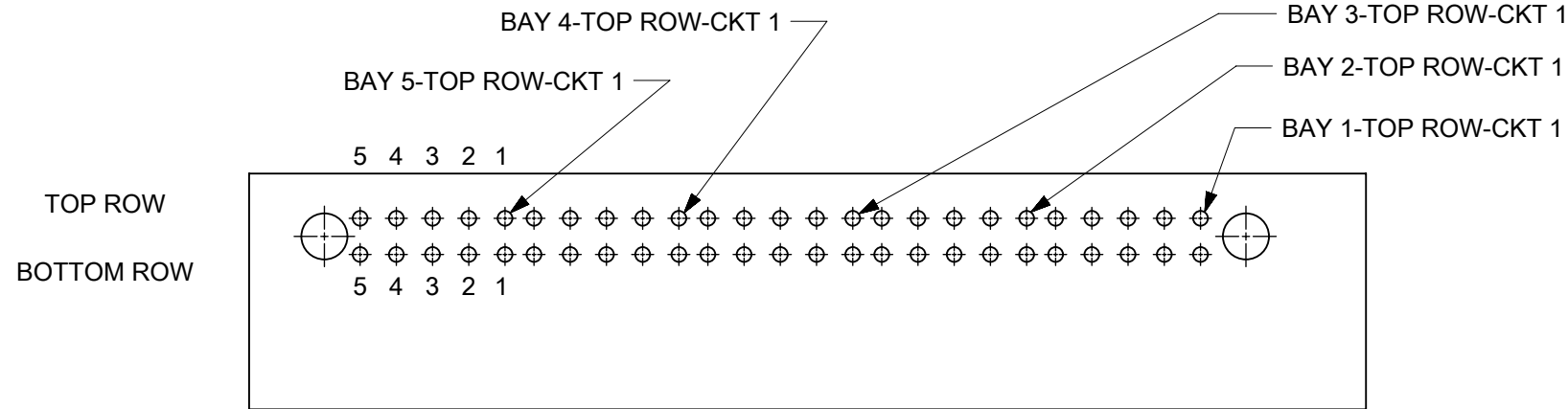
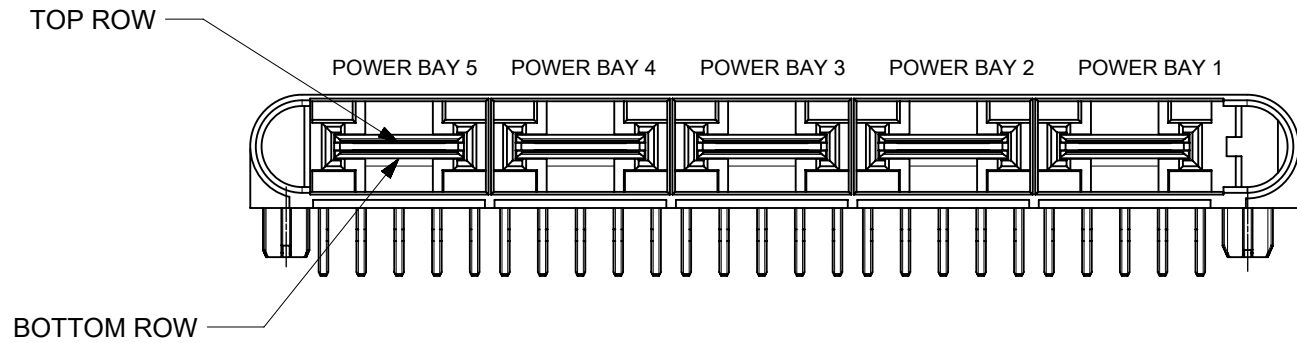
CKT SIZE	MATERIAL NUMBER	DIM. A REF	DIM B	DIM C	DIM P
2	45985-2914	21.57	-	15.60	4.50
4	45985-4914	33.36	12.00	27.60	
6	45985-6914	45.36	24.00	39.60	
8	45985-8914	57.36	36.00	51.60	
10	45985-1914	69.36	48.00	63.60	3.60
2	45985-2924	21.57	-	15.60	
4	45985-4924	33.36	12.00	27.60	
6	45985-6924	45.36	24.00	39.60	
8	45985-8924	57.36	36.00	51.60	2.90
10	45985-1924	69.36	48.00	63.60	
2	45985-2934	21.57	-	15.60	
4	45985-4934	33.36	12.00	27.60	
6	45985-6934	45.36	24.00	39.60	2.90
8	45985-8934	57.36	36.00	51.60	
10	45985-1934	69.36	48.00	63.60	



NOTE:  
1. SEE SHEET 1 FOR DIMENSIONS NOT SHOWN.

THIS DRAWING CONTAINS INFORMATION THAT IS PROPRIETARY TO MOLEX ELECTRONIC TECHNOLOGIES, LLC AND SHOULD NOT BE USED WITHOUT WRITTEN PERMISSION									
DIMENSION UNITS <b>mm</b>		SCALE <b>1:1</b>		CURRENT REV DESC: ADDED 2 CKT				<b>molex</b>	
GENERAL TOLERANCES (UNLESS SPECIFIED)				LPH PLUG ASSEMBLY RIGHT ANGLE POWER CONNECTOR					
		MM	INCH	EC NO: 646837				PRODUCT CUSTOMER DRAWING	
4 PLACES ±				DRWN: GSHARMA 2020/08/27				DOCUMENT NUMBER	
3 PLACES ±				CHK'D: GSHARMA 2020/10/09				SD-45985-102	
2 PLACES ± 0.25				APPR: HTHYAGARAJ 2021/05/24				PSD 001	
1 PLACE ±				INITIAL REVISION:				DOC PART	
0 PLACES ±				DRWN: BANDURA 2006/05/16				D2	
ANGULAR TOL ± 0.5°				APPR: PATEL				REVISION	
DRAFT WHERE APPLICABLE MUST REMAIN WITHIN DIMENSIONS		THIRD ANGLE PROJECTION		DRAWING	SERIES	MATERIAL NUMBER	CUSTOMER	SHEET NUMBER	
		B-SIZE		45985	SEE TABLE	GENERAL MARKET	4 OF 5		

# CIRCUIT IDENTIFICATION



PCB LAYOUT: COMPONENT SIDE

THIS DRAWING CONTAINS INFORMATION THAT IS PROPRIETARY TO MOLEX ELECTRONIC TECHNOLOGIES, LLC AND SHOULD NOT BE USED WITHOUT WRITTEN PERMISSION												
DIMENSION UNITS		SCALE		CURRENT REV DESC: ADDED 2 CKT								
mm		1:1										
GENERAL TOLERANCES (UNLESS SPECIFIED)				EC NO: 646837 DRWN: GSHARMA 2020/08/27 CHK'D: GSHARMA 2020/10/09 APPR: HTHYAGARAJ 2021/05/24 INITIAL REVISION: DRWN: BANDURA 2006/05/16 APPR: PATEL				LPH PLUG ASSEMBLY RIGHT ANGLE POWER CONNECTOR				
								PRODUCT CUSTOMER DRAWING				
								DOCUMENT NUMBER		DOC TYPE	DOC PART	REVISION
								SD-45985-102		PSD	001	D2
								MATERIAL NUMBER		CUSTOMER		SHEET NUMBER
DRAFT WHERE APPLICABLE MUST REMAIN WITHIN DIMENSIONS		THIRD ANGLE PROJECTION		DRAWING	SERIES	MATERIAL NUMBER	CUSTOMER		SHEET NUMBER			
				B-SIZE	45985	SEE TABLE	GENERAL MARKET		5 OF 5			

DOCUMENT STATUS	P1	RELEASE DATE	2021/05/24	08:17:39
-----------------	----	--------------	------------	----------