

AN–1694 LM20242 Evaluation Board

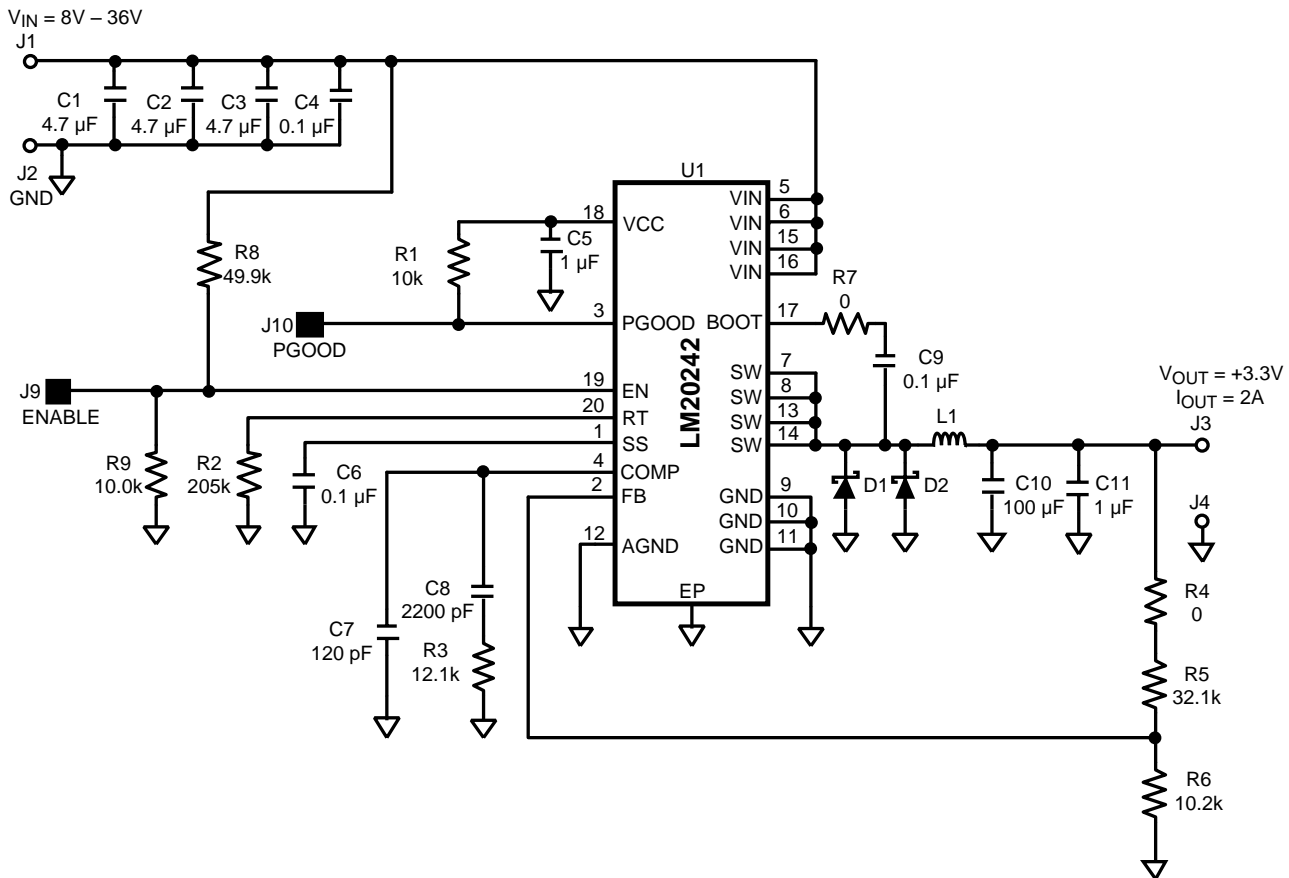
1 Introduction

The LM20242 synchronous rectifier Buck evaluation board is designed to provide the design engineer with a fully functional Buck power converter based on Current Mode Control to evaluate the LM20242 switching regulator IC. The evaluation board provides a 3.3 V output with 2A current capability. The input voltage ranges from 8 V to 36 V. The design operates at 300 kHz, a good compromise between conversion efficiency and solution size. The printed circuit board consists of 2 layers of 2 ounce copper on FR4 material with a thickness of 0.062 inches. This document contains the evaluation board schematic, Bill of Materials (BOM) and a quick setup procedure. For complete circuit design information, see the *LM20242 36V, 2A PowerWise™ Adjustable Frequency Synchronous Buck Regulator Data Sheet (SNVS534)*.

The performance of the synchronous rectifier buck evaluation board is as follows:

- Input Range: 8 V to 36 V
- Output Voltage: 3.3 V, $\pm 2\%$
- Output Current: 0 to 2A
- Frequency of Operation: 300 kHz
- Board Size: 2.15 X 2.0 X 0.6 inches
- Load Regulation: 0.1%
- Line Regulation: 0.1%
- Over Current Limiting

2 Evaluation Board Schematic



3 Powering and Loading Considerations

Read this entire page prior to attempting to power the evaluation board.

3.1 Quick Setup Procedure

1. Set the input source current limit to 1A. Turn off the input source. Connect the positive output of the input source to J1 and the negative output to J2.
2. Connect the load, with 2A capability, to J3 for the positive connection and J4 for the negative connection.
3. Leave the ENABLE pin, J9, open for normal operation.
4. Set the input source voltage to 12 V and the load to 0.1A. The load voltage should be in regulation with a nominal 3.3 V output.
5. Slowly increase the load while monitoring the load voltage at J3 and J4. It should remain in regulation with a nominal 3.3 V output as the load is increased up to 2 Amp.
6. Slowly sweep the input source voltage from 8 V to 36 V. The load voltage should remain in regulation with a nominal 3.3 V output.
7. Temporally short the ENABLE pin (J9) to GND (J2) to check the shutdown function.
8. Increase the load beyond the normal range to check current limiting while the input source is set to 12 V. The output current should limit at approximately 3.8A. The input source current limit should be increased for this step. Fan cooling is critical during this step.

3.2 Air Flow

Prolonged operation at full power and high ambient temperature will cause the thermal shutdown circuit within the regulator IC to activate. A fan with a minimum of 200 LFM should always be provided.

3.3 Powering Up

Using the ENABLE pin (J9) provided will allow powering up the input source with the current level set low. It is suggested that the load power be kept low during the first power up. Set the current limit of the input source to provide about 1.5 times the anticipated wattage of the load. As you remove the connection from the ENABLE pin to GND (J2), immediately check for 3.3 volts at the output.

A quick efficiency check is the best way to confirm that everything is operating properly. If something is amiss you can be reasonably sure that it will affect the efficiency adversely. Few parameters can be incorrect in a switching power supply without creating losses and potentially damaging heat.

3.4 Over Current Protection

The evaluation board is configured with cycle-by-cycle over-current protection. This function is completely contained in the LM20242. The peak current is limited to approximately 3.8A. The thermal stress on various circuit components is quite severe while in an overloaded condition, therefore limit the duration of the overload and provide sufficient cooling (airflow).

4 Performance Characteristics

Figure 1 shows the conversion efficiency versus output current for several input voltage conditions.

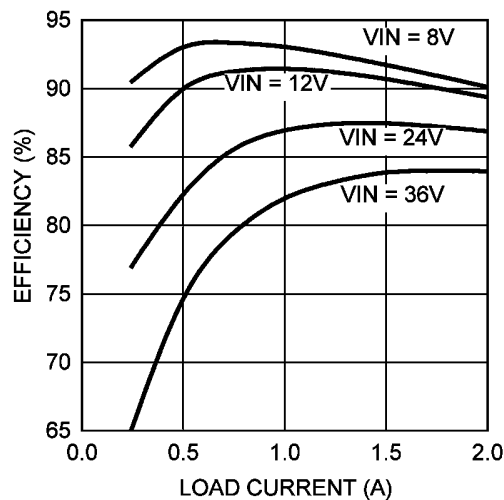
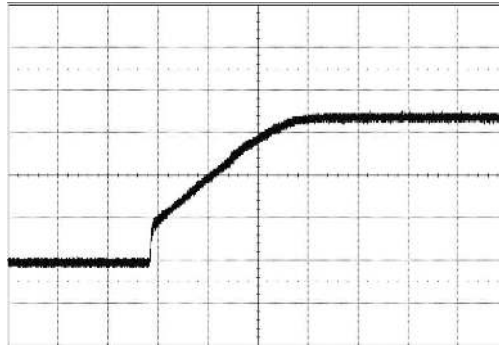


Figure 1. Efficiency Plots

TURN-ON WAVEFORM

When applying power to the LM20242 evaluation board a soft-start sequence occurs. [Figure 2](#) shows the output voltage during a typical start-up sequence.

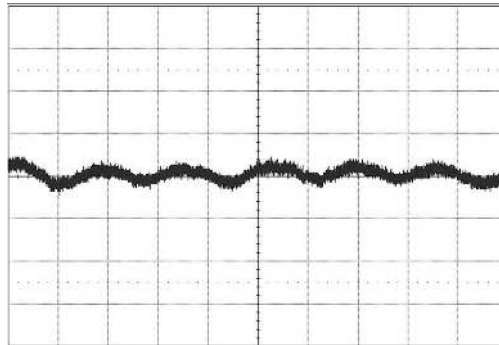


Conditions: Input Voltage = 12 VDC, Output Current = 2A
 Trace 1: Output Voltage Volts/div = 1 V
 Horizontal Resolution = 5ms/div

Figure 2. Output Voltage During a Typical Start-Up

OUTPUT RIPPLE WAVEFORM

[Figure 3](#) shows the output voltage ripple. This measurement was taken with the scope probe tip placed on the J3 load terminal and the scope probe ground "barrel" pushed against the J4 load terminal. The scope bandwidth is set to 20 MHz.

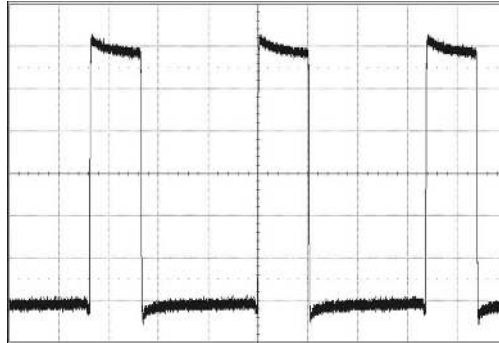


Conditions: Input Voltage = 12 VDC, Output Current = 2A,
 Bandwidth Limit = 20 MHz
 Trace 1: Output Ripple Voltage Volts/div = 20 mV
 Horizontal Resolution = 2 μ s/div

Figure 3. Output Voltage Ripple

PRIMARY SWITCHNODE WAVEFORM

Figure 4 shows the typical SW pin voltage during continuous conduction mode (CCM).



Conditions: Input Voltage = 12 VDC, Output Current = 2A,
Bandwidth Limit = 20 MHz
Trace 1: LM20242 SW Pin Volts/div = 2 V
Horizontal Resolution = 1 μ s/div

Figure 4. SW Pin Voltage During Continuous Conduction Mode (CCM)

5 Layout and Bill of Materials (BOM)

The Bill of Materials is shown in Table 1, including the manufacturer and part number.

Table 1. Bill of Materials

Designator	Qty	Part Number	Description	Value
C1-3	3	GRM32ER71H475KA88L	CAPACITOR, 1210 X7R CER, MURATA	4.7 μ , 50 V
C4	1	C2012X7R2A104K	CAPACITOR, 0805 X7R CER, TDK	0.1 μ , 100 V
C5	1	GRM188R71A105KA61D	CAPACITOR, 0603 X7R CER, MURATA	1 μ , 10 V
C6,9	2	C1608X7R1H104K	CAPACITOR, 0603 X7R CER, TDK	0.1 μ , 50 V
C7	1	C1608C0G1H121J	CAPACITOR, 0603 COG CER, TDK	120p, 50 V
C8	1	C1608C0G1H222J	CAPACITOR, 0603 COG CER, TDK	2200p, 50 V
C10	1	C1210C107M9PAC	CAPACITOR, 1210 X5R CER, KEMET	100 μ , 6.3 V
C11	1	GRM21BR71H105KA12L	CAPACITOR, 0805 X7R CER, MURATA	1 μ , 50 V
D1,2	2	MBR0540	DIODE, SCHOTTKY, SOD123, FAIRCHILD	500 mA, 40 V
L1	1	MSS1278-153ML	INDUCTOR, COILCRAFT 12 mm x 12 mm	15 μ H, 3.5A
R1,9	2	CRCW06031002F	RESISTOR, 0603, VISHAY	10k
R2	1	CRCW06032053F	RESISTOR, 0603, VISHAY	205k
R3	1	CRCW06031212F	RESISTOR, 0603, VISHAY	12.1k
R4,7	2	CRCW06030000Z0EA	RESISTOR, 0603, VISHAY	0
R5	1	CRCW06033212F	RESISTOR, 0603, VISHAY	32.1k
R6	1	CRCW06031022F	RESISTOR, 0603, VISHAY	10.2k
R8	1	CRCW06034992F	RESISTOR, 0603, VISHAY	49.9k
U1	1	LM20242	SWITCHING REGULATOR, TI	
J1,2,3,4	4	1503-2	0.112" TURRET TERMINAL, KEYSTONE	TERMINAL, TURRET
J9,10	2	5002	TERMINAL, SINGLE PIN, KEYSTONE	TESTPOINT, LOOP

6 PCB Layout

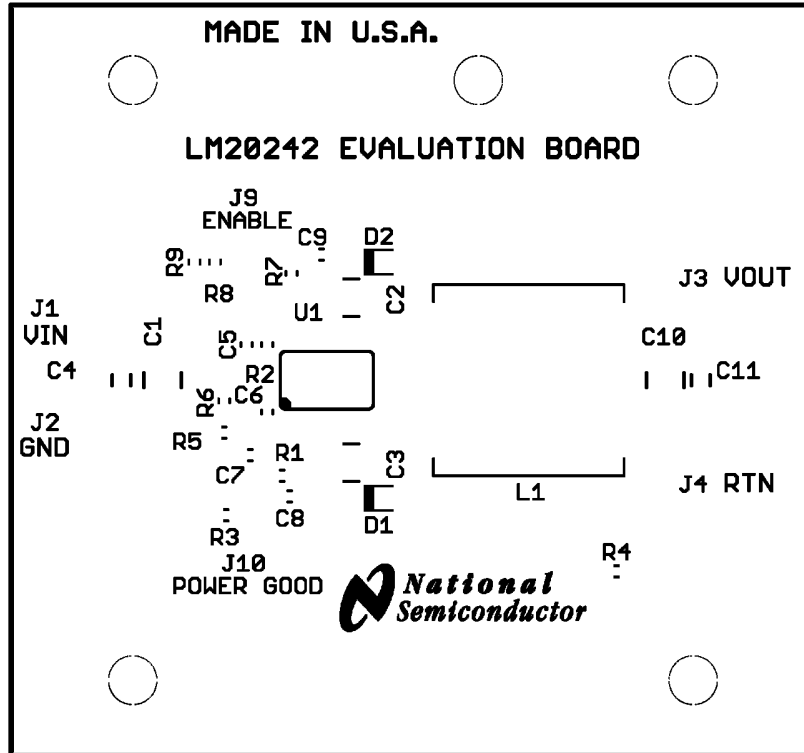


Figure 5. Silkscreen

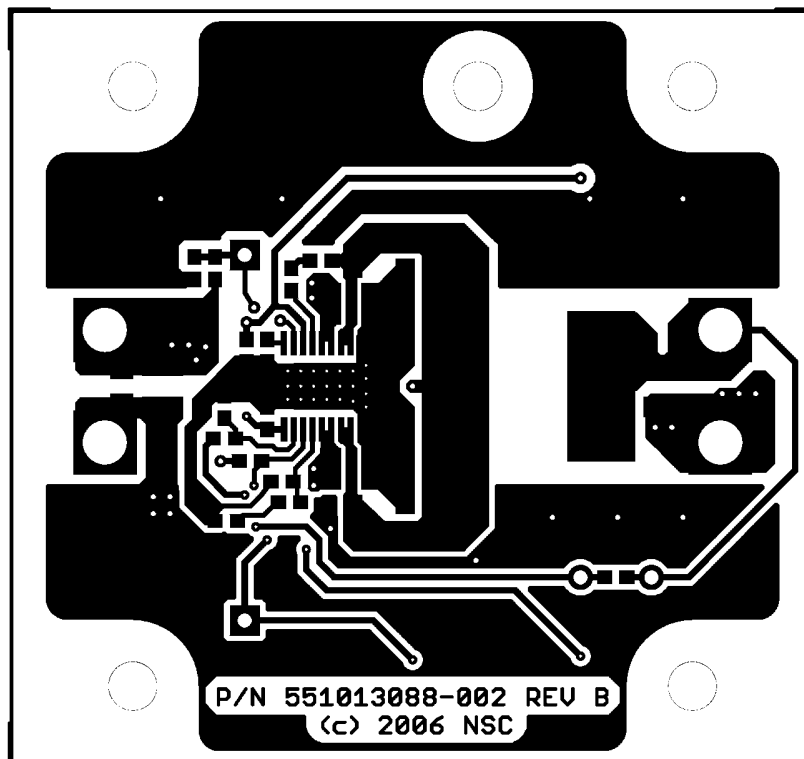


Figure 6. Component Side

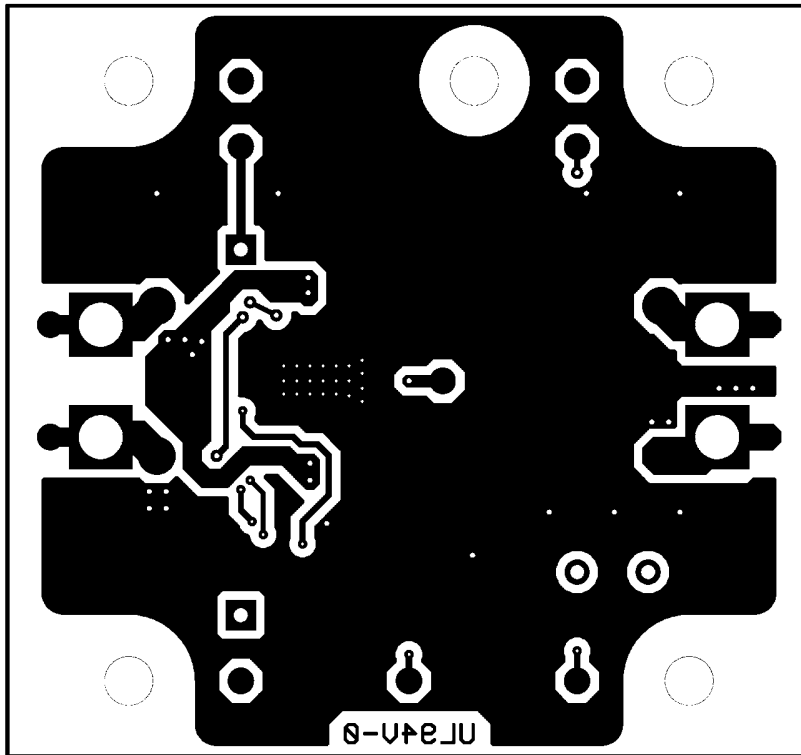


Figure 7. Solder Side

IMPORTANT NOTICE

Texas Instruments Incorporated and its subsidiaries (TI) reserve the right to make corrections, enhancements, improvements and other changes to its semiconductor products and services per JESD46, latest issue, and to discontinue any product or service per JESD48, latest issue. Buyers should obtain the latest relevant information before placing orders and should verify that such information is current and complete. All semiconductor products (also referred to herein as "components") are sold subject to TI's terms and conditions of sale supplied at the time of order acknowledgment.

TI warrants performance of its components to the specifications applicable at the time of sale, in accordance with the warranty in TI's terms and conditions of sale of semiconductor products. Testing and other quality control techniques are used to the extent TI deems necessary to support this warranty. Except where mandated by applicable law, testing of all parameters of each component is not necessarily performed.

TI assumes no liability for applications assistance or the design of Buyers' products. Buyers are responsible for their products and applications using TI components. To minimize the risks associated with Buyers' products and applications, Buyers should provide adequate design and operating safeguards.

TI does not warrant or represent that any license, either express or implied, is granted under any patent right, copyright, mask work right, or other intellectual property right relating to any combination, machine, or process in which TI components or services are used. Information published by TI regarding third-party products or services does not constitute a license to use such products or services or a warranty or endorsement thereof. Use of such information may require a license from a third party under the patents or other intellectual property of the third party, or a license from TI under the patents or other intellectual property of TI.

Reproduction of significant portions of TI information in TI data books or data sheets is permissible only if reproduction is without alteration and is accompanied by all associated warranties, conditions, limitations, and notices. TI is not responsible or liable for such altered documentation. Information of third parties may be subject to additional restrictions.

Resale of TI components or services with statements different from or beyond the parameters stated by TI for that component or service voids all express and any implied warranties for the associated TI component or service and is an unfair and deceptive business practice. TI is not responsible or liable for any such statements.

Buyer acknowledges and agrees that it is solely responsible for compliance with all legal, regulatory and safety-related requirements concerning its products, and any use of TI components in its applications, notwithstanding any applications-related information or support that may be provided by TI. Buyer represents and agrees that it has all the necessary expertise to create and implement safeguards which anticipate dangerous consequences of failures, monitor failures and their consequences, lessen the likelihood of failures that might cause harm and take appropriate remedial actions. Buyer will fully indemnify TI and its representatives against any damages arising out of the use of any TI components in safety-critical applications.

In some cases, TI components may be promoted specifically to facilitate safety-related applications. With such components, TI's goal is to help enable customers to design and create their own end-product solutions that meet applicable functional safety standards and requirements. Nonetheless, such components are subject to these terms.

No TI components are authorized for use in FDA Class III (or similar life-critical medical equipment) unless authorized officers of the parties have executed a special agreement specifically governing such use.

Only those TI components which TI has specifically designated as military grade or "enhanced plastic" are designed and intended for use in military/aerospace applications or environments. Buyer acknowledges and agrees that any military or aerospace use of TI components which have **not** been so designated is solely at the Buyer's risk, and that Buyer is solely responsible for compliance with all legal and regulatory requirements in connection with such use.

TI has specifically designated certain components as meeting ISO/TS16949 requirements, mainly for automotive use. In any case of use of non-designated products, TI will not be responsible for any failure to meet ISO/TS16949.

Products

Audio	www.ti.com/audio
Amplifiers	amplifier.ti.com
Data Converters	dataconverter.ti.com
DLP® Products	www.dlp.com
DSP	dsp.ti.com
Clocks and Timers	www.ti.com/clocks
Interface	interface.ti.com
Logic	logic.ti.com
Power Mgmt	power.ti.com
Microcontrollers	microcontroller.ti.com
RFID	www.ti-rfid.com
OMAP Applications Processors	www.ti.com/omap
Wireless Connectivity	www.ti.com/wirelessconnectivity

Applications

Automotive and Transportation	www.ti.com/automotive
Communications and Telecom	www.ti.com/communications
Computers and Peripherals	www.ti.com/computers
Consumer Electronics	www.ti.com/consumer-apps
Energy and Lighting	www.ti.com/energy
Industrial	www.ti.com/industrial
Medical	www.ti.com/medical
Security	www.ti.com/security
Space, Avionics and Defense	www.ti.com/space-avionics-defense
Video and Imaging	www.ti.com/video

TI E2E Community

e2e.ti.com