



DC POWER CONNECTORS: KLDX Series
PCB Mount DC Power Jack

Product Features

- 2.0mm and 2.5mm
- Built-In DC On/Off Switch
- Laptop and Palm Computers, Portable Modems, Radar Detectors, and Other Portable Device Applications
- CSA/NRTL Certified File No. LR78160
- UL File No. E140125

Performance Specifications

Materials and Finish

- Plastic Housing:** PBT, UL94V-0 Rated, Black Color
- Center Pin:** Copper Alloy, Nickel Plated
- Contact #1 and #3:** Brass, Tin Plated
- Contact #2:** Phosphor Bronze, Tin Plated

Electrical Characteristics

- Contact Resistance**
- Before Durability Test**
- Between Terminals:** 30 milliohms Max.
- Plug to Contacts:** 50 milliohms Max.
- After Durability Test**
- Between Terminals:** 60 milliohms Max.
- Plug to Contacts:** 100 milliohms Max.
- Rated Voltage:** 24V DC
- Rated Current:** 3.5A
- Insulation Resistance:** 100 Megohms Min. at 500V DC
- Dielectric Withstanding Voltage:** 500V AC RMS for 1 Minute

Mechanical Characteristics

- Durability Test:** 5000 Cycles
- Insertion Force:** 0.3kg - 2.5kg
- Extraction Force:** 0.3kg - 2.5kg
- Operating Temperature:** -25°C to +85°C

Generated Part Number

KLDX-0202-A

Part Number Builder

KLDX-0202	-	A	
Series		Diameter	Lead Style

Series

KLDX-0202 - PCB Mount DC Power Jack

Diameter

- 2.0mm Center Pin Diameter
- 2.5mm Center Pin Diameter

Lead Style

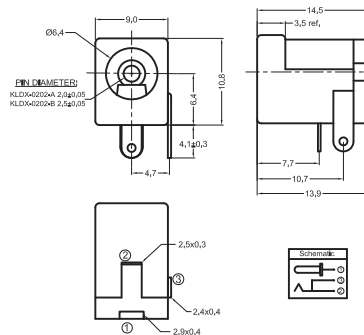
- Standard Straight
- Crimped

Contact Kycon For HT Reflow Compatible and Other Options

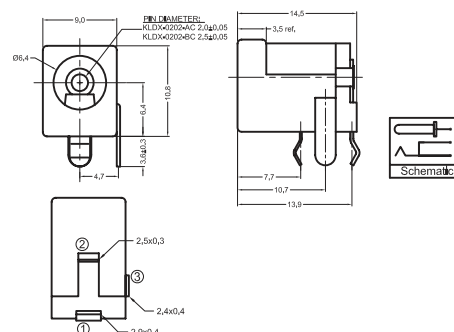
KLDX Series

Dimensions in mm

KLDX-0202-x



KLDX-0202-xC



*Also available - KLDX-HT Reflow Compatible Contact factory for specifications. 888-KYCON-22