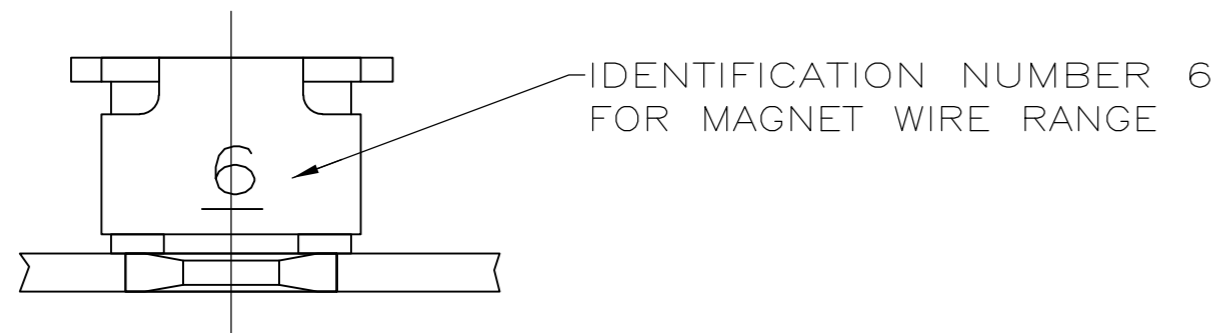
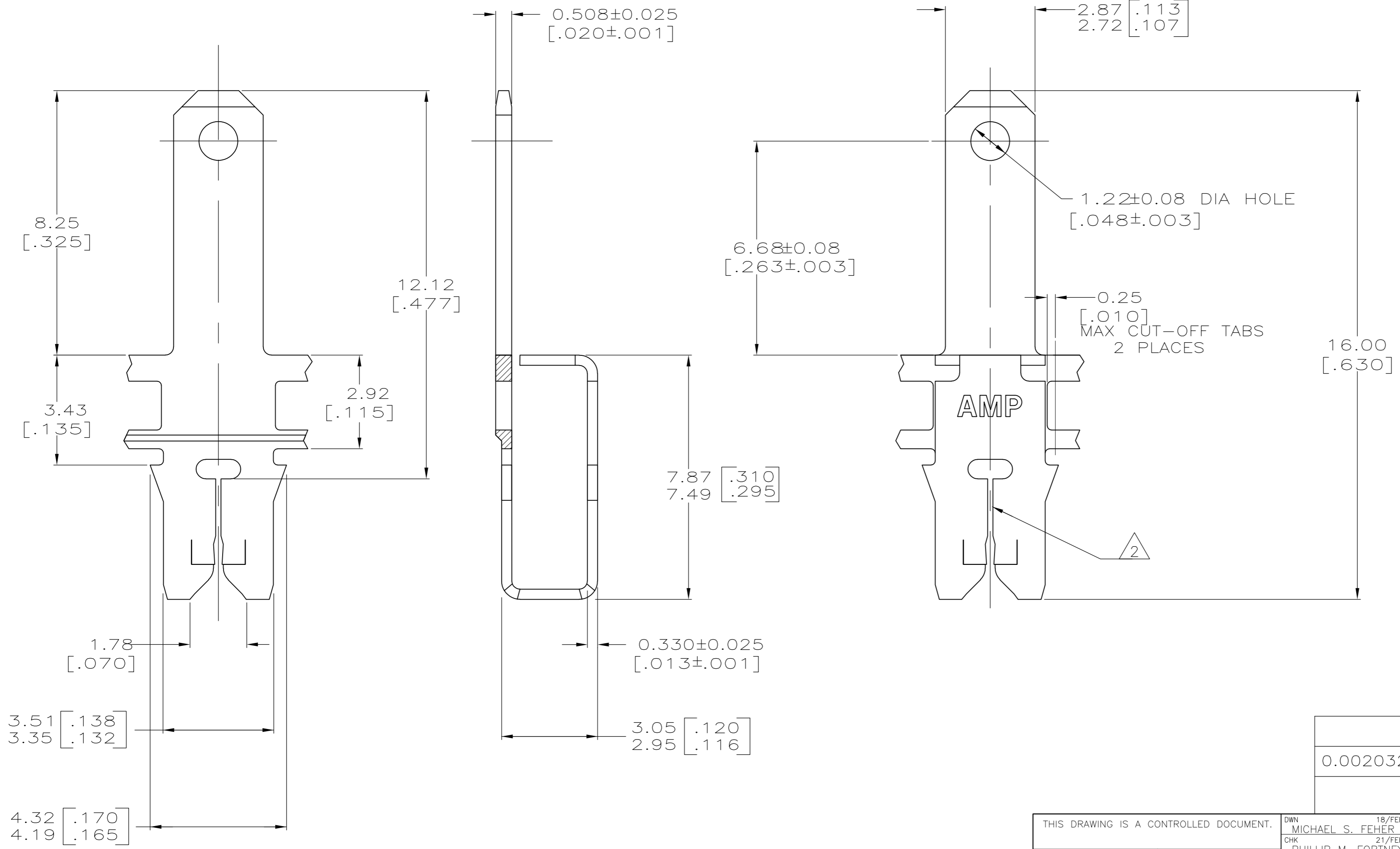


THIS DRAWING IS UNPUBLISHED. RELEASED FOR PUBLICATION  
 © COPYRIGHT - By - ALL RIGHTS RESERVED.

LOC	DIST	REVISIONS					
AF	50	P	LTR	DESCRIPTION	DATE	DWN	APVD
		E2		ECR-15-005665	10AUG2015	BDA	PKS



- 1 CONTINUOUS STRIP ON REELS WITH TERMINALS LOCATED ON 5.59±0.08 [.220±.003] CENTERS.
- 2 SLOT TERMINATES EITHER A SINGLE OR DOUBLE MAGNET WIRE OF THE SAME SIZE.  
 COPPER RANGE: 0.25-0.36mm [#30-#27] AWG.  
 ALUMINUM RANGE: 0.32-0.45mm [#28-#25] AWG.  
 ALUMINUM WIRE RANGE APPLIES FOR POST-TIN PLATED VERSIONS ONLY.
- 3 PRILIMINARY - NOT FOR PRODUCTION



UNPLATED	3 63777-2
0.002032 [.000080] MIN TIN	63777-1
FINISH	PART NO

THIS DRAWING IS A CONTROLLED DOCUMENT.		DWN 18/FEB/94 MICHAEL S. FEHER	<b>STE</b> TE Connectivity	
DIMENSIONS: INCHES		CHK 21/FEB/94 PHILLIP M. FORTNEY		
TOLERANCES UNLESS OTHERWISE SPECIFIED:		APVD 21/FEB94 TL SHUTTER	NAME TAB, FASTON, 2.79 [.110], MAG-MATE	
0 PLC ± -		PRODUCT SPEC 108-2012	SIZE CAGE CODE DRAWING NO RESTRICTED TO	
1 PLC ± -		APPLICATION SPEC 114-2046	A2 00779 C=63777	
2 PLC ± 0.25 [.010]		WEIGHT -	SCALE 10:1 SHEET 1 OF 1 REV E2	
3 PLC ± -		CUSTOMER DRAWING		
4 PLC ± -				
ANGLES ± -				
FINISH SEE TABLE				