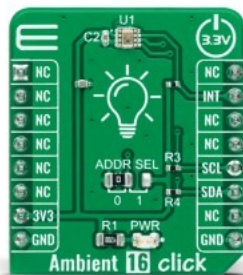


Ambient 16 Click



PID: MIKROE-4933

Ambient 16 Click is a compact add-on board used to measure the amount of the present ambient light. This board features the [BH1726NUC](#), a 16-bit digital-output ambient light sensor with an I2C interface from [Rohm Semiconductor](#). The BH1726NUC can detect a wide range of illuminance up to 30klx and provides excellent responsivity close to the human eyes' response. It is designed to control the brightness in various applications based on ambient light availability, brightness for optimum visibility, and energy efficiency. Operation in a temperature range of -40°C to 85°C ensures stable operation under extreme conditions. This Click board™ is the most suitable for obtaining ambient light data for adjusting brightness in applications that require power saving and better visibility.

Ambient 16 Click is supported by a [mikroSDK](#) compliant library, which includes functions that simplify software development. This [Click board™](#) comes as a fully tested product, ready to be used on a system equipped with the [mikroBUS™](#) socket.

Mikroe produces entire development toolchains for all major microcontroller architectures.

Committed to excellency, we are dedicated to helping engineers bring the project development up to speed and achieve outstanding results.



ISO 27001: 2013 certification of informational security management system.
 ISO 14001: 2015 certification of environmental management system.
 OHSAS 18001: 2008 certification of occupational health and safety management system.



ISO 9001: 2015 certification of quality management system (QMS).

Specifications

Type	Optical
Applications	Can be used for obtaining ambient light data for adjusting brightness in applications that require power saving and better visibility
On-board modules	BH1726NUC - 16-bit digital-output ambient light sensor from Rohm Semiconductor
Key Features	Low power consumption, corresponds to a dark window because of high sensitivity, close responsivity to the human eye, I2C interface with selectable slave address, wide illumination range, stable performance over temperature and voltage, and more
Interface	I2C
ClickID	No
Compatibility	mikroBUS
Click board size	S (28.6 x 25.4 mm)
Input Voltage	3.3V

Resources

[mikroBUS™](#)

[mikroSDK](#)

[Click board™ Catalog](#)

[Click boards™](#)

Downloads

[Ambient 16 Click schematic](#)

[BH1726NUC datasheet](#)

[Ambient 16 click 2D and 3D files](#)

[Ambient 16 click example on Libstock](#)

Mikroe produces entire development toolchains for all major microcontroller architectures.

Committed to excellency, we are dedicated to helping engineers bring the project development up to speed and achieve outstanding results.



ISO 27001: 2013 certification of informational security management system.
 ISO 14001: 2015 certification of environmental management system.
 OHSAS 18001: 2008 certification of occupational health and safety management system.



ISO 9001: 2015 certification of quality management system (QMS).