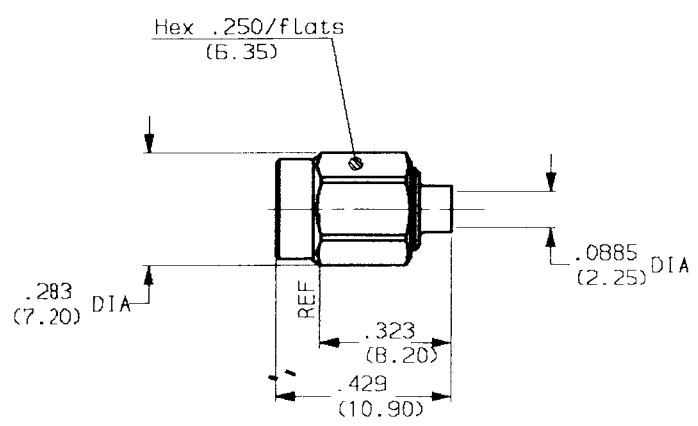


**STRAIGHT CABLE PLUG-SOLDER TYPE**  
CABLE .085

PEN DEP90.R121.000



weight 0.053 oz ( 1.5 g)      cables:RG 405

**CHARACTERISTICS**

<b>NOMINAL IMPEDANCE</b>	50 $\Omega$	<b>STANDARDISATION</b>	
<b>FREQUENCY RANGE</b>	0-18 GHz	<b>CABLE RETENTION</b>	45 Lb mini 200 N
<b>TEMPERATURE RATING</b>	-65/+115 °C	<b>CENTER CONTACT RETENTION</b>	
<b>VSWR</b>	AD Max	Axial force - mating end	NA Lb mini N
<b>RF INSERTION LOSS</b>	AD $\sqrt{f}$ dB Maxi	Axial force - opposite end	NA Lb mini N
<b>VOLTAGE RATING</b>	250 Vrms Maxi	Torque (Min)	NA Inch.oz cm.N
<b>DIELECTRIC WITHSTANDING VOLTAGE</b>	750 Vrms mini	<b>RECOMMENDED TORQUES</b>	
<b>INSULATION RESISTANCE</b>	5000 Ma mini	Mating	7.088 Inch.Lb 80 cm.N
<b>HERMETIC SEAL</b>	NA cc/s Atm.cm <sup>3</sup> /s	Panel nut	NA Inch.Lb cm.N
<b>LEAKAGE (pressurized only)</b>	NA psi MPa	Clamp nut	NA Inch.Lb cm.N

**CONSTRUCTION**

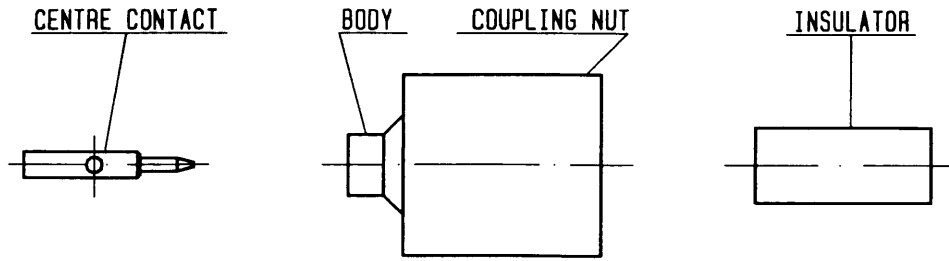
CONNECTOR PARTS	MATERIALS	FINISH
BODY	BERYLLIUM COPPER	Nickel
OUTER CONTACT	-	-
CENTER CONTACT	BERYLLIUM COPPER	Gold over nickel
INSULATORS	PTFE	-
COUPLING NUT	STAINLESS STEEL	Passivated
GASKET	SILICON	-
-	-	-
-	-	-
-	-	-

ISSUE	REVISION No	DESCRIPTION	BY	DATE
.	.	.	.	.
.	.	.	.	.
.	.	.	.	.
.	.	.	.	.

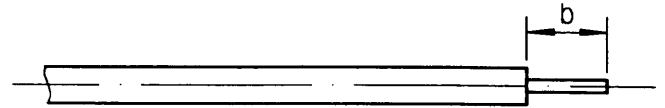
Initiated on 06-SEP-90  
Superseded on -----

The information given here is subject to change without notice. Design changes may be in order to improve the product.



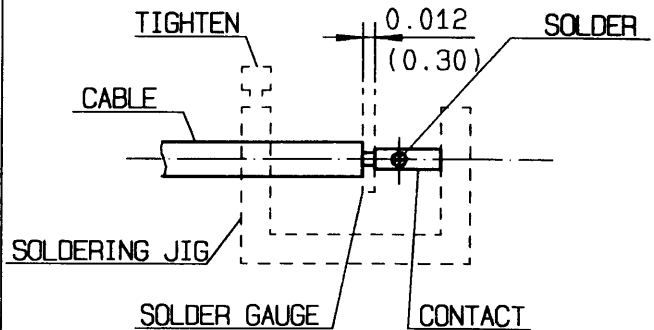


① Take the tool kit : R 282 118 000 .  
Insert the cable into end B of the cable trimming tool (N° 21).  
Saw through cable outer and into dielectric whilst turning the cable.  
Cut through the dielectric.  
Trim the end of the cable.

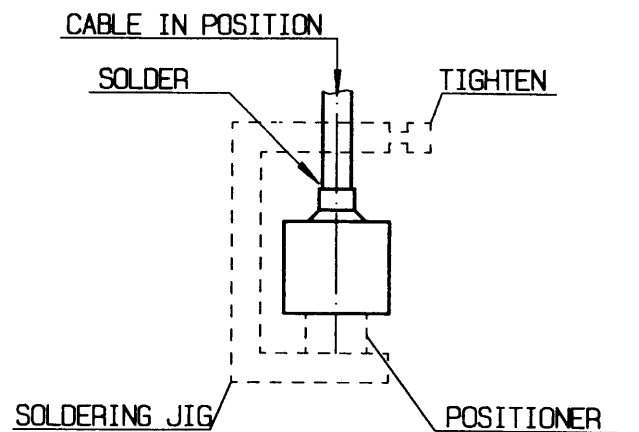


Stripping	a	b	c	d	e
inch	0	0.079 0	0	0	0
mm	-	2	-	-	-

② Place the cable into the assembly jig. (N° 10).  
Slide contact onto the cable.  
Insert solder gauge (N° 60) between contact and cable .  
Tighten and solder the contact .



③ After cooling remove cable assembly from the jig .  
Screw positioner (N° 75) into the connector .  
Slide cable into the connector until it bottoms against positioner.  
Tighten .  
Put 3 rings of solder around the cable and solder .



④ After cooling remove cable assembly from the jig .  
Screw female dielectric insert tool onto connector and insert insulator with the dielectric plunger .  
Dielectric insert tool (N° 30) and dielectric plunger (N° 32).

