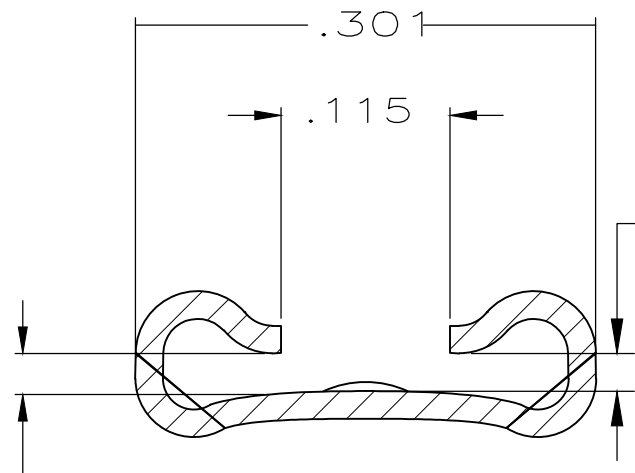
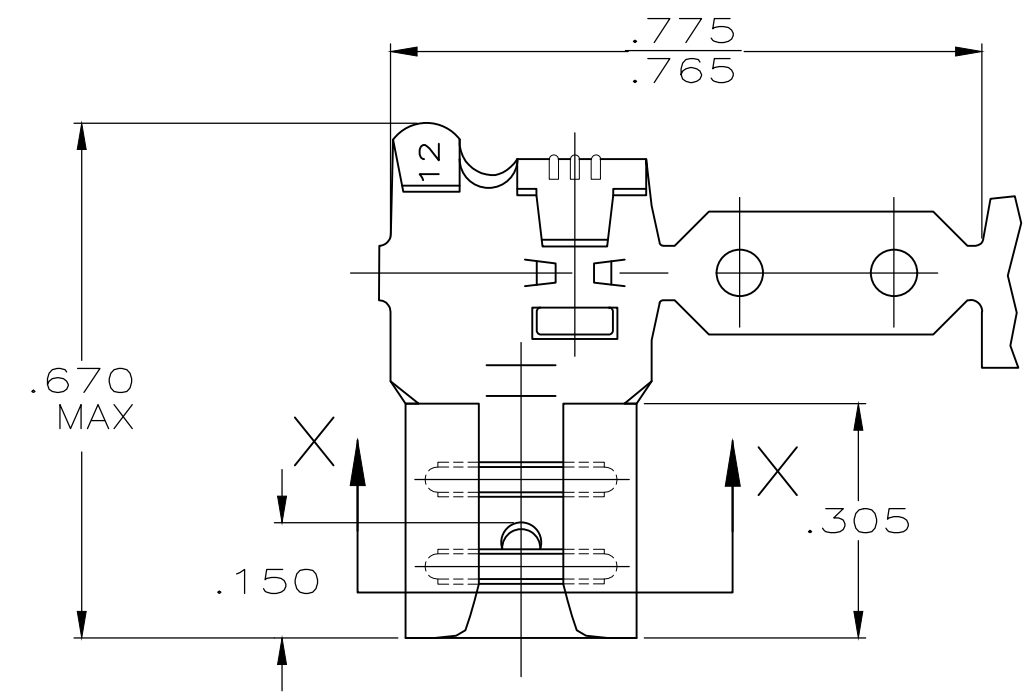


THIS DRAWING IS UNPUBLISHED. RELEASED FOR PUBLICATION  
 © COPYRIGHT - By - ALL RIGHTS RESERVED.

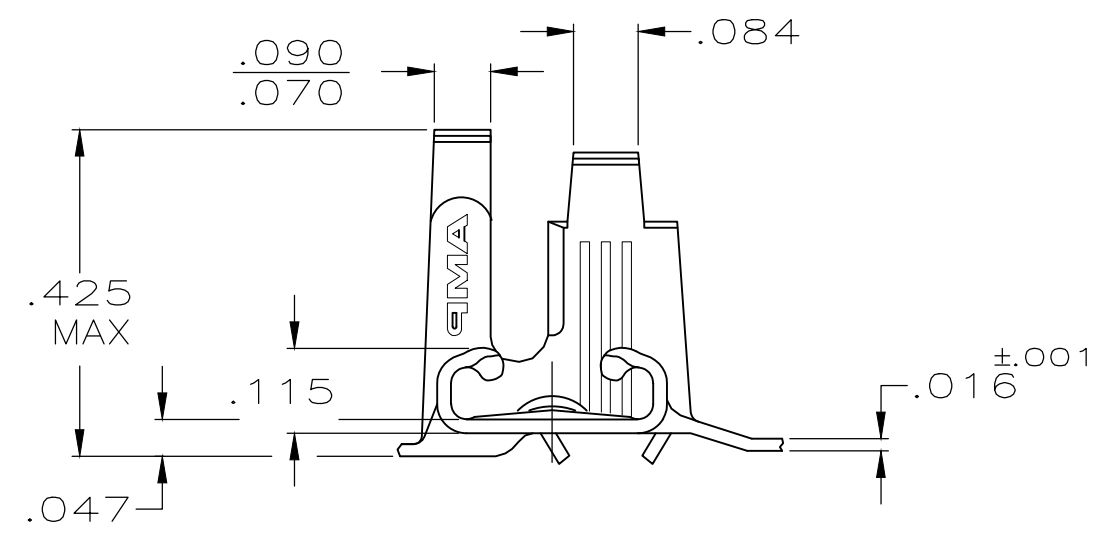
LOC	DIST	REVISIONS			
P	LTR	DESCRIPTION	DATE	DWN	APVD
AF	50	S1	REVISED PER ECR-20-009164	07AUG2020	MK DH



FITS .250 SERIES FASTON TAB  
 SECTION X-X  
 SCALE 8:1

GAP AS REQUIRED TO MEET FORCE SPECIFICATIONS AND .028 MAX

- 1 CONTINUOUS STRIP ON REELS.
- 2 FOREIGN PRODUCTION ONLY.
- 4 MATING TAB THK IS .033-.030
- 5 WIRE SIZE IS #18-#12 AWG
- 6 INSULATION RANGE IS .110-.210 DIA.
- 7 PRELIMINARY - NOT FOR PRODUCTION



FINISH	MATERIAL	PART NO
.000150 MIN NICKEL	T2 STEEL	42742-5
PRE-TIN	4M BRASS	42742-3
TIN	BRASS	42742-2
-	BRASS	42742-1

THIS DRAWING IS A CONTROLLED DOCUMENT.		DWN JR RUTH 1/23/91	TE Connectivity RECEPTACLE, FASTON,™ FLAG, .250 SERIES				
DIMENSIONS: INCHES		CHK MS FEHER 1/24/93				NAME	RESTRICTED TO
TOLERANCES UNLESS OTHERWISE SPECIFIED:		APVD J GILLESPIE 1/24/93				PRODUCT SPEC	SIZE
0 PLC ± - 1 PLC ± - 2 PLC ± - 3 PLC ± .015 4 PLC ± - ANGLES ± -		APPLICATION SPEC				CAGE CODE	DRAWING NO
MATERIAL BRASS	FINISH SEE TABLE	WEIGHT -	A3	00779	C-42742		
CUSTOMER DRAWING			SCALE 4:1	SHEET 1 OF 1	REV S1		