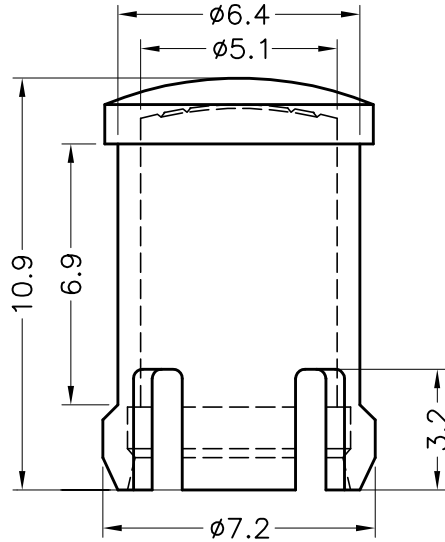
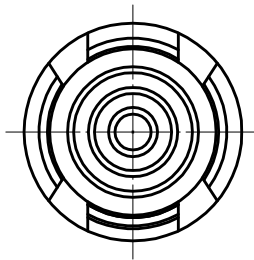


| REVISIONS | | | |
|-----------|-------------|------|----|
| REV | DESCRIPTION | DATE | BY |
| | | | |
| | | | |



MOUNTING HOLE: $\phi 6.40^{+0.05}_{-0}$
 CHASSIS THICKNESS: 0.8~6.35



| PART NO. | MATERIAL | COLOR |
|-----------|------------|-------|
| LC5-1 | PC UL94V-2 | CLEAR |
| LC5-1V0 | PC UL94V-0 | CLEAR |
| LC5-1(GR) | PC UL94V-2 | GREEN |
| LC5-1(MA) | PC UL94V-2 | AMBER |
| LC5-1(AR) | PC UL94V-2 | RED |



康揚企業股份有限公司
 KANG YANG HARDWARE ENTERPRISE CO., LTD.
 康揚塑膠(東莞)有限公司
 KANG YANG PLASTIC(DONG GUAN) CO., LTD.
 康哲電腦配件(吳江)有限公司
 KANG CHE COMPUTER COMPONENTS(WUJIANG) CO., LTD.

| | | |
|--------------------------------------|-----------|--------------------|
| TITLE | LENS CAP | 產品規格圖面 |
| MATERIAL | SEE ABOVE | DATE 2006.05.08 |
| FINISH | | DRAWN JASON |
| COLOR | SEE ABOVE | CHECK |
| UNLESS OTHERWISE SPECIFIED TOLERANCE | ± 0.2 | APPROVED |

| | | | |
|-------------|-----------|----------------|--------|
| PART NUMBER | SEE ABOVE | DRAWING NUMBER | LC5-1H |
| SIZE | A4 | SCALE | 5:1 |
| UNIT | mm | REV | C |