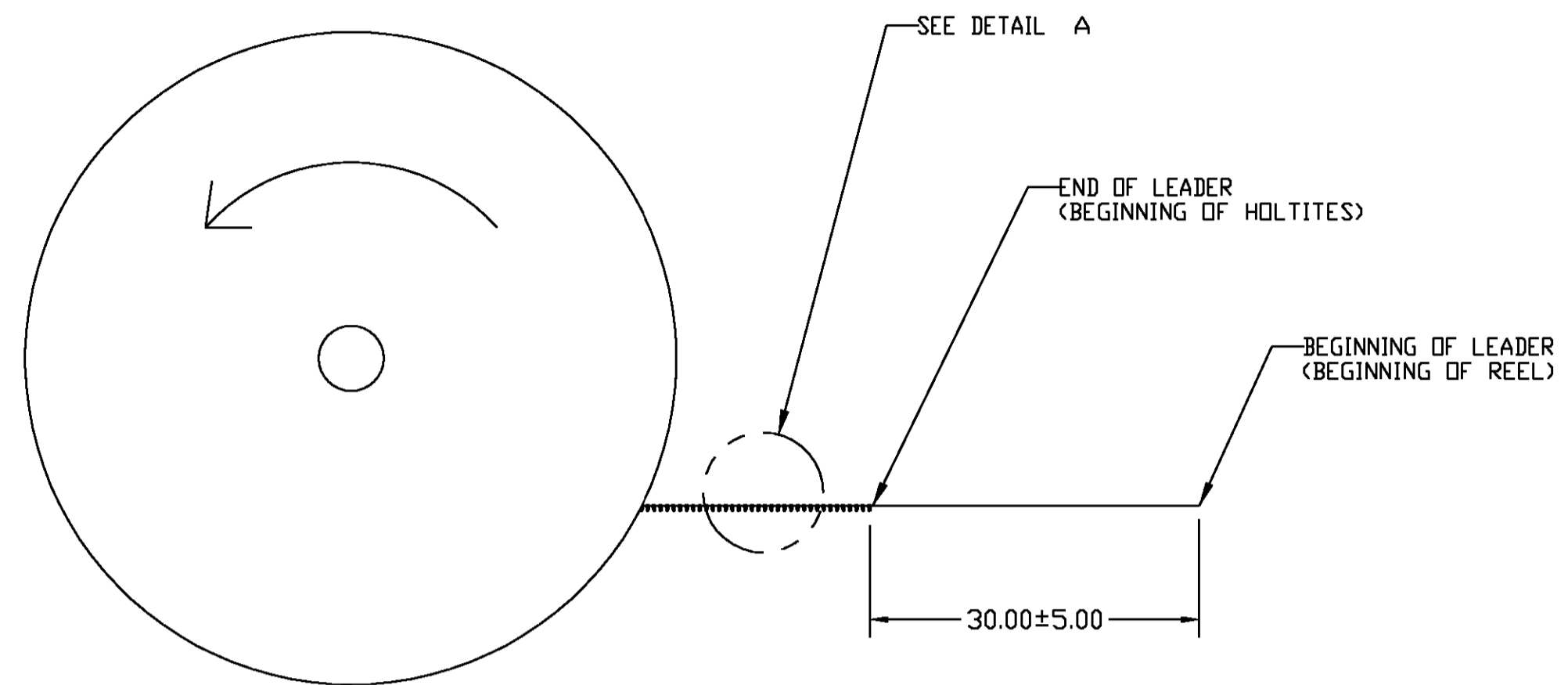
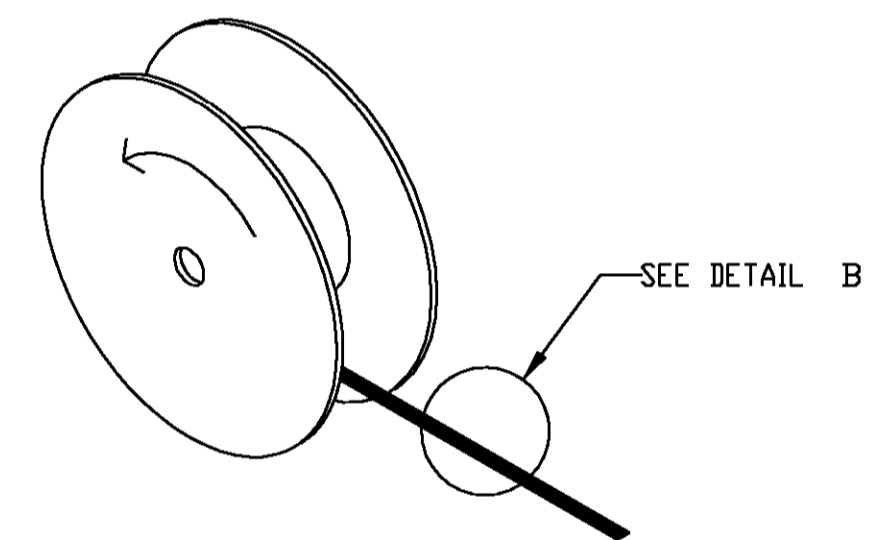


THIS DRAWING IS UNPUBLISHED. RELEASED FOR PUBLICATION BY TYCO ELECTRONICS CORPORATION. ALL RIGHTS RESERVED.

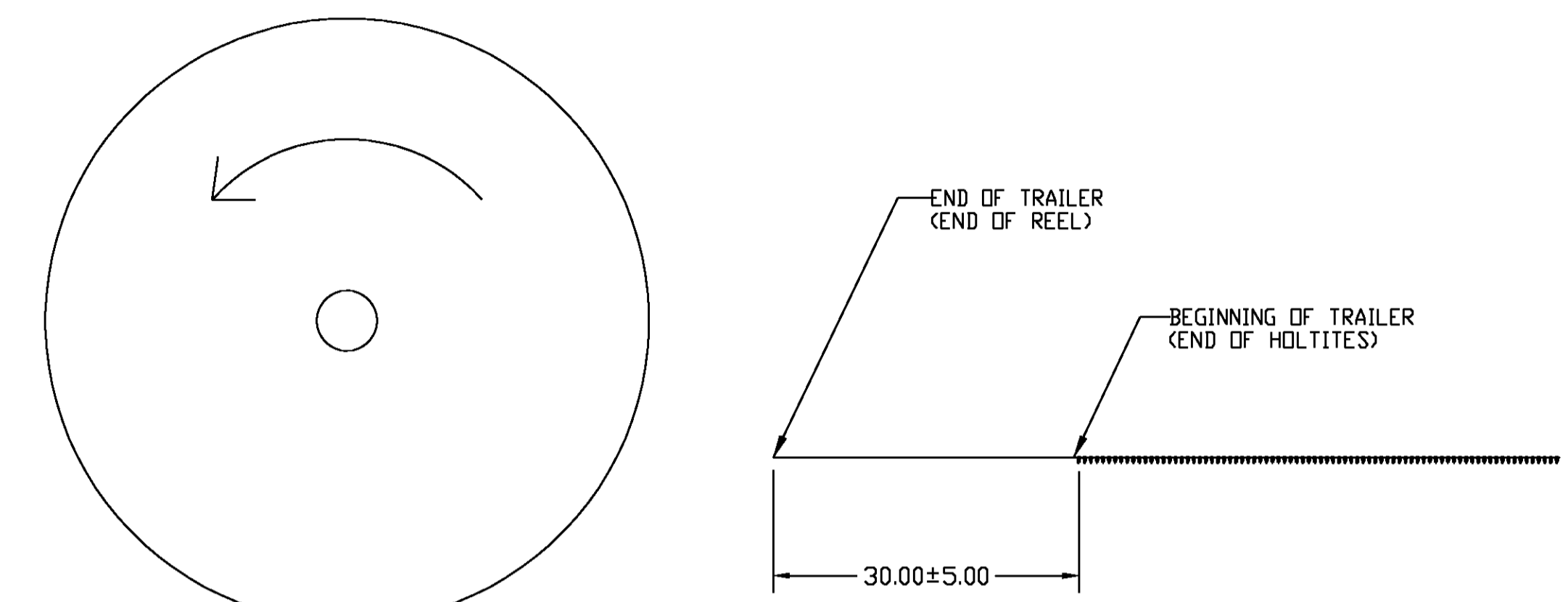
REVOLUTIONS		DATE		BY		APPROVED	
NO.	DESCRIPTION						
AD	00						
A	REV PER 0G3C-0430-00	26OCT00		BH	KW		



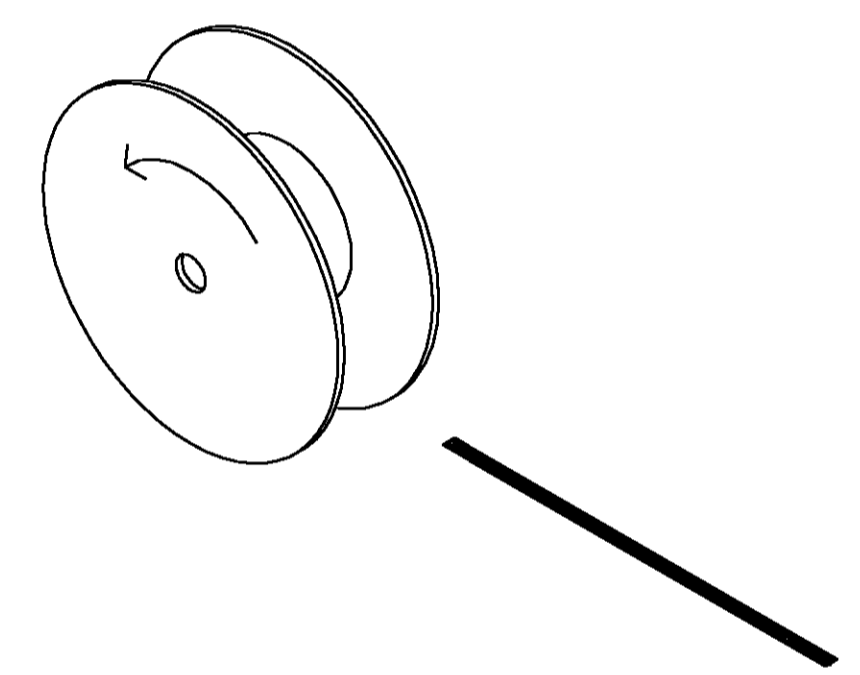
\*LEADER\* + BEGINNING OF REEL



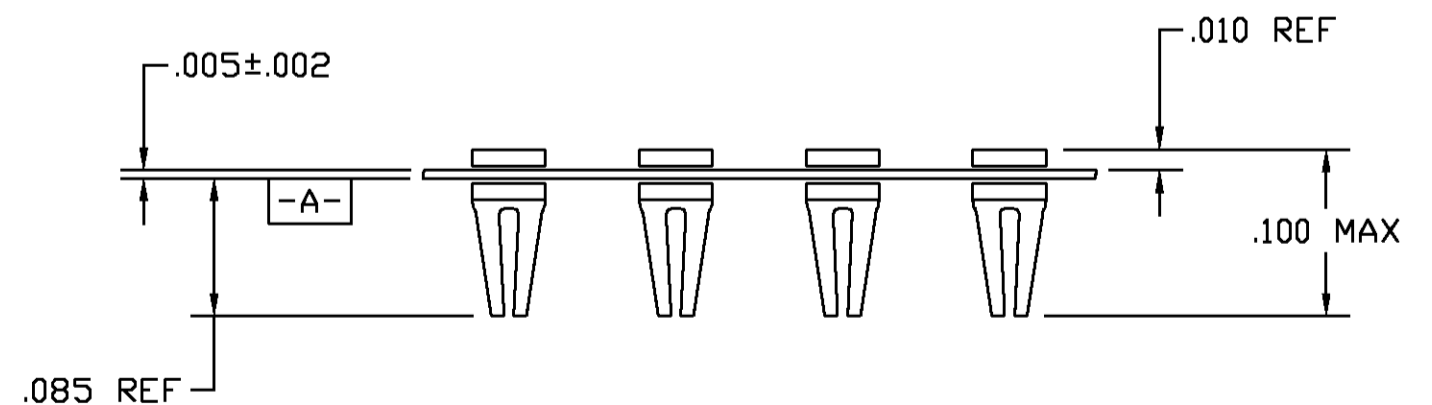
\*LEADER\* + BEGINNING OF REEL



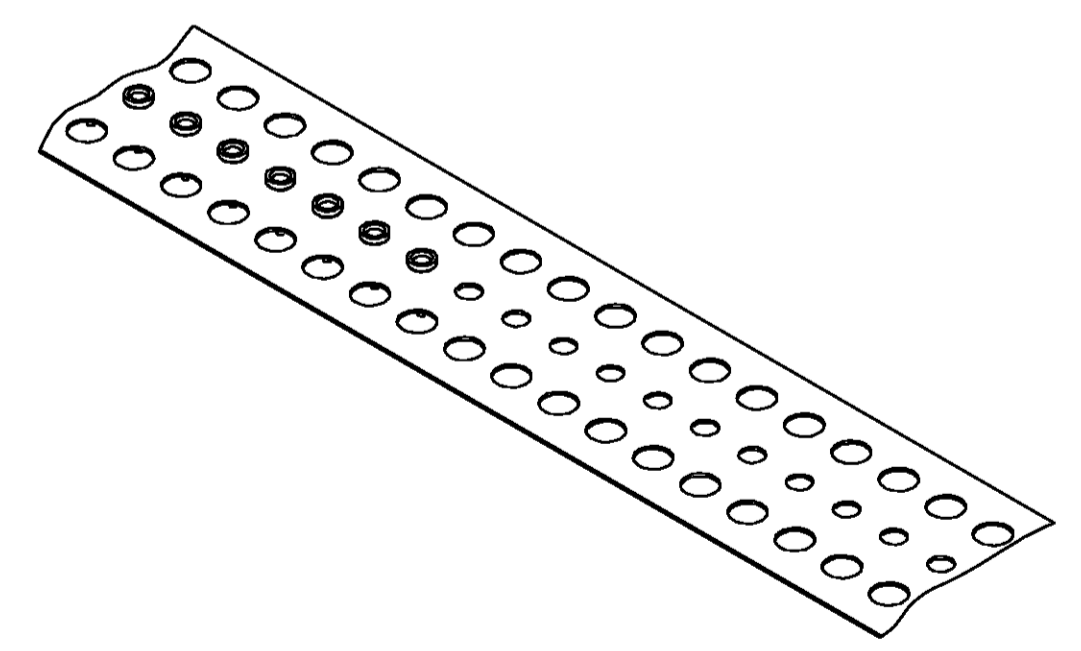
\*TRAILER\* + END OF REEL



\*TRAILER\* + END OF REEL



DETAIL A  
MYLAR STRIP LOADED WITH HOLTITES  
(SAMPLE VIEW FOR HOLTITE ORIENTATION PURPOSES)



DETAIL B  
PARTIALLY LOADED MYLAR STRIP  
(END OF \*LEADER\*)

NOTES FOR ASSEMBLED REEL:

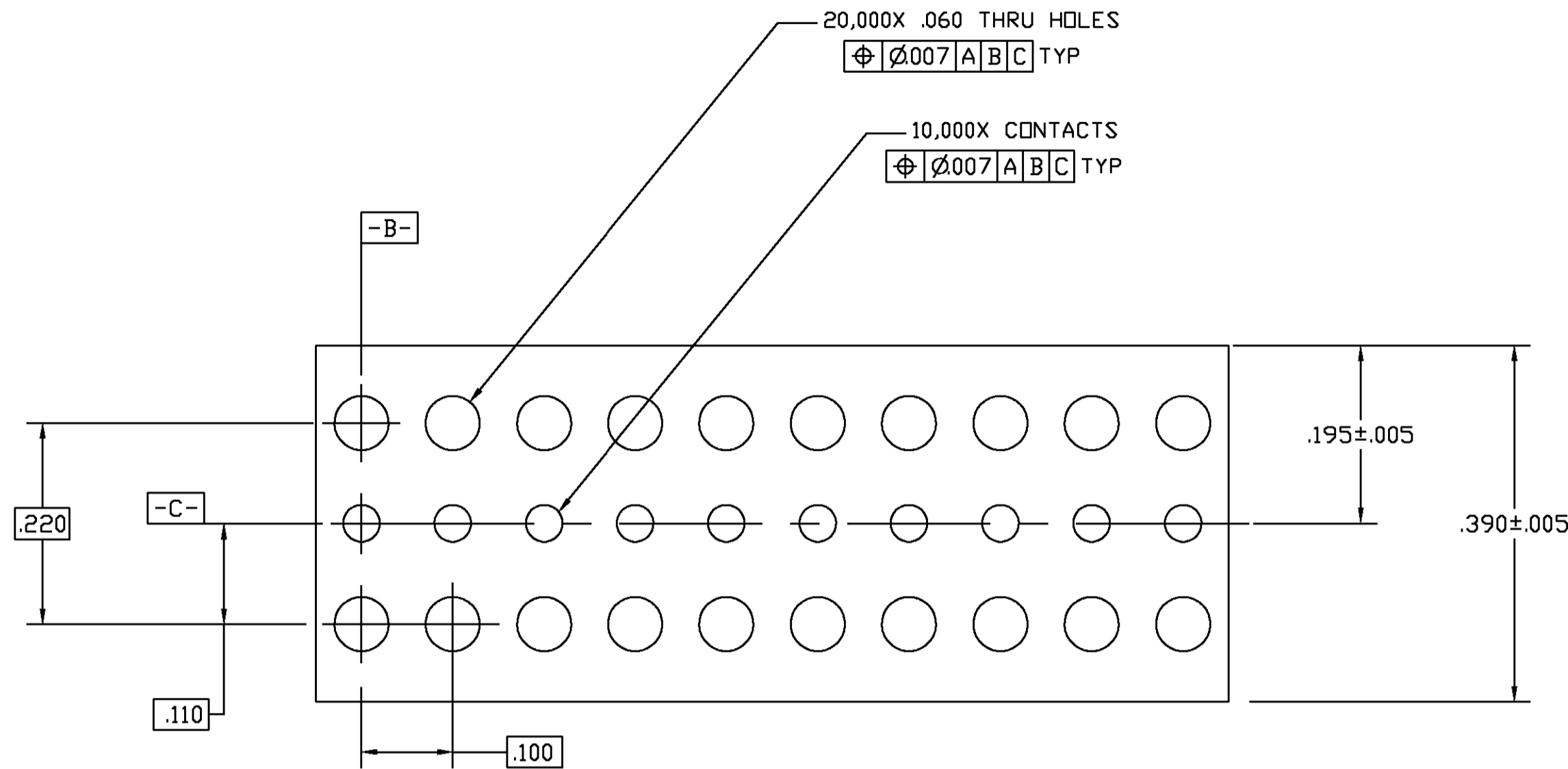
1. ASSEMBLED REEL LOADED WITH 10,000 HOLTITES. HOLTITE DESCRIPTION: 80-200 MICROINCHES TIN-LEAD OVER 75-100 MICROINCHES COPPER UNDERPLATE; ACCEPTS .016-.021 DIAMETER OR .011-.018 RECTANGULAR LEAD; RECOMMENDED FINISHED PLATED THRU-HOLE IN PCB TO BE .041 ± .002; AND RECOMMENDED FINISHED PCB HOLE PLATING TO BE .0003-.0005 TIN-LEAD OVER .001 COPPER PLATE.
2. KRAFT PAPER (.004 THICK) SHOULD BE USED AS A SPACER BETWEEN EACH LAYER OF HOLTITES.
3. NO SPLICES PERMITTED ANYWHERE ON MYLAR TAPE.
4. MAXIMUM OF ONE BREAK PER REEL ALLOWED IN THE MYLAR TAPE.
5. ALL BREAKS SHOULD FOLLOW THE SAME REQUIREMENTS FOR \*LEADER\* AND \*TRAILER\* AS IF IT WERE A NEW/COMPLETE REEL WITH NO BREAKS.

PART NUMBER 147504-1 AS SHOWN

THIS DRAWING IS A CONTROLLED DOCUMENT.		DRN R BROWN 25SEP00	AMP Tyco Electronics Corporation Harrisburg, PA 17105
DIMENSIONS: INCHES	TOLERANCES UNLESS OTHERWISE SPECIFIED:	CHK K WRIGHT 25SEP00	NAME K WRIGHT 25SEP00
0 PL ± .005	1 PL ± .005	APPROVAL	PRODUCT SPEC
2 PL ± .005	3 PL ± .010	APPLICATION SPEC	
4 PL ± .0005	ANGLES ± 0.1	SIZE	CAGE CODE
MATERIAL	FINISH	DRAWING NO	RESTRICTED TO
		A1 00779 ©=147504	
		CUSTOMER DRAWING	SCALE NTS SHEET 1 OF 2 REV A

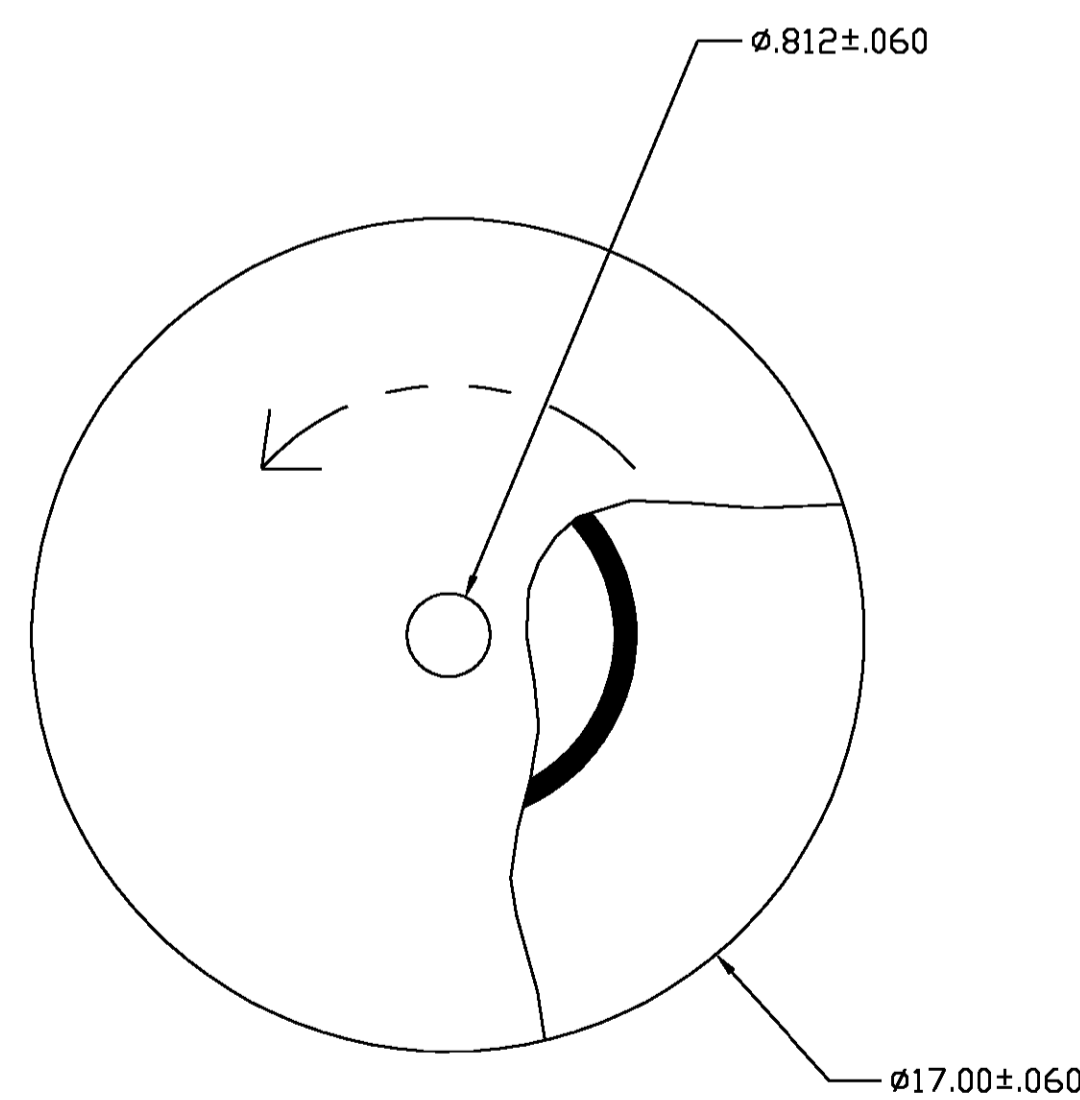
THIS DRAWING IS UNPUBLISHED. RELEASED FOR PUBLICATION. BY TYCO ELECTRONICS CORPORATION. ALL RIGHTS RESERVED.

LOC		DIST		REVISIONS			
P	LR	DESCRIPTION	DATE	DR	APD		
-	-	SEE SHEET 1	-	-	-	-	-

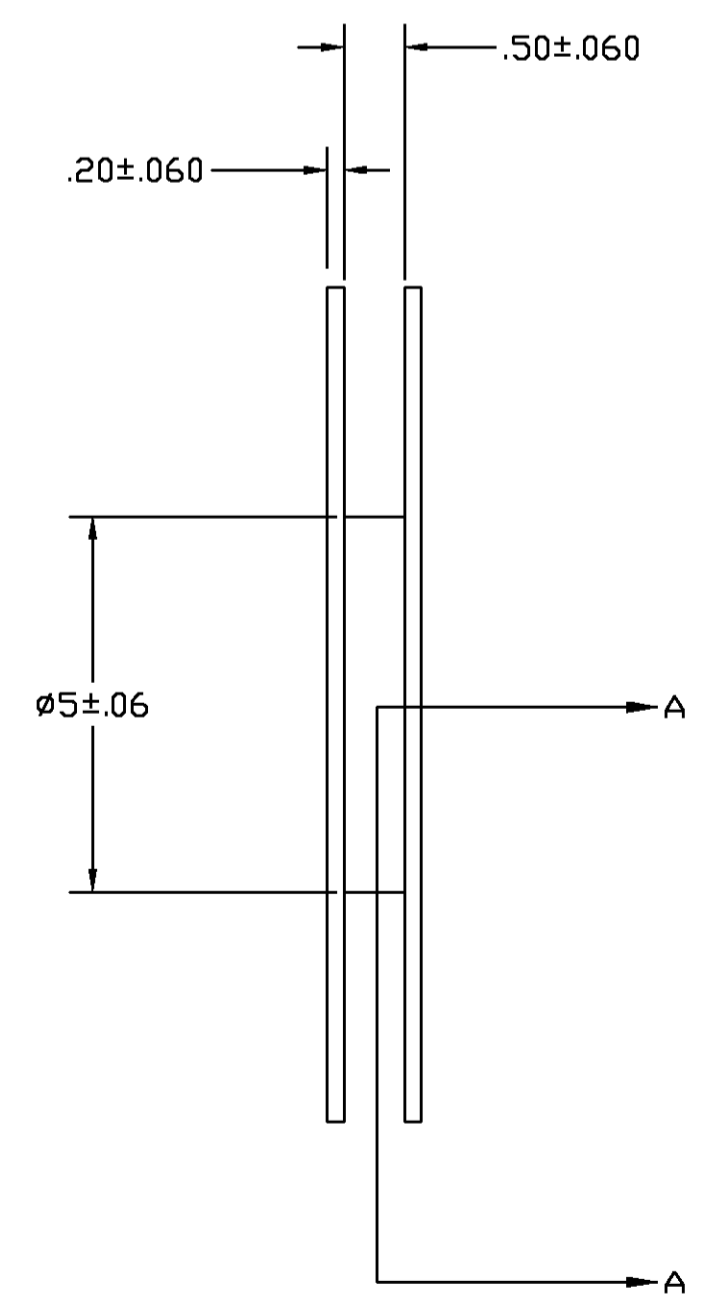


MYLAR TAPE  
(SAMPLE VIEW FOR MYLAR TAPE PUNCH PATTERN)

- NOTES FOR MYLAR TAPE:
1. MATERIAL: MYLAR
  2. DATUM 'A' IS DEFINED AS THE BOTTOM SURFACE OF THE MYLAR TAPE (AS SHOWN IN DETAIL A ON SHEET 1).
  3. DATUM B AND C ARE DEFINED AS THE CENTER OF THE HOLE PUNCHED FOR THE HOLTITES.
  4. THESE DIMENSIONS AND TOLERANCES APPLY BEFORE AND AFTER THE TAPE HAS BEEN LOADED WITH HOLTITES.
  5. MYLAR TAPE SHOULD HAVE 30' OF LEADER (PUNCHED TAPE WITH NO HOLTITES)
  6. MYLAR TAPE SHOULD HAVE 30' OF TRAILER (PUNCHED TAPE WITH NO HOLTITES)
  7. 10,000 HOLTITES SHOULD BE LOADED INTO THE MYLAR TAPE.
  8. NO SPLICES PERMITTED ANYWHERE ON THE MYLAR TAPE.
  9. MAXIMUM OF ONE BREAK PER REEL ALLOWED IN THE MYLAR TAPE.
  10. ALL BREAKS SHOULD FOLLOW THE SAME REQUIREMENTS FOR 'LEADER' AND 'TRAILER' AS IF IT WERE A NEW/COMPLETE REEL WITH NO BREAKS.



SECTION A-A  
(DIMENSION FOR HOLTITE REEL)



- NOTES FOR REEL:
1. MATERIAL: CARDBOARD.

THIS DRAWING IS A CONTROLLED DOCUMENT.		DRN R BROWN	25SEP00	AMP Tyco Electronics Corporation Harrisburg, PA 17105	
DIMENSIONS: INCHES		CHK K WRIGHT	25SEP00	NAME HOLTITE REEL ASSEMBLY HOLTITES ON MYLAR ON REEL	
TOLERANCES UNLESS OTHERWISE SPECIFIED:		APD K WRIGHT	25SEP00	SIZE A1	
0 PLC ± -	1 PLC ± -	PRODUCT SPEC		CAGE CODE 00779	
2 PLC ± .02	3 PLC ± .010	APPLICATION SPEC		DRAWING NO 147504	
4 PLC ± .0005	ANGLES ± 0.1	WEIGHT		RESTRICTED TO	
MATERIAL		FINISH		CUSTOMER DRAWING	
				SCALE NTS	SHEET 2 OF 2 REV A