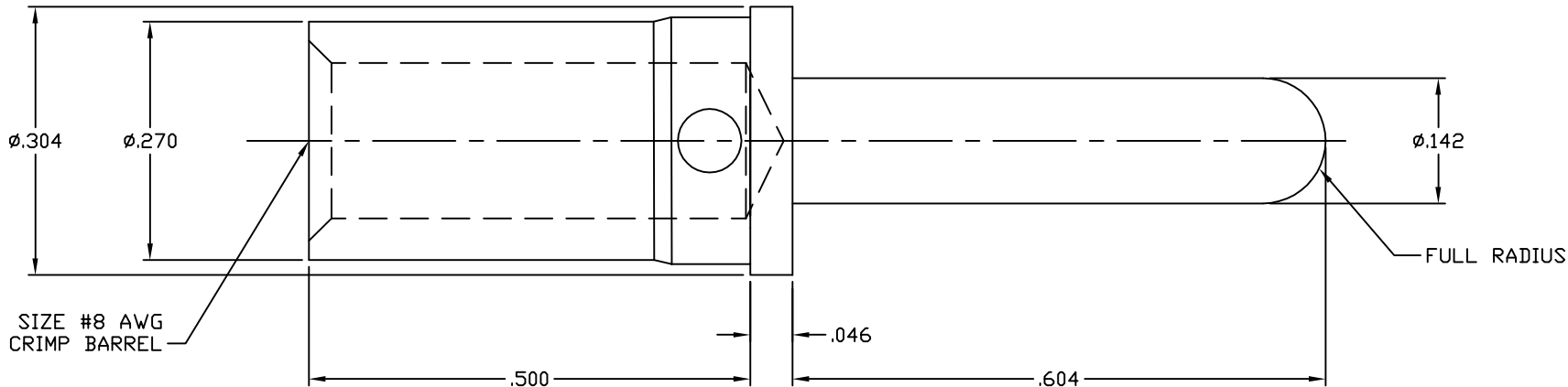


This drawing involves proprietary design rights of Tyco Electronics Corporation, and all design, manufacture, reproduction, use and sale rights regarding the same are expressly reserved. It is submitted for a specific purpose and the recipient by accepting this drawing, assumes custody and control and agrees to take reasonable precautions: (a) that this drawing will not be copied and reproduced, in whole or in part, or its contents revealed in any manner, or to any person except to meet the purpose for which it was delivered and (b) that any special features peculiar to this design will not be incorporated in other projects without the expressed written permission of Tyco Electronics Corporation.

REVISIONS			
EC	REV	DESCRIPTION	DATE
CPR	A	NEW RELEASE	05/16/06



5. FOR TERMINATION, USE FOLLOWING EQUIPMENT:  
 SHOWN FOR REFERENCE ONLY (USER SUPPLIED)  
 CRIMP TOOL: M22520/23-01  
 INDENTER HEAD: M22520/23-02  
 LOCATOR: M22520/23-09

4. FINISH: SILVER PLATED, .000200 MIN THICK  
 OVER NICKEL PLATED, .000040 MIN THICK

3. MATERIAL: COPPER ALLOY.

2. ITEMS PROVIDED TO THIS SPECIFICATION SHALL BE IDENTIFIED ON THE CONTAINER WITH THE FOLLOWING INFORMATION:  
 PART NUMBER & DATE CODE OF MANUFACTURE.

1. PART NUMBER CHANGES AND OR DESIGN CHANGES AFFECTING ITEM INTERCHANGEABILITY REQUIRE PRIOR TYCO APPROVAL AND AUTHORIZATION BY REVISION TO THIS DRAWING.

NOTES: UNLESS OTHERWISE SPECIFIED

INCH OR INCH (MM) THIRD ANGLE PROJECTION UNLESS OTHERWISE SPECIFIED DIMENSIONS ARE IN INCHES (METRIC) TOLERANCES ANGLES $\pm .5^\circ$ DECIMALS .XXX $\pm .010 (.25)$ .XX $\pm .02 (.3)$	DRAWN HA NGUYEN	DATE 05/16/06	<b>tyco</b> <b>Electronics</b> Tyco Electronics Corporation Menlo Park, Ca 94025 <b>ELCON</b>	1766197-1	AS SHOWN
	CHECKED			PART NUMBER	DESCRIPTION
	APPROVED		TITLE CONTACT, PIN, SIZE #8 CRIMP, PREMATE, .48 PIN EXT REMOVABLE		
	APPROVED STEVE FLICKINGER	05/16/06	SIZE B	DWG NUMBER C= 1766197	REV. A
	DCA APPROVED HA NGUYEN	05/16/06	ACAD FILE NUMBER C1766197A.DWG		
			DWG SCALE 8=1		SH 1 OF 1