



acoustic signal device, compact, 22 mm, round, Metal, black, Continuous tone 2.4 kHz, IP40, Sound pressure min. 80 dB/10 cm, with holder, Operating voltage 24 V AC/DC, screw terminal

product brand name	SIRIUS ACT
product designation	Acoustic signaling device
design of the product	Compact unit
product type designation	3SU1
product line	Metal, shiny, 22 mm
manufacturer's article number of the supplied holder	3SU1550-0AA10-0AA0
Enclosure	
number of command points	1
Actuator	
color of the actuating element	black
material of the actuating element	plastic
shape of the actuating element	round
outer diameter of the actuating element	29.5 mm
Front ring	
product component front ring	No
Holder	
material of the holder	Metal
General technical data	
loudness level at 10 cm distance	80 dB
insulation voltage rated value	320 V
degree of pollution	3
surge voltage resistance rated value	4 kV
consumed current at rated value of operating voltage maximum	28 mA
protection class IP	IP40
• of the terminal	IP20, clamping screw tightened
degree of protection NEMA rating	1
shock resistance	
• acc. to IEC 60068-2-27	Sinusoidal half-wave 50g / 11 ms
vibration resistance	
• acc. to IEC 60068-2-6	10 ... 500 Hz: 5g
reference code acc. to IEC 81346-2	P
relative positive tolerance of the operating voltage	20 %
relative negative tolerance of the operating voltage	20 %
Supply voltage	
type of voltage of the supply voltage of the acoustic signal element	AC/DC
supply voltage at AC	

<ul style="list-style-type: none"> at 50 Hz rated value at 60 Hz rated value 	24 V
supply voltage at DC rated value	24 V
Control circuit/ Control	
inrush current maximum	2 A
Connections/ Terminals	
type of electrical connection	screw-type terminals
type of connectable conductor cross-sections	
<ul style="list-style-type: none"> solid with core end processing solid without core end processing finely stranded with core end processing finely stranded without core end processing at AWG cables 	2x (0.5 ... 0.75 mm ²) 2x (1.0 ... 1.5 mm ²) 2x (0.5 ... 1.5 mm ²) 2x (1.0 ... 1.5 mm ²) 2x (18 ... 14)
tightening torque of the screws in the bracket	1 ... 1.2 N·m
<ul style="list-style-type: none"> tightening torque with screw-type terminals 	0.8 ... 1 N·m
Ambient conditions	
<ul style="list-style-type: none"> ambient temperature during operation ambient temperature during storage 	-25 ... +70 °C -40 ... +80 °C
environmental category during operation acc. to IEC 60721	3M6, 3S2, 3B2, 3K6 (with relative air humidity of 10 ... 95 %, no condensation in operation permitted for all devices behind front panel)
Installation/ mounting/ dimensions	
fastening method	front panel mounting
height	40 mm
width	30 mm
shape of the installation opening	round
mounting diameter	22.3 mm
positive tolerance of installation diameter	0.4 mm
mounting height	11.4 mm
installation width	29.5 mm
installation depth	49.6 mm

Certificates/ approvals		
General Product Approval	Declaration of Conformity	Test Certificates



[Miscellaneous](#)



[Special Test Certificate](#)

Test Certificates	other
--------------------------	--------------

[Type Test Certificates/Test Report](#)

[Confirmation](#)

Further information

Information- and Downloadcenter (Catalogs, Brochures,...)

<https://www.siemens.com/ic10>

Industry Mall (Online ordering system)

<https://mall.industry.siemens.com/mall/en/en/Catalog/product?mlfb=3SU1250-6KB10-1AA0>

Cax online generator

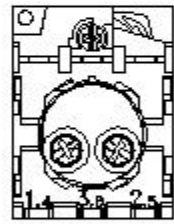
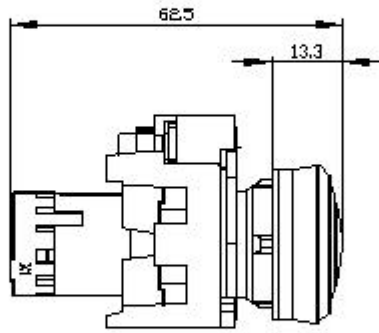
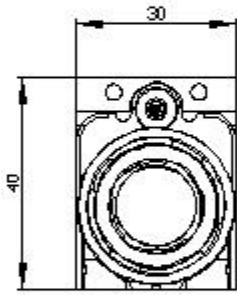
<http://support.automation.siemens.com/WW/CAXorder/default.aspx?lang=en&mlfb=3SU1250-6KB10-1AA0>

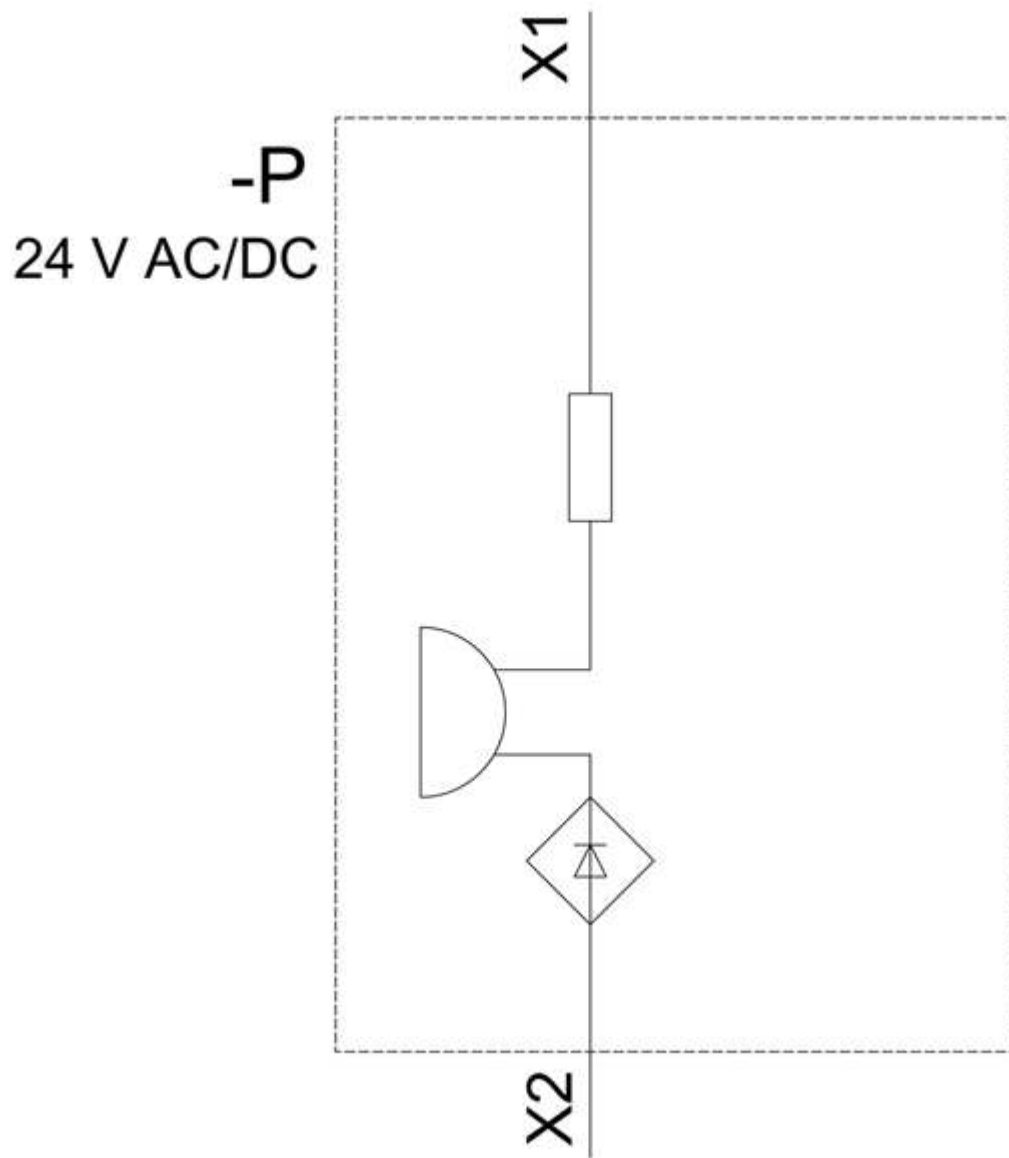
Service&Support (Manuals, Certificates, Characteristics, FAQs,...)

<https://support.industry.siemens.com/cs/ww/en/ps/3SU1250-6KB10-1AA0>

Image database (product images, 2D dimension drawings, 3D models, device circuit diagrams, EPLAN macros, ...)

http://www.automation.siemens.com/bilddb/cax_de.aspx?mlfb=3SU1250-6KB10-1AA0&lang=en





last modified:

12/15/2020 