

5

4

3

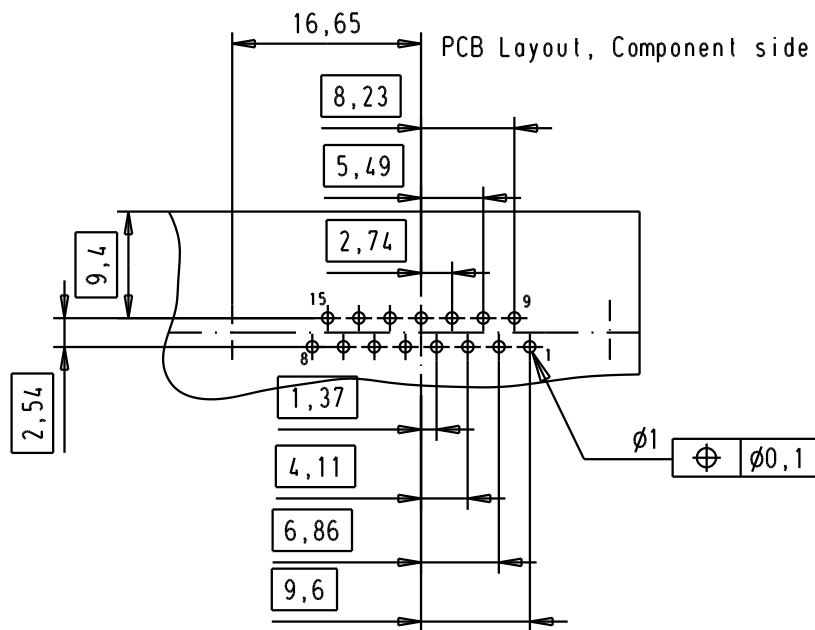
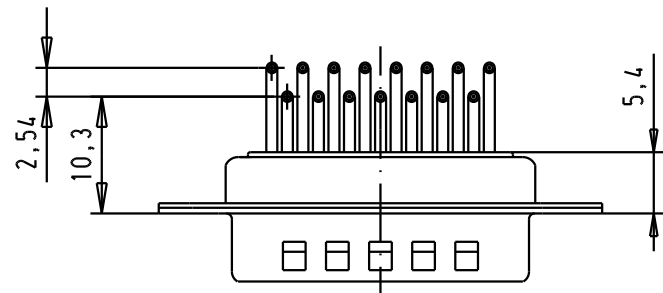
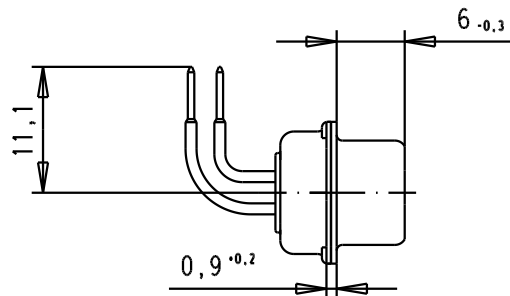
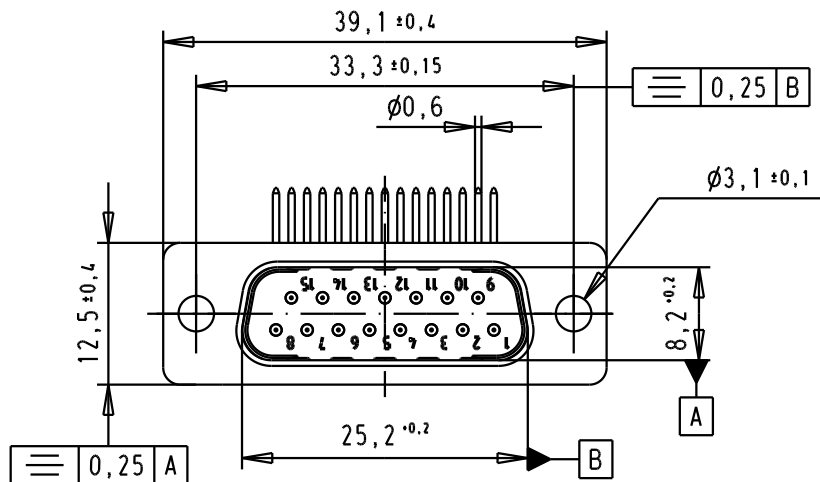
2



1

SPECIFICATION

Mating Cycles	500
Filter type	C
Capacitance	47pF±20%
Working Voltage	100v
Current Rating	7,5A
Insulation Resistance	>1GΩ

FREQUENCY (MHz)	ATTENUATION dB
5	-
10	-
50	-
100	-
500	30dB
1000	35dB



						 All Dim. in mm Orig. Size DIN A 4	D-Sub, male, angled, 15 Poles, turned solder pins, tin plated shell with dimples and holes	Me?Ms Lab/ Scale 1.5:1
			Detail.	8- JUL -02	CV			
			Insp.					
			Stand.					
33269	22/11/05	JMDR	HARTING EURL F-95972 Paris				TB 09642247210	Blatt / Page 1 / 1
31058	8- JUL -02	CV						

D

C

B

A