

PART NUMBER	REV	FIRST USED	TERMINATOR	FEED TYPE	DESCRIPTION
1528240-1	B	-	LEADMAKER	MECH POST FEED	CUTS CARRIER
1528240-2	B	-	BENCH	MECH PRE FEED	CUTS CARRIER
1528240-6	B	-	LEADMAKER	MECH POST FEED	CONTINUOUS CARRIER
7- 1528240-1	B	-	LEADMAKER	MECH POST FEED	-1 AND SPARE PARTS
7- 1528240-2	B	-	BENCH	MECH PRE FEED	-2 AND SPARE PARTS
7- 1528240-6	B	-	LEADMAKER	MECH POST FEED	-6 AND SPARE PARTS
7- 1528240-7	A	-	-	-	SPARE PARTS KIT

CRIMP DATA AMP TERMINAL AMP CRIMP SPECS
 TERMINAL NAME: 025 RECEPTACLE CONTACT

CRIMP	SIZE	TYPE	RANGE
WIRE	1.40 [.055 IN]	F	0.22 - 0.50mm ²
INSUL	1.40 [.055 IN]	F	1.10-1.70 [.043-.067 IN]

WIRE STRIP LENGTH 3.00-3.50 [.118-.138 IN] APPL INSTRUCTION 408-8322 & 408-8490

TERMINAL	FEED
APPL SPEC 114-5250	7.50 [.295 IN]

TERMINALS APPLIED

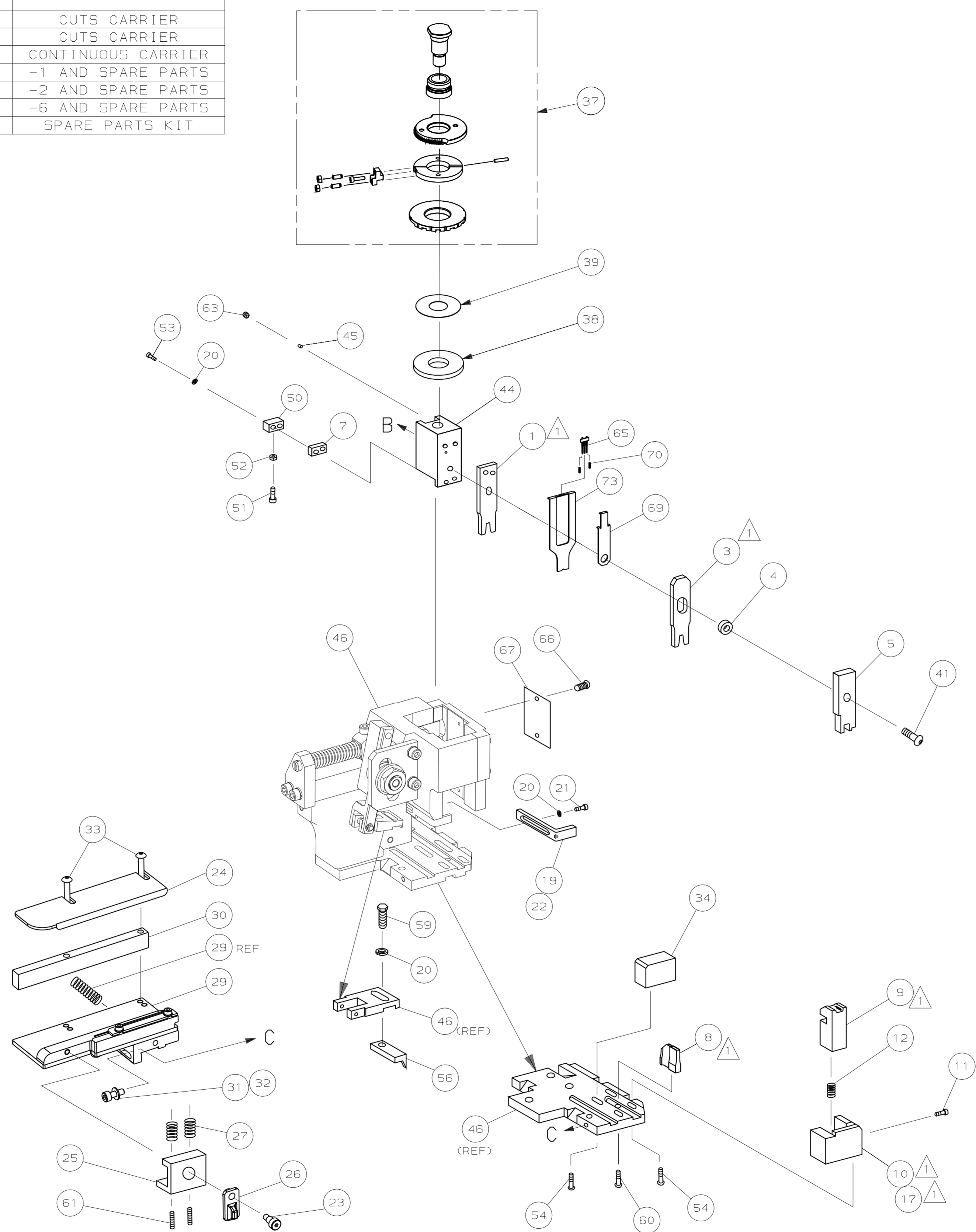
1123343	-	-	-	-
-	-	-	-	-
-	-	-	-	-
-	-	-	-	-
-	-	-	-	-
-	-	-	-	-
-	-	-	-	-
-	-	-	-	-
-	-	-	-	-
-	-	-	-	-

WIRE SIZE	CRIMP HEIGHT	REF SETTING
0.50mm ²	1.06 ±0.05 [.042 ±.002 IN]	C5
0.30mm ²	0.96 ±0.05 [.038 ±.002 IN]	D1
0.22mm ²	0.84 ±0.05 [.033 ±.002 IN]	D9

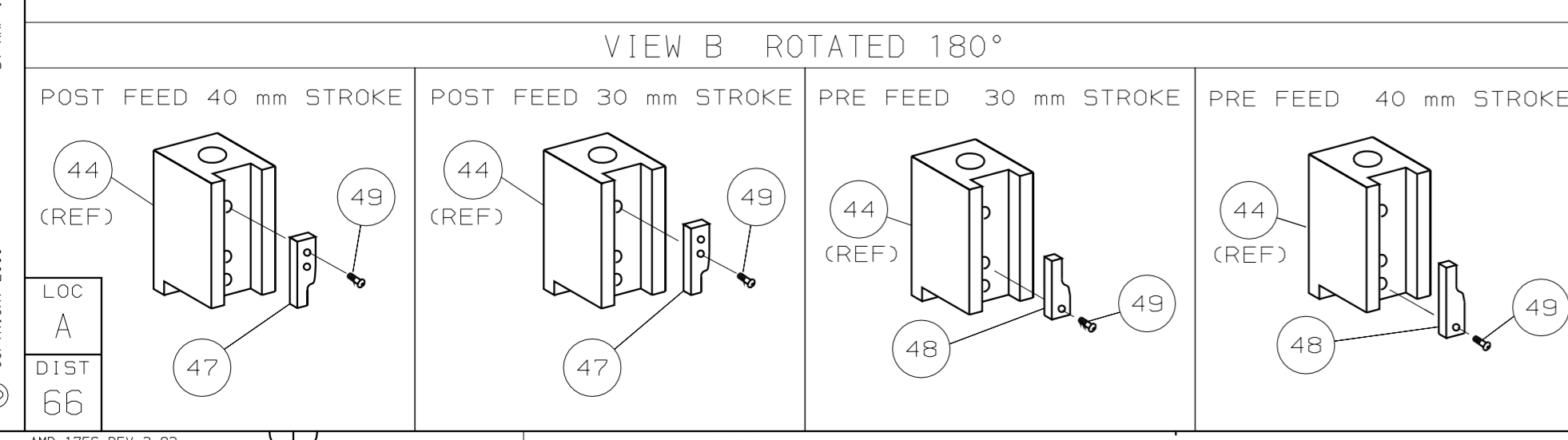
THIS DRAWING IS A CONTROLLED DOCUMENT.

LAYOUT L1426125
SET UP GAGE 458637-3

2000
RELEASED FOR PUBLICATION
BY AMP INCORPORATED. ALL RIGHTS RESERVED.
THIS DRAWING IS UNPUBLISHED.
© COPYRIGHT 2000
AMP 1756 REV 3-92



- ⚠ RECOMMENDED SPARE PARTS.
- 2. GREASE RAM, CAM, CAM FOLLOWER AND FEED ROD LIGHTLY.
- 3. LUBRICATE DAILY PER THE APPLICATOR INSTRUCTION SHEET SUPPLIED WITH THE APPLICATOR.
- 4. APPLICATION SPECIFICATION 114-5250 HAS AN INSULATION HEIGHT REQUIREMENT.



*** WARNING:**
 ON INSTALLATION, SET WIRE DISC TO LARGEST WIRE SIZE SETTING. USE OF SETTINGS BELOW MIN REQUIRED CRIMP HEIGHT SETTING WILL CAUSE DAMAGE TO CRIMP TOOLING.

QTY	REQD	PER	ASSY	PART NO	DESCRIPTION	ITEM NO				
-	1	1	1	1	1	1	1490525-3	DEPRESSOR, WIRE	73	
-	1	1	1	1	1	1	1528240	PRINT, APPLICATOR LOG SHEET	72	
-	1	1	1	1	1	1	1338705-3	DOCUMENTATION PACKAGE	71	
-	2	2	2	2	2	2	23147-7	SPRING, DEPRESSOR	70	
-	1	1	1	1	1	1	1490524-1	SPACER, DEPRESSOR	69	
-	1	1	1	1	1	1	461264-5	PLATE, IDENTIFICATION	67	
-	2	2	2	2	2	2	21017-2	SCR,DRIVE (#2x.19) ID PLATE	66	
-	1	1	1	1	1	1	1424350-1	HOLDER, PIN, WIRED	65	
-	1	1	1	1	1	1	3-18031-0	SCR,SKT SET (M6X6) RAM	64	
-	2	2	2	2	2	2	2-18032-5	SCR,SET (M5X20) DRAG	63	
-	1	1	1	1	1	1	18024-7	SCR,BHC (M4X10) ANVIL	62	
-	1	1	1	1	1	1	5-18022-2	SCR,HEX (M4X8) FEED FINGER	61	
-	1	1	1	1	1	1	1338685-1	PAWL, FEED	58	
-	4	4	4	4	4	4	18024-8	SCR,BHC (M4X12) SHEAR HOLDER	55	
-	2	2	2	2	2	2	9-18023-6	SCR,SHC (M4X14) TERM HLD DWN	54	
-	1	1	1	1	1	1	18030-1	NUT,HEX (M3) HOLD DOWN	53	
-	1	1	1	1	1	1	811242-5	BUMPER, HOLDDOWN	52	
-	1	1	1	1	1	1	690753-2	SPACER, TONKER	51	
-	1	1	1	1	1	1	18024-3	SCR,BHC (M3X10) CAM	50	
-	-	-	-	-	-	-	1338675-1	CAM, PRE FEED 30 & 40 mm ST	48	
-	1	-	-	-	-	-	1338676-1	CAM, POST FEED 30 & 40 mm ST	47	
-	1	1	1	1	1	1	1320999-3	APPLICATOR BASIC SUBASSY	46	
-	1	1	1	1	1	1	690191-1	PLUG, NYLON	45	
-	1	1	1	1	1	1	1338660-3	RAM	44	
-	1	1	1	1	1	1	2-18024-6	SCR,BHC (M8X25) RAM	41	
-	1	1	1	1	1	1	690125-1	SHIM SUBASSY	39	
-	1	1	1	1	1	1	469367-9	SPACER, FINE ADJUST	38	
-	1	1	1	1	1	1	879103-3	FINE ADJUST HEAD SUBASSY	37	
-	1	1	1	1	1	1	1320934-6	SUPPORT, TERMINAL	34	
-	2	2	2	2	2	2	1-18024-0	SCR,BHC (M4X20) STRIP GUIDE	33	
-	1	1	1	1	1	1	18027-2	WASHER, FLAT (M4)	32	
-	1	1	1	1	1	1	1-18023-2	SCR,SKT CAP (M4X12) MOUNT BLOCK	31	
-	1	1	1	1	1	1	1320908-4	SPACER, STRIP GUIDE	30	
-	1	1	1	1	1	1	1633073-1	STRIP GUIDE PLATE ASSY	29	
-	2	2	2	2	2	2	1-22284-0	SPRING, DRAG	28	
-	1	1	1	1	1	1	356835-1	LEVER, DRAG RELEASE	27	
-	1	1	1	1	1	1	240792-1	DRAG, TERMINAL	26	
-	1	1	1	1	1	1	1320928-1	PLATE, STRIP GUIDE	25	
-	1	1	1	1	1	1	980371-4	SCR,SHC SHLD	24	
-	1	-	1	-	-	-	690472-2	STRIPPER	23	
-	1	1	1	1	1	1	1-18023-1	SCR,SHC (M4X10) STRIPPER	22	
-	4	4	4	4	4	4	18025-2	WASHER, LOCK (M4) STRIPPER	21	
-	-	1	-	-	-	-	690472-1	STRIPPER	20	
-	1	-	-	-	-	-	1338684-1	HOLDER, SHEAR, FRONT (NO-CUT)	17	
-	1	1	1	1	1	1	5-22280-0	SPRING, SHEAR	16	
-	1	1	1	1	1	1	356885-4	STOP, SHEAR	15	
-	-	1	-	-	-	-	1320921-1	HOLDER, SHEAR, FRONT (CUT)	14	
-	1	1	1	1	1	1	409284-2	SHEAR, FLOAT (FRONT)	13	
-	1	2	2	2	1	1	1-1333201-2	ANVIL	12	
-	1	1	1	1	1	1	240641-2	SPACER, DEPRESSOR (REAR)	11	
-	1	1	1	1	1	1	2-455889-0	DEPRESSOR, SHEAR (FRONT)	10	
-	1	1	1	1	1	1	238011-7	SPACER, BLOCK CRIMPER	9	
-	1	2	2	2	1	1	1366753-1	CRIMPER, INSULATION	8	
-	1	2	2	2	1	1	1-456402-7	CRIMPER, WIRE	7	
-	77	-76	-72	-71	-6	-2	-1	PART NO	DESCRIPTION	ITEM NO

PARTS LIST

QTY	REQD	PER	ASSY	MATL	HT	TR	FIN
-	-	-	-	-	-	-	-

DIMENSIONS: mm [INCHES] MATL
 DO NOT SCALE PRINT.
 TOLERANCES UNLESS OTHERWISE SPECIFIED:
 1 PLC DEC ±0.5 [.02 IN]
 2 PLC DEC ±
 3 PLC DEC ±
 ANGLES ±
 SURF TEXTURE: ✓
 REMOVE BURRS, BREAK SHARP EDGES RO.38 MAX

DR M.CLIFFORD 15SEP05
 CHK - REL 16SEP05
 M.CLIFFORD

AMP Incorporated Harrisburg, PA 17105-3608

NAME FINE ADJ SIDE FD HD-I APPL MACHINE REF HD-I APPL

SCALE - DWG NO 1528240 SHEET 1 OF 1 REV B

CAGE CODE 00779 CUSTOMER AND ASSEMBLY DRAWING