

# Customer Information Sheet

DRAWING No.: M60-614XX45

SHEET 2 OF 2

IF IN DOUBT - ASK

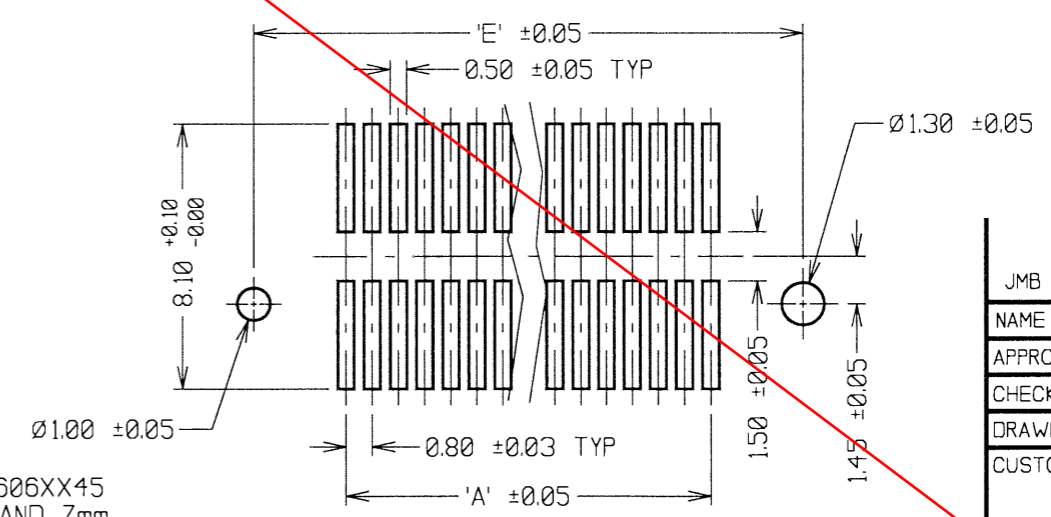
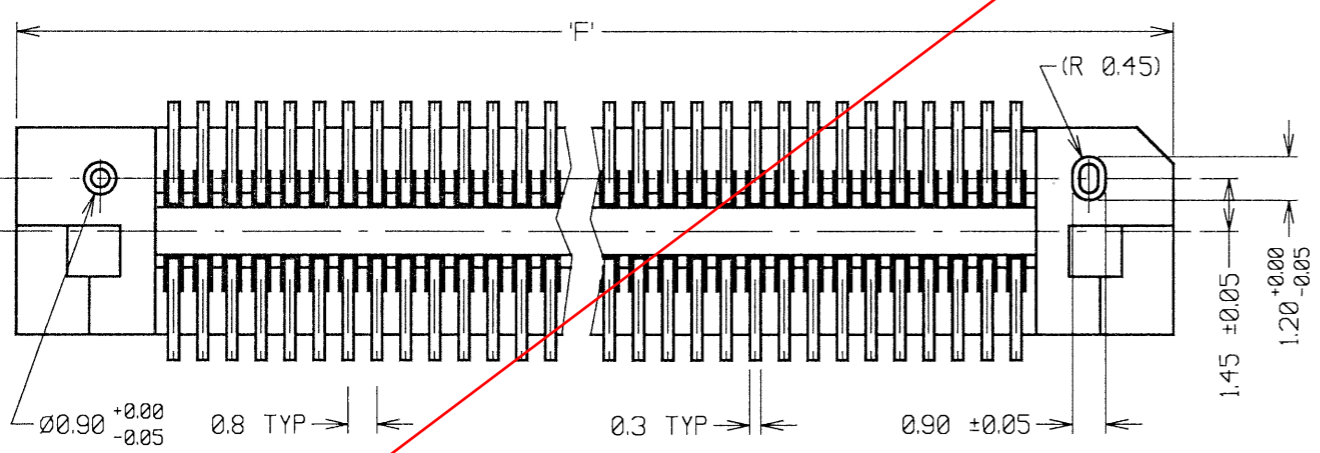
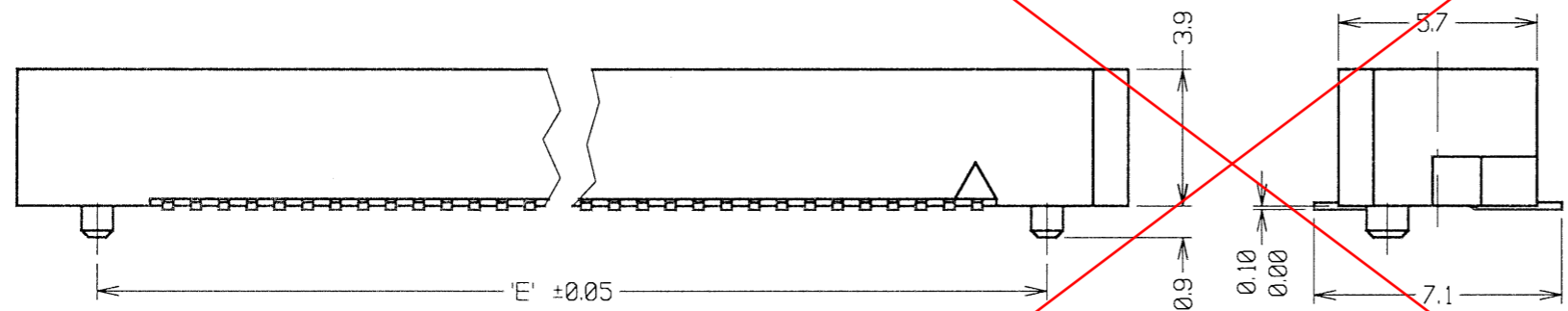
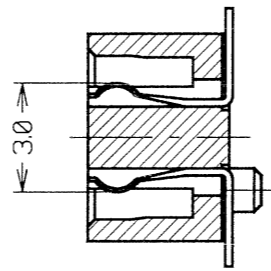
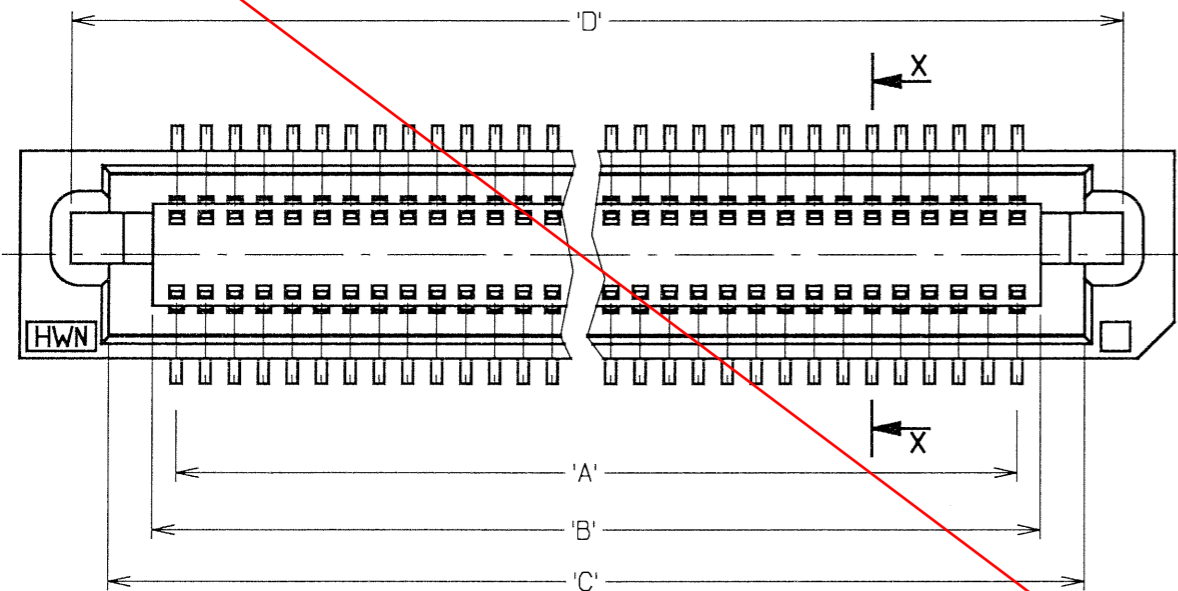
©

NOT TO SCALE

THIRD ANGLE PROJECTION

ALL DIMENSIONS IN mm

**OBSOLETE**



PART No.	No. OF CONTACTS	'A'	'B'	'C'	'D'	'E'	'F'
M60-6141045	10 + 10	7.2	8.5	10.9	13.0	11.2	15.8
M60-6141545	15 + 15	11.2	12.5	14.9	17.0	15.2	19.8
M60-6142045	20 + 20	15.2	16.5	18.9	21.0	19.2	23.8
M60-6142545	25 + 25	19.2	20.5	22.9	25.0	23.2	27.8
M60-6143045	30 + 30	23.2	24.5	26.9	29.0	27.2	31.8
M60-6144045	40 + 40	31.2	32.5	34.9	37.0	35.2	39.8
M60-6145045	50 + 50	39.2	40.5	42.9	45.0	43.2	47.8

**SPECIFICATIONS:**

**MATERIAL:**

MOULDING = LCP, UL94V-0  
CONTACTS = PHOSPHOR BRONZE

**FINISH:**

CONTACTS:  
0.05µ MIN GOLD OVER 1.27µ MIN NICKEL  
0.5µ MIN GOLD ON CONTACT AREA.

**ELECTRICAL:**

CURRENT RATING = 0.5 AMPS  
VOLTAGE RATING = 100V AC  
DIELECTRIC WITHSTANDING VOLTAGE = 300V AC (1 MINUTE)  
INSULATION RESISTANCE = 1000 MEGOHMS MIN (250V DC)  
CONTACT RESISTANCE = 40 MILLIOHMS MAX

**MECHANICAL:**

DURABILITY = 30 CYCLES

**ENVIRONMENTAL:**

TEMPERATURE RANGE = -55°C TO +100°C  
PACKING = TUBE

**NOTES:**

- MATES WITH M60-604XX45, M60-605XX45 OR M60-606XX45 TO GIVE BOARD-TO-BOARD HEIGHTS OF 5mm, 6mm AND 7mm RESPECTIVELY.
- ALL TOLERANCES ±0.30 UNLESS OTHERWISE STATED.

ORDER CODE:

**M60-614XX45**

No. OF CONTACTS

10, 15, 20, 25, 30, 40, 50

**HARWIN**

HARWIN USA  
TEL: 603 893 5376  
FAX: 603 893 5396  
mis@harwin.com

HARWIN Europe (UK)  
TEL: 023 9231 4545  
FAX: 023 9231 4590  
mis@harwin.co.uk

HARWIN Asia  
TEL: +65 6 779 4909  
FAX: +65 6 779 3868  
mis@harwin.com.sg

THIS DRAWING AND ANY INFORMATION OR DESCRIPTIVE MATTER SET OUT HEREON ARE CONFIDENTIAL AND COPYRIGHT PROPERTY OF THE HARWIN GROUP AND MUST NOT BE DISCLOSED, LOANED, COPIED OR USED FOR MANUFACTURING, TENDERING OR FOR ANY OTHER PURPOSE WITHOUT THEIR WRITTEN PERMISSION.

**TOLERANCES**  
X. = ±1mm  
X.X = ±0.25mm  
X.XX = ±0.10mm  
X.XXX = ±0.01mm  
ANGLES = ±5°  
UNLESS STATED

**MATERIAL:**

SEE ABOVE

**FINISH:** SEE ABOVE

**S/AREA:**

mm<sup>2</sup>

**TITLE:**

0.80mm PITCH SMT PLUG CONNECTOR (4mm HIGH)

**DRAWING NUMBER:**

**M60-614XX45**

JMB	9	17.07.06	9324
NAME	ISS.	DATE	C/NOTE
APPROVED: <i>[Signature]</i>			
CHECKED: <i>[Signature]</i>			
DRAWN: WJ BOURNE			
CUSTOMER REF.:			
ASSEMBLY DRG:			

SHT 2 OF 2