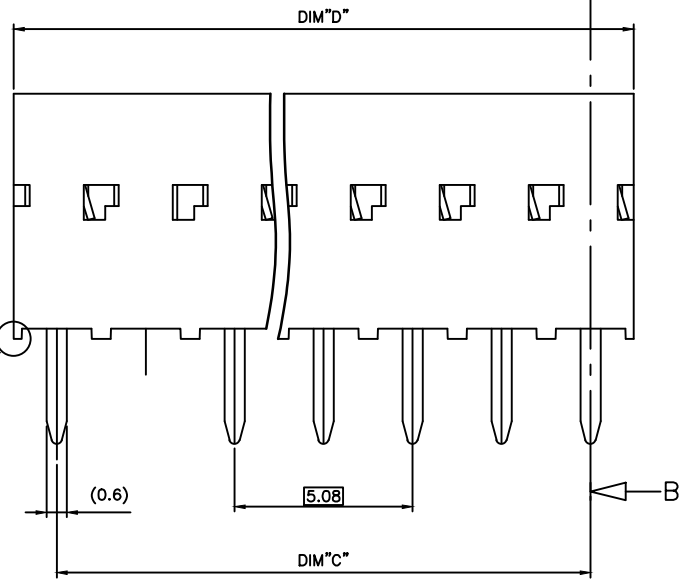
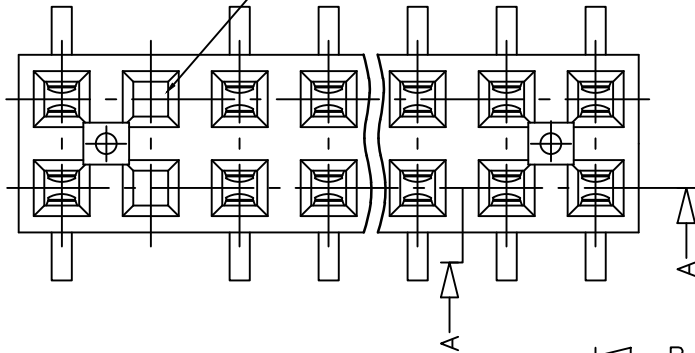


PRODUCT NB	DIM"C" & DIM"D"
95264-YXX(H)LF	SEE SHEET 2/2

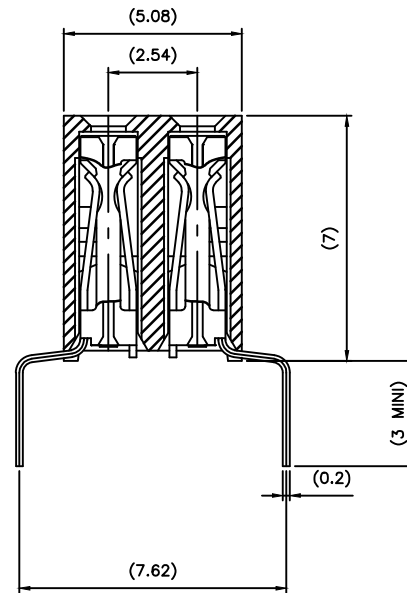
RoHS COMPATIBLE, SEE NOTE 5

EXAMPLE MISSING TERMINAL



SECTION A-A

(SEE NOTE 4)



SECTION B-B

NOTES:

- 1 - MATERIAL HOUSING: THERMOPLASTIC POLYESTER, 30% GLASS FILLED, COLOUR BLUE. FLAME RETARDANT PER UL-94 CATEGORY V0.
- 2 - MATERIAL TERMINAL: PHOSPHOR BRONZE EXTRA HARD.
- 3 - MATERIAL HOUSING VERSION HIGH TEMPERATURE: PCT 30% GLASS FILLED, COLOUR GREY. FLAME RETARDANT PER UL-94 CATEGORY V0.
- 4 - THE DASH "H" AT THE END OF THE P/N TO INDICATE A HIGH TEMPERATURE HOUSING.
- 5 - RoHS COMPATIBLE PRODUCT SPECIFICATIONS
 - a - PLATING:
 - "LF" MEANS THE PRODUCT IS LEAD-FREE, 2µm MINIMUM MATTE TIN OVER 1.27µm MINIMUM NICKEL UNDERPLATE.
 - b - MANUFACTURING PROCESS COMPATIBILITY
 - THE HOUSING WILL WITHSTAND EXPOSURE TO 260°C ±5°C SOLDER BATH TEMPERATURE FOR 5 SECONDS IN A WAVE SOLDER APPLICATION WITH A 1.6mm MIN THICK CIRCUIT BOARD.
 - c - LABELING:
 - MEETS PACKAGING SPECS AS PER GS-14-920
 - d - LEGAL STATEMENT: SEE GS-47-0004
- 6 - END STAND-OFFS FOR 2x2 UP TO 2x4 POS
NO END STAND-OFFS FOR 2x5 UP TO 2x50 POS

mat'l. code	surface	tolerance	projection	product family
SEE NOTES	ISO 192	ISO 406	ISO 101	DX VCC DR
ltr	ecn no	dr	date	tolerances unless otherwise specified
R	B-19124	LMU	14.10.21	angles
S	F-24429	AMA	16.07.01	linear
				±0.3
				mm
				scale 10:1
L	F06-0137	DLE	06.02.27	dr
M	F06-0204	DLE	06.06.28	engr
N	F06-0323	DLE	06.11.21	chr
P	F11-0043	JCO	11.02.22	app
				J.M.P.
				96.06.07
sheet	revision	S	J	
index	sheet	1	2	

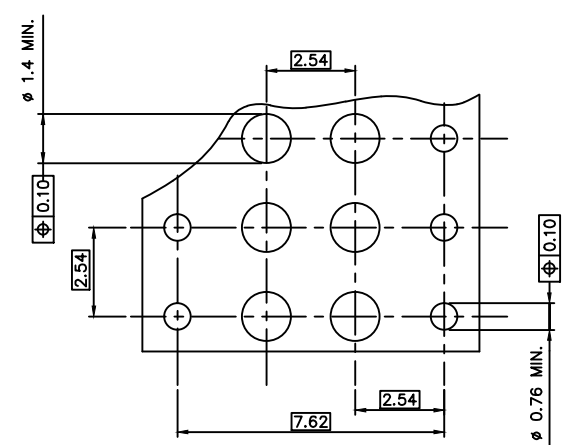
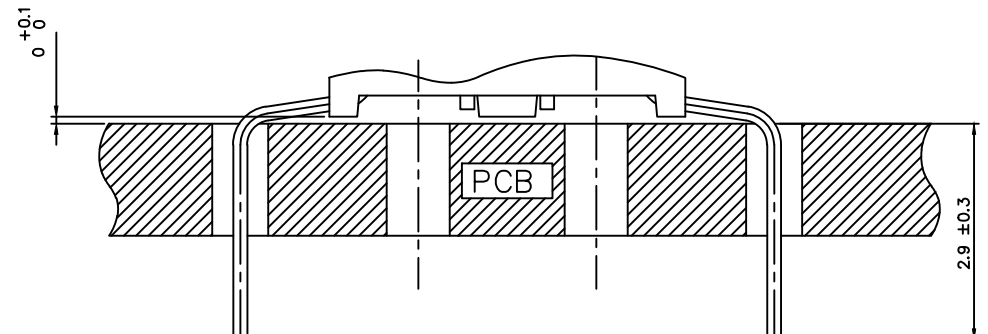
title
SPREADED LEGS
.300 SELECT. LOADED

dwg no
95264

sheet 1 of 2 size
A2

type
CUSTOMER Drawing

PRODUCT N°	NB of POS.	DIM"C"	DIM"D"	CONTACT PLACED IN CAVITY (SEE VIEW "A")																			
				1	2	3	4	5	6	7	8	9	10	11	12	13	14	15	16	17	18	19	20
95264-Y01(H)LF	2x10	22.86	25.32	X	X	X	X	X	X	X	X	X	X										
95264-Y02(H)LF	2x15	35.56	38.02	X	X	X	X	X	X	X	X	X	X	X	X	X	X	X	X	X	X		
95264-Y03(H)LF	2x11	35.56	38.02	X	X	X	X	X	X	X	X	X	X	X	X								
95264-Y04(H)LF	2x10	22.86	25.32	X	X	X	X	X	X	X	X	X	X										
95264-Y05(H)LF	2x4	7.62	10.08	X	X	X	X																
95264-Y06(H)LF	2x5	10.16	12.62	X	X	X	X	X															
95264-Y07(H)LF	2x3	5.08	7.54	X	X	X																	
95264-Y08(H)LF	2x7	15.24	17.7	X	X	X	X	X	X														
95264-Y09(H)LF	2x14	33.02	35.48	X	X	X	X	X	X	X	X	X	X	X	X	X	X	X	X	X	X		
95264-Y10(H)LF	2x20	48.26	50.72	X	X	X	X	X	X	X	X	X	X	X	X	X	X	X	X	X	X		



RECOMMENDED HOLE PATTERN

95264-6XX(H)LF	2µm Au MIN. OVER 1.3µm Ni MIN.	Sn OVER Ni
95264-8XX(H)LF	0.4µm Au MIN. OVER 1.3µm Ni MIN.	Sn OVER Ni
95264-4XX(H)LF	5µm Sn MIN. OVER 1.27µm Ni MIN.	Sn OVER Ni
95264-3XX(H)LF	0.75µm Au MIN. OVER 1.3µm Ni MIN.	Sn OVER Ni
PLATING CODE	CONTACT AREA	SOLDER TAIL
PLATING EXPLANATION		

mat'l. code	surface	tolerance	projection	product family
SEE NOTES	ISO 1902	ISO 406 ISO 101		DX VCC DR
lfr ecn no dr date	tolerances unless otherwise specified	±0.3	mm	title
H F06-0204 DLE 06.06.28	angles	±2°	scale 10:1	SPREADED LEGS
J B-19124 LMU 14.10.21	linear			.300 SELECT. LOADED
D F70829 PNZ 97.09.25 dr P.NIZZI 96.10.23				dwg no
E F80638 VMO 96.10.14 engr JM.PHAMVAN 96.10.23				95264
F F20161 DLE 02.02.25 chr P.NIZZI 96.10.23				sheet 2 of - size
G F04-0347 DLE 04.11.15 app J.M.P 96.10.23				A2
sheet	revision			type
index	sheet			CUSTOMER Drawing