

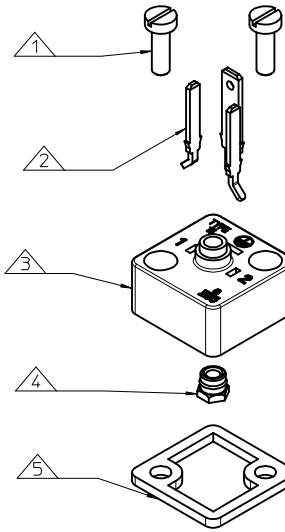
# B152000N2

SERIES \_\_\_\_\_  
 B15= FORM C  
 POLES \_\_\_\_\_  
 2= 2 POLE & 3= 3 POLE  
 CURVED BASE DIAMETER \_\_\_\_\_  
 000= FLAT BOTTOM  
 MATERIAL AND HOUSING COLOUR \_\_\_\_\_  
 N= PA6 BLACK  
 SCREW AND GASKET \_\_\_\_\_  
 2= NBR FLAT GASKET & SCREWS

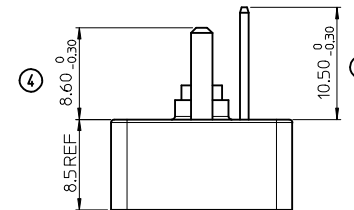
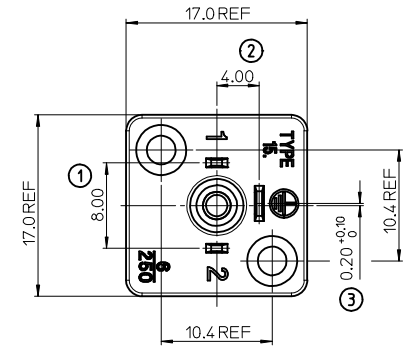
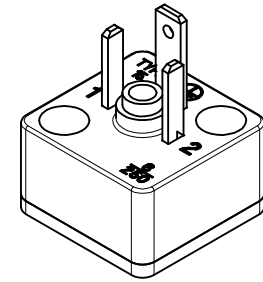
### NOTES

- PLEASE SEE TABLE FOR CURRENTLY CONFIGURED PART NUMBERS.  
 FOR SPECIFIC PART NUMBERS PLEASE CONTACT SALES OR CONSULT  
 THE INTELLIGENT PART NUMBERS IN THE TABLE ATTACHED.
- FOR PACKAGING SEE PACKAGING SPEC PPK-121012-B15
- PRODUCT SPEC: SEE PS-121201-001
- TERMINALS BENT AFTER INSERTION FOR BEND ANGLE SEE TABLE
- 2P+T BASE SHOWN IN DRAWING

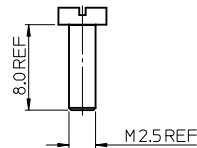
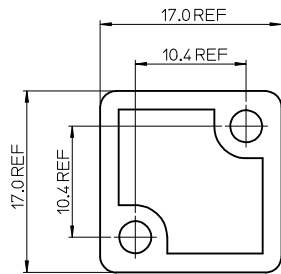
LAST INSPECTION NUMBER 5



ITEM	DESCRIPTION
1	SCREWS
2	TERMINALS
3	HOUSING
4	INSERT
5	GASKET



PART No.	mPm PART No.	DESCRIPTION	TERMINAL BEND ANGLE (°)
1210120009	B152000N2	TYPE C 2P BLACK, NBR FLAT GASKET & SCREWS	45
1210120010	B153000N2	TYPE C 3P BLACK, NBR FLAT GASKET & SCREWS	45



<b>ORIGINAL RELEASE</b> EC NO: IFC2013-1132 2013/01/28 DRWN:DSHEA CHKD:SMGREVY 2013/01/29 APPR:STGRIFFIN 2013/02/08 DESCRIPTION	QUALITY SYMBOLS ▽=0 ▽=0	GENERAL TOLERANCES (UNLESS SPECIFIED) <table border="1"> <thead> <tr> <th></th> <th>mm</th> <th>INCH</th> </tr> </thead> <tbody> <tr> <td>4 PLACES</td> <td>± ---</td> <td>± ---</td> </tr> <tr> <td>3 PLACES</td> <td>± ---</td> <td>± ---</td> </tr> <tr> <td>2 PLACES</td> <td>± 0.10</td> <td>± ---</td> </tr> <tr> <td>1 PLACE</td> <td>± 0.20</td> <td>± ---</td> </tr> </tbody> </table> ANGULAR ± 2 °		mm	INCH	4 PLACES	± ---	± ---	3 PLACES	± ---	± ---	2 PLACES	± 0.10	± ---	1 PLACE	± 0.20	± ---	DIMENSION STYLE <b>MM ONLY</b>	SCALE <b>3:1</b>	DESIGN UNITS <b>METRIC</b>	THIRD ANGLE PROJECTION
		mm	INCH																		
4 PLACES	± ---	± ---																			
3 PLACES	± ---	± ---																			
2 PLACES	± 0.10	± ---																			
1 PLACE	± 0.20	± ---																			
DRAWN BY OSHEA 2013/01/28 CHECKED BY DATE	APPROVED BY STGRIFFIN 2013/02/08 DATE MATERIAL NO.	TITLE <b>B15 SERIES BASES</b>	MOLEX INCORPORATED	DOCUMENT NO. <b>SD-121012-009</b>	SHEET NO. 1 OF 1	THIS DRAWING CONTAINS INFORMATION THAT IS PROPRIETARY TO MOLEX INCORPORATED AND SHOULD NOT BE USED WITHOUT WRITTEN PERMISSION															