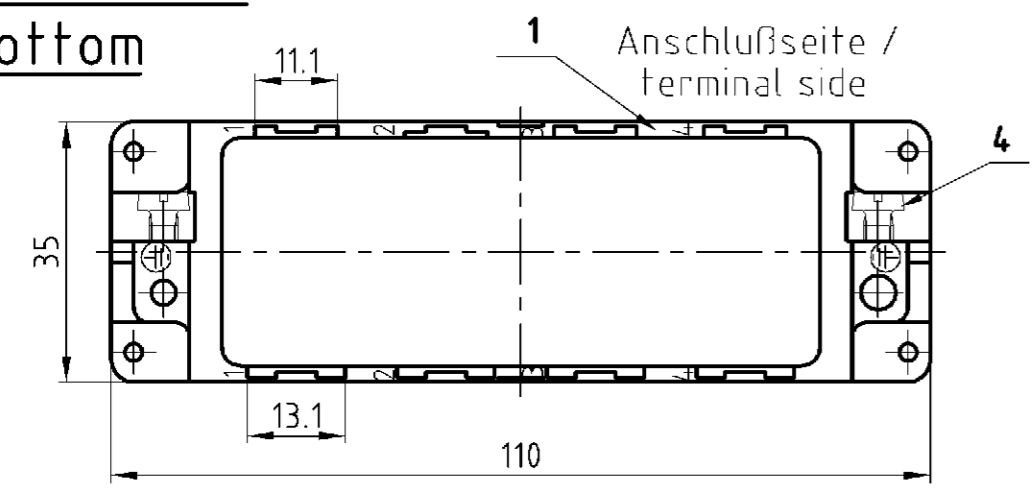
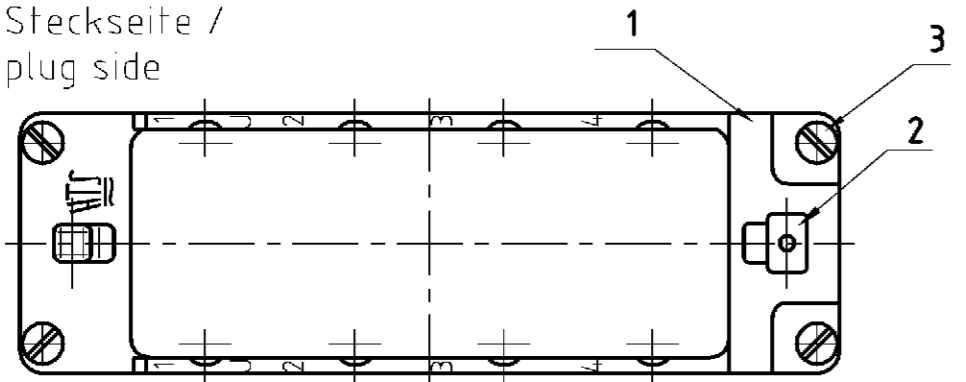


Unterteil / bottom

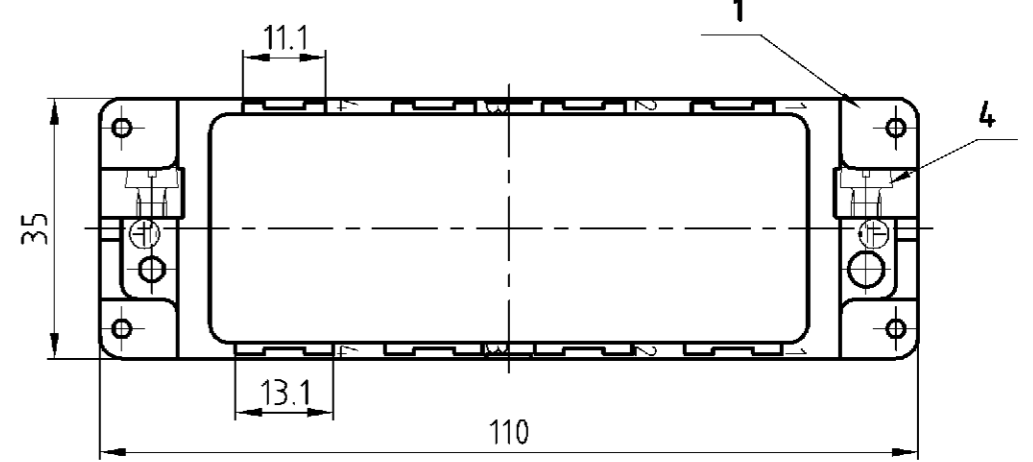


Steckseite / plug side

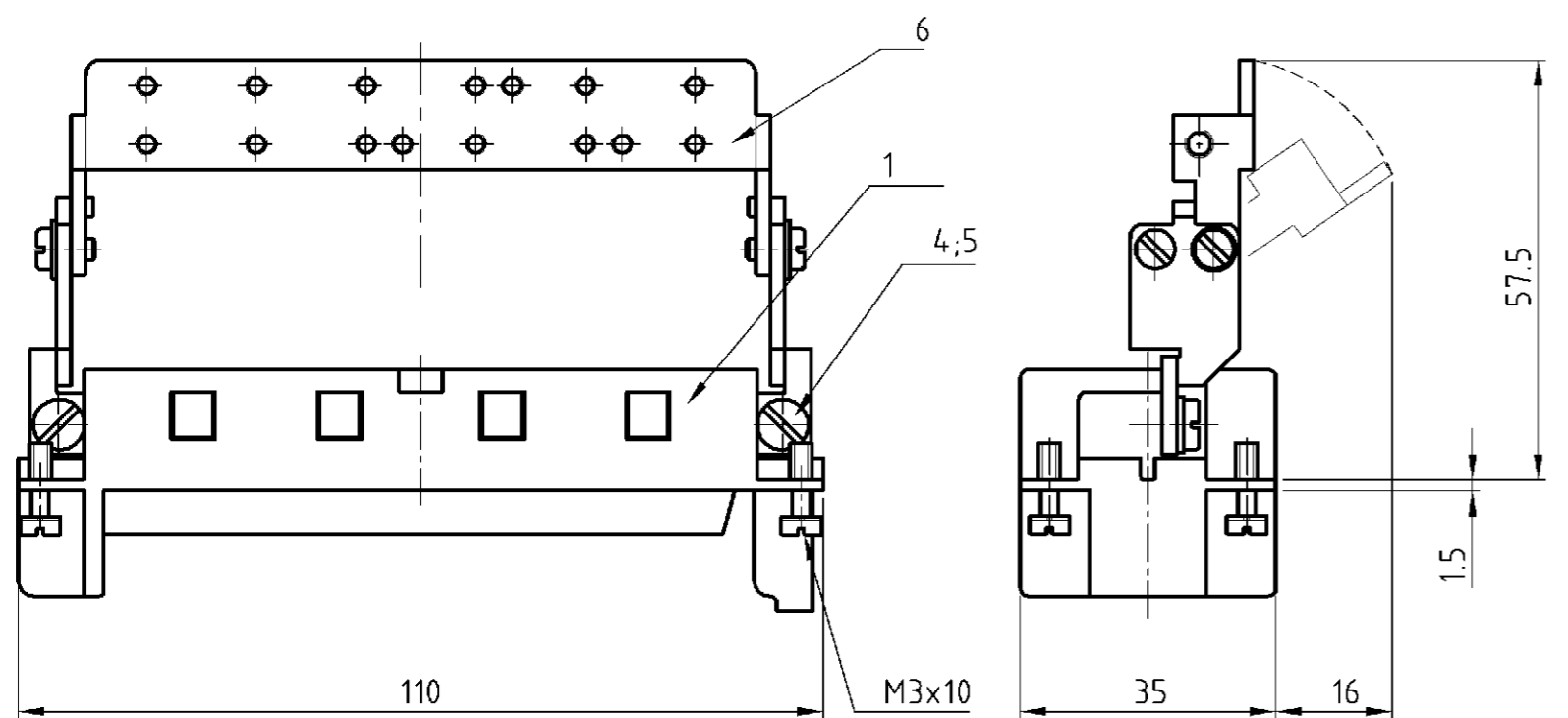
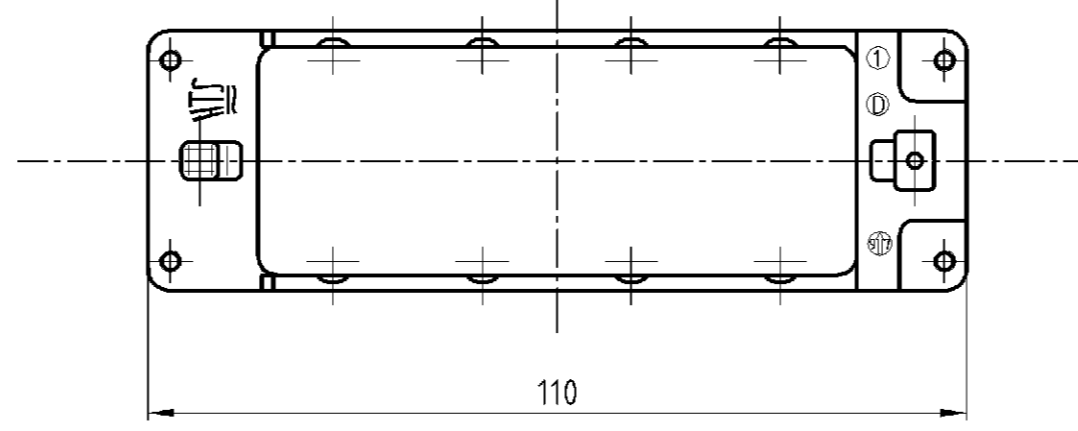
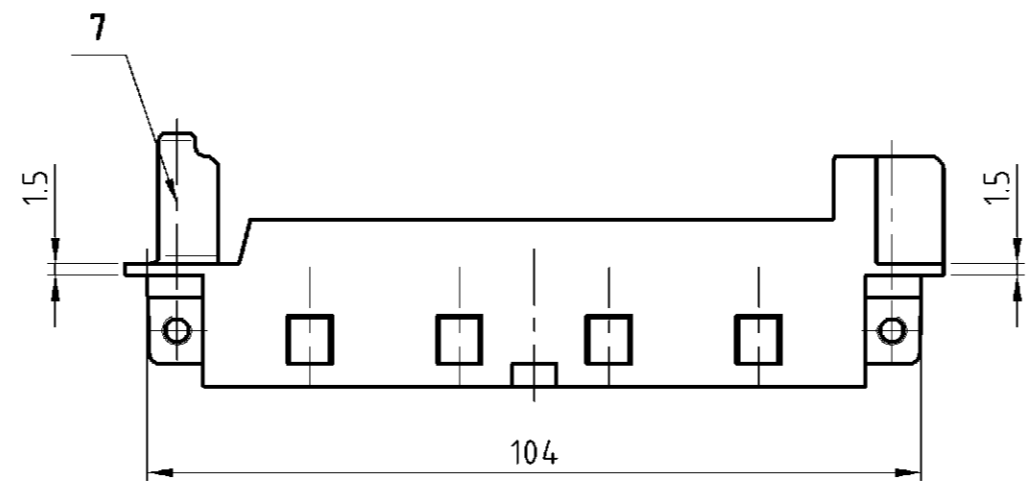
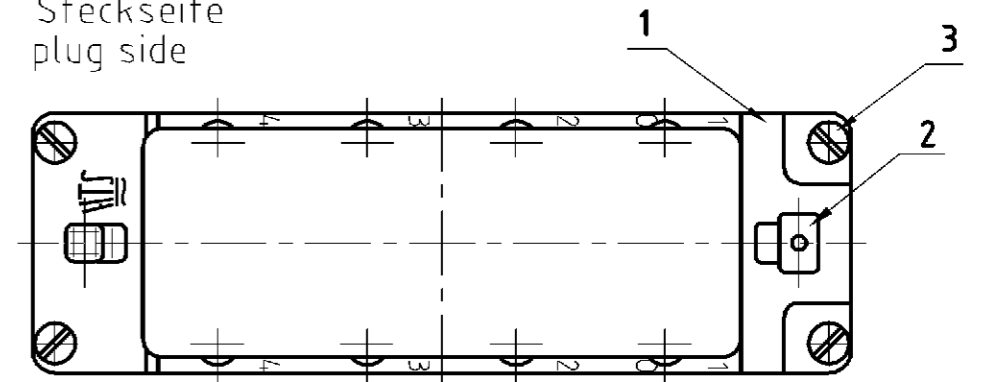


Oberteil / upper part

Anschlußseite terminal side



Steckseite plug side



OBSOLETE						1		2					
			1			Modulrahmen Oberteil / module frame upper part	Zink-Leg. / zinc alloy	Verzinkt / tin plated	7	Sonder für Griffblech / special for grip			
			1	1		Schirmbügel schwenkbar / screen termination roofing	Stahl/steel	Verzinkt / tin plated	6				
			2	2		Federring / spring lock washer	Stahl/steel	Verzinkt / tin plated	5	DIN 128 - A4			
2	2	2	2	2	2	Zylinderschraube mit Schlitz / cylinder screw with slit	Messing/brass	Vernickelt / nickel plated	4	DIN EN ISO 1207			
4	4	4	4	4	4	Befestigungsschraube / fixing screw	Stahl/steel	Vernickelt / nickel plated	3	M3x10			
1	1	1	1	1	1	Erdkontaktfeder / spring f. grounding cont.	Bronze / bronze	Vernickelt / nickel plated	2				
1	1		1	1	1	Modulrahmen / module frame	Zink-Leg. / zinc alloy	Verzinkt / tin plated	1				
0-70-60-50-40-30-20-1						DESCRIPTION / BENENNUNG	MATERIAL	SURFACE/COLOR	ITEM NO. Pos.	NOTES / BEMERKUNGEN			
MDL2-GR-U-8-B5-8	MDL2-GR-O-8-B5-8	MDL2-GR-O-8/GB-B1-4	MDL2-GR-U-8/SB-B1-4	MDL2-GR-O-8/SB-B1-4	MDL2-GR-U-8-B1-4	MDL2-GR-O-8-B1-4	ORDERING TEXT/BESTELTEXT	DIMENSIONS: DIMENSIONEN: mm TOLERANCES UNLESS OTHERWISE SPECIFIED: ALLGEMEINTOLERANZEN p. ISO 8015 r. ISO 2768 - mH - E r. DIN 16901 - 14.0 0 PLC 1 PLC 2 PLC 3 PLC ANGLES / WINKEL ° FINISH / OBERFLÄCHE/FARBE		DWN wroblewski 06.10.2003 CHK Baum 06.10.2003 APVD - PRODUCT SPEC PRODUKTSPEZ - APPLICATION SPEC VERARBEITUNGSSPEZ - WEIGHT GEWICHT 110g, 150g CUSTOMER DRAWING /KUNDENZEICHNUNG		NAME MDL- Frame size 8 MDL- Rahmen Gr.8 SIZE A2 CAGE CODE 00779 DRAWING NO. ZEICHNUNGS-NR. 1108780 RESTRICTED TO NUR FUER - MASSSTAB 1:1 BLATT 1 OF VON 1 REV B3	