

REVISION U

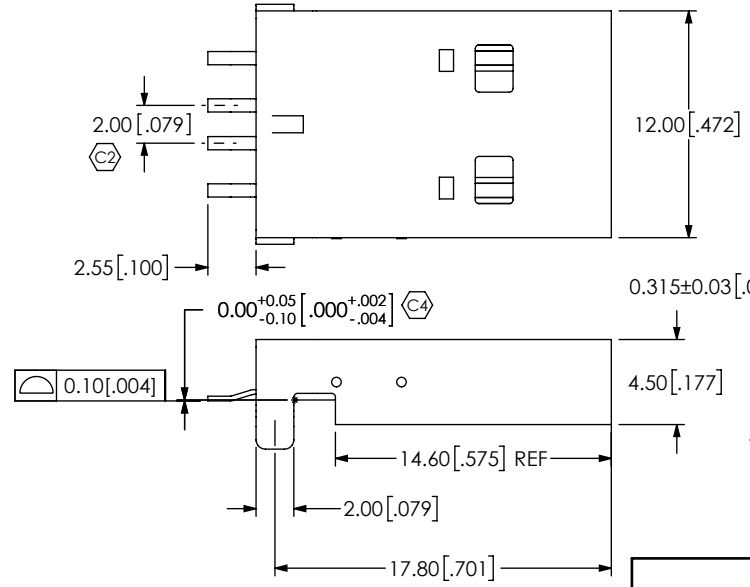
NOTES:

1. $\text{\textcircled{C}}$ REPRESENTS A CRITICAL DIMENSION.
2. DELETED
3. ALL PARTS ARE RoHS COMPLIANT WITH OR WITHOUT -R.
4. TRAYS ARE STANDARD PACKAGING.
5. ORDERS WILL BE PACKAGED ACCORDING TO THE SAMTEC PACKAGING EFFICIENCY STANDARDS (SPES) FOUND ON WWW.SAMTEC.COM.
6. ATTACH LABEL TO EACH REEL.

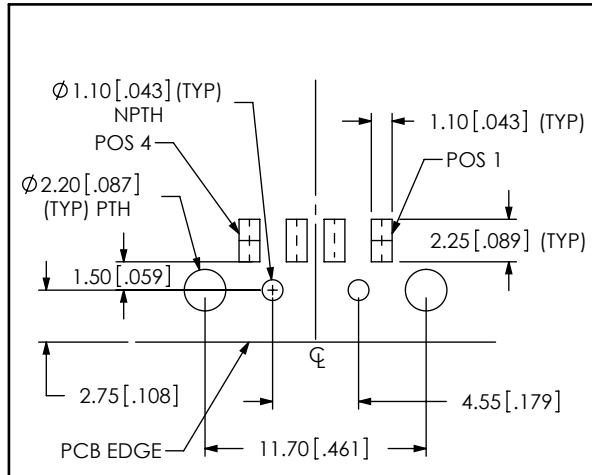
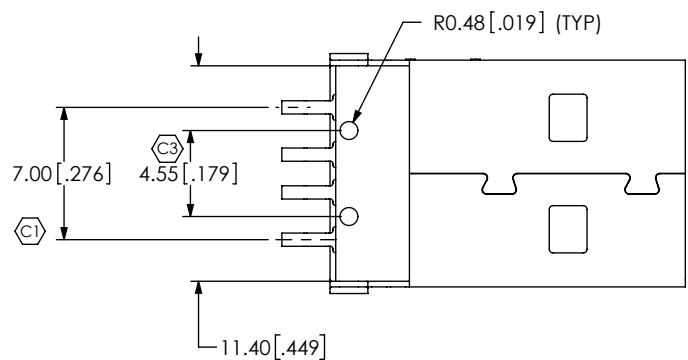
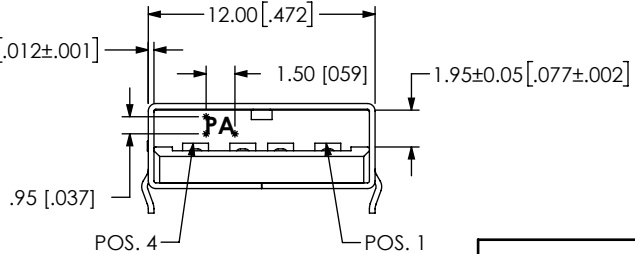
DO NOT SCALE FROM THIS PRINT

USB-AM-S-X-X-SM1-X-XX

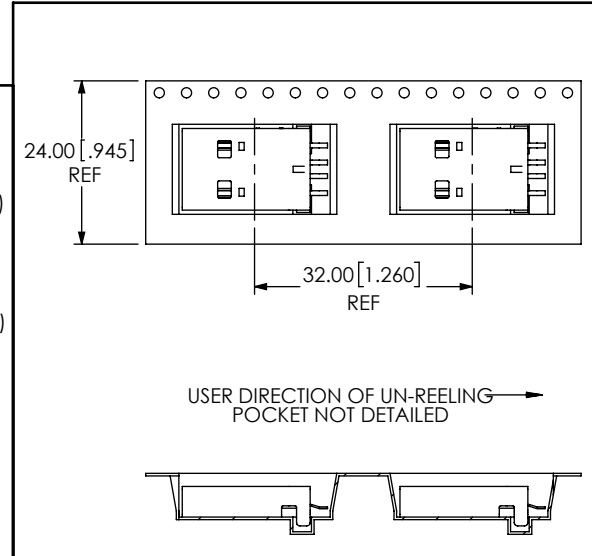
- TYPE
-AM
- CONFIGURATION
-S: SINGLE
- PACKAGING
BLANK: TRAY (SEE NOTES 4 & 5)
-TR: TAPE & REEL (SEE NOTES 5 & 6)
-FR: FULL REEL QTY TAPE & REEL (SEE NOTES 5 & 6)
- EI OPTION
-R: RoHS COMPLIANT
- TERMINATION
-SM SURFACE MOUNT
- COLOR
-B: BLACK
-W: WHITE



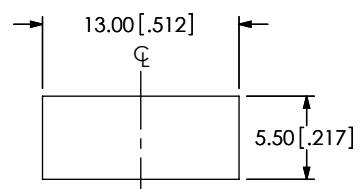
- (C3) PLATING SPECIFICATION
-F: GOLD FLASH ON MATING AREA
BRIGHT ACID TIN ON TAILS (100U" MIN)
WITH NICKEL UNDERPLATE
(SEE NOTE 3 FOR -R OPTION)
-S: SELECTIVE, .000030 GOLD ON MATING AREA
BRIGHT ACID TIN ON TAILS (100U" MIN)
WITH NICKEL UNDERPLATE
(SEE NOTE 3 FOR -R OPTION)



RECOMMENDED PCB LAYOUT



PACKAGING VIEW



SUGGESTED PANEL CUTOUT DIMENSIONS

UNLESS OTHERWISE SPECIFIED, DIMENSIONS ARE IN MM.
TOLERANCES ARE:
DECIMALS ANGLES
.X: ±.3 [.01] 2°
.XX: ±.13 [.005]
.XXX: ±.051 [.0020]

PROPRIETARY NOTE
* THIS DOCUMENT CONTAINS CONFIDENTIAL AND PROPRIETARY INFORMATION AND ALL DESIGN, MANUFACTURING, REPRODUCTION, USE, PATENT RIGHTS AND SALES RIGHTS ARE EXPRESSLY RESERVED BY SAMTEC, INC. THIS DOCUMENT SHALL NOT BE DISCLOSED, IN WHOLE OR PART, TO ANY UNAUTHORIZED PERSON OR ENTITY NOR REPRODUCED, TRANSFERRED OR INCORPORATED IN ANY OTHER PROJECT IN ANY MANNER WITHOUT THE EXPRESS WRITTEN CONSENT OF SAMTEC, INC.

samtec
520 PARK EAST BLVD, NEW ALBANY, IN 47150
PHONE: 812-944-6733 FAX: 812-948-5047
e-Mail: info@SAMTEC.com code: 55322

MATERIAL: DO NOT SCALE DRAWING SHEET SCALE: 2:1
INSULATOR: HIGH TEMP NYLON
CONTACT: PHOS BRONZE

DESCRIPTION:
USB SMT, 4 PIN, TYPE A, SHORT FOOT, 1MM
DWG. NO.

USB-AM-S-X-X-SM1-X-XX
BY: B.HARPENAU 2/06/06 SHEET 1 OF 1