

## Hexagonal locknut

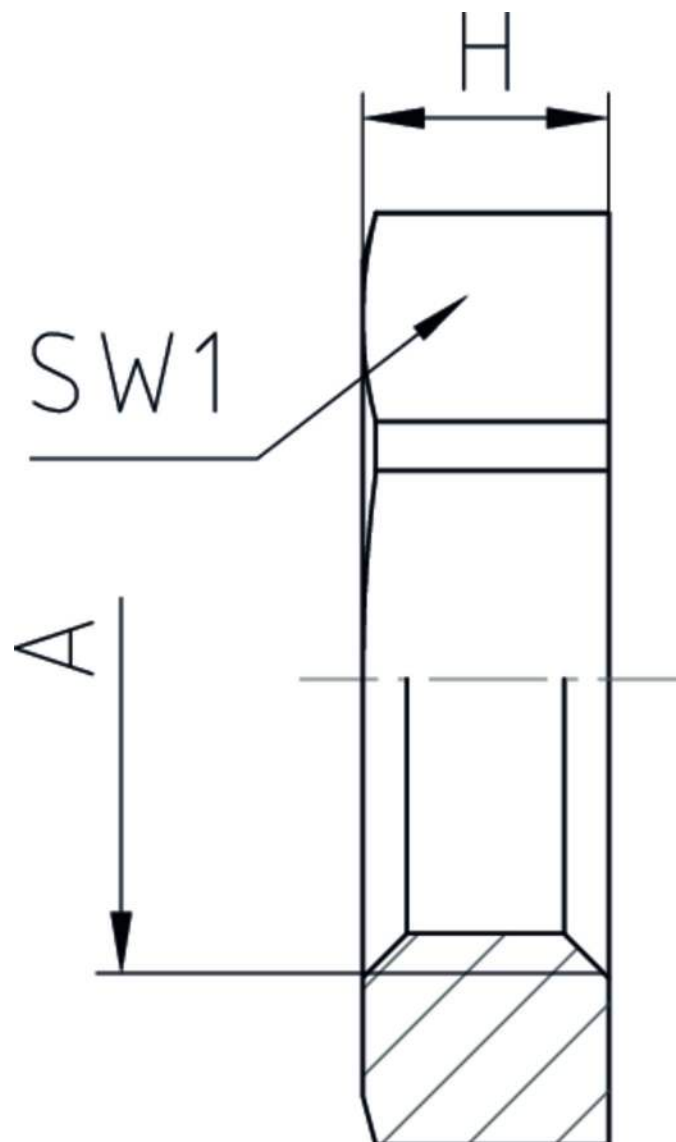
2xx PAzzzz

|                   |                     |
|-------------------|---------------------|
| Hexagonal locknut | Polyamide PA6 GF30  |
| Internal thread   | Pg as per DIN 40430 |

### Properties

|                   |                   |
|-------------------|-------------------|
| Temperature range | -40 °C<br>+100 °C |
|-------------------|-------------------|


- for secure tightening of cable glands and accessories



### Features




RAL 9005

| A       | SW1 | H | <br>VPE | Part No.   |
|---------|-----|---|--|------------|
| Pg 7    | 19  | 5 | 100  | 207 PA/SW  |
| Pg 9    | 22  | 5 | 100  | 209 PA/SW  |
| Pg 11   | 24  | 5 | 100  | 211 PA/SW  |
| Pg 13,5 | 27  | 6 | 100  | 213 PA/SW  |
| Pg 16   | 30  | 6 | 100  | 216 PA/SW  |
| Pg 21   | 36  | 7 | 100  | s221 PA/SW |
| Pg 29   | 46  | 7 | 100  | 229 PA/SW  |
| Pg 36   | 60  | 8 | 50   | 236 PA/SW  |
| Pg 42   | 65  | 8 | 50   | 242 PA/SW  |
| Pg 48   | 70  | 8 | 50   | 248 PA/SW  |



RAL 7035

| A       | SW1 | H | <br>VPE | Part No. |
|---------|-----|---|---|----------|
| Pg 7    | 19  | 5 | 100   | 207 PA   |
| Pg 9    | 22  | 5 | 100   | 209 PA   |
| Pg 11   | 24  | 5 | 100   | 211 PA   |
| Pg 13,5 | 27  | 6 | 100   | 213 PA   |
| Pg 16   | 30  | 6 | 100   | 216 PA   |
| Pg 21   | 36  | 7 | 100   | 221 PA   |
| Pg 29   | 46  | 7 | 100   | 229 PA   |
| Pg 36   | 60  | 8 | 50  | 236 PA   |
| Pg 42   | 65  | 8 | 50  | 242 PA   |
| Pg 48   | 70  | 8 | 50  | 248 PA   |