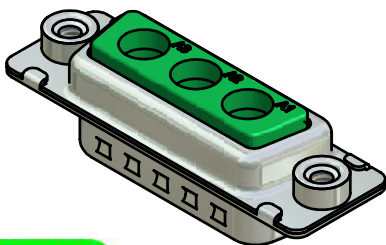
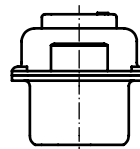
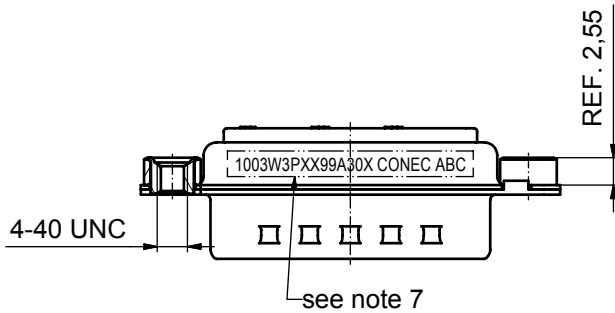
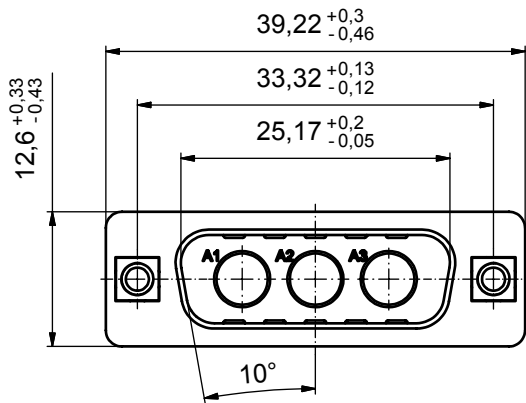
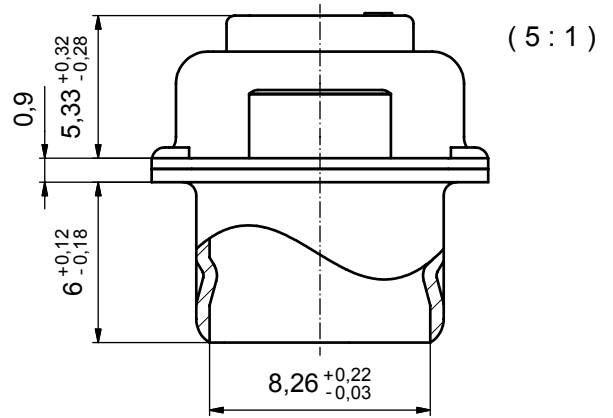


P.C.B. HOLE DRILLINGS



Directive 2002/95 EC
„RoHS“
Compliant

NOTES:

- METALSHELLS: COPPER ALLOY; min. 315µm TIN over 40-80µm NICKEL
- INSULATORS: PBT GF UL 94 V-0; GREEN
- NO CONTACTS ON POS A1-A3
- THREADED INSERT: COPPER ALLOY; min. 200µm TIN over 80µm NICKEL
- COLLAR: COPPER ALLOY; min. 200µm TIN over 80µm NICKEL
- MAXIMUM TORQUE VALUE FOR THREAD: 6 in.LB
- CONNECTOR IS PART MARKED: 1003W3PXX99A30X CONEC ABC

| | |
|---|--------|
| APPROVAL # FREIGABE # DEBLOCAGE # AUTORIZACION # APPROVAL | |
| CUSTOMER APPROVAL DATE: | |
| NAME: | TITLE: |
| COMPANY NAME: | |
| APPROVAL # FREIGABE # DEBLOCAGE # AUTORIZACION # APPROVAL | |

| | | | |
|--|-------------|------|------|
| THIS DRAWING MAY NOT BE COPIED OR REPRODUCED IN ANY WAY, AND MAY NOT BE PASSED ON TO A THIRD PARTY WITHOUT WRITTEN PERMISSION. OWNERSHIP AND COPYRIGHT OF CONEC GmbH | | | |
| DO NOT ALTER CAD DRAWING BY HAND | | | |
| rev. | description | date | name |

| | |
|----------------|-----------------------|
| tolerance | dim. in mm |
| date | name |
| drawn | 18.11.08 Schmidt |
| appd. | 18.11.08 Mickenbecker |
| norm | |
| d-old | |
| CONEC ® | |

| | | |
|------------------------|-----------------|--------|
| scale: | 2:1 (5:1) | |
| material: | see notes | |
| title: | | |
| D-SUB COMBINATION MALE | | |
| 3W3P | | |
| with threaded insert | | |
| dwg no: | Inventor 10 | DIN-A3 |
| 13K1A2684 | | sh: 1 |
| part no: | 1003W3PXX99A30X | |