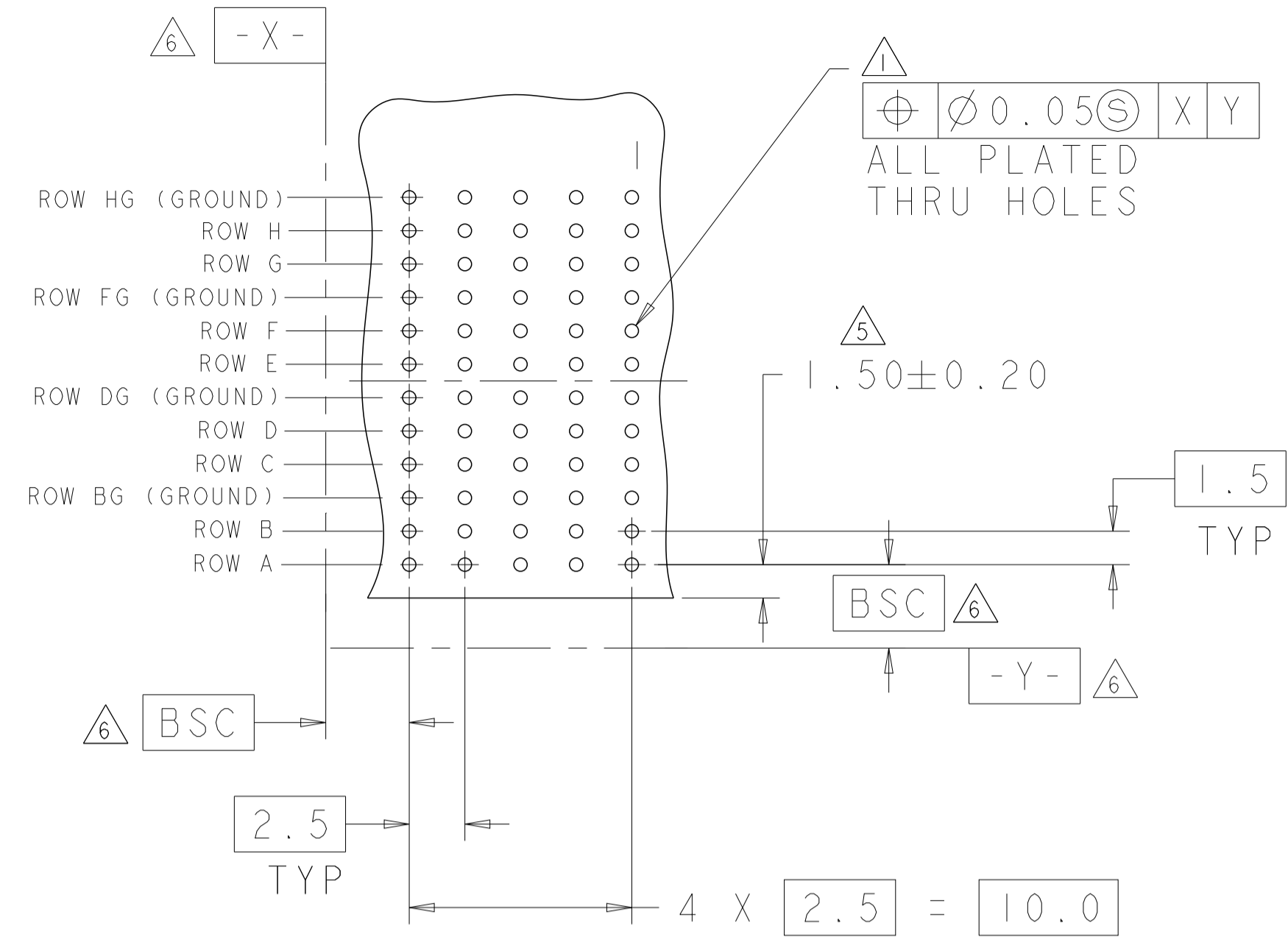
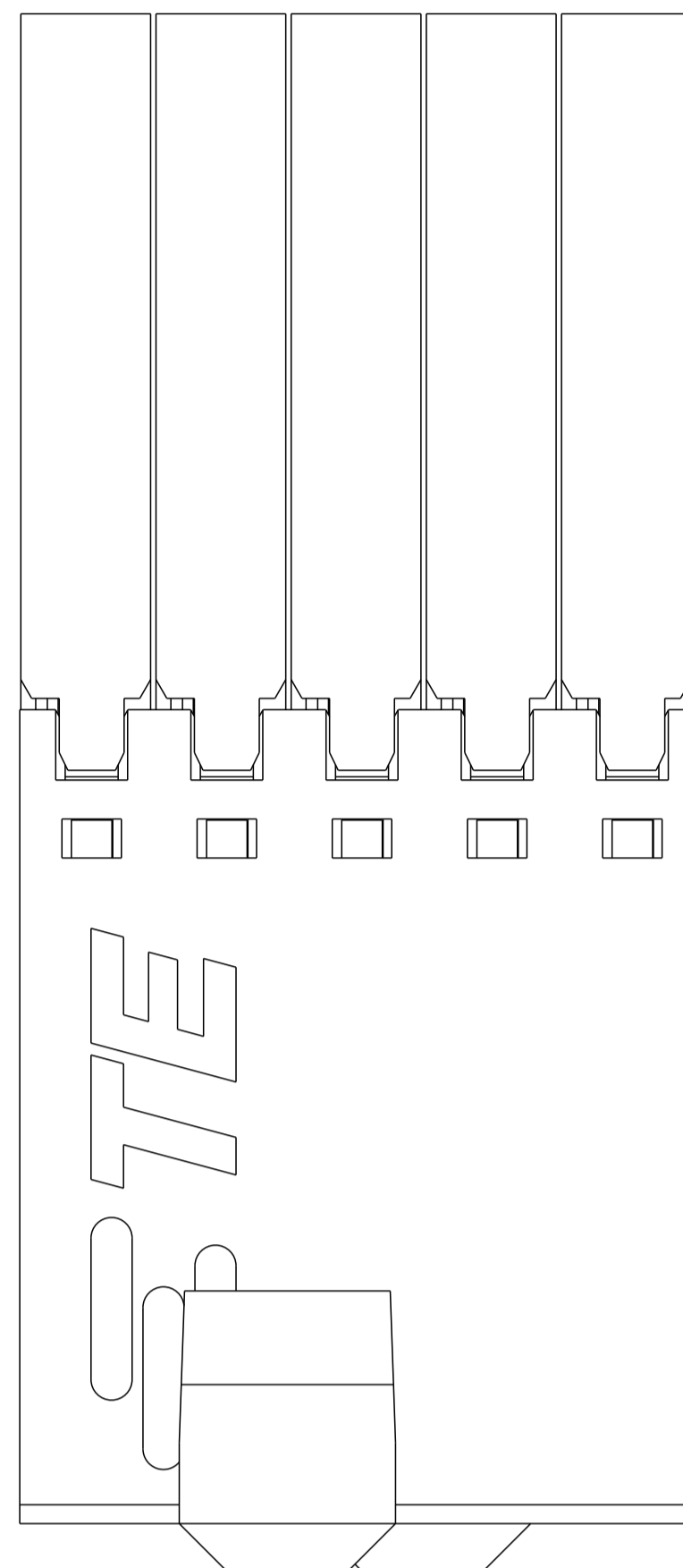
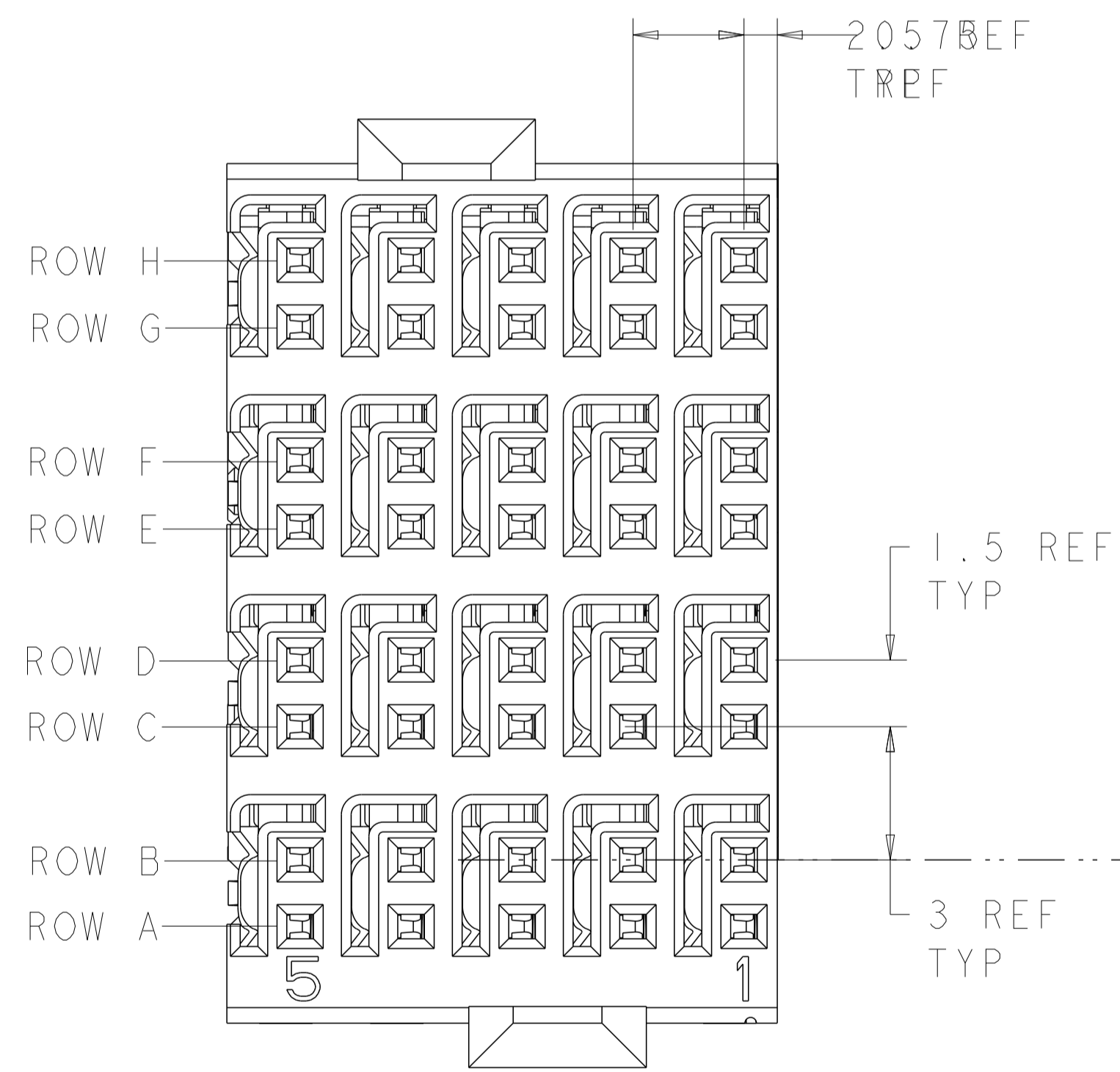


REVISIONS				
P	LTN	DESCRIPTION	DATE	APVD
C		REVISED PER ECO-14-005095	16APR2014	AP RP
D		REVISED PER ECO-16-008845	22SEP2016	AP RP
E		REVISED PER ECO-17-013036	13SEP2017	AP RP

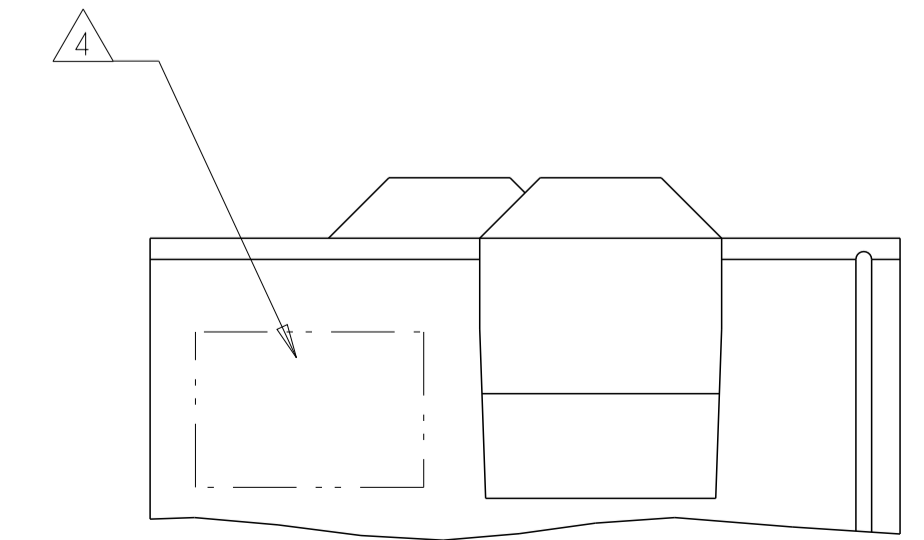
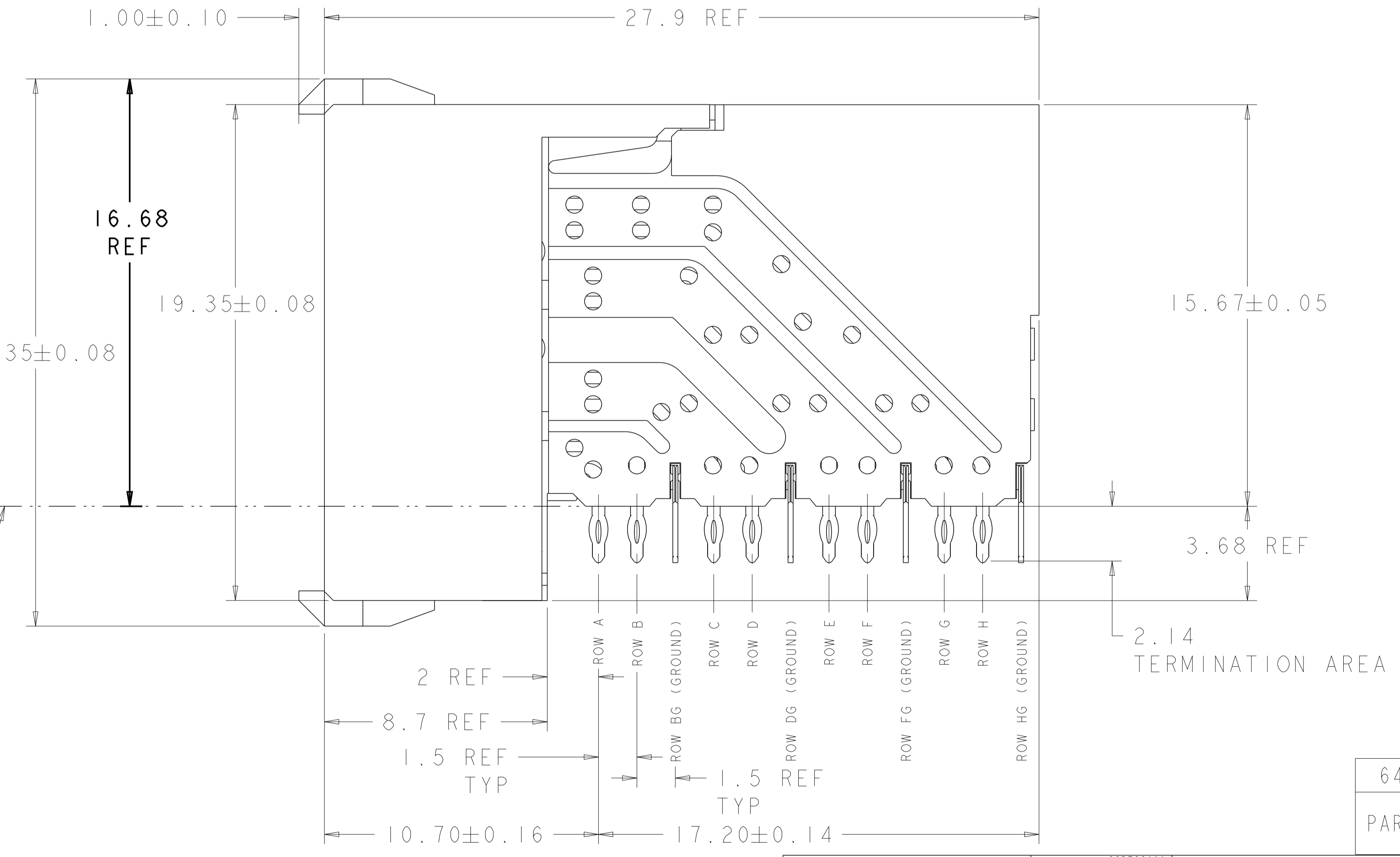


RECOMMENDED PC BOARD LAYOUT, DAUGHTER BOARD, COMPONENT SIDE SHOWN
 SCALE 4:1

- 1 PCB HOLE DIM:
 DRILLED HOLE = $0.700 \pm 0.025 \text{ mm}$
 FINISHED HOLE = $0.600 \pm 0.050 \text{ mm}$
 Cu THICKNESS = $0.0375 \pm 0.0125 \text{ mm}$
 SnPb THICKNESS = $0.007 \pm 0.003 \text{ mm}$
- 2 MATERIAL:
 SHIELD - PHOSPHOR BRONZE
 CONTACT - COPPER-NICKEL-SILICON
 HOUSING, CHICKLET AND CHICKLET COVER - GLASS FILLED POLYESTER
- 3 FINISH: CONTACT AND SHIELD
 MATING AREA - MEETS THE PERFORMANCE REQUIREMENTS OF PRODCUT SPECIFICATION 108-2055; BASED ON TELCORDIA GR-1217-CORE, APPLICATIONS IN UNCONTROLLED ENVIRONMENTS
 COMPLIANT PIN AREA - $0.5 \mu\text{m}$ MIN TIN OVER $1.27 \mu\text{m}$ MIN NICKEL
- 4 CONNECTOR MARKED WITH DATE CODE IN APPROXIMATE AREA SHOWN
- 5 DIMENSION APPLIES TO CENTERLINE OF THRU HOLE.
- 6 DATUMS AND BASIC DIMENSIONS ESTABLISHED BY CUSTOMER.
- 7. CONTACT AREA LUBRICATED WITH BELLCORE APPROVED LUBRICANT. TECHNICAL REFERENCE: GR-1217-CORE, ISSUE 1, NOVEMBER 1995.



TOP SURFACE OF DAUGHTER CARD



6469251-1
 PART NUMBER

THIS DRAWING IS A CONTROLLED DOCUMENT.		OWN D. HUMBERT 28DEC2009	TE Connectivity	
DIMENSIONS:		CHK J. EARY 28DEC2009	NAME RECEPTACLE ASSEMBLY, 4 PAIR, 12.5mm HMZd	
TOLERANCES UNLESS OTHERWISE SPECIFIED:		APVD J. EARY 28DEC2009	PRODUCT SPEC	
mm		APPLICATION SPEC	SIZE CAGE CODE DRAWING NO RESTRICTED TO	
0 PLC ±		WEIGHT	A100779C=6469251	
1 PLC ±		CUSTOMER DRAWING	SCALE 8:1 SHEET 1 OF 1 REV E	
2 PLC ±				
3 PLC ±				
4 PLC ±				
ANGLES ±				
FINISH				