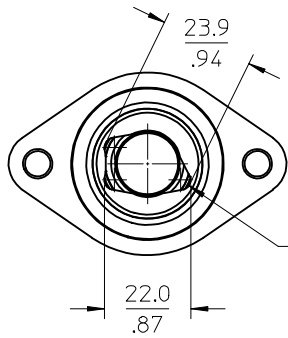
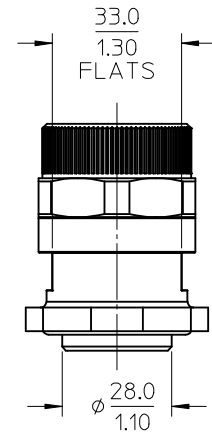
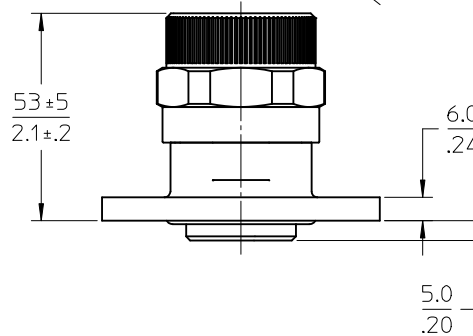
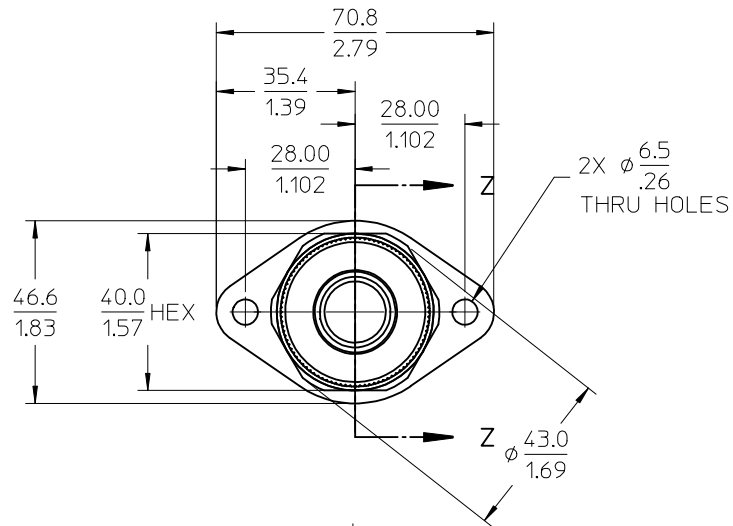


10	9	8	7	6	5	4	3	2	1
SINGLE ASSEMBLY PART NO.	KIT ASSEMBLY PART NO.	WIRE AWG	GROMMET	COLOR	O-RING	COLOR	CABLE SEALING RANGE		
1301990080	1301990180	3/0	HNBR	BLACK	HNBR	BLACK	17.45/.684 - 19.05/.750		
1301990280	1301990380	3/0	SILICONE	RUST RED	SILICONE	RUST RED	17.45/.684 - 19.05/.750		



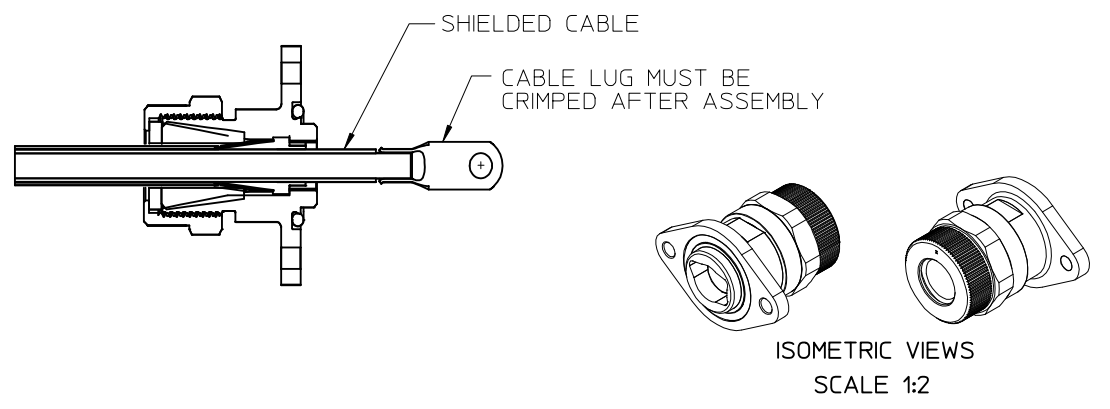
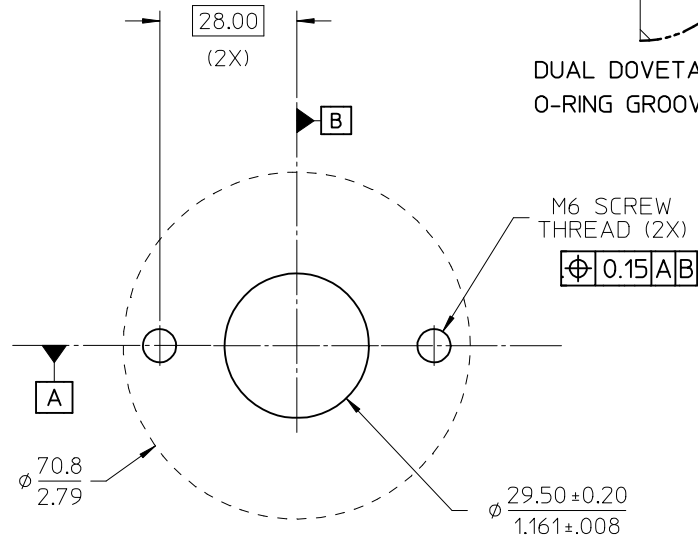
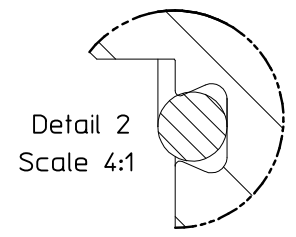
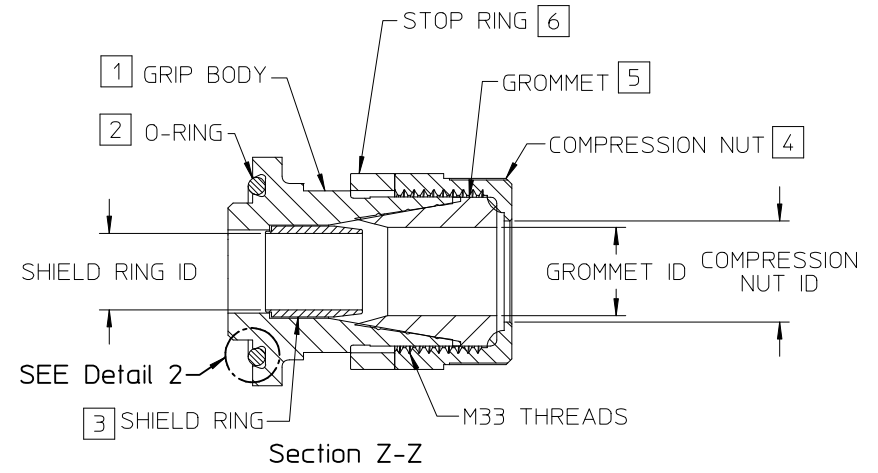
MOLEX 3/0 CABLE LUGS AND LARGER WILL NOT FIT THRU THE GRIP BODY



- NOTES:
- MATERIALS:
 - GRIP BODY: ALUMINUM ALLOY
 - FINISH: ELECTROLESS NICKEL PLATING
 - COMPRESSION NUT: ALUMINUM ALLOY
 - FINISH: ELECTROLESS NICKEL PLATING
 - SHIELD RING: ALUMINUM ALLOY
 - FINISH: ELECTROLESS NICKEL PLATING
 - STOP RING: ALUMINUM ALLOY
 - FINISH: ELECTROLESS NICKEL PLATING
 - GROMMET: SEE CHART
 - HNBR HARDNESS: SHORE 70A DUROMETER
 - SILICONE HARDNESS: SHORE 70A DUROMETER
 - O-RING: SEE CHART
 - HNBR HARDNESS: SHORE 90A DUROMETER
 - SILICONE HARDNESS: SHORE 70A DUROMETER
 - PRODUCT SPECIFICATION: PS-130199-001
 - PACKAGING SPECIFICATION: PK-130199-001
 - ASSEMBLY SPECIFICATION: AS-130199-002
 - ALL MATERIALS ARE ROHS COMPLIANT.

UPDATE NOTES AND TOLS		QUALITY SYMBOLS	GENERAL TOLERANCES (UNLESS SPECIFIED)	DIMENSION STYLE	SCALE	DESIGN UNITS	THIRD ANGLE PROJECTION
EC NO: IPG2016-0883	DRM:WLEUNG 2015/12/29	▽=0	mm INCH	MM/IN	1:1.25	METRIC	THIRD ANGLE PROJECTION
CHKD:GSUDHINI 2015/12/29	APPR:APATEL 2016/03/10	▽=0	4 PLACES ± --- ± ---	DRAWN BY DATE	TITLE MAXLOC SHIELDED CORD GRIP ASSEMBLY 3/0 AWG molex		
		▽=0	3 PLACES ± --- ± .015	WLEUNG 2013/01/04			
		▽=0	2 PLACES ± 0.40 ± .03	CHECKED BY DATE			
		▽=0	1 PLACE ± 0.8 ± ---	DTITUS 2013/01/25			
			0 PLACE ± --- ± ---	APPROVED BY DATE	DOCUMENT NO. SD-130199-005		
			ANGULAR ± 3 °	DTITUS 2013/01/25	SHEET NO. 1 OF 2		
			DRAFT WHERE APPLICABLE MUST REMAIN WITHIN DIMENSIONS	MATERIAL NO. SEE CHART	THIS DRAWING CONTAINS INFORMATION THAT IS PROPRIETARY TO MOLEX INCORPORATED AND SHOULD NOT BE USED WITHOUT WRITTEN PERMISSION		
				SIZE B			

ITEM NO.	DESCRIPTION
1	GRIP BODY, M33 THREAD
2	O-RING, HNBR O-RING, SILICONE
3	SHIELD RING (3/0 AWG), 15.62MM/.615" ID
4	COMPRESSION NUT (3/0 AWG, 20.60MM/.810" ID)
5	GROMMET, HNBR (3/0 AWG), 18.04MM/.710" ID GROMMET, SILICONE (3/0 AWG), 18.04MM/.710" NOM. ID
6	STOP RING, 9.0MM/.36" THICK



SEAL SURFACE ZONE
WITHIN $\phi 70.8$ AREA:
SURFACE FINISH REQUIRED $3.2/\sqrt{\quad}$
FLATNESS REQUIRED 0.2

RECOMMENDED PANEL
MOUNT OPENING

UPDATE ID DIMS ADD O-RING GROOVE EC NO: IPG2016-0883 DR: WMLWUNG 2015/12/29 CHKD: GSUDHINI 2015/12/29 APPR: APATEL 2016/03/10	QUALITY SYMBOLS $\nabla = 0$ $\nabla = 0$ $\nabla = 0$	GENERAL TOLERANCES (UNLESS SPECIFIED) <table border="1"> <thead> <tr> <th></th> <th>mm</th> <th>INCH</th> </tr> </thead> <tbody> <tr> <td>4 PLACES</td> <td>\pm ---</td> <td>\pm ---</td> </tr> <tr> <td>3 PLACES</td> <td>\pm ---</td> <td>\pm .015</td> </tr> <tr> <td>2 PLACES</td> <td>\pm 0.40</td> <td>\pm .03</td> </tr> <tr> <td>1 PLACE</td> <td>\pm 0.8</td> <td>\pm ---</td> </tr> <tr> <td>0 PLACE</td> <td>\pm ---</td> <td>\pm ---</td> </tr> </tbody> </table>		mm	INCH	4 PLACES	\pm ---	\pm ---	3 PLACES	\pm ---	\pm .015	2 PLACES	\pm 0.40	\pm .03	1 PLACE	\pm 0.8	\pm ---	0 PLACE	\pm ---	\pm ---	DIMENSION STYLE MM/IN DRAWN BY: WLEUNG DATE: 2013/01/04 CHECKED BY: DTITUS DATE: 2013/01/25 APPROVED BY: DTITUS DATE: 2013/01/25	SCALE 1:1 DESIGN UNITS METRIC THIRD ANGLE PROJECTION	TITLE MAXLOC SHIELDED CORD GRIP ASSEMBLY 3/0 AWG molex
		mm	INCH																				
4 PLACES	\pm ---	\pm ---																					
3 PLACES	\pm ---	\pm .015																					
2 PLACES	\pm 0.40	\pm .03																					
1 PLACE	\pm 0.8	\pm ---																					
0 PLACE	\pm ---	\pm ---																					
DRAFT WHERE APPLICABLE MUST REMAIN WITHIN DIMENSIONS ANGULAR $\pm 3^\circ$	MATERIAL NO. SEE CHART	DOCUMENT NO. SD-130199-005	SHEET NO. 2 OF 2																				