



**ANATECH ELECTRONICS INC**  
RF & Microwave Filters & Products

## 3000 MHz Ceramic Bandpass Filter

**Part Number: AM3000B1056**



### Electrical specifications

**Center Frequency:** 3000 MHz  
**Bandwidth:** 35 MHz typ.  
**VSWR:** 1.5:1  
**Input / Output Impedance:** 50 Ohms  
**Passband:** 2982.5-3017.5 MHz  
**Passband Insertion Loss:** 3.0 dB max  
**Passband Ripple:** 1.0 dB max  
**Rejection:** 40 dB min at DC-2865 MHz  
**Rejection 2:** 30 dB min at 3135-6800 MHz  
**Power Handling:** 1 W

### Mechanical

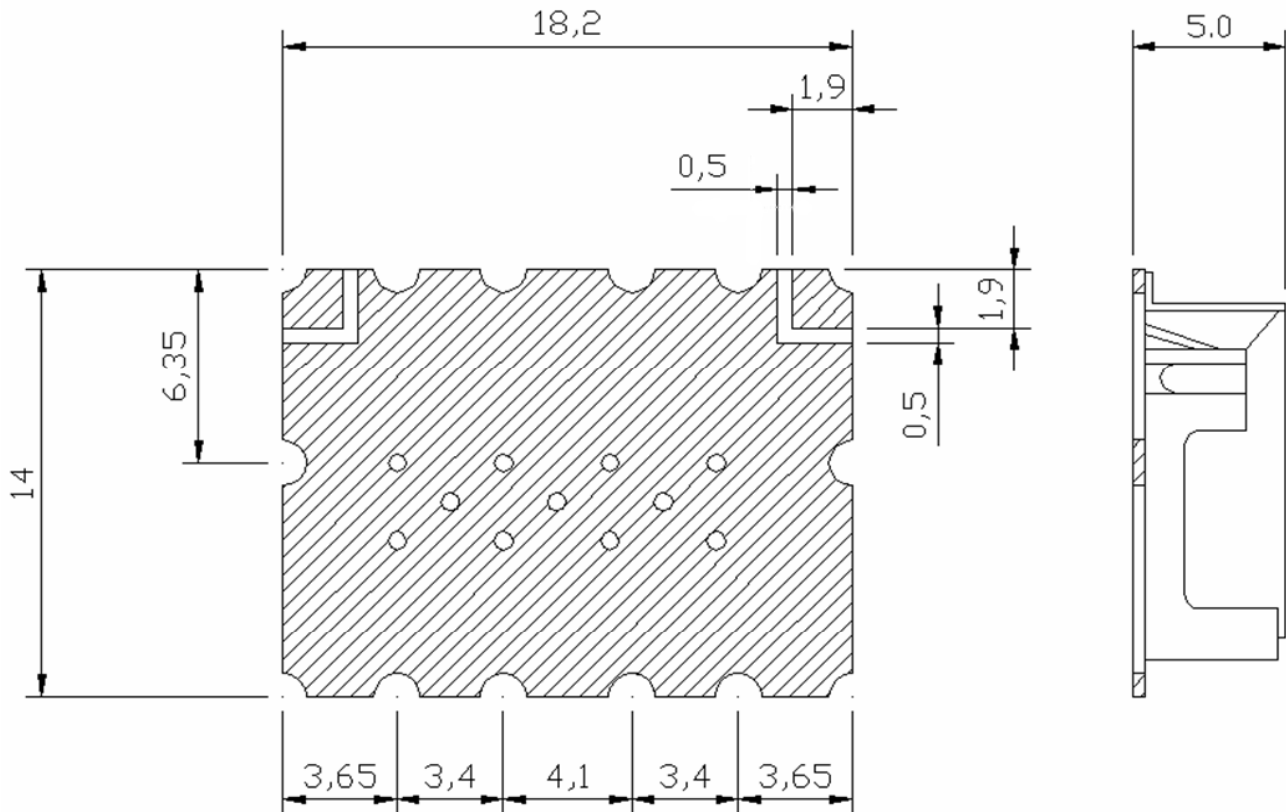
**Mounting Method:** SMT  
**Dimensions:** 18.2 x 14 x 5 mm

### Environmental

**Operating Temperature:** -20°C to 70°C  
**Storage Temperature:** -50°C to +90°C

This product is RoHS compliant.

### Outline Drawing:



Unit : mm  
Tolerance :  $\pm 0.3$