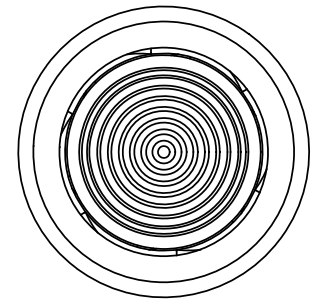
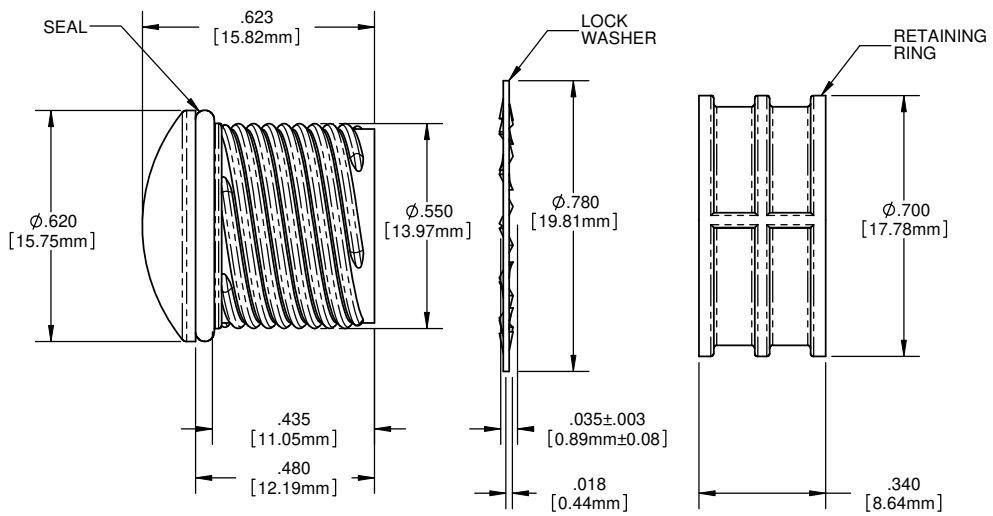
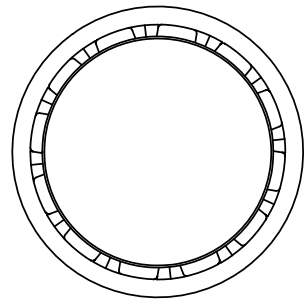
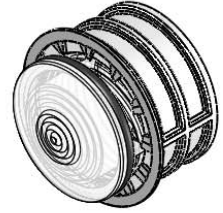


8 7 6 5 4 3 2 1

NOTES:

1. MOUNTING: Mounts in a  $\phi .562 \pm .002$  [ $\phi 16.56\text{mm} \pm .05$ ] panel hole on  $.750$  [ $19.05\text{mm}$ ] centers. Panel thickness  $.031$  [ $.8\text{mm}$ ] to  $.187$  [ $4.75\text{mm}$ ]. Panel hole should be deburred, but not chamfered.
2. ASSEMBLY: Insert lens through panel hole, slide lock washer onto lens barrel and twist on retaining ring. PCB mounted LEDs slide into lens when the panel cover is closed or the PCB card is inserted into the case.
3. MATERIAL: Lens-Polycarbonate, UL 94-V2  
Lock Washer- FH Steel, Nickel plate  
Retaining ring - Thermoplastic, U.L. 94 V0 Rated  
Seal- EPDM
4. U.S. & Foreign Pat. Issued & Pend.

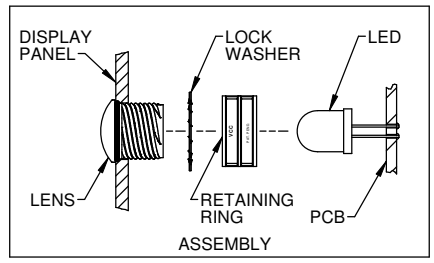
REVISIONS				
ECN#	REV.	DESCRIPTION	DATE	INITIALS
	001	REVISED PER EC R111009AZ01	4-23-10	SMU



ORDERING CODE : **HMS462 XXX**

MODEL

LENS COLOR	
RTP	RED TRANSPARENT
ATP	AMBER TRANSPARENT
GTP	GREEN TRANSPARENT
BTP	BLUE TRANSPARENT
YTP	YELLOW TRANSPARENT
CTP	CLEAR TRANSPARENT



DIMENSION STYLE: INCHES / MM  
GENERAL TOLERANCES UNLESS OTHERWISE SPECIFIED

XX	$\pm .020$	$\pm .508$
XXX	$\pm .010$	$\pm .254$
XXXX	$\pm .005$	$\pm .127$

ANGLE: 1°

THIRD ANGLE PROJECTION

THE INFORMATION CONTAINED IN THIS DRAWING IS THE PROPERTY OF VCC OPTOELECTRONICS COMPANY, INC. AND IS LOANED TO YOU FOR YOUR USE ONLY. IT IS NOT TO BE REPRODUCED OR TRANSMITTED IN ANY FORM OR BY ANY MEANS, ELECTRONIC OR MECHANICAL, INCLUDING PHOTOCOPYING, RECORDING, OR BY ANY INFORMATION STORAGE AND RETRIEVAL SYSTEM, WITHOUT THE WRITTEN PERMISSION OF VCC OPTOELECTRONICS COMPANY, INC.

MATERIAL	SEE NOTES
FINISH	SEE NOTES
APPROVAL	DATE
DRAWN: SMU	4-23-10
CHECKED: DZ	4-23-10
DO NOT SCALE DRAWING	

**VCC** OPTOELECTRONICS  
190 BOSSICK BLVD. SUITE 101 SAN MARCOS, CA 92069 U.S.A.  
PHONE: (760) 560-1300, FAX: (760) 560-1301 EMAIL: vccsales@vccsite.com

TITLE: 10MM ROUND STANDARD THREADED FRESNEL LENS WITH SEAL

SIZE	DWG. NO.	REV
<b>B</b>	<b>HMS 462 XXX</b>	<b>001</b>
SCALE: 4:1		SHEET 1 OF 1

8 7 6 5 4 3 2 1