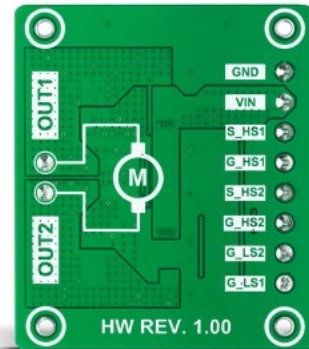
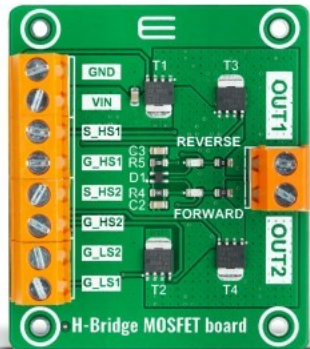


H-Bridge MOSFET board



PID: MIKROE-5053

H-Bridge MOSFET board represents a small-sized adapter board that allows you to connect all brushed DC motors (BDC) to a H-Bridge Driver Click board™. This board consists of five 5.08mm pitch screw terminals, with four of them on the left side suitable for a target H-Bridge Driver Click board™ connection with appropriate high and low side gate drive channels, and one on the right side for DC motor.

Mikroe produces entire development toolchains for all major microcontroller architectures.

Committed to excellency, we are dedicated to helping engineers bring the project development up to speed and achieve outstanding results.



ISO 27001: 2013 certification of informational security management system.
 ISO 14001: 2015 certification of environmental management system.
 OHSAS 18001: 2008 certification of occupational health and safety management system.



ISO 9001: 2015 certification of quality management system (QMS).

Resources

[mikroBUS™](#)

[mikroSDK](#)

[Click board™ Catalog](#)

[Click Boards™](#)

Downloads

[PSMN019-100YL datasheet](#)

[H-Bridge MOSFET board 2D and 3D files](#)

[H-Bridge MOSFET board schematic](#)

Mikroe produces entire development toolchains for all major microcontroller architectures.

Committed to excellency, we are dedicated to helping engineers bring the project development up to speed and achieve outstanding results.



ISO 27001: 2013 certification of informational security management system.
ISO 14001: 2015 certification of environmental management system.
OHSAS 18001: 2008 certification of occupational health and safety management system.



ISO 9001: 2015 certification of quality management system (QMS).