

## Features

- Low Ripple
- Low Loss
- Symmetrical Attenuation

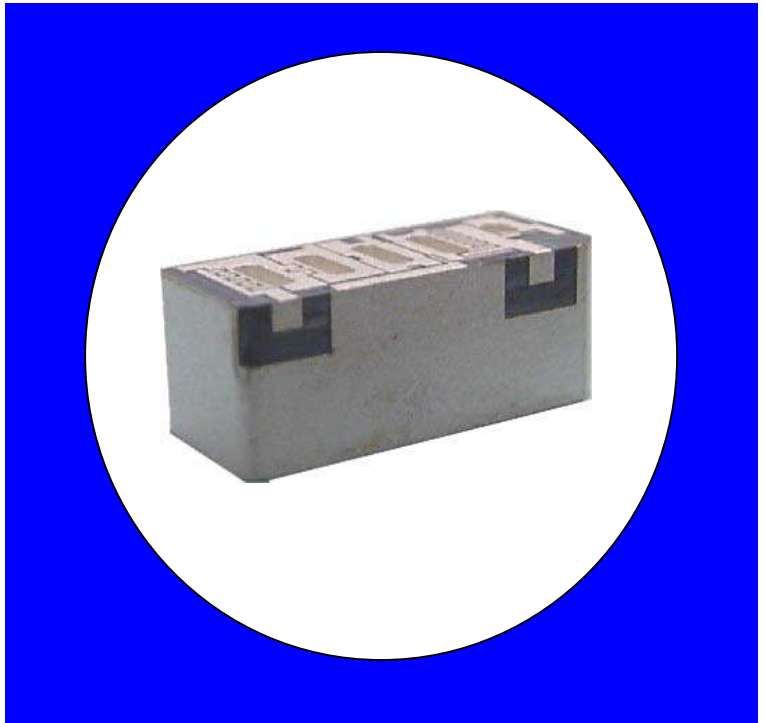
## Description

Surface mount, silver (Ag) coated ceramic filter. Developed for use in PCS infrastructure applications.

Weight: 2.0 grams typical

Material: Filter is composed of a ceramic block plated with Ag.

Filter complies with RoHS standards.



## Electrical Specifications

Parameter	Frequency (MHz)	Typical @ 25°C	Spec. @ 25°C	Spec. Over -30°C to +85°C
Passband Insertion Loss	1850-1910	2.7 dB	3.0 dB max	3.4 dB max
Passband Ripple	1850-1910	1.6dB	1.9 dB max	2.1 dB max
Passband Return Loss @ TX	1850-1910	10.0 dB	8.5 dB min	8.0dB min
Passband Return Loss @ ANT	1850-1910	10.0 dB	8.5 dB min	8.0dB min
Attenuation:	1920	15.0 dB	13.0 dB min	12.5 dB min
	1930-1990	21.0 dB	17.0 dB min	17.0 dB min
Power			2 Watts	

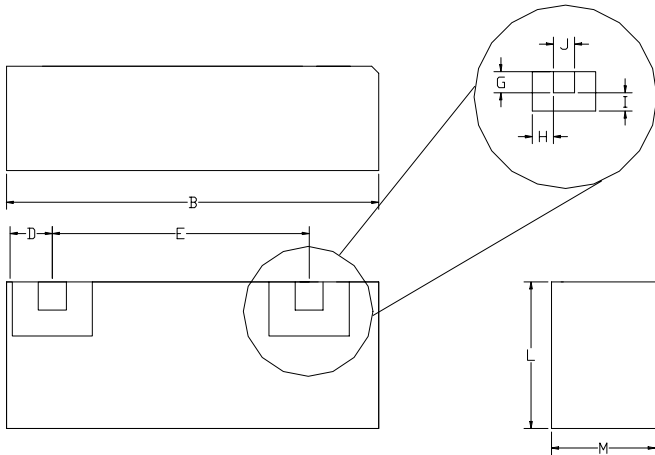
Note: Supplier shall test each filter to the critical electrical specifications of the above table. Any subsequent audits may deviate from in value due to measurement repeatability among different test systems. Such deviations shall not exceed the following limits:

Specification Allowance	
Insertion Loss	0.1 dB
Return Loss	1.0 dB
Stopbands	1.0 dB

\*This product is covered by one or more of the following U.S. and foreign patents including: US 4,692,726;US 4,742,562; US 4,800,348;US 4,829,274;US 5,146,193;EP 0573597;DE 0573597;FR 0573597;JP 508149/92;KR 142171;US 5,162,760;US 5,218,329;US 5,250,916;US 5,327,109;US 5,488,335;CA 2114029;FR 9306297;GB 2273393;JP 3205337;KR 115113;CN 93106228.4;US 5,512,866;EP 0706719;DE 0706719;FR 0706719;GB 0706719;CN 95190359.4;US 5,602,518;US 5,721,520;US 5,745,018;EP 0910875;DE 0910875;DK 0910875;FR 0910875;GB 0910875;IE 0910875;JP 505182/98;KR 10-323013;US 5,994,978;US 6,462,629;CN 00810420.4;US 6,559,735;US 6,650,202;US 6,834,429. Other US and foreign patents pending.

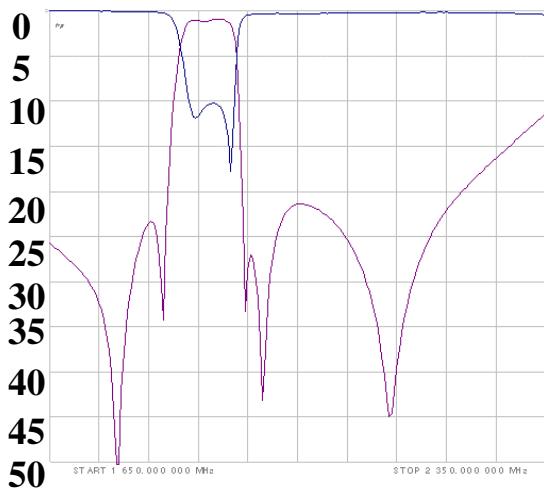
\*CTS Corporation 2006 reserves all copyrights in the layout, design and configuration of the patterns on this product.\*

## Mechanical Drawing

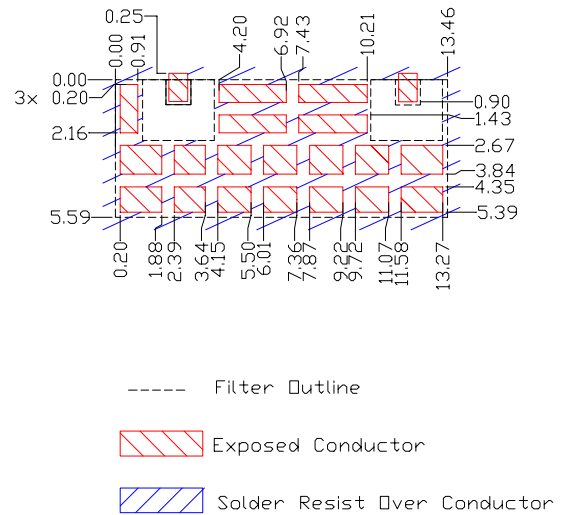


Dim	Nominal (mm)	Tolerance (mm) +/- or max
A		
B	13.67	max
C		
D	1.66	0.13
E	9.25	0.13
F		
G	1.02	0.13
H	0.94	0.13
I	0.94	0.13
J	1.02	0.13
K		
L	5.64	max
M	6.12	max

## Electrical response



## PCB Layout



## Packaging and Marking

DIMENSION	UNITS	SPECIFICATION
REEL DIAMETER	mm	330
REEL WEIGHT	kg	1.7
REEL QUANTITY	ea.	500

