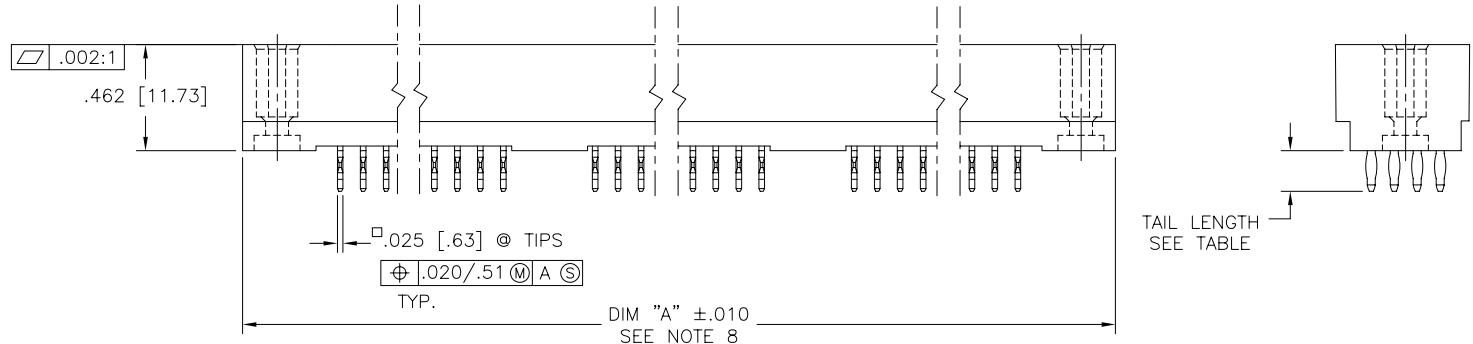
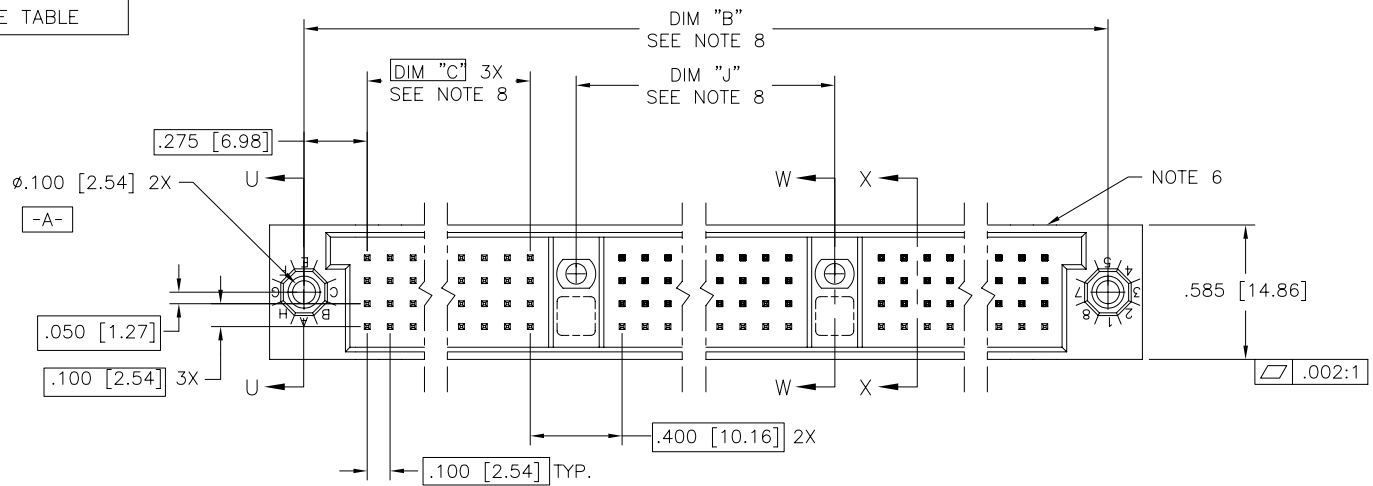


PRODUCT NUMBER
SEE TABLE



Copyright FCI

mat'l. code SEE NOTE 3		surface ISO 1302 ✓		tolerance ISO 406 ISO 1101		projection ⊕		product family HPC	
ltr		ecn no		dr		date		tolerances unless otherwise specified	
D	v40285	GIP	1/20/94	angles	linear	.xx±.01/.3		INCH/MM	
E	v40941	PDP	6/1/94			.xxx±.005/.13		scale 1:1	
F	v82253	HTB	12/29/98	0'±2'		.xxxx±.0020/.051		sheet 1 of 7 size	
G	v00271	JWS	1/31/00	dr	D.SHEAFFER	3/14/91		dwg no	
H	v05-0739	DAI	09/14/05	enr	S.CLARK	3/14/91		50011	
J	v05-1039	DAI	11/11/05	chr	S.CLARK	3/14/91		A3	
K	M06-0283	MHT	7/27/06	appd	S.CLARK	3/14/91		type Product Customer Drawing	
sheet	revision	K	K	K	K	K	K		
index	sheet	1	2	3	4	5	6	7	

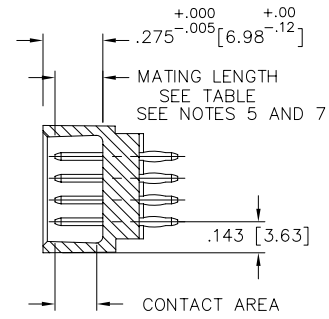
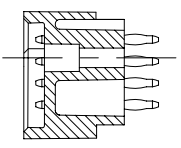
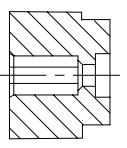
PRODUCT NUMBER
SEE TABLE

NOTES:

1. PRODUCT NUMBERING CODE:
 50011 - X YYY Z LF
 LEAD FREE (OPTIONAL)
 TAIL LENGTH (SEE TABLE)
 NO. OF POSITIONS (SEE NOTE 2)
 PLATING (SEE TABLE)
 BASE NUMBER

- PRODUCT NUMBERING CODE FOR
 SELECT LOAD PART NUMBERS:
 50011 - XXYYY LF
 LEAD FREE (OPTIONAL)
 SEQUENCE NUMBER
 ALWAYS 'XX'
 BASE NUMBER

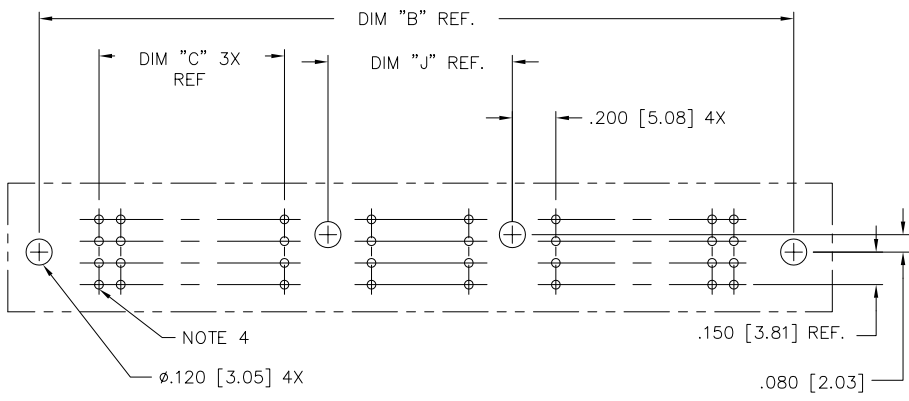
2. THIS PRODUCT IS CONFIGURED IN SIZES OF 30 thru 150 COLUMNS IN INCREMENTS OF THREE. i.e.: 30,33,36,39,.....147,150.
3. HOUSING MATERIAL: GLASS AND MINERAL FILLED HIGH TEMP. THERMOPLASTIC. FLAME RETARDANT PER UL94V-0. COLOR: BLACK. PIN MATERIAL: PHOS BRONZE
4. $\phi.0453/1.151$ DRILLED HOLE PLATED WITH $.0003/.007$ MIN. SnPb OVER $.001/.03$ TO $.003/.08$ Cu. PLATING TO ACHIEVE A $\phi.040 \pm .003/1.02 \pm .08$ HOLE.
5. TO ASSURE PROPER INSTALLATION: TOOLING, AS SPECIFIED IN INSTRUCTION MANUAL 155915-001 MUST BE USED. PIN MATING LENGTH WILL BE $\pm .002/.05$ AFTER INSTALLATION.
6. COMPANY NAME, PART NUMBER AND LOT CODE TO APPEAR ON THIS SURFACE PER BUS-12-108.
7. REFERENCE 50809 FOR F.M.L.B. AVAILABLE OPTIONS AND WORKSHEET.
8. LENGTH FORMULAS:
 DIM "A" = $.100/2.54 \times \text{NO. OF COLUMNS} + 1.35/34.3$
 DIM "B" = $.100/2.54 \times \text{NO. OF COLUMNS} + 1.050/26.67$
 DIM "C" = $.100/2.54 \times \text{NO. OF COLUMNS} \text{ DIVIDED BY } 3 - .100/2.54$
 DIM "J" = $.100/2.54 \times \text{NO. OF COLUMNS} \text{ DIVIDED BY } 3 + .300/7.62$
9. THIS PRODUCT (WITH "LF" SUFFIX) MEETS EUROPEAN UNION DIRECTIVES AND OTHER COUNTRY REGULATIONS AS DESCRIBED IN GS-22-008.
10. THIS HOUSING WILL WITHSTAND EXPOSURE TO 260° C PEAK TEMPERATURE FOR 10-30 SECONDS IN A CONVECTION, INFRA-RED OR VAPOR PHASE REFLOW OVEN.



SECTION U-U

SECTION W-W

SECTION X-X



RECOMMENDED PCB LAYOUT
 (ALL HOLES LOCATED ON $.100/2.54$ GRID UNLESS OTHERWISE SPECIFIED)

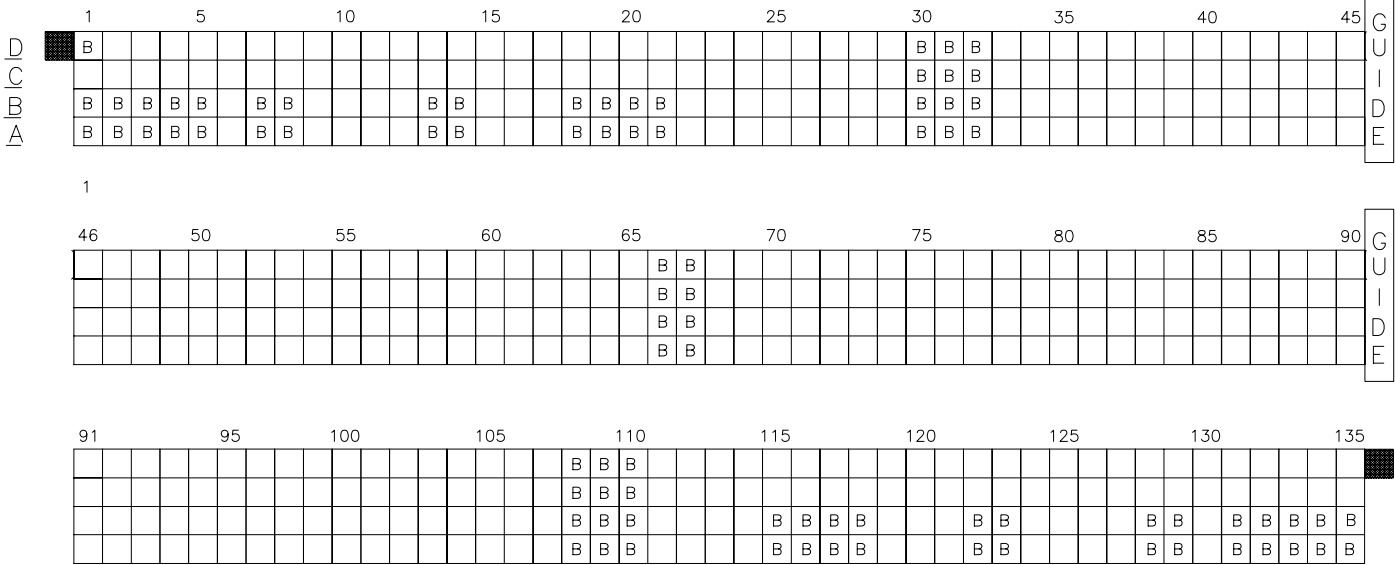
mat'l. code SEE NOTE 3		surface ISO 1302 <input checked="" type="checkbox"/>	tolerance ISO 406 ISO 1101	projection 	product family HPC
ltr	ecn	no	dr	date	tolerances unless otherwise specified
K					angles linear .xx±.01/.3
					0°±2' .xxx±.005/.13
					.xxxx±.0020/.051
			dr	D.SHEAFFER	3/14/91
			enr	S.CLARK	3/14/91
			chr	S.CLARK	3/14/91
			appd	S.CLARK	3/14/91
sheet	revision				
index	sheet				
				INCH/MM scale 1:1	
				title 4 ROW VERTICAL HEADER W/PRESS-FIT PINS, 2 G.P.	
				dwg no 50011	
				sheet 2 of 7 size A3	
				type Product Customer Drawing	



Copyright FCI

PRODUCT NUMBER
SEE TABLE

SELECT LOAD (50011-XX005 AND 50011-XX005LF ONLY)



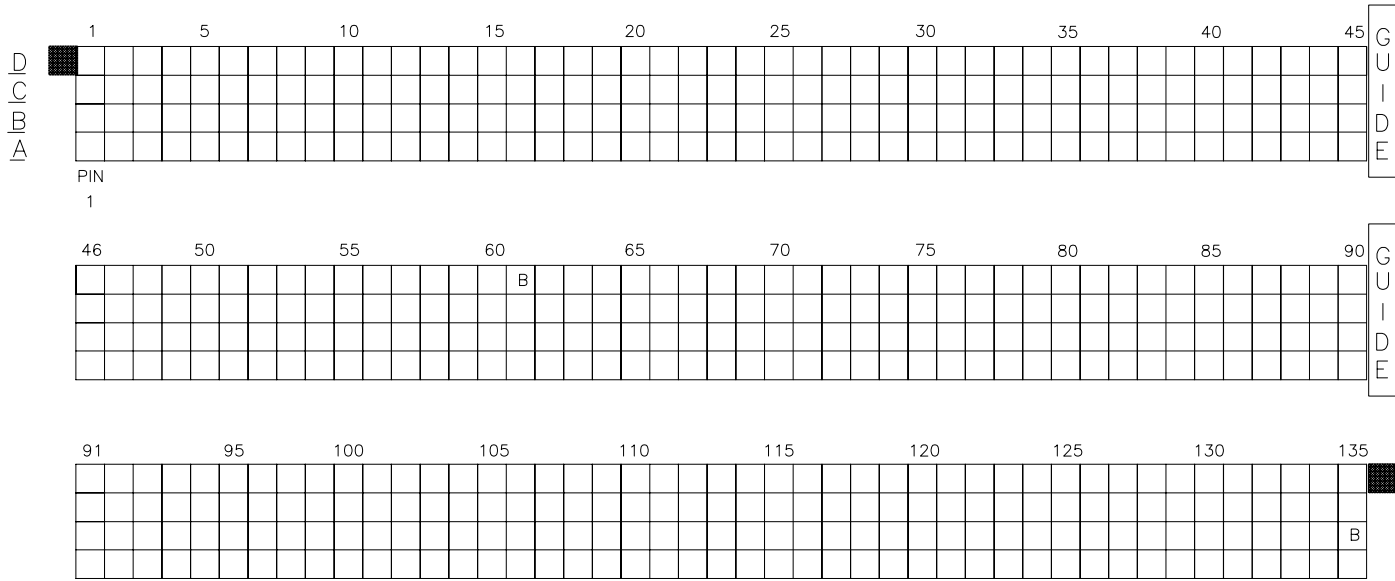
- SPECIAL NOTES FOR -XX005 AND -XX005LF ONLY:
- ALL POSITIONS ARE LOADED WITH "A", EXCEPT AS SHOWN.
 - COLUMN 1 ROW A IS DESIGNATED AS SIGNAL PIN 1, AS VIEWED FROM THE MATING FACE.
 - SIGNAL DATA FOR 50011-XX005 AND 50011-XX005LF:
 SIZE 4 X 135
 TOTAL NO. OF POSITIONS - 540
 NO. OF POSITIONS LOADED - 540

ITEM KEY	QTY.	MATING LENGTH	TAIL LENGTH
A	455	.200/5.59	.410/10.41
B	85	.260/6.60	.420/10.67

mat'l. code	surface		tolerance	projection	product family													
SEE NOTE 3	ISO 1302 ✓		ISO 406		HPC													
			ISO 1101		title													
ltr	ecn	no	dr	date		tolerances unless otherwise specified												
K						<table border="1"> <tr><td>angles</td><td>linear</td><td>.XX±.01/.3</td></tr> <tr><td></td><td></td><td>.XXX±.005/.13</td></tr> <tr><td></td><td></td><td>.XXXX±.0020/.051</td></tr> </table>	angles	linear	.XX±.01/.3			.XXX±.005/.13			.XXXX±.0020/.051	INCH/MM	4 ROW VERTICAL HEADER W/PRESS-FIT PINS, 2 G.P.	
angles	linear	.XX±.01/.3																
		.XXX±.005/.13																
		.XXXX±.0020/.051																
						scale 1:1	dwg no sheet 3 of 7 size											
			dr	D.SHEAFFER 3/14/91			50011 A3											
			enr	S.CLARK 3/14/91			type Product Customer Drawing											
			chr	S.CLARK 3/14/91														
			appd	S.CLARK 3/14/91														
sheet index	revision sheet																	

PRODUCT NUMBER
SEE TABLE

SELECT LOAD (50011-XX007 AND 50011-XX007LF ONLY)



- SPECIAL NOTES FOR -XX007 AND -XX007LF ONLY:
- ALL POSITIONS ARE LOADED WITH "A", EXCEPT AS SHOWN.
 - COLUMN 1 ROW A IS DESIGNATED AS SIGNAL PIN 1, AS VIEWED FROM THE MATING FACE.
 - SIGNAL DATA FOR 50011-XX007 AND 50011-XX007LF:
SIZE 4 X 135
TOTAL NO. OF POSITIONS - 540
NO. OF POSITIONS LOADED - 540

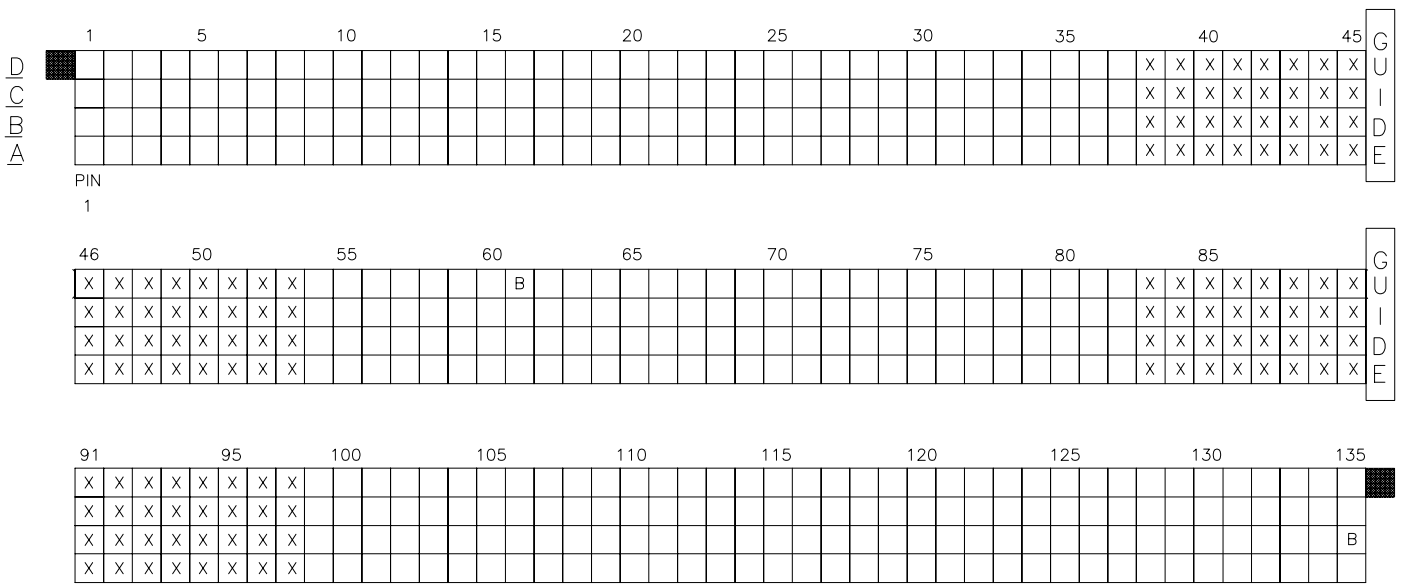
ITEM KEY	QTY.	MATING LENGTH	TAIL LENGTH
A	538	.200/5.08	.177/4.50
B	2	.240/6.10	.177/4.50

mat'l. code SEE NOTE 3		surface ISO 1302 ✓	tolerance ISO 406 ISO 1101	projection 	product family HPC
ltr	ecn	no	dr	date	tolerances unless otherwise specified
K					angles linear .XX±.01/.3 .XXX±.005/.13 .XXXX±.0020/.051
				0°±2'	INCH/MM
				scale 1:1	title 4 ROW VERTICAL HEADER W/PRESS-FIT PINS, 2 G.P.
		dr	D.SHEAFFER	3/14/91	dwg no
		enr	S.CLARK	3/14/91	sheet 4 of 7 size
		chr	S.CLARK	3/14/91	50011 A3
		appd	S.CLARK	3/14/91	type Product Customer Drawing
sheet index	revision sheet				

FCJ
FCIconnect.com
Copyright FCJ

PRODUCT NUMBER
SEE TABLE

SELECT LOAD (50011-XX008 AND 50011-XX008LF ONLY)



- SPECIAL NOTE FOR -XX008 AND -XX008LF ONLY:
- ALL POSITIONS ARE LOADED WITH "A", EXCEPT AS SHOWN.
 - COLUMN 1 ROW A IS DESIGNATED AS SIGNAL PIN 1, AS VIEWED FROM THE MATING FACE.
 - SIGNAL DATA FOR 50011-XX008 AND 50011-XX008LF:
 SIZE 4 X 135
 TOTAL NO. OF POSITIONS - 540
 NO. OF POSITIONS LOADED - 412

ITEM KEY	QTY.	MATING LENGTH	TAIL LENGTH
A	410	.200/5.08	.177/4.50
B	2	.240/6.10	.177/4.50
X	128	N/A	N/A

mat'l. code SEE NOTE 3		surface ISO 1302 ✓		tolerance ISO 406 ISO 1101		projection ⊕		product family HPC					
ltr		ecn		no		dr		date		tolerances unless otherwise specified		title	
K										angles		linear	
						0°±2'		.xx±.01/.3		.xxx±.005/.13		INCH/MM	
										.xxxx±.0020/.051		scale 1:1	
						dr		D.SHEAFFER		3/14/91		4 ROW VERTICAL HEADER	
						enr		S.CLARK		3/14/91		W/PRESS-FIT PINS, 2 G.P.	
						chr		S.CLARK		3/14/91		dwg no	
						appd		S.CLARK		3/14/91		sheet 5 of 7 size	
												50011 A3	
												type Product Customer Drawing	
sheet index		revision sheet											

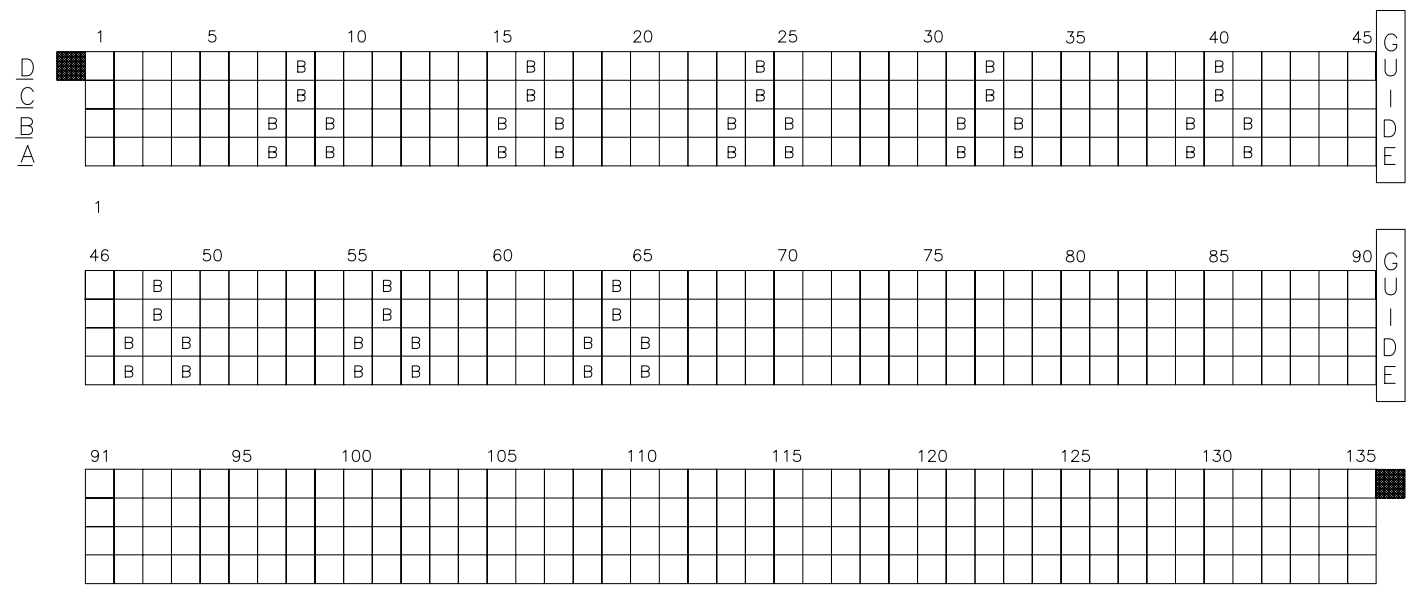


FCIconnect.com

Copyright FCI

PRODUCT NUMBER
SEE TABLE

SELECT LOAD (50011-XX011 AND 50011-XX011F ONLY)



- SPECIAL NOTES FOR -XX011 AND -XX011LF ONLY:
1. ALL POSITIONS ARE LOADED WITH "A", EXCEPT AS SHOWN.
 2. COLUMN 1 ROW A IS DESIGNATED AS SIGNAL PIN 1, AS VIEWED FROM THE MATING FACE.
 3. SIGNAL DATA FOR 50011-XX011 AND 50011-XX011LF:
 SIZE 4 X 135
 TOTAL NO. OF POSITIONS - 540
 NO. OF POSITIONS LOADED - 540

ITEM KEY	QTY.	MATING LENGTH	TAIL LENGTH
A	492	.200/5.08	.177/4.50
B	48	.220/5.58	.533/13.54

mat'l. code	surface	tolerance	projection	product family
SEE NOTE 3	ISO 1302 ✓	ISO 406 ISO 1101		HPC
ltr	ecn	no	dr	date
tolerances unless otherwise specified				title
K	angles	linear	INCH/MM	
	0°±2'	.XX±.01/.3 .XXX±.005/.13 .XXX±.0020/.051	4 ROW VERTICAL HEADER W/PRESS-FIT PINS, 2 G.P.	
dr	D.SHEAFFER	3/14/91	scale 1:1	
enr	S.CLARK	3/14/91	dwg no	
chr	S.CLARK	3/14/91	sheet 6 of 7 size	
appd	S.CLARK	3/14/91	50011 A3	
sheet index				type
				Product Customer Drawing

Copyright FCJ
 FCJconnect.com

PRODUCT NUMBER	NUMBER OF POSTIONS SEE NOTE 2	MATING LENGTH	TAIL LENGTH ±.015/0.38	TERMINAL PLATING
50011-1YYYA	YYY	.220[5.59]	.177/4.50	30μ"/76μ GOLD
50011-1YYYC	YYY		.533/13.54	30μ"/76μ GOLD
50011-1YYYD	YYY		.733/18.62	30μ"/76μ GOLD
50011-1YYYG	YYY		.250/6.35	30μ"/76μ GOLD
50011-1YYYL	YYY		.188/4.78	30μ"/76μ GOLD
50011-1YYYP	YYY		.470/11.94	30μ"/76μ GOLD
50011-3YYYA	YYY		.177/4.50	50μ"/1.27μ GOLD
50011-3YYYC	YYY		.533/13.54	50μ"/1.27μ GOLD
50011-3YYYD	YYY		.733/18.62	50μ"/1.27μ GOLD
50011-3YYYG	YYY		.250/6.35	50μ"/1.27μ GOLD
50011-3YYYL	YYY		.188/4.78	50μ"/1.27μ GOLD
50011-3YYYP	YYY		.470/11.94	50μ"/1.27μ GOLD
50011-5YYYA	YYY		.177/4.50	30μ"/76μ GXT
50011-5YYYALF	YYY		.177/4.50	30μ"/76μ GXT
50011-5YYYC	YYY		.533/13.54	30μ"/76μ GXT
50011-5YYYCLF	YYY		.533/13.54	30μ"/76μ GXT
50011-5YYYD	YYY		.733/18.62	30μ"/76μ GXT
50011-5YYYDLF	YYY		.733/18.62	30μ"/76μ GXT
50011-5YYYG	YYY		.250/6.35	30μ"/76μ GXT
50011-5YYYGLF	YYY		.250/6.35	30μ"/76μ GXT
50011-5YYYL	YYY		.188/4.78	30μ"/76μ GXT
50011-5YYYLLF	YYY		.188/4.78	30μ"/76μ GXT
50011-5YYYP	YYY		.470/11.94	30μ"/76μ GXT
50011-5YYYPLF	YYY	.220[5.59]	.470/11.94	30μ"/76μ GXT
50011-XX005	540	SEE SHEET 3	SEE SHEET 3	30μ"/76μ GXT
50011-XX005LF	540	SEE SHEET 3	SEE SHEET 3	30μ"/76μ GXT
50011-XX007	540	SEE SHEET 4	SEE SHEET 4	30μ"/76μ GXT
50011-XX007LF	540	SEE SHEET 4	SEE SHEET 4	30μ"/76μ GXT
50011-XX008	540	SEE SHEET 5	SEE SHEET 5	30μ"/76μ GXT
50011-XX008LF	540	SEE SHEET 5	SEE SHEET 5	30μ"/76μ GXT
50011-XX011	540	SEE SHEET 6	SEE SHEET 6	30μ"/76μ GXT
50011-XX011LF	540	SEE SHEET 6	SEE SHEET 6	30μ"/76μ GXT



FCJconnect.com

Copyright FCJ

mat'l. code SEE NOTE 3		surface ISO 1302 ✓	tolerance ISO 406 ISO 1101	projection 	product family HPC
ltr	ecn	no	dr	date	tolerances unless otherwise specified
K					angles linear .xx±.01/.3 .xxx±.005/.13 .xxxx±.0020/.051
					0'±2'
					dr D.SHEAFFER 3/14/91
					enr S.CLARK 3/14/91
					chr S.CLARK 3/14/91
					appd S.CLARK 3/14/91
sheet index	revision sheet				



title
4 ROW VERTICAL HEADER
W/PRESS-FIT PINS, 2 G.P.

scale 1:1

dwg no 50011 sheet 7 of 7 size A3

type Product Customer Drawing

form: A3