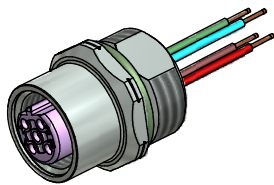


Contact assignment:

- 1) brown
- 2) Profibus-A green
- 3) blue
- 4) Profibus-B red

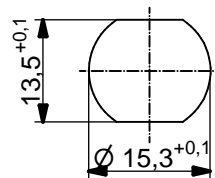


Technical specification:

Rated voltage:	250 V
IEC 61076-2-101	
Current rating:	4 A at 40°C
IEC 61076-2-101	
Insulation resistance:	>=100 MΩ
IEC 60512	
Pollution degree:	3/2
IEC 60664-1	
Degree of protection:	IP 67, in mated condition
IEC 60529	
Temperature range:	-30°C ... +80°C
Mating cycles:	>=100
IEC 60512-9a	
Materials:	
Contact:	CuZn
Contact plating:	Nickel, gold plated
Contact carrier:	PBT GF, UL 94
Sealing:	FPM
Socket housing:	CuZn, nickel plated
Grouting:	Polyurethane-resin, UL 94

Installation specification:

recommended torque:	1-1,2 Nm
Conec installation tool:	Torque wrench: 36-000200 Insert across flats 17: 36-000230



Minimum wall thickness 1,5mm,
alternativ panel cut-out d=15,3

Part no:	Description:	Pos	Length L:	Wire:
43-01109	SAL - 12B - FK4.3 - 0,5 - 9	4	0,5m	AWG 22 PVC, UL
43-xxxxx	SAL - 12B - FK4.3 - ... - 9	4	x	

DO NOT ALTER CAD DRAWING BY HAND Directive 2002/95/EC RoHS compliant	Index: c 12.02.13 MG Ä4631 Data sheet revised, technical specification changed, materials corrected	dim. in mm		title: Female socket M12x1 with wire, frontmounting, Profibus DP, PG9	
	tolerance of wire: L <= 0,5m: L + 20mm L > 0,5m: L + 4%	drawn	date		name
	general tolerance: 0 ± 0,50mm 0,0 ± 0,25mm 0,00 ± 0,10mm	appd.	06.03.07	Mankopf	dwg no:
	THIS DRAWING MAY NOT BE COPIED OR REPRODUCED IN ANY WAY, AND MAY NOT BE PASSED ON TO A THIRD PARTY WITHOUT WRITTEN PERMISSION. OWNERSHIP AND COPYRIGHT OF CONEC GmbH	CONEC ®			43K1A353
				part no: see table	