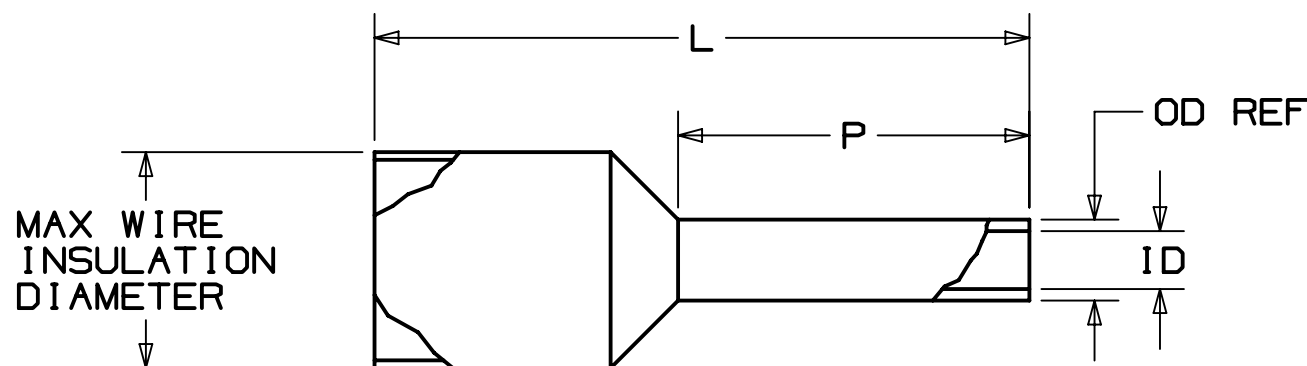


PANDUIT PART #	WIRE RANGE		COLOR (DIN)	WIRE STRIP LENGTH +1/32 -0 [+0,8 -0]	WIRE CLASS	DIMENSIONS in. [mm]				MAX WIRE INSUL DIA	INSTALLATION TOOLS/DIES	
	AWG	[mm <sup>2</sup> ]				L	P	ID	OD (REF.)		MANUAL	PNEUMATIC
* FSDX75-8	22-20	[0,50]	WHITE	15/32 [11,91]	B, K, M	0.53 [13,5]	0.31 [8,0]	0.04 [1,1]	0.05 [1,4]	0.12 [3,0]	CT-1002 CT-1003 CT-1090 ^CD-090 CT-1123 CT-1160 CT-1170 #CT-2523CH	CTFP-25 CTFP-40
FSDX76-8	18	[0,75]	GRAY	15/32 [11,9]	B, K, M	0.55 [14,0]	0.31 [8,0]	0.05 [1,3]	0.06 [1,6]	0.14 [3,4]		
FSDX77-8	-	[1,0]	RED	15/32 [11,9]	B, K, M	0.57 [14,5]	0.31 [8,0]	0.06 [1,5]	0.07 [1,8]	0.14 [3,4]		
FSDX78-8	16	[1,5]	BLACK	15/32 [11,9]	B, K, M	0.57 [14,5]	0.31 [8,0]	0.07 [1,8]	0.08 [2,1]	0.15 [3,8]		
FSDX78-10				17/32 [13,5]	B, K, M							
FSDX80-8	14	[2,5]	BLUE	15/32 [11,9]	B, K, M	0.63 [16,0]	0.31 [8,0]	0.09 [2,3]	0.10 [2,6]	0.19 [4,8]		
FSDX80-12				5/8 [15,9]	B, K, M							
FSDX81-10	12	[4,0]	GRAY	17/32 [13,5]	G, K, M	0.71 [18,0]	0.39 [10,0]	0.11 [2,9]	0.13 [3,3]	0.24 [6,2]		
FSDX81-12				5/8 [15,9]	G, K, M						0.79 [20,0]	0.47 [12,0]
FSDX84-12	6	[16,0]	BLUE	5/8 [15,9]	G, H, I, K, M	.91 [23,0]	0.47 [12,0]	0.24 [6,0]	0.25 [6,4]	0.37 [9,5]	+CT-1004 CT-1104 #CT-2504CH	---

\* UL LISTED WITH 20 AWG ONLY, UL486F SCOPE IS 20 - 1/0 AWG. WHITE IS DIN COLOR FOR 20 AWG [0,5]  
 + TOOL/PART IS NOT A UL LISTED COMBINATION  
 ^ DIES USED WITH CT-2300 TOOL  
 # CRIMP HEAD USED WITH CT-2500 TOOL

- NOTES:  
 1. USED FOR:  
 A. UL LISTED WITH STRANDED COPPER WIRE ONLY  
 B. 221°F [105°C] MAX. OPERATING TEMPERATURE  
 2. MATERIAL:  
 A. STAMPING: COPPER, TIN PLATED  
 B. HOUSING: POLYPROPYLENE, COLOR CODED  
 C. COLOR CODE CONFORMS TO DIN 46228 STANDARD  
 3. SEE [www.panduit.com](http://www.panduit.com) FOR PACKAGE QUANTITIES  
 4. DIMENSIONS IN BRACKETS ARE METRIC EQUIVALENT



10	4/15/20	BWG	HPR	JADE	△ ADDED DIN No. 46228 TO NOTE 2. C.	078556/00
09	8/18	FCHE	TMR	RGB	ADDED FSDX78-10, FSDX80-8, FSDX80-12, FSDX81-10, FSD81-12 & CTFP SERIES TOOLS	040535
08	3/17	TMR	RGB	RGB	ADDED TOOL INFORMATION RELATED TO CT-2500 TOOL	A41752
07	11/16	JHNU	JLOV	RGB	ADDED CT-1090, CT-2300, CT-1160, CT-1170	A41752
06	8/16	JHNU	JLOV	RGB	ADDED CT-2523CH, CT-2504CH	A41752
05	6/15	JHNU	JHNU	RGB	REVISED STRIP LENGTH FOR PSDX84-12: 5/8 WAS 7/8	A41752
04	6/15	TMR	RGB	VMB	UL LISTED, ADDED WIRE CLASS, MAX WIRE INSUL DIA TO DRWG	A41752
REV	DATE	BY	CHK	APR	DESCRIPTION	ECN

TITLE					
<b>FERRULES WITH SLEEVES SINGLE WIRE DIN END SLEEVES FSDX: LARGER SLEEVE DIAMETER CUSTOMER/AGENCY DRAWING</b>					
ITEM REVISION NAME			N41752BA/10		
DATASET FILE NAME			N41752BA_DC/10		
UNLESS OTHERWISE SPECIFIED, DIMENSIONAL TOLERANCES ARE: IN [mm]					MATERIAL:
.X ± .1 [2.54]					SEE NOTES
.XX ± .01 [.25]					ANGLES ± 5°
THIRD ANGLE PROJECTION					DRAWING NUMBER:
DRAWN BY: FCHE DATE: 8/31/2018 CHK: SCALE: N.T.S.					<b>A41752</b>
SHT 1 OF 1					<b>B</b>