

# Banana Plug - Insulated Side Set Screw Solderless



INCHES (MILLIMETERS)  
CUSTOMER DRAWINGS AVAILABLE UPON REQUEST

## SPECIFICATIONS

**Plug Body:** Brass per QQ-B-626D

**Plug Spring:** Nickel silver per QQ-C-585

**Finish:** Nickel

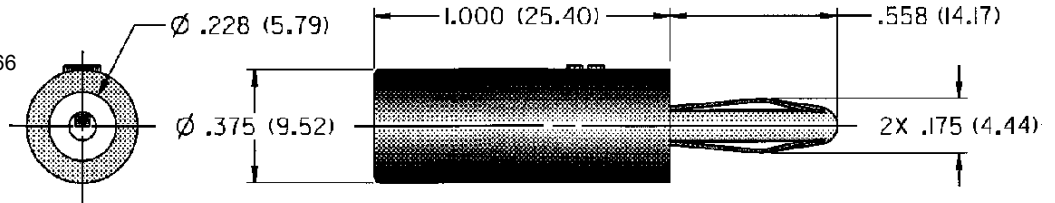
**Insulated Handle:** Nylon 6/6 per ASTM D4066

## RATINGS

**Current:** 15 amps

**Breakdown Voltage:** 35 Vrms minimum

**Contact Resistance:** 0.010 ohms maximum



### NICKEL PLATING

108-1702-101	Red
--------------	-----

**For Standard Banana Jack: .166 (4.23) Diameter**

**For Low Voltage (50 WVDC) Applications**

## FEATURES:

- Fast solderless connection of up to 16 gauge wire
- Set screw for dependable connections with low voltage
- Nylon UL approved for self extinguishing